

Figure S1. characterization of GQDs. (a) UV-Vis-NIR spectrum of GQDs. (b) Photothermal effect of GQDs solution (300 $\mu\text{g/mL}$) exposed to the NIR laser (808 nm, 1.44 W/cm^2). The lasers were shut off after 300 s irradiation. (c) Plot of cooling time versus negative natural logarithm of the temperature driving force obtained from the cooling period after the NIR irradiation (808 nm, 1.44 W/cm^2).

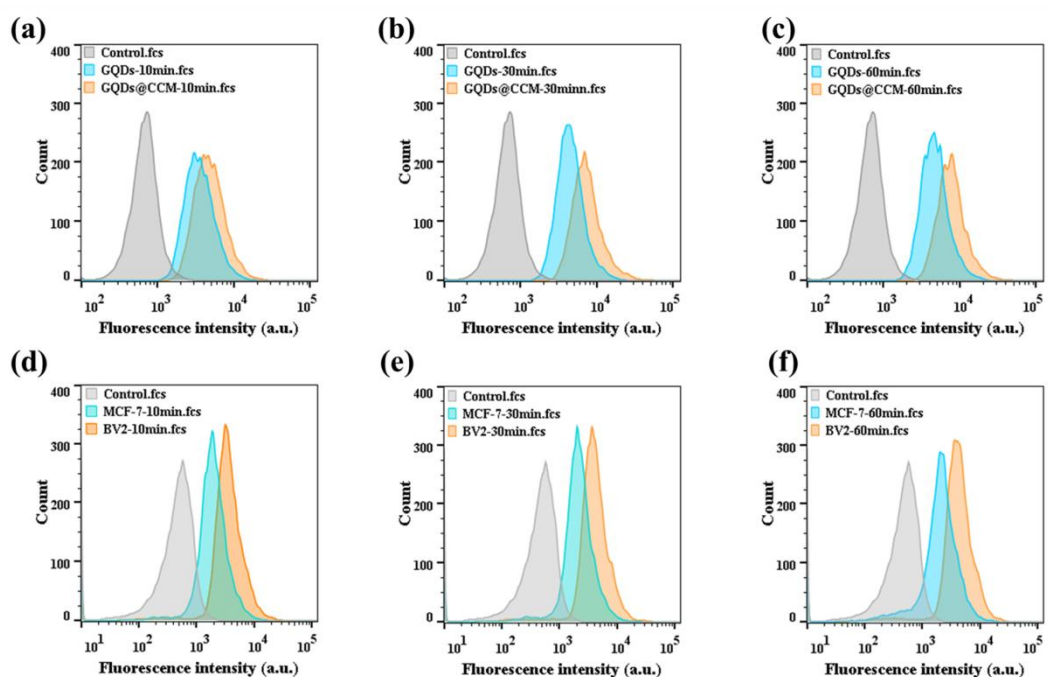


Figure S2. Flow cytometry analysis. (a, b and c) Mean fluorescence intensity of BV2 cells after 10, 30, and 60 min incubation with GQDs or GQDs@CCM, the final concentration of GQDs were 200 $\mu\text{g/mL}$. (d, e and f) Mean fluorescence intensity of MCF-7 and BV2 cells after 10, 30, and 60 min incubation with GQDs@CCM, the final concentration of GQDs were 200 $\mu\text{g/mL}$.

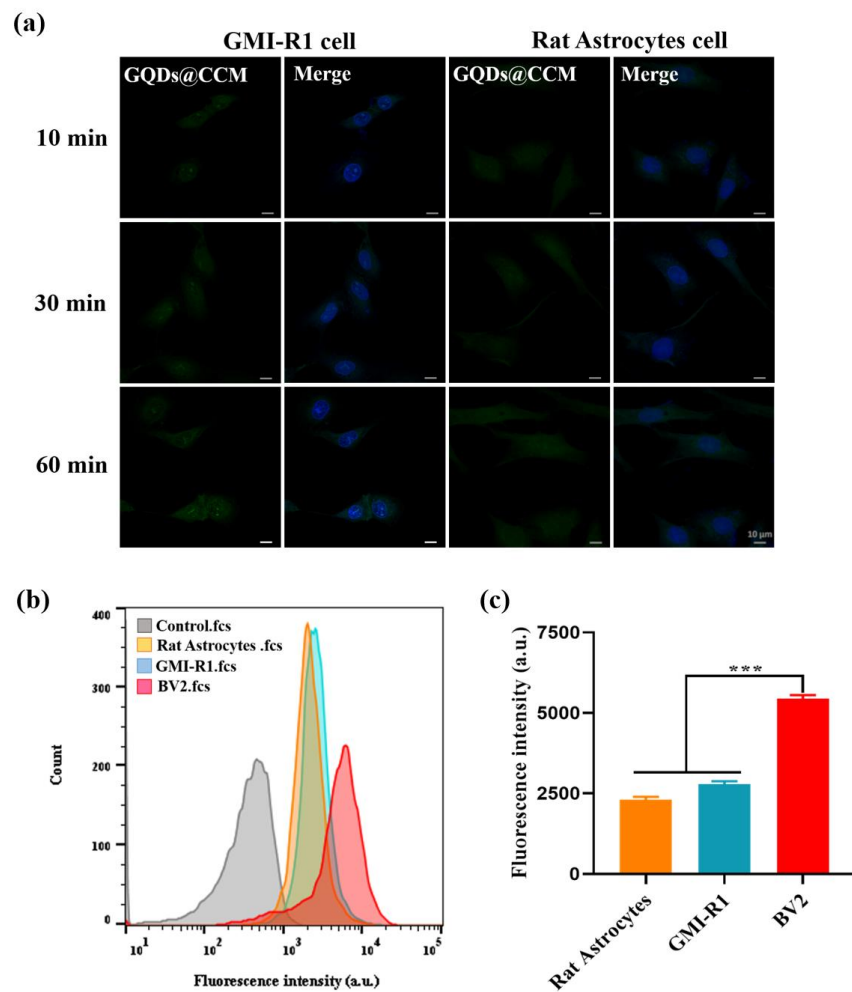


Figure S3. Homologous targeting of GQDs@CCM. (a) CLSM images of GMI-R1 and Rat astrocytes cells incubated with GQDs@CCM at GQDs concentration of 200 $\mu\text{g/mL}$ for different time period. Scale bar = 10 μm . (b,c) Quantitative analysis of cell uptake by FCM in different cell lines.