

Supporting Information:

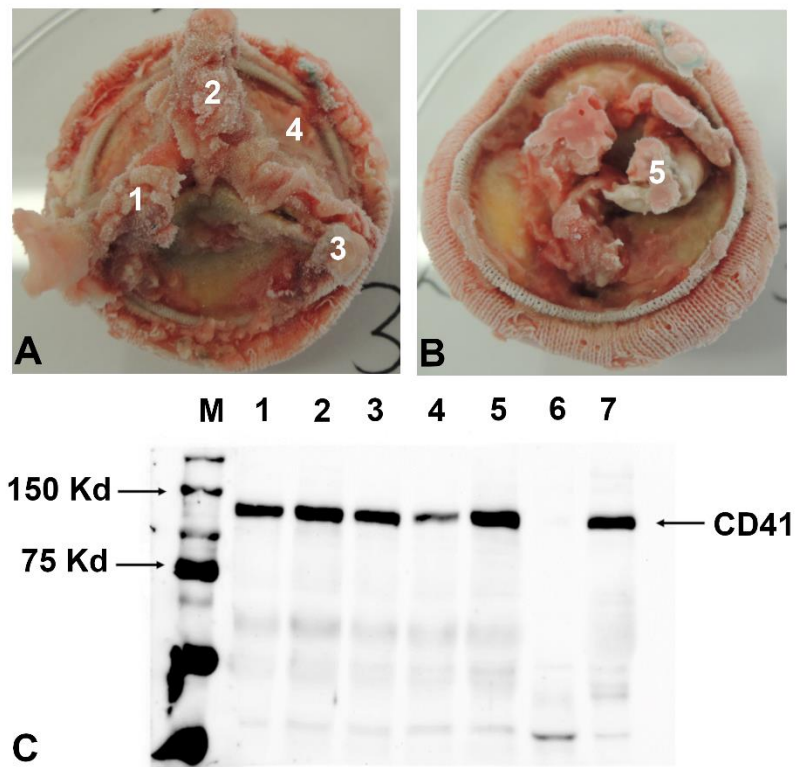


Figure S1. Western blot of endocarditic material on explanted bioprosthesis: (a) Bottom view of frozen explanted bioprosthesis, numbers 1-3 indicating the positions of material taken for western blot; (b) Top view of frozen explanted bioprosthesis, numbers 4-5 indicating the positions of material taken for western blot; (c) Western blot of endocarditic material (numbers 1-5) confirmed the presence of GPIIb/IIIa receptor, line 6: negative control, line 7: positive control with GPIIb/IIIa positive material.

Video S1: Rotating, 3-dimesional maximum intensity projection (MIP) PET image reconstruction of patient # 1.

Video S2: Rotating, 3-dimesional maximum intensity projection (MIP) PET image reconstruction of patient # 2.

Video S3: Rotating, 3-dimesional maximum intensity projection (MIP) PET image reconstruction of endocarditic bioprosthesis.

Video S4: Rotating, 3-dimesional maximum intensity projection (MIP) PET image reconstruction of unused bioprosthesis.