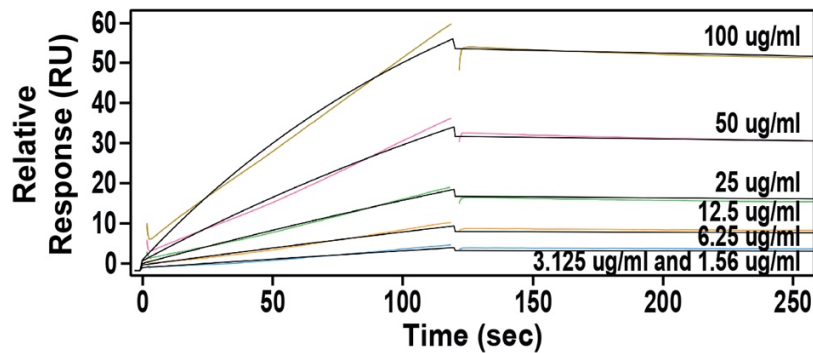
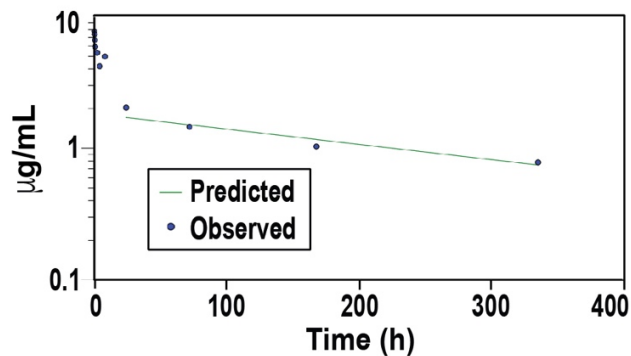


Supplemental Data:



Supplemental Figure S1. ALT-100 mAb Surface Plasmon Resonance (SPR). ALT-100 mAb binding affinity was assessed using SPR with immobilization of rhNAMPT (His Tag peptide, MBL International). As seen, the equilibrium dissociation constant (K_d) is $6.33\text{E-}09$ (M) with R_{max} (RU) 99.1%.



Supplemental Figure S2. ALT-100 mAb Pharmacokinetics. Shown are the average plasma concentration of ALT-100 mAb vs. time profiles in rats after a single IV dose at $100\text{ }\mu\text{g/kg}$. Green line represents the predicted elimination phase, which was used to determine half-lives. Circles represent the average plasma concentration from six rats at each time point. The $T_{1/2}$ of ALT-100 mAb is 355.2 hours (14.8 days).