

Reconstructed reflectivity spectra, together with original spectra for all parameter variations within the sensitivity analysis

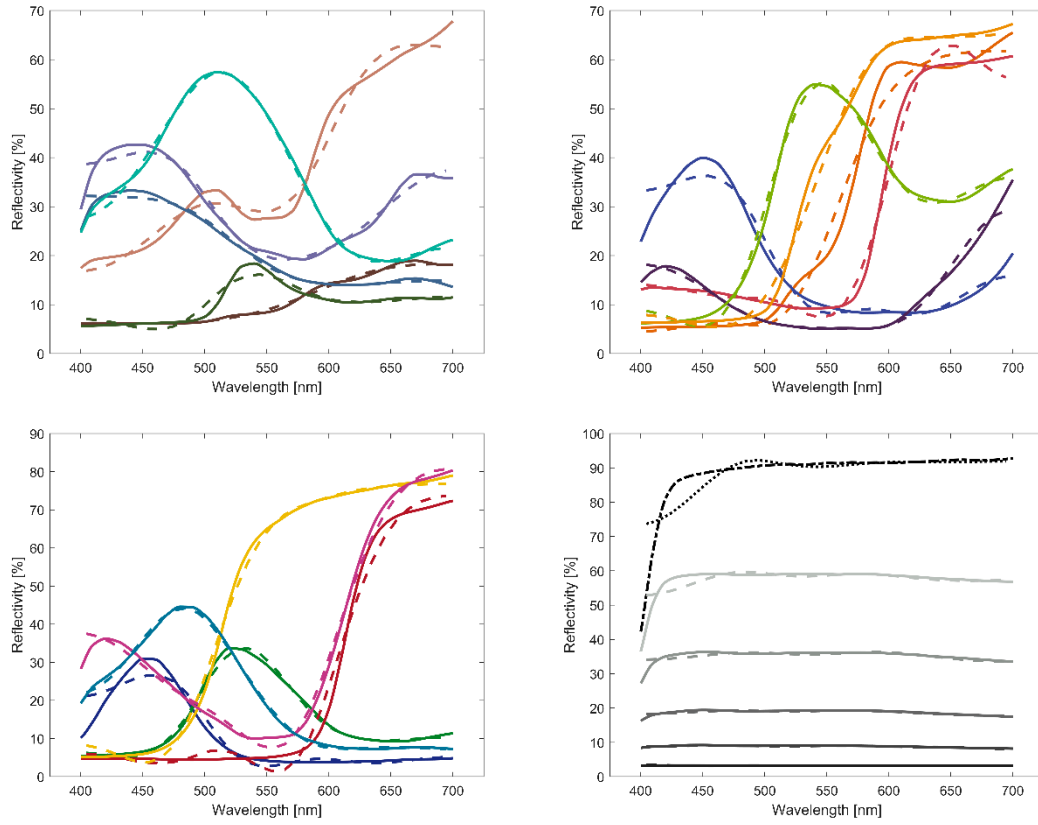


Figure 1: Reconstructed reflectivity spectra for  $SNR=1000$ .

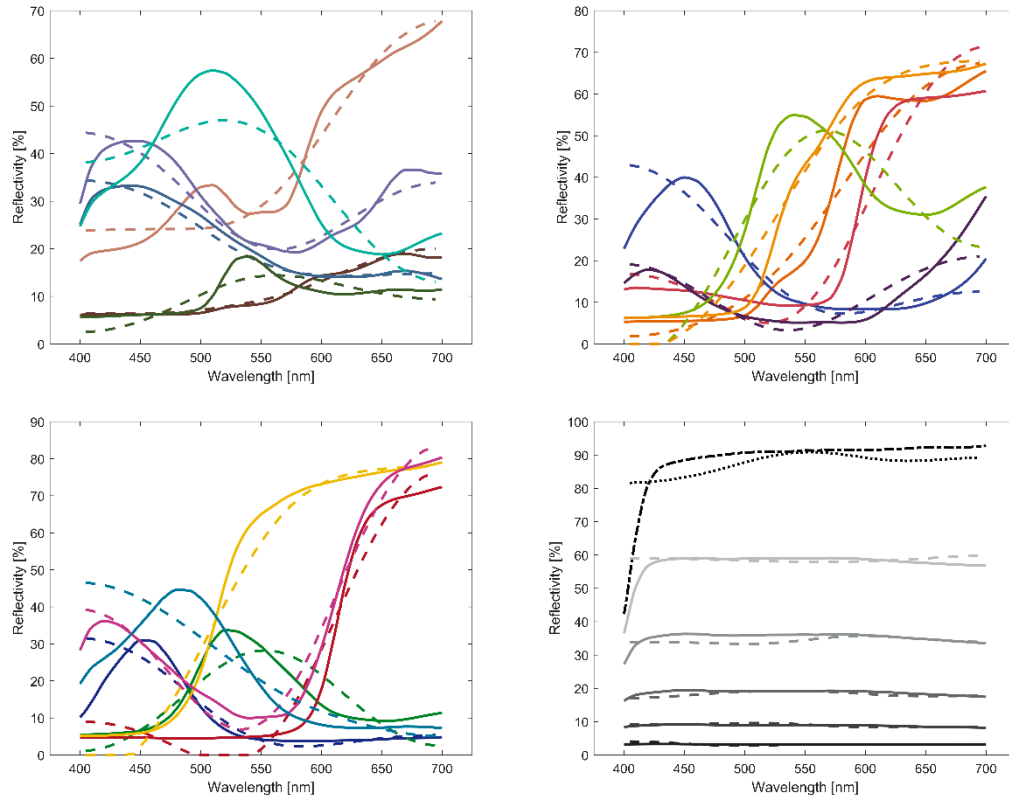


Figure 2: Reconstructed reflectivity spectra for  $SNR=10$ .

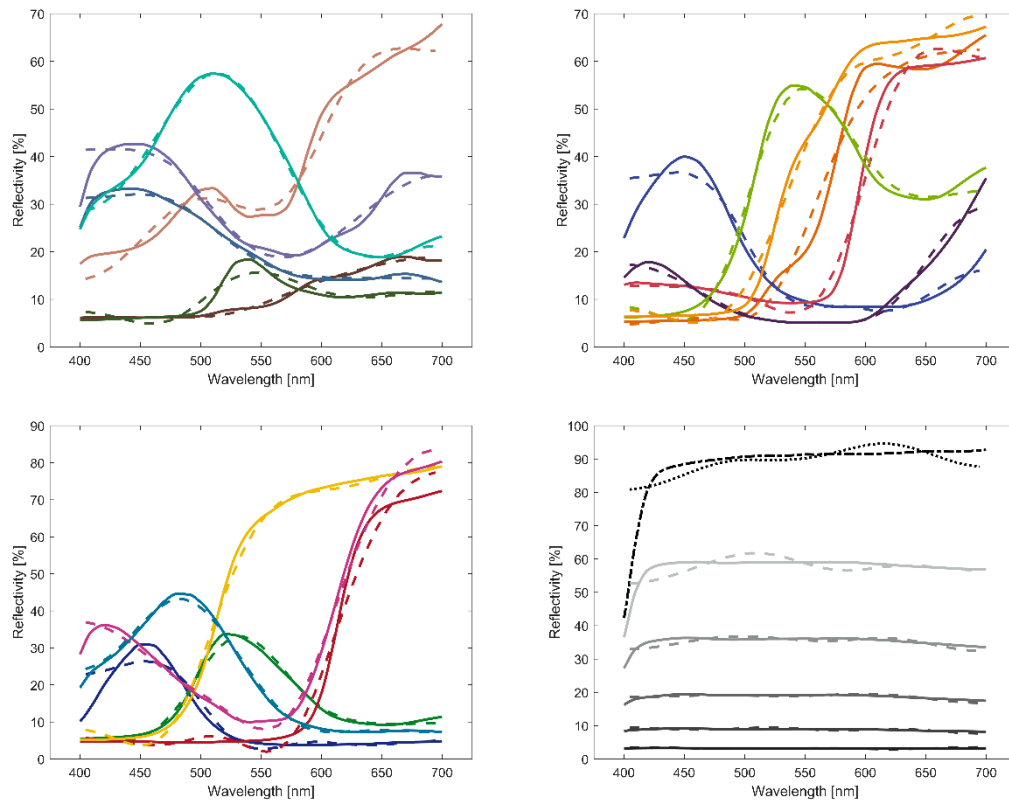


Figure 3: Reconstructed reflectivity spectra for  $\Delta T=10K$ .

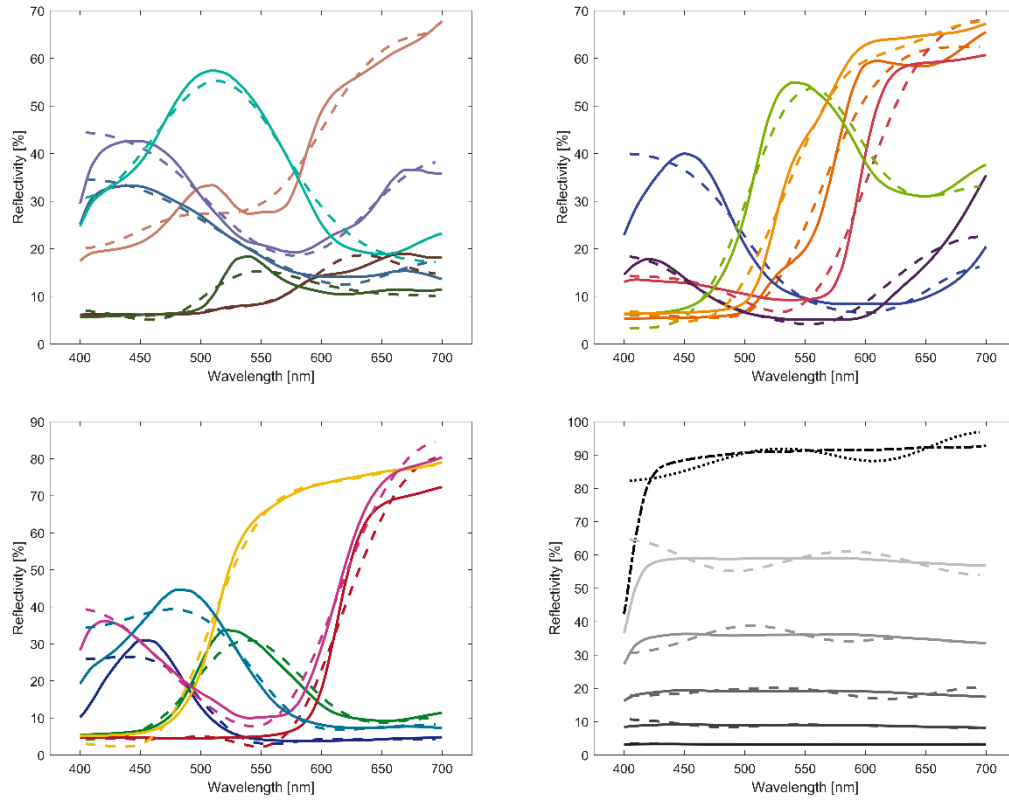


Figure 4: Reconstructed reflectivity spectra for  $\Delta T=100K$ .

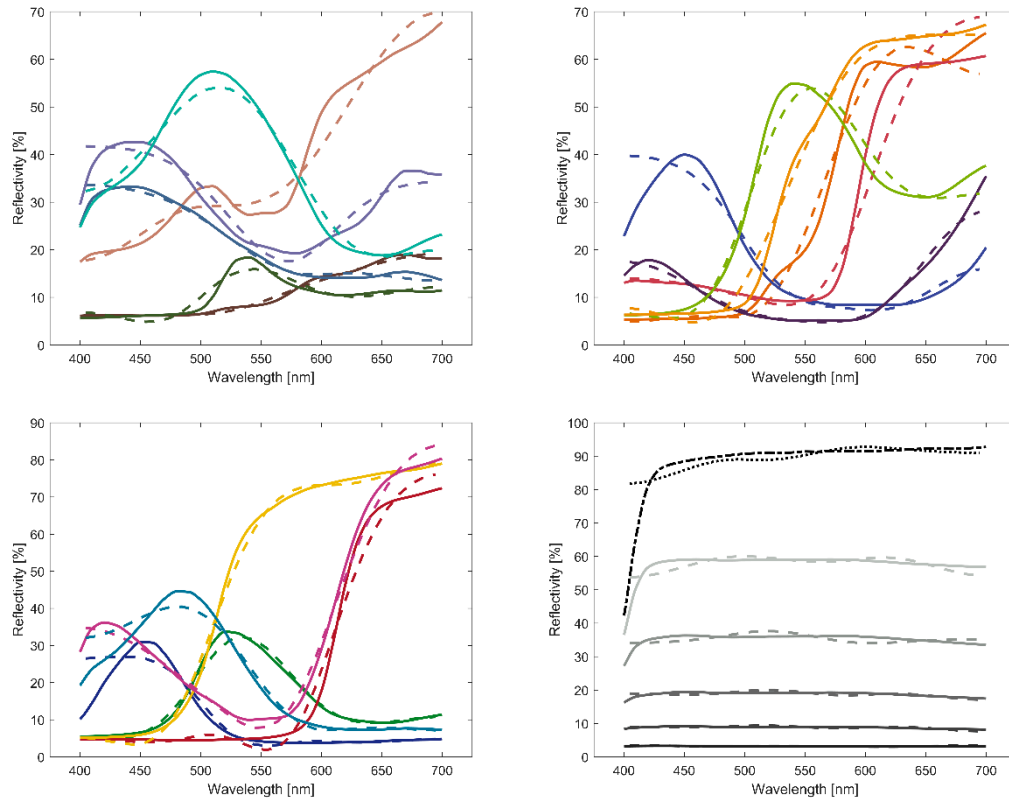


Figure 5: Reconstructed reflectivity spectra for  $T_{min}=1950K$ .

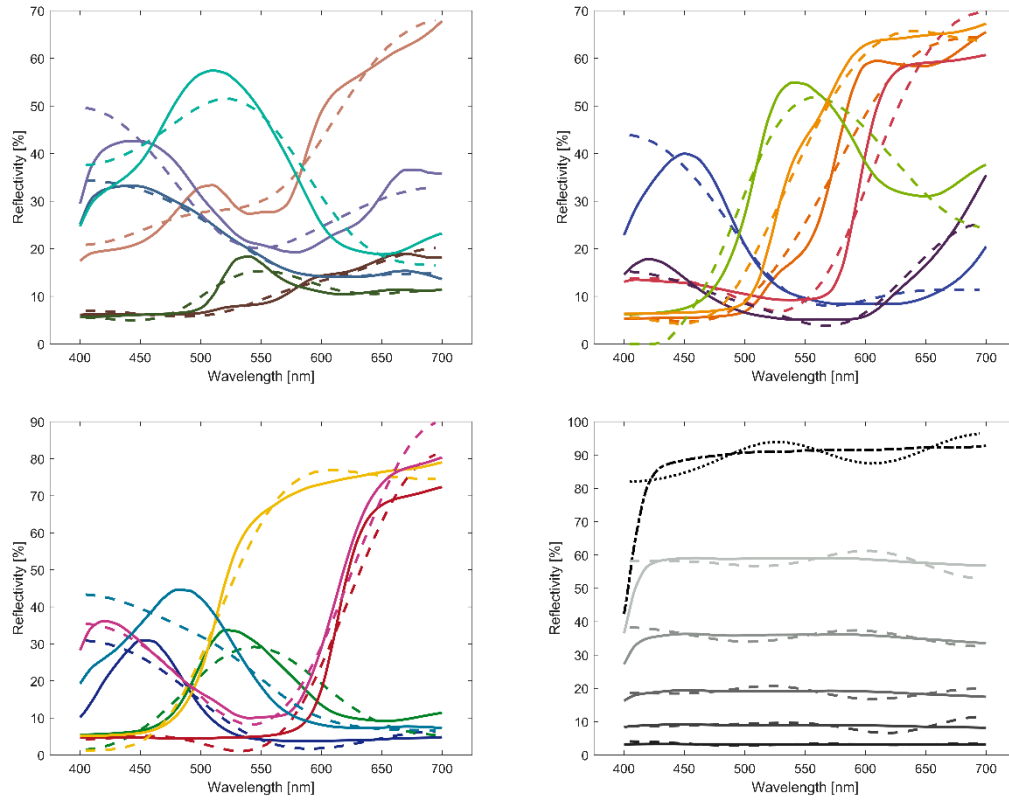


Figure 6: Reconstructed reflectivity spectra for  $T_{\max}=2950K$ .

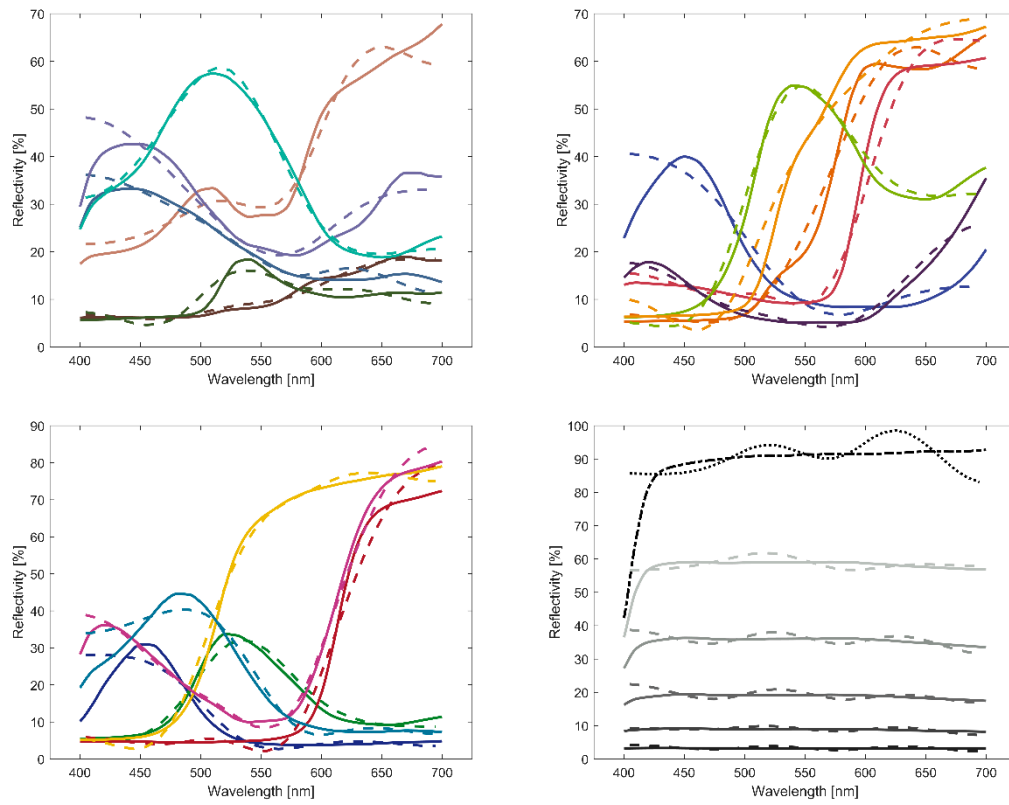


Figure 7: Reconstructed reflectivity spectra for  $\delta T=10K$ .

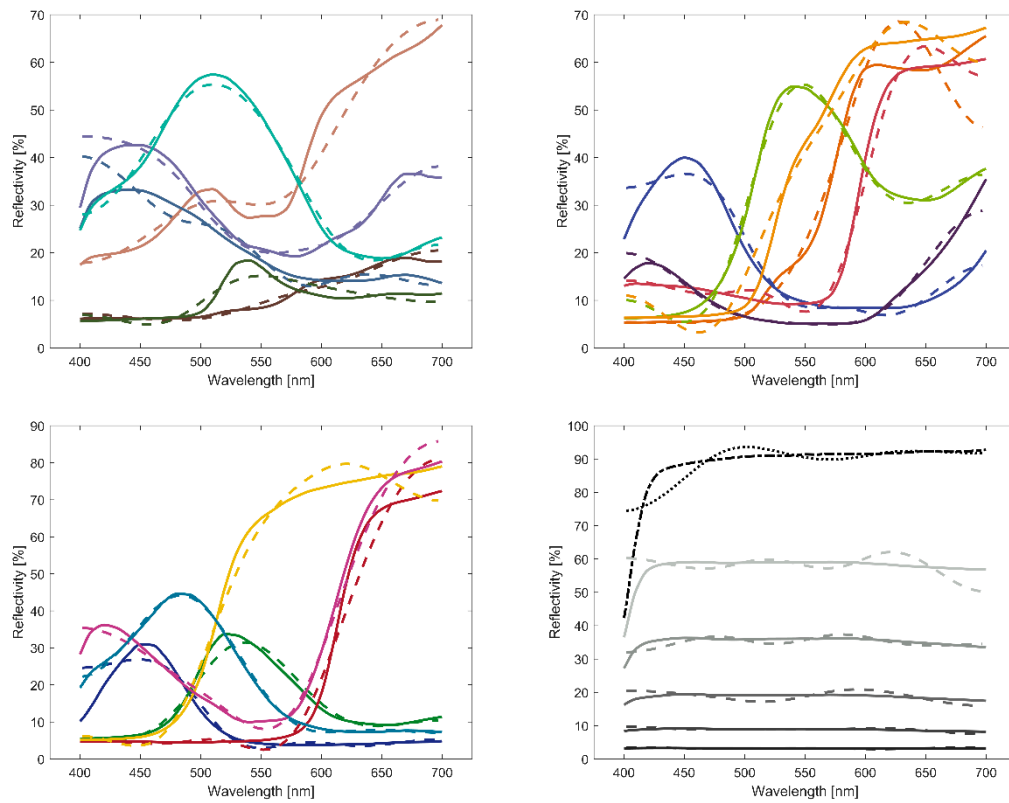


Figure 8: Reconstructed reflectivity spectra for  $\Delta\lambda=5\text{nm}$ .

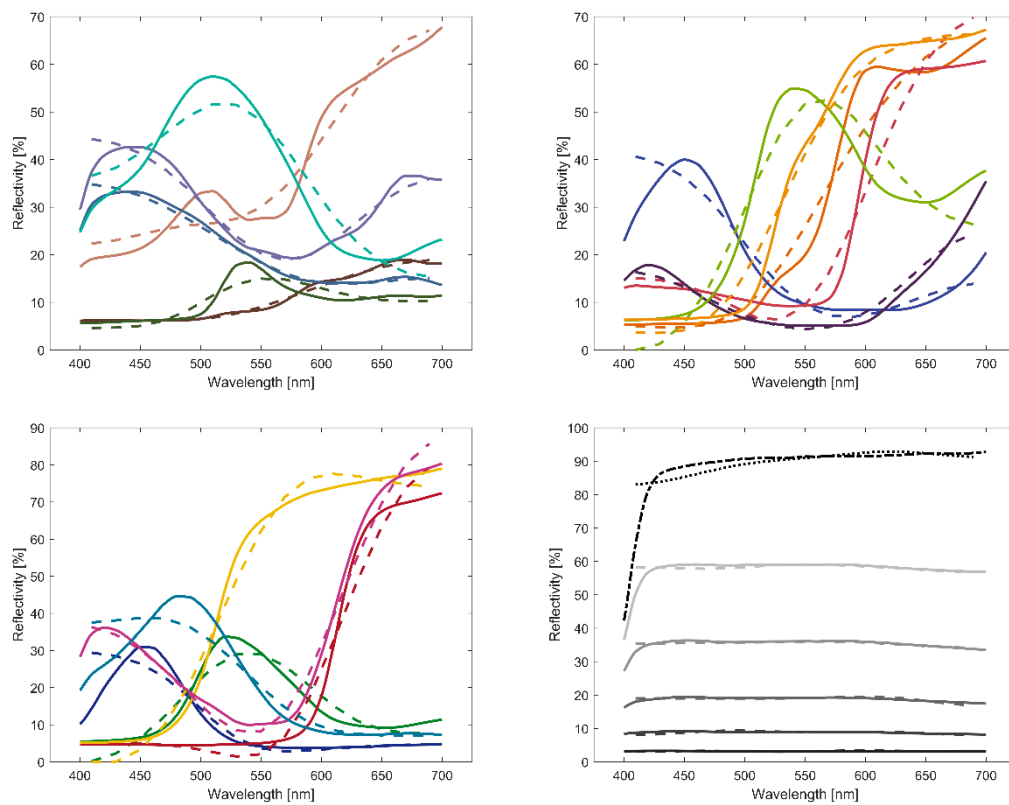


Figure 9: Reconstructed reflectivity spectra for  $\Delta\lambda=20\text{nm}$ .

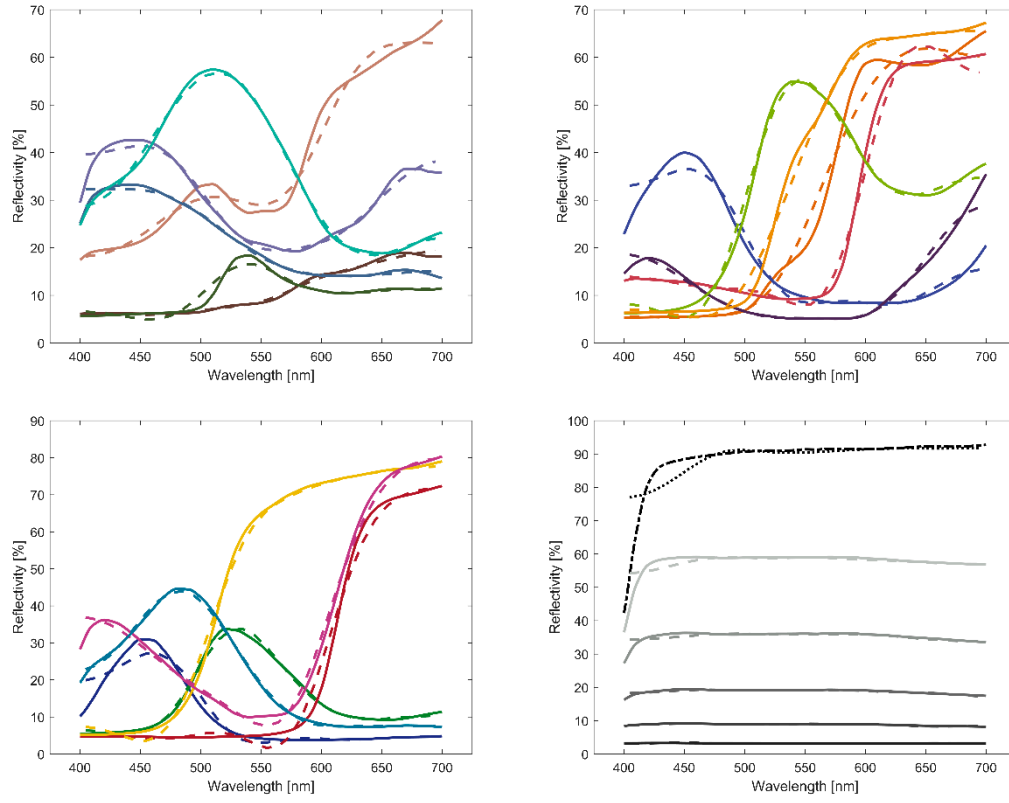


Figure 10: Reconstructed reflectivity spectra for  $N=6$  acquisition channels.