

# Evaluation of the Health Status of Indonesian Watersheds Using Impervious Surface Area as an Indicator

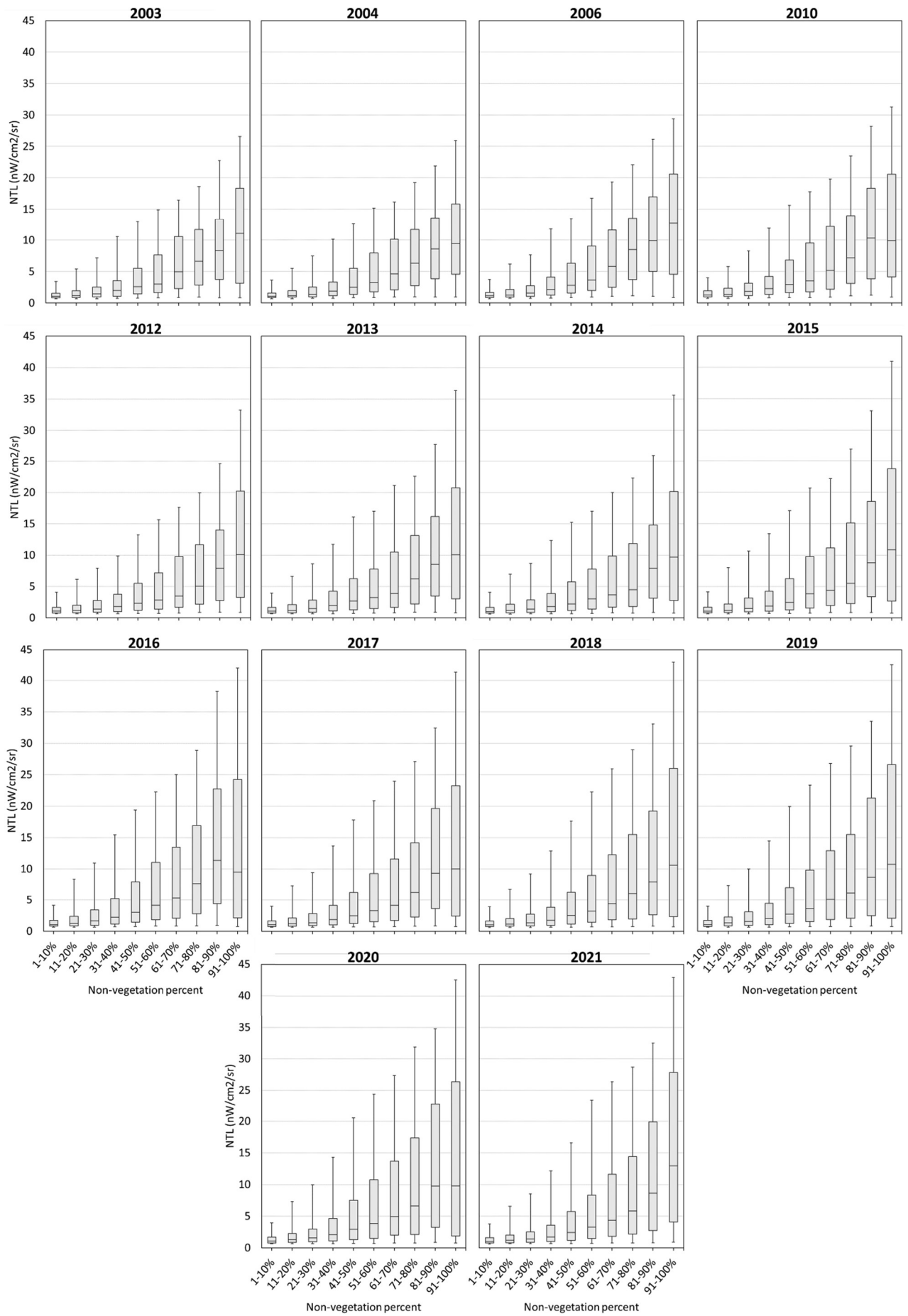
Rossi Hamzah <sup>1,2</sup> and Bunkei Matsushita <sup>3,\*</sup>

1 Graduate School of Life and Environmental Sciences, University of Tsukuba, Tennoudai 1-1-1, Tsuku-ba 305-8572, Japan; s1730209@u.tsukuba.ac.jp

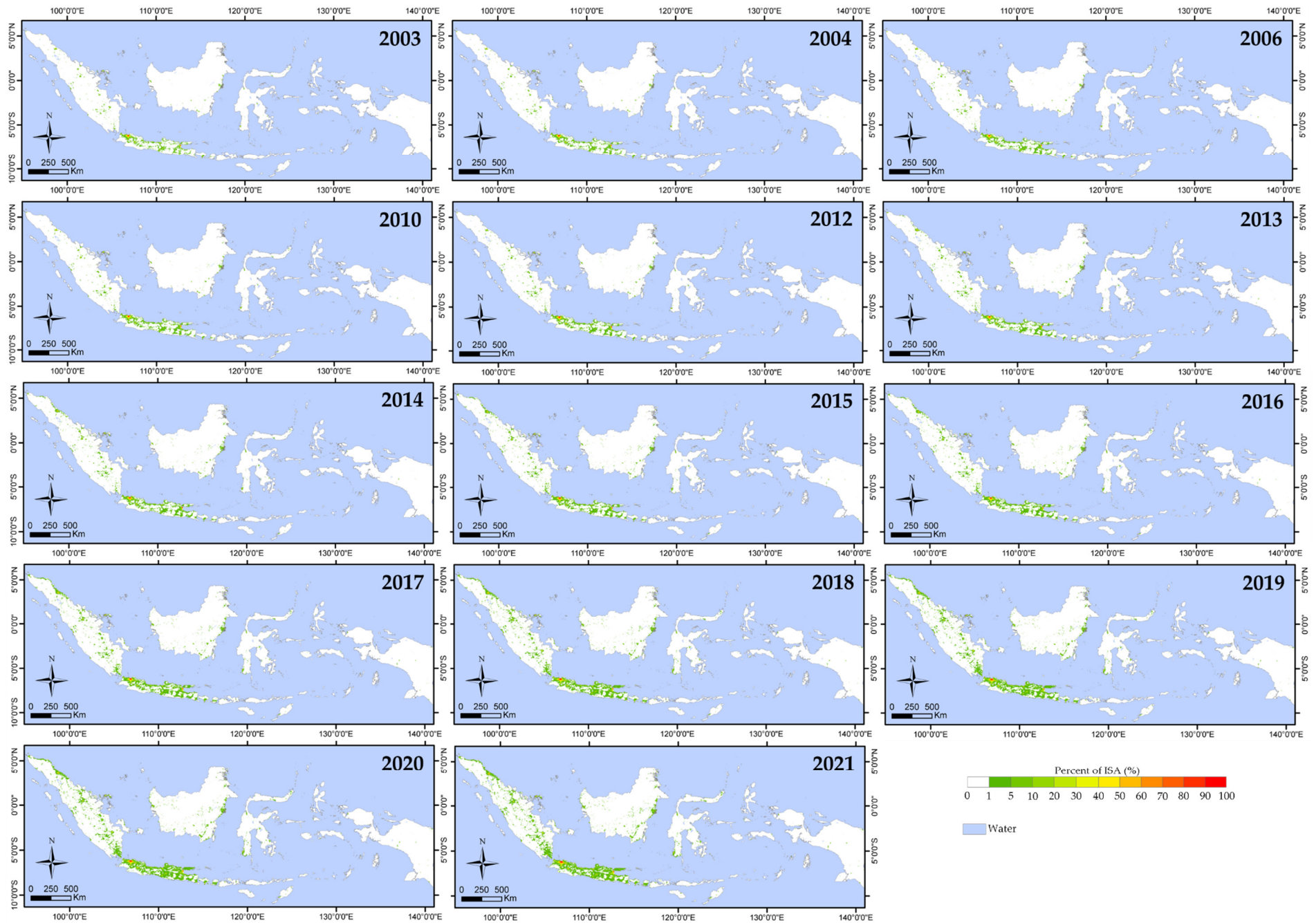
2 Research Center for Remote Sensing, National Research and Innovation Agency (BRIN), Bogor, West Java 16911, Indonesia

3 Faculty of Life and Environmental Sciences, University of Tsukuba, Tennoudai 1-1-1, Tsukuba 305-8572, Japan

\* Correspondence: matsushita.bunkei.gn@u.tsukuba.ac.jp; Tel.: +81-29-853-7190

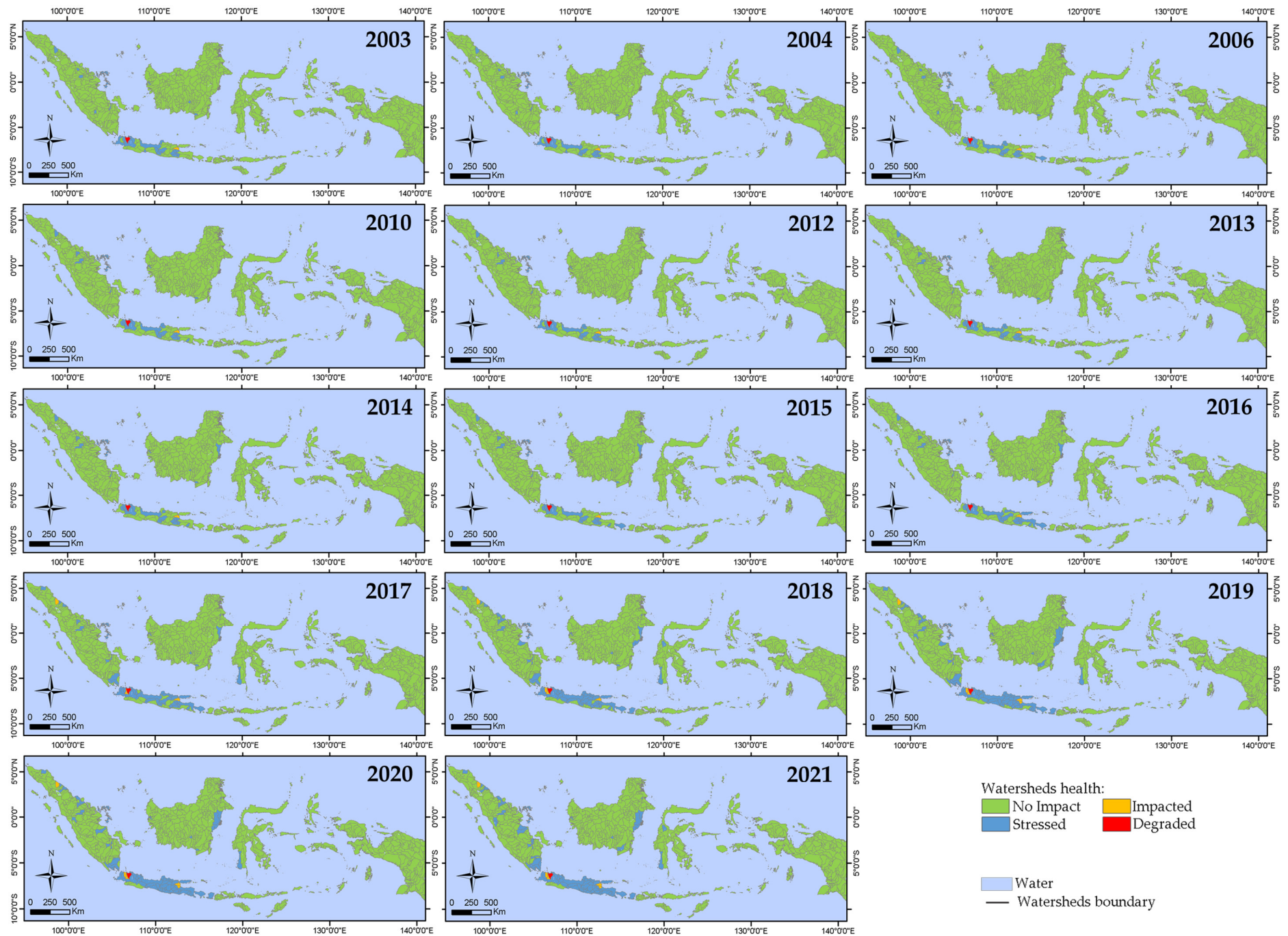


**Figure S1.** Statistics of  $NTL_{corrected}$  values for 10 non-vegetation fraction groups ranging from 1% to 100% divided into deciles from 2003 to 2021. For each group, the 5%, 25%, 50%, 75%, 95% percentiles are shown.



**Figure S2.** Distribution maps of ISA% in Indonesia from 2003 to 2021.





**Figure S3.** Distribution maps of watershed health status in Indonesia from 2003 to 2021.