

Article

On Secure Simple Pairing in Bluetooth Standard v5.0-Part I: Authenticated Link Key Security and Its Home Automation and Entertainment Applications

Da-Zhi Sun *  and Li Sun

Tianjin Key Laboratory of Advanced Networking (TANK), Division of Intelligence and Computing, Tianjin University, No. 135, Yaguan Road, Tianjin Haihe Education Park, Tianjin 300350, China; sunlibella@tju.edu.cn

* Correspondence: sundazhi@tju.edu.cn; Tel.: +86-22-2740-1091

Received: 31 December 2018; Accepted: 28 February 2019; Published: 7 March 2019



Abstract: Bluetooth is an important technical standard for short-range and low-power wireless communication. The home automation and entertainment (HAE) systems often make use of Bluetooth technology to link different Bluetooth devices and form Bluetooth networks. The security concerns of the HAE systems are raised due to massive deployment of the Bluetooth devices. The Bluetooth standard mainly depends on the secure simple pairing (SSP) solution to protect the Bluetooth devices. Hence, we investigate the SSP solution according to the Bluetooth standard v5.0. The contributions are threefold. (1) A formal security model is proposed to evaluate SSP's association models and authenticated link key. (2) We formally analyze two SSP protocols and present the security requirements for basic cryptographic modules in these SSP protocols. (3) We discuss the typical SSP applications in the HAE systems. Our results are useful to not only evaluating and designing the SSP protocols but also enhancing the security of the HAE systems in which the Bluetooth access is available.

Keywords: Bluetooth standard; Secure simple pairing; Cryptographic protocol; Security model; Authenticated link key; Home automation and entertainment

1. Introduction

Owing to the rapid development of the Internet of Things (IoT), the home automation and entertainment (HAE) systems simplify the controls of different home appliances and enhance their convenience, safety, and comfort via either wired or wireless communication. The idea of HAE emphasizes that multiple home appliances could be controlled by a single controller via a home network. We see that Bluetooth [1] always provides the private wireless connections and the confidential data transmissions among home appliances because the Bluetooth services maintain ubiquity, reliability, and interoperability. In fact, how to integrate Bluetooth into the HAE environments has drawn a great deal of attention and become a hot topic in the research community. However, the Bluetooth devices may leak confidential data and the adversary may monitor the Bluetooth channel during the communication procedure. Hence, Bluetooth security is very important when the Bluetooth services process sensitive information in the HAE systems.

According to latest Bluetooth standard v5.0 [2,3], it provides five different security features. That is, pairing, bonding, device authentication, encryption, and message integrity. We outline as follows.

- Pairing: Establishing shared keys among Bluetooth devices paired.
- Bonding: Establishing a trusted bonding relationship between two Bluetooth devices relying on pairing.

- Authentication: Verifying that the same key exists between two Bluetooth devices.
- Encryption: Keeping messages confidential.
- Message integrity: Verifying that messages are not forged.

From the technical perspective, pairing is the first and important step to ensure Bluetooth security, because the function of pairing is to establish a shared link key and the link key is the master key for other Bluetooth mechanisms. Currently, Bluetooth standard v5.0 [2,3] preferably supports secure simple pairing (SSP) to provide the function of pairing. SSP can prevent passive eavesdropping and man-in-the-middle (MITM) attacks. There are four association models of SSP depending on IO capabilities of devices, i.e., numeric comparison (NC), out of band (OOB), passkey entry (PE), and just works (JW). SSP must use one of these association models to complete the pairing procedure. Actually, four association models form four different SSP protocols, i.e., the NC protocol, the OOB protocol, the PE protocol, and the JW protocol.

The main goal of our research is to address the security and the privacy of SSP in Bluetooth standard v5.0. This paper is part one, which focuses on the security of SSP and its HAE applications. We formally address the security of the authenticated link key generated by SSP. That is, we mainly focus on the security of the NC and OOB protocols. Some result of the PE protocol is presented directly. We do not specially discuss the JW protocol, because the JW protocol is the same as the NC protocol except that it does not defeat MITM attacks. We also investigate how to integrate the typical SSP applications into the HAE systems. Part two of our research will focus on the privacy issue of SSP in Bluetooth standard v5.0.

1.1. Related Work

Much attention has been devoted to the SSP security in four association models along with a wide utilization in Bluetooth technology. Lindell [4] proposed that the PE protocol would leak password by eavesdropping attack on a legitimate conversation or an active attack on password-protected devices, which may cause MITM attacks. Haataja et al. [5,6] proposed MITM attacks might be implemented as follows. (1) The adversary forges information during IO capabilities exchange and forces device to use the JW protocol. Padgett et al. [7] also discussed this vulnerability. (2) Legitimate users are misled to select a less secure option instead of using a more secure OOB channel. Sandhya et al. [8] and Phan et al. [9] all explored basic security properties required by SSP, i.e., known key security, key control, perfect forward secrecy, key-compromise impersonation, unknown key-share attack resilience, MITM attack resilience, and offline dictionary attack resilience. Barnickel et al. [10] showed that the PE protocol leaks passkey to any adversary eavesdropping and is vulnerable to MITM attacks if the user uses the same passkey twice (or a fixed passkey is used). Albahar et al. [11] enhanced the JW protocol to prevent MITM attacks by adding a question and answer phase to ask both Bluetooth devices about IO capabilities. Gajbhiye et al. [12,13] overviewed security issues that may result in MITM attacks on Bluetooth devices and improved SSP with the delayed-encrypted input-output mechanism to defeat MITM attacks. In addition, they also gave the simulation and the security analysis of the NC protocol. Sun et al. [14] showed that the PE protocol is vulnerable to MITM attacks, once the host reuses the passkey. Lonzetta et al. [15] examined the Bluetooth's risks in the smart homes and their countermeasures, where SSP is suggested to take place of legacy personal identification number (PIN) authentication to avoid PIN cracking attacks.

Despite a great deal of analysis of SSP's vulnerabilities and countermeasures up to now, there is little formal analysis of SSP in different association models. Bellare et al.'s formal works [16–21] gave us a great inspiration to formally prove the security of the SSP protocols. Formal verifications of the NC protocol and the OOB protocol using ProVerif were proposed in [22]. Yeh et al. [23] presented the weaknesses of SSP, that is, the adversary could exploit the public keys exchanged in SSP protocol to carry out MITM attacks because the public keys are not authenticated. Benin et al. [24] addressed secure association for devices whose association process is vulnerable to MITM attacks and formally proved that their new message recognition protocol satisfies their security definition. Lindell [25]

presented a rigorous proof that the NC protocol for device pairing in Bluetooth standard v2.1 is secure of non-triviality, correctness, and privacy.

Customers raise security concerns due to the massive deployment of the Bluetooth HAE systems. Health monitoring system [26] needs to transfer private health data. Wearables [27,28] store and share many sensitive data. Bluetooth smart analyzer [29] is related to users' indoor location. Home smart lock systems [30–34] provide access to the door only for the authorized users. IoT-based emergency and disaster relief system [35] needs to share private data to different service providers. Voice operated room automation system [36] involves both connection of personal devices and transmission of private data. Bluetooth-based indoor localization systems [37–39] must prevent forgery and substitution attack by malicious users. All above HAE systems adopt the Bluetooth services to provide transmission and storage functions for sensitive information. Hence, it is indispensable to provide the rigorous analysis of the SSP security.

1.2. Our Contribution

SSP negotiates the authenticated link key for the pairing Bluetooth devices and employs the NC, OOB, and PE models to prevent MITM attacks. In this paper, the contribution of the SSP security and its HAE applications can be summarized as follows. Firstly, we develop a formal security model to evaluate the security of both the authenticated link key and the NC, OOB, and PE models. Unlike previous work, our security model is applicable to the formal analysis of all SSP protocols. Secondly, we mainly analyze the NC protocol and the OOB protocol under our formal security model and present the security requirements for the basic cryptographic modules in these protocols. Above results will contribute to not only the improvements on the SSP protocols but also the design of their basic cryptographic modules. Thirdly, we explore the typical SSP applications in the HAE systems and propose three principles for SSP, when the security promise is the necessity for the HAE systems. In addition, we compare the related SSP protocols in the aspects of the security and the efficiency and design the SSP implementation plans for the HAE systems.

To our best knowledge, it lacks the formal security model, which can evaluate all SSP protocols under the Bluetooth systems. However, in practice, the highly secure level of the cryptographic protocol must provide the security proof in the formal security model. A substantial contribution of our research is a formal security model for all SSP protocols, which also can be reused to evaluate the similar protocols in future Bluetooth standard. And the security proofs of the NC protocol and the OOB protocol demonstrate that the formal security model can be effectively applied. Although SSP has been used in many HAE systems, no literature gives the tutorial rules about how to deploy SSP. Note that the implementation costs of SSP are expensive for devices. Our principles for SSP aim to fill in gaps and provide the Bluetooth engineers with meaningful guidance.

1.3. Notation

The standard notation as in Table 1 is used throughout the rest of the paper. Some notation will be defined locally near its first use, and other notation will be used without further definition.

Table 1. Description of notation.

Term	Definition
Π_1	NC protocol
Π_2	OOB protocol
Π	Any one of Π_1 and Π_2
$\Pi_i^{A,B}$	Bluetooth device A's Π_i instance run with Bluetooth device B, where $i \in \{1, 2\}$
$\Pi^{A,B}$	Bluetooth device A's any Π_1 or Π_2 instance run with Bluetooth device B
BD_ADDR	Bluetooth address
X or BD_ADDR _X	BD_ADDR of Bluetooth device X
IOcapX	IO capabilities of Bluetooth device X
btlk	A predefined bit string
(SK _X , PK _X)	The Elliptic Curve Diffie-Hellman (ECDH) private-public key pair of Bluetooth device X
DHKey	Diffie-Hellman key
LK	Link key
N _X	Nonce (unique random value) generated by Bluetooth device X
r _X	Random value generated by Bluetooth device X
C _X	Commitment generated by Bluetooth device X
V _X	Confirmation six-digit number on Bluetooth device X, which is only used in Π_1
E _X	Check value from Bluetooth device X
ac _X	Decision in X's instance, where $ac_X \in \{\text{true}, \text{false}, *\}$ and * denotes no decision yet made
P256()/P192()	Used to compute DHKey. If both Bluetooth devices' hosts and controllers support secure connections, P256() is used; otherwise, P192() is used
f1()	Used to generate commitment value C _X
f2()	Used to compute LK from DHKey and random nonces
f3()	Used to generate check value E _X
g()	Used to compute six-digit numeric check value V _X
Prob(E)	Probability of event E occurring

2. Secure Simple Pairing

2.1. Overview

SSP consists of five consecutive phases in the following.

Phase 1: Public key exchange

Phase 2: Authentication stage 1

Phase 3: Authentication stage 2

Phase 4: Link key calculation

Phase 5: LMP (link manager protocol) authentication and encryption

The NC protocol and the OOB protocol respectively employ different mechanisms in Phase 2. Nevertheless, other phases are totally the same. And Phase 5 is responsible for authentication and generation of the encryption key. We will omit Phase 5, because Phase 5 is treated as an independent security mechanism and we do not investigate the security of Phase 5.

2.2. Numeric Comparison Protocol

The NC protocol Π_1 is illustrated in Table 2. Any pair of Bluetooth devices A and B can authenticate each other and negotiate a LK after a run of Π_1 .

Table 2. Numeric comparison (NC) protocol.

Protocol Π_1	
Pre-protocol exchange: Devices A and B exchange their Bluetooth addresses A and B as well as their IO capabilities IOcapA and IOcapB and a predefined bit string btlk.	
Phase 1: Public key exchange	
1.	The initiating device A generates its own private-public key pair (SKa, PKa) and sets $ac_a = *$. Here, the private-public key pair is generated only once per device and may be computed in advance of pairing. And then, the device A sends PKa to the non-initiating device B.
2.	Similarly, the device B generates (SKb, PKb), sets $ac_b = *$, and sends PKb to the device A.
3.	The device A computes DHKey = P192(SKa, PKb) = SKa·PKb or P256(SKa, PKb) = SKa·PKb. The device B computes DHKey = P192(SKb, PKa) = SKb·PKa or P256(SKb, PKa) = SKb·PKa.
Phase 2: Authentication stage 1 for NC	
1.	The device A selects random Na and sets ra and rb to 0.
2.	The device B selects random Nb and sets rb and ra to 0. The device B further computes $Cb = f1(PKbx, PKax, Nb, 0)$, where PKbx and PKax respectively denote the x-coordinate of the public keys PKb and PKa. Then, the device B sends Cb to the device A.
3.	The devices A and B exchange their Na and Nb.
4.	Upon receiving Nb, the device A checks if $Cb = f1(PKbx, PKax, Nb, 0)$. If the check fails, the device A sets $ac_a = \text{false}$ and aborts the protocol execution.
5.	The device A computes $Va = g(PKax, PKbx, Na, Nb)$ and displays Va. Similarly, the device B computes $Vb = g(PKax, PKbx, Na, Nb)$ and displays Vb.
6.	User checks if $Va = Vb$ and confirms on each end. If user confirms ‘yes’, proceed the following phase; otherwise both the device A and the device B set $ac_a = \text{false}$ and $ac_b = \text{false}$ and terminate it, respectively.
Phase 3: Authentication stage 2	
1.	The device A computes $Ea = f3(\text{DHKey}, Na, Nb, rb, \text{IOcapA}, A, B)$ and sends Ea to the device B.
2.	Upon receiving Ea, the device B checks whether $Ea = f3(\text{DHKey}, Na, Nb, rb, \text{IOcapA}, A, B)$. If check fails, the device B must set $ac_b = \text{false}$ and abort the protocol execution. Otherwise, the device B accepts the integrity of the device A and sets $ac_b = \text{true}$, computes $Eb = f3(\text{DHKey}, Nb, Na, ra, \text{IOcapB}, B, A)$, and sends Eb to the device A.
3.	Upon receiving Eb, the device A checks whether $Eb = f3(\text{DHKey}, Nb, Na, ra, \text{IOcapB}, B, A)$. If check fails, the device A must set $ac_a = \text{false}$ and abort the protocol execution; else the device A accepts the integrity of the device B and sets $ac_a = \text{true}$.
Phase 4: Link key calculation	
1.	The device A computes $LK = f2(\text{DHKey}, Na, Nb, \text{“btlk”}, \text{BD_ADDRa}, \text{BD_ADDRb})$.
2.	The device B computes $LK = f2(\text{DHKey}, Na, Nb, \text{“btlk”}, \text{BD_ADDRa}, \text{BD_ADDRb})$.

2.3. Out of Band Protocol

Phases 1, 3, and 4 of the OOB protocol Π_2 are same as those of the NC protocol Π_1 in Table 2. However, Π_2 's Phase 2 uses the OOB mechanism instead of the NC mechanism in Π_1 's Phase 2. The OOB mechanism in Π_2 is shown in Table 3.

Table 3. Out of band (OOB) mechanism.

Protocol Π_2 's Phase 2	
Phase 2: Authentication stage 1 for OOB	
1.	The device A sets $ra = rand_1$ and $rb = 0$ and the device B also sets $rb = rand_2$ and $ra = 0$. Here, $rand_1$ and $rand_2$ are random numbers.
2.	The device A computes $Ca = f1(PKax, PKax, ra, 0)$, where $PKax$ denotes the x-coordinate of the public key PKa . And the device B also computes $Cb = f1(PKbx, PKbx, rb, 0)$, where $PKbx$ denotes the x-coordinate of the public key PKb .
3.	The device A sends A , ra , and Ca to B through the human-aided OOB channel. And the device B also sends B , rb , and Cb to A through the human-aided OOB channel.
4.	Upon receiving B , rb , and Cb , the device A resets rb to the received value and if $Cb \neq f1(PKbx, PKbx, rb, 0)$ the device A sets $ac_a = false$ and aborts the protocol execution. If step 3 received and B's IO capability does not indicate OOB authentication data present set, set $ra = 0$.
5.	Upon receiving A , ra , and Ca , the device B resets ra to the received value and if $Ca \neq f1(PKax, PKax, ra, 0)$ the device B sets $ac_b = false$ and aborts the protocol execution. If step 3 received and A's IO capability does not indicate OOB authentication data present set, set $rb = 0$.
6.	The device A selects random Na and the device B selects random Nb .
7.	The devices A and B exchange Na and Nb to each other.

3. Security Model

In the following, we propose a formal security model to evaluate the SSP protocols. Our formal security model generally simulates the networking of the Bluetooth devices and catches the potential attack behaviours when an SSP protocol is run over public channels. Our formal security model can slightly be adjusted to fit any particular deployment model. Of course, it is suitable for the Bluetooth applications in the HAE systems.

3.1. Background

We adapt the idea of the secure key exchange definitions [16–21] to our setting. Although the basic ideas are similar, there are some of fundamental differences between our model and the classic model for key exchange.

Firstly, the Bluetooth devices do not interact via remote channels, such as Internet channel. Therefore, the users are able to carry out a short numeric comparison, monitor the OOB procedure, or enter the passkey through the Bluetooth devices. This feature can be used to prevent the adversary from carrying out the traditional MITM attack. In the following, we respectively model the numeric comparison and monitoring the OOB procedure as part of the NC protocol and the OOB protocol.

(1) For the NC protocol. Each Bluetooth device participating in a key exchange holds a local public 'comparison variable'. This variable is public in the sense that the adversary can read its value as his wish. Moreover, the comparison variable can be generated and showed only once in any instance of the NC protocol. The user, therefore, can compare the number and respond 'yes' or 'no' only once. Obviously, multiple comparisons have more limited use in practice and alert the possible attack.

(2) For the OOB protocol. The adversary is able to only listen to the messages in the OOB channel. The adversary is not allowed to inject, modify, and delete messages over the OOB channel.

Secondly, SSP does not have public-key infrastructure or secret setup information. This is in contrast to the classic shared secret setting, where each pair of parties hold a shared secret key. Despite this, SSP is supposed to be secure in the presence of both active adversary and passive adversary.

Thirdly, the classic model for key exchange focuses on the adversary to learn the secret key that one of the parties obtains at the end of a protocol execution. Comparatively, our model requires the adversary only succeeds if he not only learns the ink key but also passes the authentication procedure of the association model according to Phase 2 in each protocol execution.

In our setting, we assume that each Bluetooth device at most runs one instance of the protocol at the same time. That is, we only allow each Bluetooth device to run many instances sequentially.

It makes no sense to allow a single Bluetooth device to run many instances simultaneously. The reason is that each Bluetooth device has only one interface for displaying the comparison variable and the OOB channel such as near field communication (NFC) and therefore always is unable to run two or more instances simultaneously.

3.2. Adversary

Assume that the adversary can fully control the Bluetooth network system. During the protocol execution, the adversary has the ability to not only passively eavesdrop the messages exchanged by the Bluetooth device but also actively inject, modify, and delete messages of the Bluetooth device. The adversarial power is modeled by giving the adversary oracle access to the protocol instances that are run by the Bluetooth devices. The oracles provided to the adversary are as follows:

(1) $\text{Init}(A, B)$: This call initializes the partnered instances $\Pi^{A,B}$ and $\Pi^{B,A}$ for Π . Without loss of generality, we always assume A is the initiating device and B is the non-initiating device in the following discussion. If an instance for the device A or the device B is already run, then the Init oracle does nothing; else the Init oracle starts the instances $\Pi^{A,B}$ and $\Pi^{B,A}$ as a new protocol execution.

(2) $\text{Send}(\Pi^{A,B}, M)$ or $\text{Send}(\Pi^{B,A}, M)$: When this Send oracle is called, it sends the message M to the device A 's $\Pi^{A,B}$ or the device B 's $\Pi^{B,A}$. The output of the Send oracle is whatever message $\Pi^{A,B}$ or $\Pi^{B,A}$ would send after receiving the message M under the current progress of the Π 's execution. The adversary can carry out MITM attacks on the protocol executions by calling the Send oracles.

(3) $\text{Execute}(A, B)$: When the Execute oracle is called, a complete protocol execution between the partnered instances $\Pi^{A,B}$ and $\Pi^{B,A}$ is run. The output of the Execute oracle is the protocol transcript, i.e., the complete series of messages exchanged by the protocol execution. This oracle simulates the adversary's ability to passively eavesdrop on the protocol executions. For a secure protocol, the adversary should learn nothing from such oracle calls.

(4) $\text{Reveal}(\Pi^{A,B})$ or $\text{Reveal}(\Pi^{B,A})$: This call outputs LK that the device A 's $\Pi^{A,B}$ or the device B 's $\Pi^{B,A}$ generates at the end of this protocol execution. If the device A 's $\Pi^{A,B}$ or the device B 's $\Pi^{B,A}$ does not generate LK , the Reveal oracle outputs a null. This oracle allows the adversary to learn the link keys from previous executions. This Reveal oracle simulates the improper exposure of link keys. To achieve the security, the protocol needs to ensure independence of different link keys generated by different protocol executions.

(5) $\text{Test}(\Pi^{A,B})$ or $\text{Test}(\Pi^{B,A})$: This call is used to define the security of the protocol and does not simulate any real adversarial ability. To answer the query, the Test oracle flips a fair random coin b and returns LK if $b = 0$ or else a random key with the same bit length of LK if $b = 1$. Note that this random key is chosen independently of the protocol executions. The adversary is only allowed to query the Test oracle once. We require the adversary to guess the random bit b according to the Π 's executions.

3.3. Defining Security

The security definition of the SSP protocols is composed of two basic components: correctness and authenticated link key security. We begin by stating the correctness requirement.

For Π , correctness is viewed as the customary requirement properly given honest Bluetooth devices. If any partnered instances $\Pi^{A,B}$ and $\Pi^{B,A}$ communicate without adversarial interference (that is, the adversary never invokes the Send oracle to both $\Pi^{A,B}$ and $\Pi^{B,A}$), then $\Pi^{A,B}$ and $\Pi^{B,A}$ accept each other at the end of the protocol execution (that is, $\text{ac}_a = \text{ac}_b = \text{true}$). Accurately,

Definition 1 (Correctness). An SSP protocol Π is correct if, given any Bluetooth device A and any Bluetooth device B , any polynomial time protocol experiment executed by partnered instances $\Pi^{A,B}$ and $\Pi^{B,A}$ succeeds with overwhelming probability. Here, the polynomial time protocol experiment is successful if and only if $\text{ac}_a = \text{ac}_b = \text{true}$ at the end of the run of instances $\Pi^{A,B}$ and $\Pi^{B,A}$ and the Bluetooth device A and the Bluetooth device B are legitimate.

It is a challenge to propose a unified security definition for Π , because Π may use NC, OOB, or PE in its Phase 2. Our idea is to divide the security definition into two subparts, i.e., authentication security and link key security. Moreover, although Π perhaps employs different association models in its Phase 2, our security definition merely focuses on the result of authentication processes.

We now define what it means for Π to be secure. Assume that the adversary \mathcal{A} did not query $\text{Reveal}(\Pi^{A,B})$ or $\text{Reveal}(\Pi^{B,A})$, where the instances $\Pi^{A,B}$ and $\Pi^{B,A}$ are partnered. Formally, we say that the adversary \mathcal{A} succeeds if the following two conditions are all fulfilled:

Condition 1. Both $\Pi^{A,B}$ and $\Pi^{B,A}$ finally accept each other, i.e., $ac_a = ac_b = \text{true}$.

Condition 2. The adversary \mathcal{A} calls $\text{Test}(\Pi^{A,B})$ or $\text{Test}(\Pi^{B,A})$ and then outputs a bit b_{guess} . If the bit b_{guess} is equal to the fair random coin b in the Test oracle, then the adversary \mathcal{A} succeeds; else the adversary \mathcal{A} fails.

The adversary \mathcal{A} 's advantage is defined by:

$$\text{Adv}(\mathcal{A}) = |2\text{Prob}(\mathcal{A} \text{ succeeds in achieving both Condition 1 and Condition 2}) - 1|. \quad (1)$$

Explanation. Intuitively, an SSP protocol is secure if the adversary \mathcal{A} cannot distinguish real link keys from random ones. This means that the Bluetooth devices can securely use their link keys to establish secure channels. For more discussions on this issue, we refer to see [16–18]. Due to the SSP protocols, we demand that the adversary \mathcal{A} correctly guesses the fair random coin b in either the $\text{Test}(\Pi^{A,B})$ oracle or the $\text{Test}(\Pi^{B,A})$ oracle, if and only if both $\Pi^{A,B}$ and $\Pi^{B,A}$ accept each other. The reason is that the Bluetooth user will reject the pairing result and at least one of $\Pi^{A,B}$ and $\Pi^{B,A}$ does not output the link key if $\Pi^{A,B}$ or $\Pi^{B,A}$ unsuccessfully finishes. Moreover, the user should find this abnormal case and terminate the subsequent Bluetooth communication. In addition, the adversary \mathcal{A} can always correctly guess the fair random coin b in a $\text{Test}(\Pi^{A,B})$ or $\text{Test}(\Pi^{B,A})$ query if he queried $\text{Reveal}(\Pi^{A,B})$ or $\text{Reveal}(\Pi^{B,A})$ before. This is a trivial case. Hence, the adversary \mathcal{A} is only said to have succeeded if these Reveal oracles were not queried.

Let n or 1^n be the security parameter. A real-valued function $f: \mathbb{N} \rightarrow [0, 1]$ is negligible if for every polynomial $p()$ there exists an integer N such that for every $n > N$ it holds that $f(n) < 1/p(n)$. In the following, we denote an arbitrary negligible function by negl . We define the notion of authenticated link key security as follows.

Definition 2 (Authenticated link key security). For an SSP protocol Π , the adversary \mathcal{A} starts with a learning phase allowing the polynomial time queries of the Init, Send, Execute, and Reveal oracles for any pairing Bluetooth device. The adversary \mathcal{A} then enters into an attack phase pursuing with a Test oracle query. The adversary \mathcal{A} provides the partnered instances $\Pi^{A,B}$ and $\Pi^{B,A}$ related to Bluetooth device A and Bluetooth device B, where the Reveal oracle is not queried to the instances $\Pi^{A,B}$ and $\Pi^{B,A}$. Now, the adversary \mathcal{A} calls $\text{Test}(\Pi^{A,B})$ or $\text{Test}(\Pi^{B,A})$ and then outputs a bit b_{guess} . The SSP protocol Π is secure for authenticated link key if there exists a negligible function negl such that

$$\begin{aligned} \text{Prob}(\mathcal{A} \text{ succeeds}) &= \text{Prob}(\mathcal{A} \text{ submits } \Pi^{A,B} \text{ and } \Pi^{B,A} \text{ and his bit } b_{\text{guess}} \text{ such that } ac_a = ac_b = \text{true} \\ &\text{and } b_{\text{guess}} = b) < \frac{1}{2} + \text{negl}(n), \end{aligned} \quad (2)$$

where ac_a and ac_b are the decisions in the partnered instances $\Pi^{A,B}$ and $\Pi^{B,A}$, b is the fair random coin in the Test oracle, and n is the security parameter of Π .

Definition 2 does not show an obvious way to prove the SSP protocols secure. Our trick of the proof is to classify the active adversary and the passive adversary and respectively prove the intermediate security results of the SSP protocols under the active adversary and the passive adversary. We can use these intermediate security results to deduce the final security results of the SSP protocols, which satisfy Definition 2. The detailed analysis is in the following.

In the learning phase of Definition 2, it is clear that the Send, Init, and Reveal oracles queries are active behavior, however, the Execute oracle queries are passive behavior. Hence, the adversary \mathcal{A} further can be divided into the active adversary \mathcal{A}_1 and the passive adversary \mathcal{A}_2 as follows.

(1) Active adversary \mathcal{A}_1 : As Definition 2, \mathcal{A}_1 must send at least one fabricated message to $\Pi^{A,B}$ or $\Pi^{B,A}$. Here, \mathcal{A}_1 can use the Init and Send oracles to realize it during the learning phase.

(2) Passive adversary \mathcal{A}_2 : As Definition 2, \mathcal{A}_2 never sends any his own fabricated message to both $\Pi^{A,B}$ and $\Pi^{B,A}$ during the learning phase. In fact, \mathcal{A}_2 functions just like a wire, even he can invoke the Init and Send oracles.

Theorem 1. Consider an SSP protocol Π under Definition 2. Let E_1 denote the event that the active adversary \mathcal{A}_1 submits the partnered instances $\Pi^{A,B}$ and $\Pi^{B,A}$ such that $ac_a = ac_b = \text{true}$. Let E_2 denote the event that the passive adversary \mathcal{A}_2 submits the partnered instances $\Pi^{A,B}$ and $\Pi^{B,A}$, calls $\text{Test}(\Pi^{A,B})$ or $\text{Test}(\Pi^{B,A})$, and outputs the bit b_{guess} such that $b_{\text{guess}} = b$. We have

$$\begin{aligned} \text{Prob}(\mathcal{A} \text{ succeeds}) &= \text{Prob}(\mathcal{A} \text{ submits } \Pi^{A,B} \text{ and } \Pi^{B,A} \text{ and his bit } b_{\text{guess}} \text{ such that } ac_a = ac_b = \text{true} \\ &\text{and } b_{\text{guess}} = b) \leq \text{Prob}(E_1) + \text{Prob}(E_2). \end{aligned} \quad (3)$$

Proof 1. According to Definition 2, it holds that

$$\begin{aligned} &\text{Prob}(\mathcal{A} \text{ submits } \Pi^{A,B} \text{ and } \Pi^{B,A} \text{ and his bit } b_{\text{guess}} \text{ such that } ac_a = ac_b = \text{true and } b_{\text{guess}} = b) \\ &\leq \text{Prob}(\mathcal{A}_1 \text{ achieves } ac_a = ac_b = \text{true and } b_{\text{guess}} = b \text{ for } \Pi^{A,B} \text{ and } \Pi^{B,A}) + \text{Prob}(\mathcal{A}_2 \text{ achieves } \\ &\quad ac_a = ac_b = \text{true and } b_{\text{guess}} = b \text{ for } \Pi^{A,B} \text{ and } \Pi^{B,A}). \end{aligned} \quad (4)$$

Since the passive adversary \mathcal{A}_2 never sends any his own fabricated message to both $\Pi^{A,B}$ and $\Pi^{B,A}$ in the learning phase, both ac_a and ac_b in $\Pi^{A,B}$ and $\Pi^{B,A}$ are always true at the end of the protocol execution. It further means that

$$\begin{aligned} &\text{Prob}(\mathcal{A} \text{ submits } \Pi^{A,B} \text{ and } \Pi^{B,A} \text{ and his bit } b_{\text{guess}} \text{ such that } ac_a = ac_b = \text{true and } b_{\text{guess}} = b) \leq \\ &\text{Prob}(\mathcal{A}_1 \text{ achieves } ac_a = ac_b = \text{true for } \Pi^{A,B} \text{ and } \Pi^{B,A}) + \text{Prob}(\mathcal{A}_2 \text{ achieves } b_{\text{guess}} = b \text{ for } \Pi^{A,B} \text{ and } \Pi^{B,A}). \end{aligned} \quad (5)$$

Note that we do not demand the active adversary \mathcal{A}_1 guessing the fair random coin b in the Test oracle. We now obtain the Equation (3) and complete the proof of theorem. \square

Theorem 1 tells us that the analysis of authenticated link key security can be simplified as two independent games, i.e., G_1 and G_2 . We explain them as follows. The game G_1 under any Π plays with the active adversary \mathcal{A}_1 , who uses the Init, Send, Execute, and Reveal oracles and tries to modify the message(s) between any partnered instances of Π during the learning phase. In the attack phase of Definition 2, the goal of the active adversary \mathcal{A}_1 is to provide his fabricated instances $\Pi^{A,B}$ and $\Pi^{B,A}$, which successfully pass the authentication procedure of Phase 2 and Phase 3 in Π . Comparatively, the game G_2 in the learning phase of Definition 2 interacts with the passive adversary \mathcal{A}_2 , who never modifies the messages between any partnered instances of Π . The goal of the passive adversary \mathcal{A}_2 is to distinguish the link key of a partnered instances $\Pi^{A,B}$ and $\Pi^{B,A}$ from a random key.

4. Correctness of Results

4.1. Correctness

Theorem 2. As described in Tables 2 and 3, Π_1 and Π_2 are all correct under Definition 1.

Proof 2. Assume that any Bluetooth device A and any Bluetooth device B under Π_1 are legitimate and the adversary does not interfere the Bluetooth devices' $\Pi_1^{A,B}$ and $\Pi_1^{B,A}$. In Π_1 's Phase 2, $\Pi_1^{A,B}$

should successfully check $C_b = f_1(PK_{bx}, PK_{Ax}, Nb, 0)$, and then the user should confirm 'ok' due to $V_a = V_b$. Then, in Π_1 's Phase 3, $\Pi_1^{A,B}$ and $\Pi_1^{B,A}$ respectively set $ac_a = \text{true}$ and $ac_b = \text{true}$ because $\Pi_1^{B,A}$ confirms $E_a = f_3(DHKey, Na, Nb, rb, IOcapA, A, B)$ and $\Pi_1^{A,B}$ confirms $E_b = f_3(DHKey, Nb, Na, ra, IOcapB, B, A)$. Therefore, Π_1 is correct according to Definition 1. For Π_2 , we can get a similar result for any partnered $\Pi_2^{A,B}$ and $\Pi_2^{B,A}$, i.e., $ac_a = \text{true}$ and $ac_b = \text{true}$. Those complete the proof. \square

4.2. Authenticated Link Key Security

Assume that the Diffie-Hellman key over the group G is generated by the Diffie-Hellman key exchange. The well-known Decisional Diffie-Hellman (DDH) assumption [40] states that the Diffie-Hellman key is indistinguishable from a random element in the group G . The DDH assumption is formally defined as follows.

Definition 3. Let $gen(1^n)$ be a parameter generation algorithm that outputs the description of a group G , its generator $P \in G$, and its order q . We say the DDH problem is hard relative to G if for all probabilistic polynomial time algorithms D there exists a negligible function $negl$ such that

$$| \text{Prob}(D(\text{gen}(1^n), a \cdot P, b \cdot P, ab \cdot P) = 1) - \text{Prob}(D(\text{gen}(1^n), a \cdot P, b \cdot P, c \cdot P) = 1) | < negl(n), \quad (6)$$

where a, b , and c are randomly chosen in $\{1, \dots, q\}$.

We say that a keyed function $H_1(k, \cdot)$ is the Diffie-Hellman keyed pseudorandom function if $H_1(k, \cdot)$ is a keyed pseudorandom function when its key k is a Diffie-Hellman key in a certain group G . We formally write it in Definition 4.

Definition 4. Let $gen(1^n)$ be a parameter generation algorithm that outputs the description of a group G , its generator $P \in G$, and its order q . Let $H_1(k, \cdot)$ be a keyed pseudorandom function using Diffie-Hellman key if for every probabilistic polynomial time distinguisher D^* there exists a negligible function $negl$ such that

$$| \text{Prob}(D^*(\text{gen}(1^n), a \cdot P, b \cdot P, H_1(ab \cdot P, \cdot)) = 1) - \text{Prob}(D^*(\text{gen}(1^n), a \cdot P, b \cdot P, R(\cdot)) = 1) | < negl(n), \quad (7)$$

where a and b are randomly chosen in $\{1, \dots, q\}$ and R is a truly random function.

Note that a rigorous pseudorandom function receives a uniformly distributed input. Therefore, it does not necessarily suffice for Definition 4, that is, a random element of G is not necessarily a uniformly distributed bit string. We also need two standard assumptions [40] for the cryptographic hash functions as follows.

Definition 5. Let $gen(1^n)$ be a parameter generation algorithm that outputs the description of a group G , its generator $P \in G$, and its order q . Let a and b be randomly chosen in $\{1, \dots, q\}$. Let $H_2(ab \cdot P, \cdot)$ be a message authentication code (MAC) function using Diffie-Hellman key if for every probabilistic polynomial time algorithm A there exists a negligible function $negl$ such that

$$\text{Prob}(A(H_2(ab \cdot P, \cdot)) \text{ outputs } (x, h) \text{ such that } h = H_2(ab \cdot P, x) \text{ and } x \notin Q) < negl(n), \quad (8)$$

where Q denotes all $H_2(ab \cdot P, \cdot)$ oracle queries asked by A and n is the security parameter of $H_2(ab \cdot P, \cdot)$.

Definition 6. Let $H_3(\cdot)$ be a collision-resistant function if for every probabilistic polynomial time algorithm A^* there exists a negligible function $negl$ such that

$$\text{Prob}(A^*(H_3(\cdot)) \text{ outputs } (x_0, x_1) \text{ such that } H_3(x_0) = H_3(x_1)) < negl(n), \quad (9)$$

where n is the security parameter of $H_3()$.

To reduce our security results, we firstly require proving three security facts for Π , Π_1 , and Π_2 as follows.

Lemma 1. Assume that $P256()$ and $P192()$ in Π satisfy the DDH assumption as in Definition 3 and $f2()$ and $f3()$ in Π are the Diffie-Hellman keyed pseudorandom function as in Definition 4. Let \mathcal{A}_2 be the passive adversary as described in Section 3.3. Then, Π_1 and Π_2 under the passive adversary \mathcal{A}_2 are all secure according to Definition 2.

Proof 3. We know that the passive adversary \mathcal{A}_2 during the learning phase in Definition 2 does not send his own fabricated message to both $\Pi^{A,B}$ and $\Pi^{B,A}$. Therefore, the passive adversary \mathcal{A}_2 can collect the transcripts of the protocol executions including those of $\Pi^{A,B}$ and $\Pi^{B,A}$. And then, to violate the security of Π , the passive adversary \mathcal{A}_2 during the attack phase in Definition 2 must strictly depend on correctly guessing the fair random coin b in the $\text{Test}(\Pi^{A,B})$ or $\text{Test}(\Pi^{B,A})$ oracle. That is, for any passive adversary \mathcal{A}_2 interacting with the Bluetooth device A and the Bluetooth device B, the secure Π should satisfy that

$$\text{Prob}(\mathcal{A}_2 \text{ succeeds}) = \text{Prob}(\mathcal{A}_2 \text{ submits } \Pi^{A,B} \text{ and } \Pi^{B,A} \text{ and his bit } b_{\text{guess}} \text{ such that } b_{\text{guess}} = b) < 1/2 + \text{negl}(n). \quad (10)$$

Recall that Π_1 and Π_2 have totally same Phases 1, 3, and 4. The only difference is that Π_1 uses the NC mechanism in Phase 2 and Π_2 uses the OOB mechanism in Phase 2. However, the passive adversary \mathcal{A}_2 does not exploit the weaknesses of these mechanisms, because they have no use of the Diffie-Hellman key. Moreover, both Π_1 's Phase 2 and Π_2 's Phase 2 finally output the random numbers N_a and N_b as the inputs of their subsequent phases. Therefore, in the view of the passive adversary \mathcal{A}_2 , Π_1 and Π_2 are same. Based on this observation, we can conformably present the formal proof for Π_1 and Π_2 . The formal reduction for them is as follows.

Let \mathcal{A}_2 be a probabilistic polynomial time passive adversary and let δ_1 be a function such that

$$\text{Prob}(\mathcal{A}_2 \text{ succeeds}) = \text{Prob}(\mathcal{A}_2 \text{ submits } \Pi^{A,B} \text{ and } \Pi^{B,A} \text{ and his bit } b_{\text{guess}} \text{ such that } b_{\text{guess}} = b) < 1/2 + \delta_1(n). \quad (11)$$

We demonstrate that δ_1 is negligible by presenting a DDH problem distinguisher D_1 with the same advantage δ_1 . The distinguisher D_1 receives $(a \cdot P, b \cdot P, K)$ and attempts to determine if $K = ab \cdot P$ or K is a random element in the group G . The distinguisher D_1 simulates Π 's $\Pi^{A,B}$ and $\Pi^{B,A}$ in the following:

Π 's Phase 1. When the passive adversary \mathcal{A}_2 calls the Send oracle to the Bluetooth device A for the public key, the distinguisher D_1 sends $PK_a = a \cdot P$ to him. When the passive adversary \mathcal{A}_2 calls the Send oracle to the Bluetooth device B for the public key, the distinguisher D_1 sends $PK_b = b \cdot P$ to him. Here, the passive adversary \mathcal{A}_2 should honestly resend PK_a to the Bluetooth device B and PK_b to the Bluetooth device A, because the passive adversary \mathcal{A}_2 does not modify any message.

Π 's Phase 2. The distinguisher D_1 acts exactly like the Bluetooth device A and the Bluetooth device B would.

Π 's Phase 3. The distinguisher D_1 uses its K as the Diffie-Hellman key. That is, the distinguisher D_1 computes $E_a = f3(K, N_a, N_b, r_b, \text{IOcapA}, A, B)$ and $E_b = f3(K, N_b, N_a, r_a, \text{IOcapB}, B, A)$ and sends them.

Π 's Phase 4. Like Π 's Phase 3, the distinguisher D_1 computes LK by $f2(K, N_a, N_b, \text{"btlk"}, \text{BD_ADDR}_a, \text{BD_ADDR}_b)$.

When the passive adversary \mathcal{A}_2 queries $\text{Test}(\Pi^{A,B})$ or $\text{Test}(\Pi^{B,A})$, the distinguisher D_1 chooses a random bit b and replies with LK if $b = 0$ and with a random number with the same bit-length of LK if $b = 1$. Finally, the distinguisher D_1 outputs 1 when the passive adversary \mathcal{A}_2 outputs $b_{\text{guess}} = b$.

In the view of the passive adversary \mathcal{A}_2 , above simulation by the distinguisher D_1 is exactly a Π 's execution, when $K = ab \cdot P$. Hence, we know

$$\text{Prob}(D_1(\text{gen}(1^n), a \cdot P, b \cdot P, ab \cdot P) = 1) = 1/2 + \delta_1(n). \quad (12)$$

When K is a random element in the group G , the parameters E_a , E_b , and LK are calculated using the random element K instead of $ab \cdot P$. Let $\delta_2(n)$ be a function such that the passive adversary \mathcal{A}_2 outputs $b_{\text{guess}} = b$ with probability $1/2 + \delta_2(n)$, where $\delta_2(n)$ is the advantage by exploiting E_a , E_b , and LK . We show that δ_2 is a negligible function and argue it by contradiction. Assume that δ_2 is a non-negligible function. We can construct the distinguisher D_2 to tell keyed pseudorandom function using Diffie-Hellman key from truly random function. The distinguisher D_2 generates its own (SK_a, PK_a) , (SK_b, PK_b) , and $DHKey$ and simulates the Π 's execution. In the distinguisher D_2 's simulation, the keyed pseudorandom functions $f_3(DHKey, \cdot)$ and $f_2(DHKey, \cdot)$ or the truly random functions are used to compute E_a , E_b , and LK . If the truly random functions exist, the passive adversary \mathcal{A}_2 outputs correct guess with probability $1/2$. If the keyed pseudorandom functions $f_3(DHKey, \cdot)$ and $f_2(DHKey, \cdot)$ are given to the distinguisher D_2 , it is the same as the case of the distinguisher D_1 with the random K . Hence, in this case, the distinguisher D_2 outputs correct guess with probability $1/2 + \delta_2(n)$. This implies that the advantage of the distinguisher D_2 is a non-negligible function $\delta_2(n)$, contradicting Definition 4. Hence, $\delta_2(n)$ must be a negligible function. Now, we further have

$$\begin{aligned} & |\text{Prob}(D_1(\text{gen}(1^n), a \cdot P, b \cdot P, ab \cdot P) = 1) - \text{Prob}(D_1(\text{gen}(1^n), a \cdot P, b \cdot P, K) = 1)| \\ &= |1/2 + \delta_1(n) - 1/2 - \delta_2(n)| = |\delta_1(n) - \delta_2(n)|. \end{aligned} \quad (13)$$

According to Definition 3, we know that $\delta_1(n)$ is also a negligible function due to the negligible function $\delta_2(n)$. Thus, we conclude that Π_1 and Π_2 under the passive adversary \mathcal{A}_2 are all secure for authenticated link key. \square

Lemma 2. Assume that as defined in [25], $f_1()$ is the computationally-binding non-malleable commitment scheme and $g()$ is a computational 2-universal hash function. Let $f_3()$ be a MAC function as in Definition 5. Let \mathcal{A}_1 be the active adversary of Π_1 as described in Section 3.3. Let E_3 denote the event that \mathcal{A}_1 submits his $\Pi_1^{A,B}$ and $\Pi_1^{B,A}$ such that $ac_a = ac_b = \text{true}$. Then, $\text{Prob}(E_3)$ is negligible.

Proof 4. Using the Send oracle, the active adversary \mathcal{A}_1 perhaps generates his own fabricated PK'_a , PK'_b , N'_a , N'_b , E'_a , and E'_b and sends them instead of PK_a , PK_b , Na , Nb , E_a , and E_b to the corresponding $\Pi_1^{A,B}$ and $\Pi_1^{B,A}$. Two cases need be considered as follows.

Case 1. The active adversary \mathcal{A}_1 alters the message(s) in Π_1 's Phase 1. Let the output of the function g be l -bit length. Let E_{31} denote the event that $g(PK_a, PK'_b, Na, N'_b) = g(PK'_a, PK_b, N'_a, Nb)$ and either $PK_a \neq PK'_a$ or $PK_b \neq PK'_b$ or both, where the active adversary \mathcal{A}_1 's PK'_a , PK'_b , N'_a , and N'_b are sent by calling the Send oracle(s) during the run of $\Pi_1^{A,B}$ and $\Pi_1^{B,A}$. In [25], Theorem 4.1 proves that $\text{Prob}(E_{31}) = 2^{-l} + \delta_3(n)$, where δ_3 is a negligible function.

Case 2. The active adversary \mathcal{A}_1 only alters the message(s) in Π_1 's Phase 2 or (and) Phase 3. Let E_{32} denote the event that the active adversary \mathcal{A}_1 sends $N'_a \neq Na$ or $N'_b \neq Nb$ or both to the corresponding $\Pi_1^{A,B}$ and $\Pi_1^{B,A}$ and $ac_a = ac_b = \text{true}$ after Π_1 's Phase 3. Let δ_4 be a function such that $\text{Prob}(E_{32}) = \delta_4(n)$. We demonstrate that the function δ_4 is negligible by presenting a forged MAC generator GT with the same advantage δ_4 . The forged MAC generator GT receives the description of the MAC function $f_3(DHKey, \cdot)$ and further attempts to at least generate new Mac pair (x, h) such that $h = f_3(DHKey, x)$. The forged MAC generator GT simulates $\Pi_1^{A,B}$ and $\Pi_1^{B,A}$ as follows.

1. The forged MAC generator GT performs the same operations as the Bluetooth device A and the Bluetooth device B in Π_1 's Phase 1 and Phase 2. That is, the forged MAC generator GT randomly chooses (SK_a, PK_a) and (SK_b, PK_b) , sends PK_a and PK_b , and computes $DHKey$ in Π_1 's Phase 1.

And then, the forged MAC generator GT randomly selects N_a and N_b and sends C_b , N_a , and N_b in Π_1 's Phase 2.

2. The forged MAC generator GT observes that the active adversary \mathcal{A}_1 sends his own N'_a or (and) N'_b instead of N_a or (and) N_b to the corresponding $\Pi_1^{B,A}$ or (and) $\Pi_1^{A,B}$. Here, \mathcal{A}_1 can implement it by calling $\text{Send}(\Pi_1^{B,A}, N'_a)$ or (and) $\text{Send}(\Pi_1^{A,B}, N'_b)$.

3. In Π_1 's Phase 3, the forged MAC generator GT computes and sends $E_a = f_3(\text{DHKey}, N_a, N'_b, r_b, \text{IOcapA}, A, B)$ or (and) $E_b = f_3(\text{DHKey}, N_b, N'_a, r_a, \text{IOcapB}, B, A)$. The forged MAC generator GT observes that the active adversary \mathcal{A}_1 sends his own E'_a or (and) E'_b instead of E_a or (and) E_b . And then, based on receiving N'_a or (and) N'_b , the forged MAC generator GT checks whether $E'_a = f_3(\text{DHKey}, N'_a, N_b, r_b, \text{IOcapA}, A, B)$ or (and) $E'_b = f_3(\text{DHKey}, N'_b, N_a, r_a, \text{IOcapB}, B, A)$. If all are correct, the forged MAC generator GT sets $ac_b = \text{true}$ and $ac_a = \text{true}$; else it sets at least one of ac_b and ac_a is false.

4. In Π_1 's Phase 4, the forged MAC generator GT acts as the Bluetooth device A and the Bluetooth device B.

In the view of the active adversary \mathcal{A}_1 , the forged MAC generator GT constructs a perfect simulation of the run of $\Pi_1^{A,B}$ and $\Pi_1^{B,A}$. When $ac_a = ac_b = \text{true}$, the forged MAC generator GT obtains at least one new MAC pair without using $f_3(\text{DHKey}, \cdot)$, i.e., $(\{N'_a, N_b, r_b, \text{IOcapA}, A, B\}, E'_a)$ or $(\{N'_b, N_a, r_a, \text{IOcapB}, B, A\}, E'_b)$. Because $f_3(\text{DHKey}, \cdot)$ is a MAC function, δ_4 is a negligible function due to Definition 5.

We know that the event E_3 needs that the message(s) of $\Pi_1^{A,B}$ and $\Pi_1^{B,A}$ must be modified by the active adversary \mathcal{A}_1 and at the same time $\Pi_1^{A,B}$ and $\Pi_1^{B,A}$ still have $ac_a = ac_b = \text{true}$ after Π_1 's Phase 3. Nevertheless, \mathcal{A}_1 in the event E_{31} needs to change either PK_a or PK_b or both in the corresponding $\Pi_1^{B,A}$ and $\Pi_1^{A,B}$ to satisfy the comparison procedure of Π_1 's Phase 2 and \mathcal{A}_1 in the event E_{32} changes the message(s) of $\Pi_1^{A,B}$ and $\Pi_1^{B,A}$ except PK_a and PK_b . Hence, we have

$$\text{Prob}(E_3) \leq \text{Prob}(E_{31}) + \text{Prob}(E_{32}) = 2^{-1} + \delta_3(n) + \delta_4(n). \quad (14)$$

It implies that $\text{Prob}(E_3)$ is negligible in the security parameters l and n . \square

Lemma 3. Assume that $f_1()$ in Π_2 is the collision-resistant function as in Definition 6. Assume that $f_3()$ in Π_2 is the MAC function as in Definition 5. Let \mathcal{A}_1 be the active adversary of Π_2 as described in Section 3.3. Assume that \mathcal{A}_1 is not allowed to modify Π_2 's messages $\{A, r_a, C_a\}$ and $\{B, r_b, C_b\}$ transmitted over the OOB channels. Let E_4 denote the event that the active adversary \mathcal{A}_1 submits his $\Pi_2^{A,B}$ and $\Pi_2^{B,A}$ such that $ac_a = ac_b = \text{true}$. Then, $\text{Prob}(E_4)$ is negligible.

Proof 5. The active adversary \mathcal{A}_1 should fabricate at least one message to his submitting $\Pi_2^{A,B}$ and $\Pi_2^{B,A}$ and the decisions of both $\Pi_2^{A,B}$ and $\Pi_2^{B,A}$ still satisfy $ac_a = ac_b = \text{true}$. Let us analyze the behaviour of the active adversary \mathcal{A}_1 . For $\Pi_2^{A,B}$ and $\Pi_2^{B,A}$, \mathcal{A}_1 may modify the message(s) transmitted in Π_2 's Phase 1 or Phase 2. Note that if the active adversary \mathcal{A}_1 wants to modify Π_2 's messages in both Phase 1 and Phase 2, he should firstly pass the authentication procedure in Π_2 's Phase 2. We therefore do not consider this case. Now, we need to consider two cases as follows.

Case 1. In Π_2 's Phase 1, the active adversary \mathcal{A}_1 modifies $\Pi_2^{A,B}$'s PK_a or (and) $\Pi_2^{B,A}$'s PK_b . Let the event E_{41} denote that the active adversary \mathcal{A}_1 only uses the Send oracle to transmit his $PK'_a = (PK'ax, PK'ay)$ instead of PK_a to $\Pi_2^{B,A}$ and $\Pi_2^{B,A}$'s ac_b is not false, where $PK'_a \neq PK_a$. We know that $\text{Prob}(\mathcal{A}_1 \text{ modifies message(s) of } \Pi_2^{A,B} \text{ or (and) } \Pi_2^{B,A} \text{ in Phase 1}) \leq \text{Prob}(E_{41})$ according to the design of Π_2 . In Step 5 of Π_2 's Phase 2, the Bluetooth device B receives r_a and C_a from the Bluetooth device A and sets $ac_b = \text{false}$ and aborts the protocol execution if $C_a \neq f_1(PK'ax, PK'ax, r_a, 0)$. It means that, if the event E_{41} holds, we obtain two different inputs $\{PK'ax, PK'ax, r_a, 0\}$ and $\{PKax, PKax, r_a, 0\}$ for the collision-resistant function f_1 such that $C_a = f_1(PKax, PKax, r_a, 0) = f_1(PK'ax, PK'ax, r_a, 0)$. Due to Definition 6, we have $\text{Prob}(E_{41}) = \delta_5(n)$, where $\delta_5(n)$ is a negligible function.

Case 2. For $\Pi_2^{A,B}$ or (and) $\Pi_2^{B,A}$, the active adversary \mathcal{A}_1 only modifies the message(s) in Π_2 's Phase 2 and Phase 3. Let E_{42} denote the event that the active adversary \mathcal{A}_1 sends $N'a \neq N_a$ or $N'b \neq N_b$ or both to the corresponding $\Pi_2^{B,A}$ and $\Pi_2^{A,B}$ and both ac_b and ac_a are true after Π_2 's Phase 3. Clearly, $\text{Prob}(\mathcal{A}_1 \text{ only modifies message(s) of } \Pi_2^{A,B} \text{ or (and) } \Pi_2^{B,A} \text{ in Phase 2 and Phase 3}) \leq \text{Prob}(E_{42})$. Let δ_6 be a function such that $\text{Prob}(E_{42}) = \delta_6(n)$. Using a similar trick in case 2 of Lemma 2, we reduce that δ_6 is a negligible function by using Definition 5.

To conclude the proof, we have

$$\begin{aligned} \text{Prob}(E_4) &\leq \text{Prob}(\mathcal{A}_1 \text{ modifies message(s) of } \Pi_2^{A,B} \text{ or (and) } \Pi_2^{B,A} \text{ in Phase 1}) + \text{Prob}(\mathcal{A}_1 \text{ only modifies} \\ &\text{message(s) of } \Pi_2^{A,B} \text{ or (and) } \Pi_2^{B,A} \text{ in Phase 2 and Phase 3}) \leq \text{Prob}(E_{41}) + \text{Prob}(E_{42}) = \delta_5(n) + \delta_6(n), \end{aligned} \quad (15)$$

where both $\delta_5(n)$ and $\delta_6(n)$ are negligible functions. This completes the proof. \square

Combining Theorem 1 with Lemma 1, Lemma 2, and Lemma 3, we can directly obtain the following results of Π_1 and Π_2 under our security model.

Theorem 3. Assume that $P256()$ and $P192()$ in Π satisfy the DDH assumption as in Definition 3 and $f2()$ and $f3()$ in Π are the Diffie-Hellman keyed pseudorandom function as in Definition 4. We have

- (1) Π_1 is secure for authenticated link key, if $f1()$ is the computationally-binding non-malleable commitment scheme, $g()$ is a computational 2-universal hash function, and $f3()$ is also a MAC function as in Definition 5.
- (2) Π_2 is secure for authenticated link key, if $f1()$ is the collision-resistant function as in Definition 6 and $f3()$ is also a MAC function as in Definition 5.

5. Comparison Analysis of Related Protocols

In this section, we analyze the security properties and the efficiency of the NC protocol and the OOB protocol in Bluetooth standard v5.0 by contrast to three related SSP protocols [12,13,23].

5.1. Security Properties Comparison

The improved NC protocol proposed by Yeh et al. [23] uses PIN number instead of confirming the displayed numbers to prevent MITM attacks. The improved NC protocol proposed by Gajbhiye et al. [12] uses the signature mechanism to confirm the pairing devices. The SSP protocol with delayed-encrypted IO (SSP-DEIO) proposed by Gajbhiye et al. [13] delays the exchange of encrypted IO capability until Phase 2 to overcome from the problem of capturing the IO capability of the pairing devices. Table 4 shows the security comparison among our results and above three SSP protocols. Here, 'Yes'/'No' represents that the protocol can/cannot defeat the corresponding attack. As shown in Table 4, our NC and OOB protocols show better security properties against passive eavesdropping and MITM attacks. More important, these properties have been strictly proved by the formal security model.

Table 4. Security properties comparison among related protocols.

Protocol	Passive Eavesdropping Attack	MITM Attack
Our NC protocol	Yes	Yes
Our OOB protocol	Yes	Yes
Yeh et al. [23]	No	Yes
Gajbhiye et al. [12]	Yes	Yes
Gajbhiye et al. [13]	Yes	Yes(except for the JW model)

5.2. Performance Comparison

We compare and implement all the SSP protocols under the same experiment platform. We know that the NC protocol requires the user to carry out a short numeric comparison and the OOB protocol

needs the user to monitor the OOB procedure. Due to the uncertainty of human factors, we omit the performance of these user-device interactions in all the SSP protocols.

5.2.1. Computation Cost

Experiment Platform

(1) Experiment environment: The basic cryptographic algorithms are executed in Windows 10 64 bits, Intel(R) Core(TM) i7-8700 CPU @ 3.20 GHz 3.19GHz, 8.00 GB RAM.

(2) Cryptographic tools: Python 3.6.6 cryptography toolkit PyCryptodemo.

Parameters and Algorithms

Several parameters are involved in the different SSP protocols. Based on the security assumption of our formal security model in Section 4 and Bluetooth standard v5.0, these parameters and their corresponding algorithms are shown in Table 5.

Table 5. Experimental parameters and algorithms.

Parameter	Cryptographic Algorithm	Description
PKx and SKx	ECDH_Key	ECDH key-pair generation
DHKey	P256() ¹	DHKey computation
Nx	Rand	128-bit pseudo-random number generator
Cx	HMAC-SHA256	SHA-256-based MAC
Vx	SHA-256	Cryptographic hash algorithm
Ex	HMAC-SHA256	SHA-256-based MAC
LK	HMAC-SHA256	SHA-256-based MAC
Signature ²	HMAC-SHA256	SHA-256-based MAC
XOR value ³	XOR	Exclusive or
Encrypted information ⁴	AES-256_Enc	Advanced encryption standard (AES) encryption algorithm with 256-bit key
IO capability and other information ⁴	AES-256_Dec	AES decryption algorithm with 256-bit key

¹ P192() and P256() are optional and we take P256() for an example here. ² Signature is only used in the enhanced NC protocol proposed by Gajbhiye et al. [12]. ³ XOR is only used in the improved NC protocol proposed by Yeh et al. [23]. ⁴ Encrypted information/IO capability and other information are only used in the SSP protocol with delayed-encrypted IO (SSP-DEIO) proposed by Gajbhiye et al. [13].

Table 6 shows the total computation operations of five SSP protocols. Figure 1 depicts the differences of the computation time cost between these SSP protocols.

Table 6. Computation cost of each protocol.

Protocol	Computation Cost
Our NC protocol	2ECDH_Key + 2P256() + 2Rand + 8HMAC-SHA256 + 2SHA-256
Our OOB protocol	2ECDH_Key + 2P256() + 2Rand + 10HMAC-SHA256
Yeh et al. [23]	2ECDH_Key + 2P256() + 4XOR + 6HMAC-SHA256
Gajbhiye et al. [12]	4ECDH_Key + 4P256() + 2Rand + 6HMAC-SHA256
Gajbhiye et al. [13]	4ECDH_Key + 4P256() + 2Rand + 8HMAC-SHA256 + 2SHA-256 + 2AES-256_Enc + 2AES-256_Dec

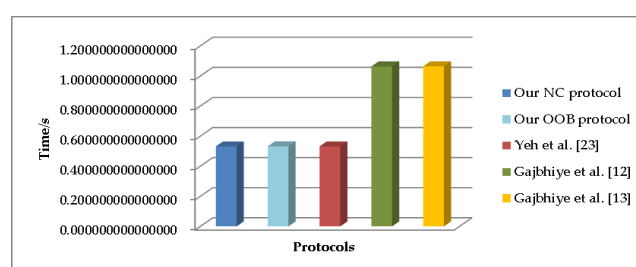


Figure 1. Comparison of computation time cost.

5.2.2. Communication and Storage Cost

To evaluate the communication cost, we consider the transmitted data in each protocol execution. Figure 2 shows the communication cost of all the SSP protocols. In the aspect of the storage cost, we only calculate the long-standing value existed in all phases of the SSP protocols. Figure 3 compares the storage cost of all the SSP protocols.

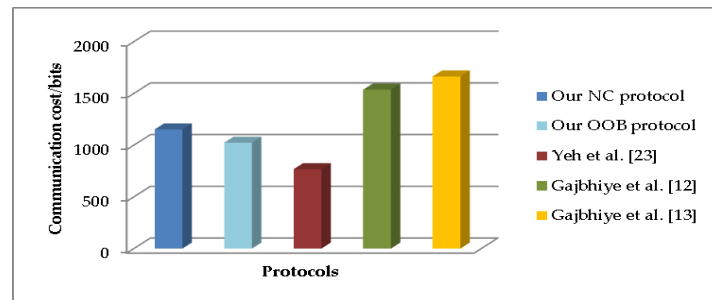


Figure 2. Comparison of communication cost.

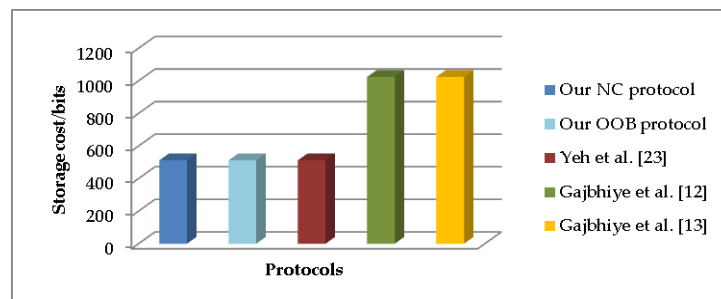


Figure 3. Comparison of storage cost.

6. Security Applications in Home Automation and Entertainment

Bluetooth has been widely used by the HAE systems due to its flexibility of networking and diversity of connection. Figure 4 shows a typical Bluetooth-based HAE system. On the one hand, users via Bluetooth enable automatic control of multiple household items, including lights, washing machines, thermostats, smoke detectors, cameras, door bells, locks, and more. On the other hand, Bluetooth connects various home entertainment devices such as TVs, media players, gaming consoles, and virtual reality wearables, and makes smart entertainment a reality. However, the HAE systems are susceptible to all kinds of attacks such as traffic eavesdropping, MITM attacks, and session hijacking. Bluetooth specially maintains the SSP solution to protect its service. Clearly, the SSP solution is possible to prevent the attacks existed in the HAE systems, when these systems are built on the Bluetooth technology.

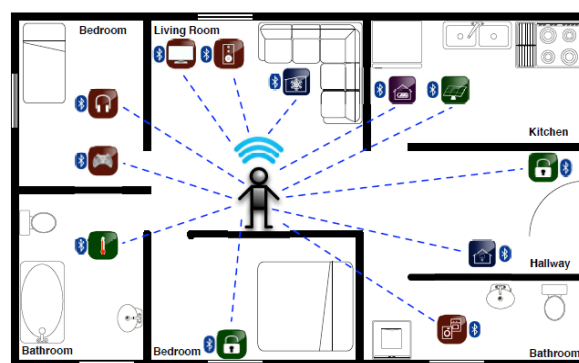


Figure 4. Bluetooth-based home automation and entertainment (HAE) system.

6.1. Integration Frame

To secure the Bluetooth-based HAE systems, the SSP solution must perfectly be integrated with the HAE systems for the strong cryptographic security. We therefore propose an SSP frame for the HAE scenarios. The SSP frame suggests how to correctly apply SSP in the HAE systems. The SSP frame is presented as follows.

Principle 1. *SSP is the basic security component when networking the HAE systems.*

Before sensitive communication, the security link should be established among the home appliances in the HAE systems. This security link requires using the crucial pairing and bonding protocol in the SSP solution. As shown in Figure 5, if two appliances in the HAE system need to establish a security link in actual system implementation, they need select SSP as the secure pairing solution. In more detail, both appliances generate their own public-private key pairs and exchange necessary messages. Then, users can choose appropriate association model of SSP to pair their appliances based on their IO capabilities and our security results in Section 4. For example, if the OOB data are available on each pairing appliance and a strong security for authenticated link key is needed, users could select the OOB protocol to pair their home appliances. Users then use Phase 3 in Figure 5 to confirm the integrity of appliances. Here, to secure subsequent services, the link key is perhaps established by the SSP protocol. The link key would be used as a master key to complete sequent authentication and encryption.

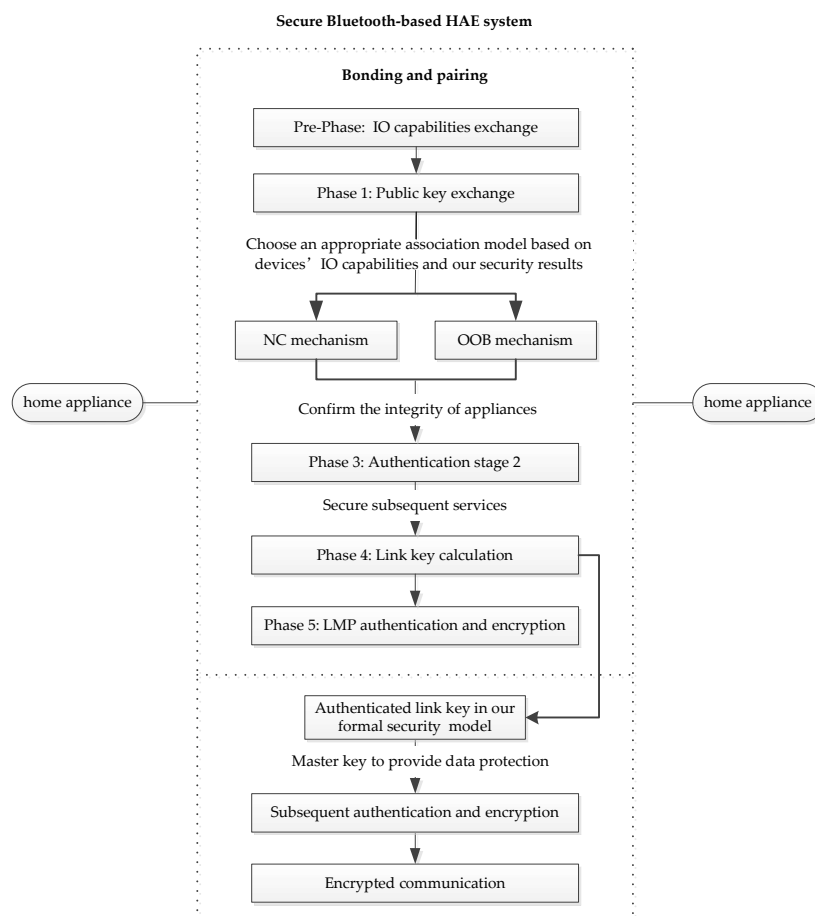


Figure 5. A secure Bluetooth-based HAE system using secure simple pairing (SSP).

Principle 2. *SSP can be used to prevent unauthorized users in the HAE systems, when the unauthorized user is a threat.*

The HAE systems always demand that all home appliances are authorized. It implies that the HAE systems must prevent MITM attacks from malicious appliances. Under our formal evaluation, the NC protocol and the OOB protocol in SSP prevent MITM attacks. More important, to defeat MITM attacks, users only need to perform the simple operations such as comparing two numbers and monitoring the OOB procedure. Based on Theorem 3, the probability that adversary succeeds in carrying out a MITM attack should be negligible.

Principle 3. *SSP can be used to provide the data protection for the HAE systems.*

Many home appliances in the HAE systems process a large amount of private sensitive data. The link keys generated by the SSP protocols are advised to encrypt and authenticate those data. This suggestion is supported by our formal proof of the SSP protocol. Specifically, the link key generated in Phase 4 of the SSP protocol can be used as a master key for sequent authentication and encryption. Owing to Theorem 3, the NC and OOB protocols have been formally proved to satisfy the authenticated link key security. Hence, the secret key can be securely derived by the link key. If the private sensitive data are encrypted by the secret key, the adversary is uneasy to obtain the private sensitive data in the HAE system.

6.2. Case Research

6.2.1. Smart Lock

The smart lock system is implemented in houses, lockers, and boxes for postal applications, etc. Users' mobile devices connect with the physical locks via Bluetooth wireless communication. This system helps people to lock and unlock the door automatically, particularly the disabled and elderly people. People can not only control the state of lock but also monitor the malicious intruder using his automation system. Since the smart lock system is an important line of family security, it must ensure that only authorized user has access to the door. The smart lock need adopt Principle 1 and Principle 2. Principle 1 assures users that their mobile devices are able to setup the security links with the target locks. Principle 2 prevents the malicious intruder, who may exploit the appliances in the system. Figure 6 shows the implementation design of smart lock under the OOB protocol. The authorized users pair and bond a smartphone with the smart lock by the aid of the OOB protocol. When a user wants to unlock the smart lock, he should start the smart lock app in his smartphone and start the NFC function to transfer NFC information to the smart lock. Smart lock reads the information and verifies to determine if open the door. Here, NFC plays a vital role in the smart lock system.

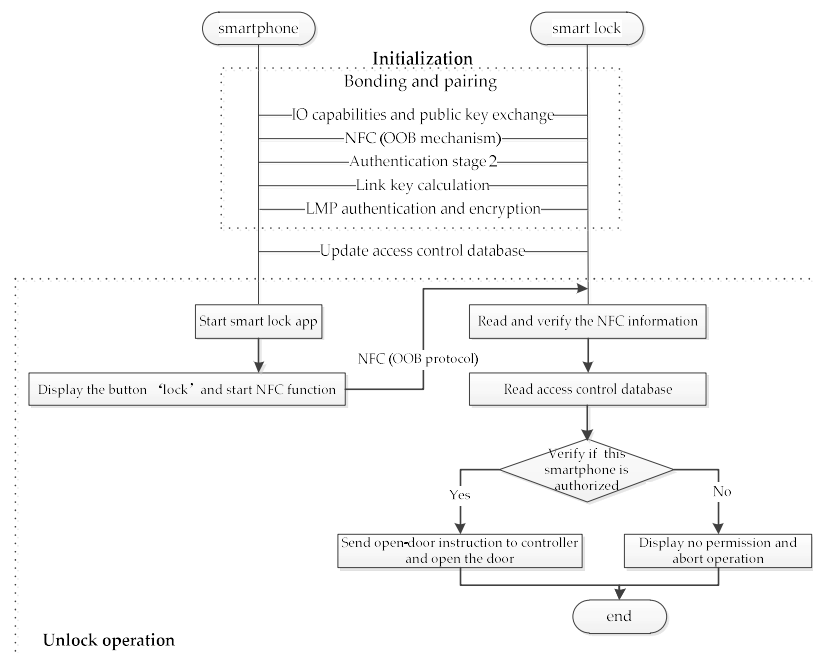


Figure 6. Implementation design of a smart lock system using near field communication (NFC).

6.2.2. Sport and Fitness Wearables

Figure 7 shows four sport and fitness wearables, namely bioharness, smart training shoes, heated jacket, and sport monitor. The personal sensitive data are usually stored on wearables. The data protection is important, because the data on wearables are apt to be tracked and eavesdropped by an adversary. Fortunately, users easily pair their sport and fitness wearables with smartphones by easy SSP operations. Hence, the sport and fitness wearables need satisfy Principle 1 and Principle 3. As shown in Figure 8, the user's smartphone is paired with his wearables in order to analyze and process the sport and fitness data in smartphone. The user can choose the NC protocol to establish a link key for the transmission of confidential data.



Figure 7. Four sport and fitness wearables: (a) Bioharness; (b) Smart training shoes; (c) Heated jacket; (d) Sport monitor.

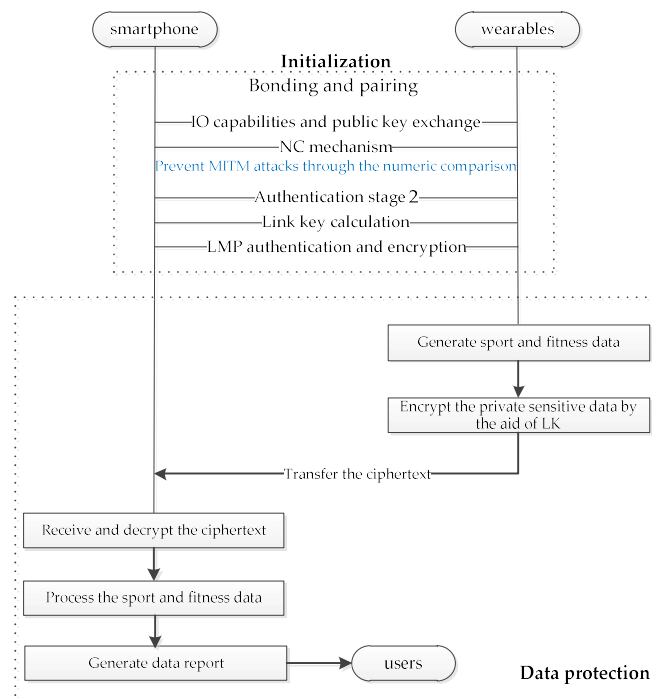


Figure 8. Smart wearables implementation using NC protocol.

6.2.3. Smart Nursing

As shown in Figure 9, the home appliances in the smart nursing system contain body sensors that record health data to report physical condition such as blood pressure and pulse rate, temperature and humidity detectors that assist to maintain a livable home environment, and intelligent emergency and disaster alarms that help people send rescue information in time, etc. We can see that the smart nursing system involves the transmission of private data and the access of personal authorized home appliances. Hence, this system needs to prevent malicious users from tampering commands and provide data protection. It means that Principle 1, Principle 2, and Principle 3 all fit the smart nursing system. As shown in Figure 10, various appliances choose the NC or OOB protocol to pair and bond with the center controller according to their individual needs.

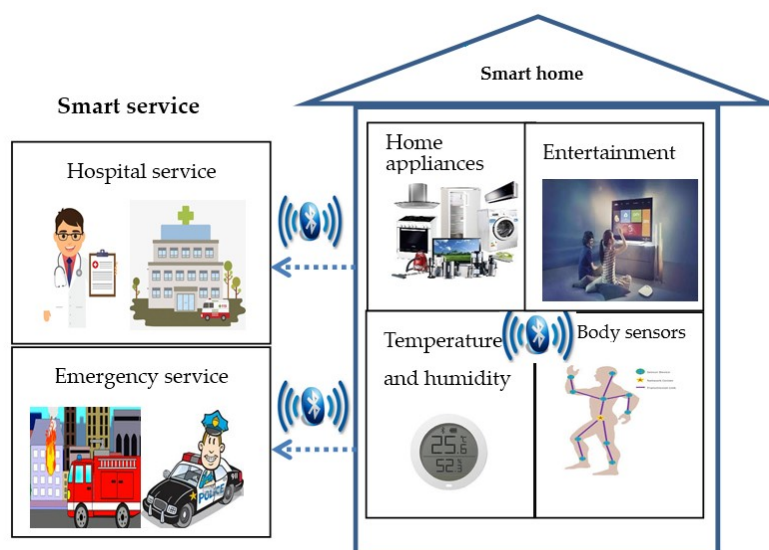


Figure 9. A smart nursing system.

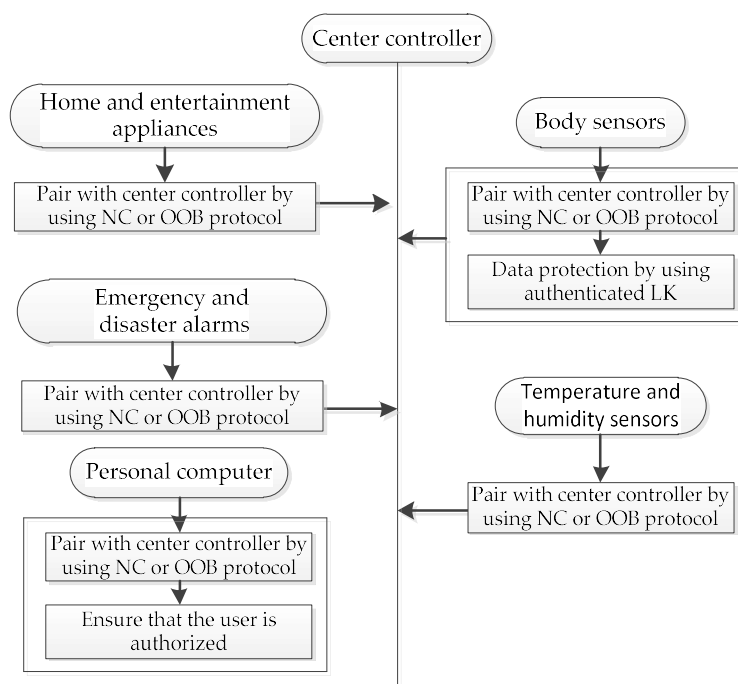


Figure 10. Implementation design of a Bluetooth-based smart nursing system.

7. Conclusions

We propose a formal security model for the SSP protocols. The NC protocol and the OOB protocol are evaluated by our security model. Our results show that both the NC protocol and the OOB protocol are secure if their cryptographic tools meet the cryptographic assumptions, i.e., the DDH assumption, the Diffie-Hellman keyed pseudorandom function, the MAC function, and the collision-resistant function. Our research confirms that the SSP solution ought to be implemented in the HAE applications. The NC protocol and the OOB protocol promise more security guarantee under the HAE environments because the security of its authenticated link key is formally analyzed under our security model.

Although the PE protocol is not analyzed, we claim that the results in Theorem 2 and Lemma 1 are also applicable to the PE protocol. However, we do not know the security result when the PE protocol plays with the active adversary. One difficulty is to formalize the passkey in the PE protocol, because the passkey is not generated by the security algorithm and is entered by the user. Formal analysis of the PE protocol is our future work.

Author Contributions: Conceptualization, D.-Z.S.; methodology, D.-Z.S.; validation, D.-Z.S.; formal analysis, D.-Z.S.; investigation, L.S.; writing—original draft preparation, D.-Z.S. and L.S.; writing—review and editing, D.-Z.S. and L.S.; supervision, D.-Z.S.; funding acquisition, D.-Z.S.

Funding: This research was funded by the National Science Foundation of China, Grant No. 61872264.

Conflicts of Interest: The authors declare no conflict of interest.

References

1. Bluetooth. Available online: <https://en.wikipedia.org/wiki/Bluetooth> (accessed on 24 December 2018).
2. Specification of the Bluetooth System, Supplement to the Bluetooth Core Specification, CSSv7, Bluetooth SIG Proprietary. Available online: <https://www.bluetooth.com/specifications/adopted-specifications> (accessed on 24 December 2018).
3. Specification of the Bluetooth System, Covered Core Package Version: 5.0, Master Table of Contents & Compliance Requirements, Bluetooth SIG Proprietary. Available online: <https://www.bluetooth.com/specifications/adopted-specifications> (accessed on 24 December 2018).

4. Lindell, A.Y. Attacks on the pairing protocol of Bluetooth v2.1. In Proceedings of the Black Hat USA 2008, Las Vegas, NV, USA, 2–7 August 2008; pp. 1–10.
5. Haataja, K.; Toivanen, P. Practical man-in-the-middle attacks against Bluetooth secure simple pairing. In Proceedings of the 2008 4th International Conference on Wireless Communications, Dalian, China, 12–14 October 2008; pp. 1–5.
6. Haataja, K.; Toivanen, P. Two practical man-in-the-middle attacks on Bluetooth secure simple pairing and countermeasures. *IEEE Trans. Wirel. Commun.* **2010**, *9*, 384–392. [[CrossRef](#)]
7. Padgette, J.; Scarfone, K.; Chen, L. *Guide to Bluetooth Security: Recommendations of the National Institute of Standards and Technology*; CreateSpace Independent Publishing Platform: Scotts Valley, CA, USA, 2012; ISBN 147816896X 9781478168966.
8. Sandhya, S.; Devi, K.A.S. Analysis of Bluetooth threats and v4.0 security features. In Proceedings of the 2012 International Conference on Computing, Communication and Applications, Dindigul, Tamilnadu, India, 22–24 February 2012.
9. Phan, C.W.; Mingard, P. Analyzing the secure simple pairing in Bluetooth v4.0. *Wirel. Pers. Commun.* **2012**, *64*, 719–737. [[CrossRef](#)]
10. Barnickel, J.; Wang, J.; Meyer, U. Implementing an attack on Bluetooth 2.1+ secure simple pairing in passkey entry mode. In Proceedings of the 2012 IEEE 11th International Conference on Trust, Security and Privacy in Computing and Communications, Liverpool, UK, 25–27 June 2012; pp. 17–24.
11. Albahar, M.A.; Haataja, K.; Toivanen, P. Towards enhancing just works model in Bluetooth pairing. *Int. J. Inf. Technol. Secur.* **2016**, *8*, 67–82.
12. Gajbhiye, S.; Sharma, M.; Karmkar, S. Design, implementation and security analysis of Bluetooth pairing protocol in NS2. In Proceedings of the 2016 International Conference on Advances in Computing, Communications and Informatics (ICACCI), Jaipur, India, 21–24 September 2016; pp. 1711–1717.
13. Gajbhiye, S.; Karmakar, S.; Sharma, M. Two-party secure connection in Bluetooth-enabled devices. *Inf. Secur. J.* **2018**, *27*, 42–56. [[CrossRef](#)]
14. Sun, D.Z.; Mu, Y.; Susilo, W. Man-in-the-middle attacks on secure simple pairing in Bluetooth standard V5.0 and its countermeasure. *Pers. Ubiquit. Comput.* **2017**, *22*, 55–67. [[CrossRef](#)]
15. Lonzetta, A.M.; Cope, P.; Campbell, J. Security vulnerabilities in Bluetooth technology as used in IoT. *J. Sens. Actuator Netw.* **2018**, *7*, 28. [[CrossRef](#)]
16. Bellare, M.; Rogaway, P. Entity authentication and key distribution. In Proceedings of the 13th Annual International Cryptology Conference (CRYPTO' 93), Santa Barbara, CA, USA, 22–26 August 1993; pp. 232–249.
17. Bellare, M.; Rogaway, P. Provably secure session key distribution: The three party case. In Proceedings of the 27th Annual ACM Symposium on Theory of Computing (STOC' 95), Las Vegas, NV, USA, 29 May–1 June 1995; pp. 57–66.
18. Bellare, M.; Canetti, R.; Krawczyk, H. A modular approach to the design and analysis of authentication and key exchange protocols. In Proceedings of the 30th Annual ACM Symposium on Theory of Computing (STOC' 98), Dallas, TX, USA, 24–26 May 1998; pp. 419–428.
19. Bellare, M.; Pointcheval, D.; Rogaway, P. Authenticated key exchange secure against dictionary attacks. In Proceedings of the 19th International Conference on Theory and Application of Cryptographic Techniques (EUROCRYPT 2000), Bruges, Belgium, 14–18 May 2000; pp. 139–155.
20. Laur, S.; Nyberg, K. Efficient mutual data authentication using manually authenticated strings. In Proceedings of the 5th International Conference on Cryptology and Network Security (CANS' 06), Suzhou, China, 8–10 December 2006; pp. 90–107.
21. Sun, D.Z.; Li, X.H. Vulnerability and enhancement on Bluetooth pairing and link key generation scheme for security modes 2 and 3. In Proceedings of the Information and Communications Security: 18th International Conference (ICICS 2016), Singapore, 29 November–2 December 2016; pp. 403–417.
22. Chang, R.; Shmatikov, V. Formal analysis of authentication in Bluetooth device pairing. In Proceedings of the LICS/ICALP Workshop on Foundations of Computer Security and Automated Reasoning for Security Protocol Analysis (FCS-ARSPA' 07), Wroclaw, Poland, 8 July 2007; pp. 45–62.
23. Yeh, T.; Peng, J.; Wang, S.; Hsu, J. Securing Bluetooth communications. *IJNS* **2012**, *14*, 229–235. [[CrossRef](#)]

24. Benin, A.; Toledo, S.; Tromer, E. Secure association for the internet of things. In Proceedings of the 2015 International Workshop on Secure Internet of Things (SIoT 2015), Vienna, Austria, 21–25 September 2015; pp. 25–34.
25. Lindell, A.Y. Comparison-based key exchange and the security of the numeric comparison mode in Bluetooth v2.1. In Proceedings of the Cryptographers' Track at the RSA Conference 2009 (CT-RSA' 09), San Francisco, CA, USA, 20–24 April 2009; pp. 66–83.
26. Bourouis, A.; Feham, M.; Bouchachia, A. Ubiquitous mobile health monitoring system for elderly (UMHMSE). *IJCSIT* **2011**, *3*, 74–82. [[CrossRef](#)]
27. Wei, J. How wearables intersect with the cloud and the internet of things: Considerations for the developers of wearables. *IEEE Consum. Electron. Mag.* **2014**, *3*, 53–56. [[CrossRef](#)]
28. Decuir, J. Introducing Bluetooth smart: Part II: Applications and updates. *IEEE Consum. Electron. Mag.* **2014**, *3*, 25–29. [[CrossRef](#)]
29. Varsamou, M.; Antonakopoulos, T. A Bluetooth smart analyzer in iBeacon networks. In Proceedings of the 2014 IEEE Fourth International Conference on Consumer Electronics Berlin (ICCE-Berlin), Berlin, Germany, 7–10 September 2014; pp. 288–292.
30. Ho, G.; Leung, D.; Mishra, P. Smart locks: Lessons for securing commodity internet of things devices. In Proceedings of the 11th ACM on Asia Conference on Computer and Communications Security (ASIA CCS' 16), Xi'an, China, 30 May–3 June 2016; pp. 461–472.
31. Levy, A.A.; Hong, J.; Riliskis, L. Beetle: Flexible communication for Bluetooth low energy. In Proceedings of the 14th Annual International Conference on Mobile Systems, Applications, and Services (MobiSys' 16), Singapore, 26–30 July 2016; pp. 111–122.
32. Prakash, Y.W.; Biradar, V.; Vincent, S. Smart Bluetooth low energy security system. In Proceedings of the 2017 International Conference on Wireless Communications, Signal Processing and Networking (WiSPNET), Chennai, India, 22–24 March 2017; pp. 2141–2146.
33. Prada-Delgado, M.A.; Vazquez-Reyes, A.; Baturone, I. Physical unclonable keys for smart lock systems using Bluetooth low energy. In Proceedings of the 42nd Annual Conference of the IEEE-Industrial-Electronics-Society (IECON), Florence, Italy, 24–27 October 2016; pp. 4808–4813.
34. Goyal, S.; Desai, P.; Swaminathan, V. Multi-level security embedded with surveillance system. *IEEE Sens. J.* **2017**, *17*, 7497–7501. [[CrossRef](#)]
35. Ben Arbia, D.; Alam, M.M.; Kadri, A. Enhanced IoT-based end-to-end emergency and disaster relief system. *J. Sens. Actuator Netw.* **2017**, *6*, 19. [[CrossRef](#)]
36. Nath, P.; Pati, U.C. Low-cost android app based voice operated room automation system. In Proceedings of the 2018 3rd International Conference for Convergence in Technology (I2CT), Pune, Maharashtra, India, 6–8 April 2018; pp. 1–4.
37. Talasila, M.; Curtmola, R.; Borcea, C. Collaborative Bluetooth-based location authentication on smart phones. *Pervasive Mob. Comput.* **2015**, *17*, 43–62. [[CrossRef](#)]
38. Zhuang, Y.; Yang, J.; Li, Y. Smartphone-based indoor localization with Bluetooth low energy beacons. *Sensors* **2016**, *16*, 596. [[CrossRef](#)] [[PubMed](#)]
39. Yohan, A.; Lo, N.W.; Winata, D. An indoor positioning-based mobile payment system using Bluetooth low energy technology. *Sensors* **2018**, *18*, 974. [[CrossRef](#)] [[PubMed](#)]
40. Katz, J.; Lindell, Y. *Introduction to Modern Cryptography: Principles and Protocols*, 2nd ed.; Chapman & Hall/CRC: Ballyclare, UK, 2014.

