

Supplementary Figures



Figure S1. Summary of the most significantly enriched Gene Ontology cellular component terms associated with differentially expressed genes. Only the terms achieving a FDR-corrected enrichment p-value lower than 1×10^{-8} in at least one pairwise comparison, paired with a difference between the observed and expected number of observed DEGs associated with each GO term > 5 , are shown. The complete list of all significantly enriched Gene Ontology cellular component terms is reported in **Table S4**. DG: digestive gland; MUS: adductor muscle; GON: gonads; GIL: gills; MAN: mantle.

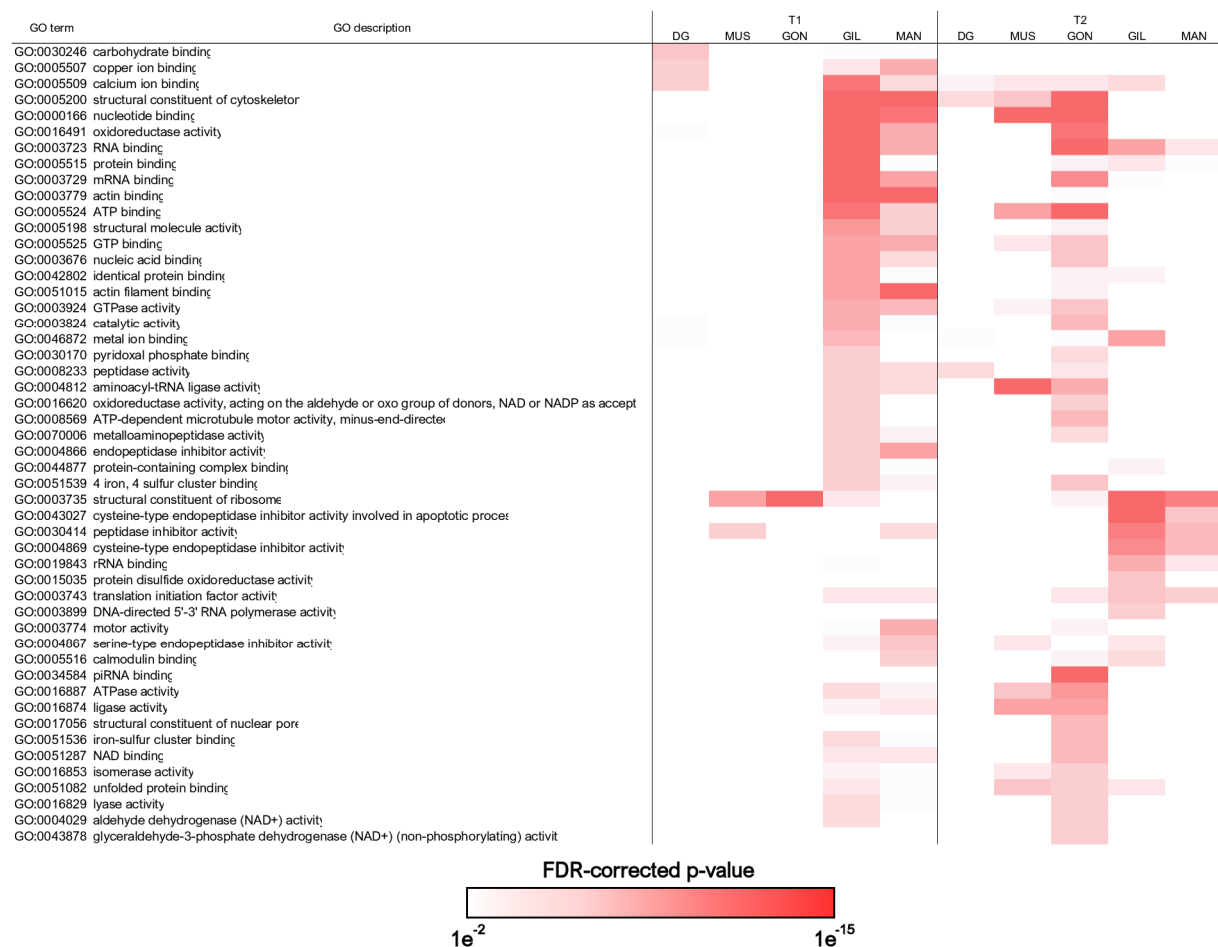


Figure S2. Summary of the most significantly enriched Gene Ontology molecular function terms associated with differentially expressed genes. Only the terms achieving a FDR-corrected enrichment p-value lower than 1×10^{-8} in at least one pairwise comparison, paired with a difference between the observed and expected number of observed DEGs associated with each GO term > 5 , are shown. The complete list of all significantly enriched Gene Ontology molecular function terms is reported in **Table S5**. DG: digestive gland; MUS: adductor muscle; GON: gonads; GIL: gills; MAN: mantle.