

Figure S1. Central Queensland Coast (CQC) phylogeny based on pooled data created with iTOL, v5 [88]. Coloured bars represent species collected within the respective Subregions. Major orders are named.

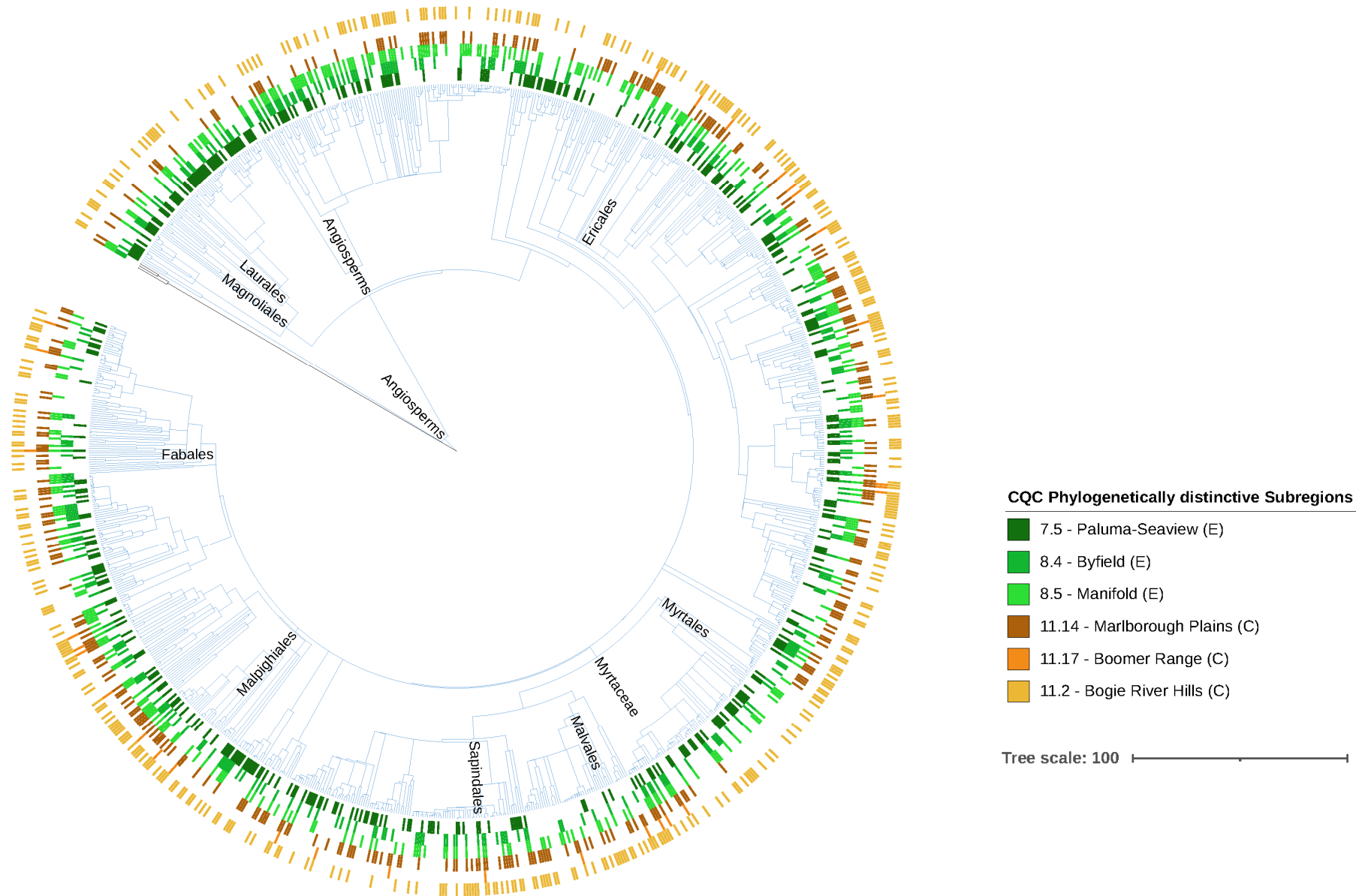


Figure S2. Central Queensland Coast (CQC) phylogeny based on pooled data created with iTOL, v5 [88] shows distinctive subregions. Green coloured bars represent Subregion communities that were phylogenetically even. Orange bars represent Subregion communities that were phylogenetically clustered. Different shades represent individual subregions. Major orders are named.