

Table S1. Spider species composition and habitat distribution in the Velykoburlutskyi Steppe Regional Landscape Park (2003, 2008, 2012–2019)

Taxon	Habitats										
	Ugb	UgS	GB	GS	AS	OUgS	FE	BF	FM	WB	HD
Fam. AGELENIDAE 3											
<i>Agelena labyrinthica</i> (Clerck, 1757)	1	1	.	.	.	1	1	1	.	.	.
<i>Tegenaria domestica</i> (Clerck, 1757)	1
<i>Tegenaria lapicidinarum</i> Spassky, 1934	1	1	1	1	.	.	1
Fam. ARANEIDAE 16											
<i>Agalenatea redii</i> (Scopoli, 1763)	1	1	1	1	1	1	1	.	1	.	.
<i>Araneus angulatus</i> Clerck, 1757	1	.	.	.
<i>Araneus diadematus</i> Clerck, 1757	1	1	1	.	1	1
<i>Araneus quadratus</i> Clerck, 1757	1	1	.	1	1	.
<i>Araniella cucurbitina</i> (Clerck, 1757)	1
<i>Argiope bruennichi</i> (Scopoli, 1772)	1	.	1	.	1	1	1	.	1	1	.
<i>Cercidia prominens</i> (Westring, 1851)	1	1	.	.	1	1	1	1	1	.	.
<i>Cyclosa conica</i> (Pallas, 1772)	1	1	1	.	1	.
<i>Cyclosa oculata</i> (Walckenaer, 1802)	.	1	.	.	.	1
<i>Hypsosinga sanguinea</i> (C. L. Koch, 1844)	1	1	.	1	1	1	1	.	1	.	.
<i>Larinioides ixobolus</i> (Thorell, 1873)	1
<i>Larinioides patagiatus</i> (Clerck, 1757)	1	1	1
<i>Larinioides suspicax</i> (O. Pickard-Cambridge, 1876)	.	.	1	.	.	.	1	.	1	.	.
<i>Mangora acalypha</i> (Walckenaer, 1802)	1	1	1	1	1	1	1	1	1	1	1
<i>Neoscona adianta</i> (Walckenaer, 1802)	1	1	1	1	1	1	1	.	1	.	.
<i>Singa nitidula</i> C. L. Koch, 1844	1	.
Fam. ATYPIDAE 1											
<i>Atypus muralis</i> Bertkau, 1890	.	1
Fam. CHEIRACANTIIDAE 5											
<i>Cheiracanthium elegans</i> Thorell, 1875	1
<i>Cheiracanthium erraticum</i> (Walckenaer, 1802)	1	.	1	.	.
<i>Cheiracanthium pennyi</i> O. Pickard-Cambridge, 1873	1	1	.	1	1	1	1	.	1	.	.
<i>Cheiracanthium punctorium</i> (Villers, 1789)	1	1	.	1	1	.
<i>Cheiracanthium virescens</i> (Sundevall, 1833)	1	1	1	.	1	1	1
Fam. CLUBIONIDAE 6											
<i>Clubiona caerulescens</i> L. Koch, 1867	1	.	1	.

Taxon	Habitats										
	Ugb	UgS	GB	GS	AS	OUgS	FE	BF	FM	WB	HD
<i>Clubiona neglecta</i> O. Pickard-Cambridge, 1862	1	1	.	.
<i>Clubiona pallidula</i> (Clerck, 1757)	1	.	.	.
<i>Clubiona pseudoneglecta</i> Wunderlich, 1994	1	.	.	1	.	.
<i>Clubiona phragmitis</i> C. L. Koch, 1843	1	.
<i>Clubiona subtilis</i> L. Koch, 1867	1	.	.
Fam. DICTYNIDAE 5											
<i>!Argenna subnigra</i> (O. Pickard-Cambridge, 1861	1	1	.	.	.	1
<i>!!Altella hungarica</i> Loksa, 1981	.	1	.	1	1
<i>!!Argenna patula</i> (Simon, 1874)					1						
<i>Dictyna arundinacea</i> (Linnaeus, 1758)	1	1	1	1	1	1	1		1	1	.
<i>Dictyna uncinata</i> Thorell, 1856	1	1	1	1	1	.
Fam. DYSDERIDAE 1											
<i>Dysdera</i> sp. juv.	1
Fam. ERESIDAE 1											
<i>*!Eresus kollari</i> Rossi, 1846	.	.	1	.	1
Fam. GNAPHOSIDAE 33											
<i>Berlandina cinerea</i> (Menge, 1872)	.	1	.	1	.	1
<i>Callilepis nocturna</i> (Linnaeus, 1758)	1	1	.	1	.	1	1
<i>!Civizelotes pygmaeus</i> (Miller, 1943)	1	1	1	1	1	1
<i>Drassodes pubescens</i> (Thorell, 1856)	.	1	1	.	1	1	1	1	1	1	.
<i>Drassyllus lutetianus</i> (L. Koch, 1866)	1	1	1	1	1	1	1	.	1	.	.
<i>Drassyllus praeficus</i> (L. Koch, 1866)	1	1	1	1	1	1	1	.	1	.	.
<i>!Drassyllus vinealis</i> (Kulczyn'ski, 1897)	.	1	.	1	.	1	.	.	1	.	.
<i>!Gnaphosa dolosa</i> O. Herman, 1879	1	1		.	.	1	1
<i>Gnaphosa leporina</i> (L. Koch, 1866)	.	1	1
<i>!Gnaphosa licenti</i> Schenkel, 1953	.	1	1	1	1	1	1
<i>Gnaphosa lucifuga</i> (Walckenaer, 1802)	.	1	.	1	1	1
<i>*!Gnaphosa lugubris</i> (C. L. Koch, 1839)	1	1	1	1	1	1	1	.	1	.	.
<i>Haplodrassus dalmatensis</i> (L. Koch, 1866)	.	1	1	.	.	1
<i>Haplodrassus kulczynskii</i> Lohmander, 1942	1	1	1	1	1	1
<i>Haplodrassus signifer</i> (C. L. Koch, 1839)	1	1	1	1	.	1	1	1	1	1	.
<i>Haplodrassus silvestris</i> (Blackwall, 1833)	1	.	1	1	.	.	.

Taxon	Habitats										
	Ugb	UgS	GB	GS	AS	OUgS	FE	BF	FM	WB	HD
<i>Haplodrassus umbratilis</i> (L. Koch, 1866)	1	1	1	1	.	.
<i>Micaria dives</i> (Lucas, 1846)	.	1
<i>Micaria formicaria</i> (Sundevall, 1831)	1	1	1	1	1	1	1
<i>Micaria fulgens</i> (Walckenaer, 1802)	1	.	.	1	.	.	1	.	1	.	.
<i>Micaria pulicaria</i> (Sundevall, 1831)	1
! <i>Micaria rossica</i> Thorell, 1875	1
!! <i>Micaria silesiaca</i> L. Koch, 1875	1	.	.
<i>Poecilochroa variana</i> (C. L. Koch, 1839)	1	1	1	1	1	1	1	1	.	.	.
<i>Scotophaeus quadripunctatus</i> (L.)	1	.	.	.
<i>Trachyzelotes pedestris</i> (C. L. Koch, 1837)	.	1
<i>Zelotes azsheganovae</i> Esyunin, Efimik, 1992	1	.	.	.
<i>Zelotes electus</i> (C. L. Koch, 1839)	1	1	1	1	1	1	1	.	1	.	.
<i>Zelotes fuscus</i> (Thorell, 1875)	1	1	1	.	.	.
<i>Zelotes latreillei</i> (Simon, 1878)	1	.	.	1	1	.	1	1	1	.	.
<i>Zelotes longipes</i> (L. Koch, 1866)	1	1	1	1	1	1	1	.	1	.	.
! <i>Zelotes mundus</i> (Kulczyn'ski, 1897)	.	.	.	1
! <i>Zelotes segrex</i> (Simon, 1878)	1
Fam. HAHNIIDAE 2											
<i>Hahnia ononidum</i> Simon, 1875	1	.	.	.
<i>Hahnia nava</i> (Blackwall, 1841)	1	.	1	1	1	1
Fam. LINYPHIIDAE 34											
<i>Abacoproeces saltuum</i> (L. Koch, 1872)	1	1	.	.	.
!! <i>Agyneta fuscipalpa</i> (C. L. Koch, 1836)	.	.	1
<i>Agyneta rurestris</i> (C. L. Koch, 1836)	1	1	.	.	1	1	1	.	1	.	.
!! <i>Agyneta saaristoi</i> Tanasevitch, 2000	1	.	1	1	1	.	.
<i>Agyneta simplicatarsis</i> (Simon, 1884)	.	.	.	1	1
<i>Bathyphantes nigrinus</i> (Westring, 1851)	1	.
<i>Centromerus incilium</i> (L. Koch, 1881)	1	.	.	.	1
<i>Ceratinella brevis</i> (Wider, 1834)	1	1	1	.	.	.
<i>Dicymbium nigrum</i> (Blackwall, 1834)	1	.
<i>Diplocephalus picinus</i> (Blackwall, 1841)	1	.	.	.
<i>Diplostyla concolor</i> (Wider, 1834)	1	.	1	1	1	1	.
!! <i>Ipa terrens</i> (L. Koch, 1879)	.	.	.	1	1	1

Taxon	Habitats										
	Ugb	UgS	GB	GS	AS	OUgS	FE	BF	FM	WB	HD
<i>Kaestneria pullata</i> (O. Pickard-Cambridge, 1863)	1	.
<i>Linyphia hortensis</i> Sundevall, 1830	1	.	1	.
<i>Linyphia tenuipalpis</i> Simon, 1884	1	1	1	..	.	1	.
<i>Linyphia triangularis</i> (Clerck, 1757)	1	1	1	1	1	1	.
<i>Maso sundevalli</i> (Westring, 1851)	1	1	.	.	.
<i>Micrargus subaequalis</i> (Westring, 1851)	1
<i>Microlinyphia pusilla</i> (Sundevall, 1830)	1	1	1	.	1	1	.
<i>Microneta viaria</i> (Blackwall, 1841)	1	.	.	.
<i>Neriere clathrata</i> (Sundevall, 1830)	1	1	1	1	.
<i>Neriere radiata</i> (Walckenaer, 1841)	1	.	1	.
<i>Panamomops mengei</i> Simon, 1926	1	.	.	.
<i>Pocadicnemis pumila</i> (Blackwall, 1841)	1	.	.
<i>Porrhomma microphthalmum</i> (O. Pickard-Cambridge, 1871)	.	1	.	1	1
<i>Stemonyphantes lineatus</i> (Linnaeus, 1758)	1	1	1	1	1	1	1	.	1	.	.
<i>Styloctector romanus</i> (O. Pickard-Cambridge, 1872)	.	1	.	1	.	1
<i>Tenuiphantes flavipes</i> (Blackwall, 1854)	1	.	.	.
<i>Trematocephalus cristatus</i> (Wider, 1834)	1	.	.	.
<i>Trichoncus affinis</i> Kulczyn'ski 1894	1	1	1	1	1	1	1	1	.	.	.
<i>Trichopterna cito</i> (O. Pickard-Cambridge, 1872)	1
<i>Walckenaeria alticeps</i> (Denis, 1952)	1	.	.	.
<i>Walckenaeria atrotibialis</i> (O. Pickard-Cambridge, 1878)	1	1	1	.	.
<i>Walckenaeria furcillata</i> (Menge, 1869)	1	.	.	.
Fam. LIOCRANIDAE 5											
<i>Agroeca brunnea</i> (Blackwall, 1833)	1	1	.	.	.
<i>Agroeca cuprea</i> Menge, 1873	1	1	1	.	1	1	1	.	1	.	.
<i>Agroeca lusatica</i> (L. Koch, 1875)	1	1	1	.	1	.	1	.	1	.	.
<i>!!Agroeca makarovae</i> Esyunin, 2008	.	1
<i>Liocranoeca striata</i> (Kulczyński, 1882)	1	.	.	.
Fam. LYCOSIDAE 27											
<i>Alopecosa cuneata</i> (Clerck, 1757)	1	1	1	1	1	1	1	.	1	1	.

Taxon	Habitats										
	Ugb	UgS	GB	GS	AS	OUgS	FE	BF	FM	WB	HD
<i>Alopecosa cursor</i> (Hahn, 1831)		1	1	1	1	1	
<i>Alopecosa farinosa</i> (Herman, 1879)	1	1	1	1	1	1	1	.	1	.	.
<i>Alopecosa pulverulenta</i> (Clerck, 1757)	1	1	1	1	1	1	1	.	1	.	.
<i>Alopecosa schmidtii</i> (Hahn, 1835)	1	1	1	1	1	1	1
<i>Alopecosa solitaria</i> (Herman, 1879)	1	1	1	1	1	1	1
<i>Alopecosa taeniopus</i> (Kulczyński, 1895)	.	.	1	1	1	1	1
<i>Alopecosa trabalis</i> (Clerck, 1757)	1	1	.	.	.
<i>Arctosa leopardus</i> (Sundevall, 1833)	1	.	.
<i>Arctosa lutetiana</i> (Simon, 1876)	1	1	1	.	.	.
<i>Pardosa agrestis</i> (Westring, 1861)	.	.	1	1	.	.	1		1	.	.
<i>Pardosa alacris</i> (C. L. Koch, 1833)	1	1	1	.	.
<i>Pardosa fulvipes</i> (Collet, 1876)	1	.	1	.	.
<i>Pardosa lugubris</i> (Walckenaer, 1802)	1	1	1	1	1	1	.
<i>!!Pardosa maisa</i> Hippa & Mannila, 1982	1	1	.	.
<i>Pardosa paludicola</i> (Clerck, 1757)	1	.	.
<i>Pardosa palustris</i> (Linnaeus, 1758)	1	.	1	.	.
<i>Pardosa prativaga</i> (L. Koch, 1870)	1	.	1	1	.
<i>Pardosa pullata</i> (Clerck, 1757)	1	1	.
<i>Pirata piraticus</i> (Clerck, 1757)		1	.
<i>Pirata piscatorius</i> (Clerck, 1757)	1	.
<i>Piratula hygrophila</i> (Thorell, 1872)	1	1	1	.
<i>Piratula latitans</i> (Blackwall, 1841)	1	.	.
<i>Trochosa robusta</i> (Simon, 1876)	1	1	1	1	1	1	1
<i>Trochosa ruricola</i> (De Geer, 1778)	1		1	1	1	.	1	1.	1	1	.
<i>Trochosa terricola</i> Thorell, 1856	1	1	1	.	.	1	1	1	1	1	.
<i>Xerolycosa miniata</i> (C. L. Koch, 1834)	1	1	1	1	1	1	1	.	1	1	.
Fam. MIMETIDAE 1											
<i>Ero furcata</i> (Villers, 1789)	1	1	.	.	.
Fam. MITURGIDAE 3											
<i>!Zora pardalis</i> Simon, 1878	1	1	.	.	.	1	1	.	1	.	.
<i>Zora silvestris</i> Kulczyński, 1897							1	1	.	.	.
<i>Zora spinimana</i> (Sundevall, 1833)	1	.	1	.	.	.	1	.	1	.	.
Fam. PHILODROMIDAE 9											
<i>Philodromus aureolus</i> (Clerck, 1757)	1

Taxon	Habitats										
	Ugb	UgS	GB	GS	AS	OUgS	FE	BF	FM	WB	HD
<i>Philodromus cespitum</i> (Walckenaer, 1802)	1	1	.	.	1	.	1	1	1	.	1
<i>Rhysodromus histrio</i> (Latreille, 1819)	.	1	.	.	1
<i>Thanatus arenarius</i> L. Koch, 1872	1	1	1	1	1	1	1
<i>Thanatus formicinus</i> (Clerck, 1757)	.	.	1
<i>!Thanatus oblongiusculus</i> (Lucas, 1846)	.	1	.	.	1	1
<i>Thanatus sabulosus</i> (Menge, 1875)	1	1	1	.	.	.
<i>Tibellus macellus</i> Simon, 1875	.	1	.	1	1	1
<i>Tibellus oblongus</i> (Walckenaer, 1802)	1	.	1	1	1	1	1	.	1	1	.
Fam. PHOLCIDAE 1											
<i>Pholcus ponticus</i> Thorell, 1875	1
Fam. PHRUROLITHIDAE 2											
<i>Phrurolithus festivus</i> (C. L. Koch, 1835)	1	.	1	.	1	1	1	1	1	.	.
<i>Phrurolithus pullatus</i> Kulczyński, 1897	1	1	1	1	1	1
Fam. PISAURIDAE 1											
<i>Pisaura novicia</i> (L. Koch, 1878)	1	1	1	1	1	1	.
Fam. SALTICIDAE 21											
<i>!!Aelurillus laniger</i> Logunov & Marusik, 2000	.	1	.	.	.	1
<i>Aelurillus v-insignitus</i> (Clerck, 1757)	.	1	.	1	1	1
<i>Asianellus festivus</i> (C. L. Koch, 1834)	.	1	.	.	.	1
<i>Attulus zimmermanni</i> (Simon, 1877)	1	1	1	.	.	.
<i>!!Chalcoscirtus nigrinus</i> (Thorell, 1875)	1
<i>Euophrys frontalis</i> (Walckenaer, 1802)	1	1	1	1	1	1	1
<i>Evarcha arcuata</i> (Clerck, 1757)	1	.	.	.	1	1	1	.	1	1	.
<i>Evarcha falcata</i> (Clerck, 1757)							1	1	1	1	.
<i>Evarcha michailovi</i> Logunov, 1992	1	1	1	.	1	.	.
<i>Heliophanus auratus</i> C. L. Koch, 1835	1	.	1	1	.
<i>Heliophanus cupreus</i> (Walckenaer, 1802)	1	.	1	.	.	.	1	1	1	1	.
<i>Heliophanus flavipes</i> (Hahn, 1832)	1	1	1	1	1	1	1	.	1	.	.
<i>Marpissa muscosa</i> (Clerck, 1757)	1	.	.	.
<i>Myrmarachne formicaria</i> (De Geer, 1778)	1	.	.	1	.	.
<i>Phlegra fasciata</i> (Hahn, 1826)	1	1	1	1	1	1	1

Taxon	Habitats										
	Ugb	UgS	GB	GS	AS	OUgS	FE	BF	FM	WB	HD
<i>Pseudeuophrys obsoleta</i> (Simon, 1868)	1
<i>Sibianor aurocinctus</i> (Ohlert, 1865)	1
<i>Synageles subcingulatus</i> (Simon, 1878)	.	1	1
<i>Talavera aequipes</i> (O. Pickard-Cambridge, 1871)	1	.	1	.	1	1
! <i>Talavera aperta</i> (Miller, 1971)	1	1	.	.
! <i>Talavera petrensis</i> (C. L. Koch, 1837)	.	1	.	1	.	1
Fam. SPARASSIDAE 1											
<i>Micrommata virescens</i> (Clerck, 1757)	1	1	1	1	1	.	.
Fam. TETRAGANTHIDAE 5											
<i>Metellina segmentata</i> (Clerck, 1757)	1	1	.	1	.
<i>Pachygnatha clercki</i> Sundevall, 1823	1	1	.
<i>Pachygnatha degeeri</i> Sundevall, 1830	1	.	1	1	.	.
<i>Pachygnatha listeri</i> Sundevall, 1830	1	1	1	1	.
<i>Tetragnatha montana</i> Simon, 1874	1	1	1	.
Fam. THERIDIIDAE 21											
<i>Asagena phalerata</i> (Panzer, 1801)	1	1	1	1	1	1	1
<i>Crustulina guttata</i> (Wider, 1834)	1	1	1	.	.	.
<i>Enoplognatha latimana</i> Hippa et Oksala	1	1
<i>Enoplognatha ovata</i> (Clerck, 1757)	1	1	1	1	1	1	.
<i>Enoplognatha thoracica</i> (Hahn, 1833)	1	.	.	1	.	.	.
<i>Episinus angulatus</i> (Blackwall, 1836)	1	.	.	.
<i>Euryopsis flavomaculata</i> (C. L. Koch, 1836)	1	1	.	.	.
! <i>Euryopsis quinqueguttata</i> Thorell, 1875	1	.	1
!! <i>Laseola coracina</i> (C. L. Koch, 1837)	1
<i>Neottiura bimaculata</i> (Linnaeus, 1767)	1	.	.	.	1	.	1	1	1	1	.
<i>Parasteatoda lunata</i> (Clerck, 1757)	1	.	.	.
<i>Parasteatoda tabulata</i> Levi, 1980
<i>Parasteatoda tepidariorum</i> (C. L. Koch, 1841)
<i>Phylloneta impressa</i> (L. Koch, 1881)	1	1	1	1	1	1	1	.	1	.	.

Taxon	Habitats										
	Ugb	UgS	GB	GS	AS	OUgS	FE	BF	FM	WB	HD
<i>Robertus arundineti</i> (O. Pickard-Cambridge, 1871)	1
<i>Robertus lividus</i> (Blackvall, 1836)	.	.	.	1	.	.	1
<i>Steatoda albomaculata</i> (De Geer, 1778)	.	.	1	1	.	1	1
<i>Steatoda castanea</i> (Clerck, 1757)	1
<i>Theridion innocuum</i> Thorell, 1875	1
<i>Theridion melanurum</i> Hahn, 1831	1
<i>Theridion varians</i> Hahn, 1833	1	.	.	.
Fam. THOMISIDAE 17											
<i>Bassanioides robustus</i> (Hahn, 1832)	.	.	1	.	.	1
<i>Cozyptila blackwalli</i> Simon, 1875	1
<i>Ebrechtella tricuspidata</i> (Fabricius, 1775)	1	1	1	.	1	.
<i>Heriaeus oblongus</i> Simon, 1918	.	1	.	.	1	1
<i>Misumena vatia</i> (Clerck, 1757)	1	.	1	.	1	.	1	.	1	1	.
<i>Ozyptila claveata</i> (Walckenaer, 1937)	1
<i>Ozyptila praticola</i> (C. L. Koch, 1837)	1	1	1	.	.
<i>Ozyptila pullata</i> (Thorell, 1875)	.	1
<i>Ozyptila scabricula</i> (Westring, 1851)	1	1	1	1	1	1	1	.	1	.	.
<i>Ozyptila trux</i> (Blackwall, 1846)	1	1	1	.
<i>Spiracme striatipes</i> L. Koch, 1870	1	1	1	1	1	1	.	.	1	.	.
<i>Thomisus onustus</i> (Walck.)	1	1	1	1	1	1	.	.	1	.	.
<i>Tmarus piger</i> (Walckenaer, 1802)	1	1	1	.	.	.
<i>Xysticus cristatus</i> (Clerck, 1757)	1	1	1	1	1	1	1	.	1	1	.
<i>Xysticus kochi</i> Thorell, 1872	.	1	.	.	1	1	1
<i>Xysticus luctator</i> L. Koch, 1870	1	1	.	.	.
<i>Xysticus ulmi</i> (Hahn, 1831)	1	1	1	.
Fam. TITANOECIDAE 2											
<i>Titanoeca schineri</i> L. Koch, 1872	1
<i>!Titanoeca veteranica</i> Herman, 1879	.	.	.	1	1
Fam. ULOBORIDAE 1											
<i>Uloborus walckenaerius</i> Latreille, 1806	.	1	.	.	.	1
Total number of species	97	77	63	62	75	96	108	73	88	51	

Abbreviations: UgB – ungrazed gully bottom, UgS – ungrazed gully slope, GB – grazed gully bottom, GS – grazed gully slope, AS – abandoned slope, OUgS – other ungrazed slopes, FE – forest edges, BF – bairak forests, FM – floodplain meadows, WB – banks of waterbodies, HD – human dwelling and outbuildings. The total number of species in a particular family is given after the family name. * – species listed in the Red Data Book of the Kharkiv Region, !! – species rare in Ukraine, ! – regionally rare species.

Table S2. Annual changes in alpha diversity of spider assemblages at the monitoring plots during the study period.

Study years	Monitoring plots									
	ungrazed bottom		grazed bottom		ungrazed slope		grazed slope		abandoned slope	
	Sh	E	Sh	E	Sh	E	Sh	E	Sh	E
2012	2.543	0.385	2.433	0.479	2.866	0.651	2.627	0.494	–	–
2013	2.914	0.410	2.597	0.517	2.852	0.619	2.602	0.540	2.778	0.503
2014	2.462	0.326	–	–	2.549	0.609	2.311	0.593	2.485	0.462
2015	2.699	0.425	2.466	0.436	2.623	0.550	1.441	0.352	2.098	0.302
2016	2.581	0.413	1.841	0.300	2.822	0.510	2.401	0.459	–	–
2017	2.671	0.452	1.353	0.168	2.775	0.553	–	–	2.314	0.421
2018	2.156	0.247	1.776	0.227	2.644	0.485	–	–	2.459	0.377
2019	2.426	0.323	2.036	0.333	2.675	0.440	–	–	2.644	0.414

Sh – Shannon index, E – Evenness.

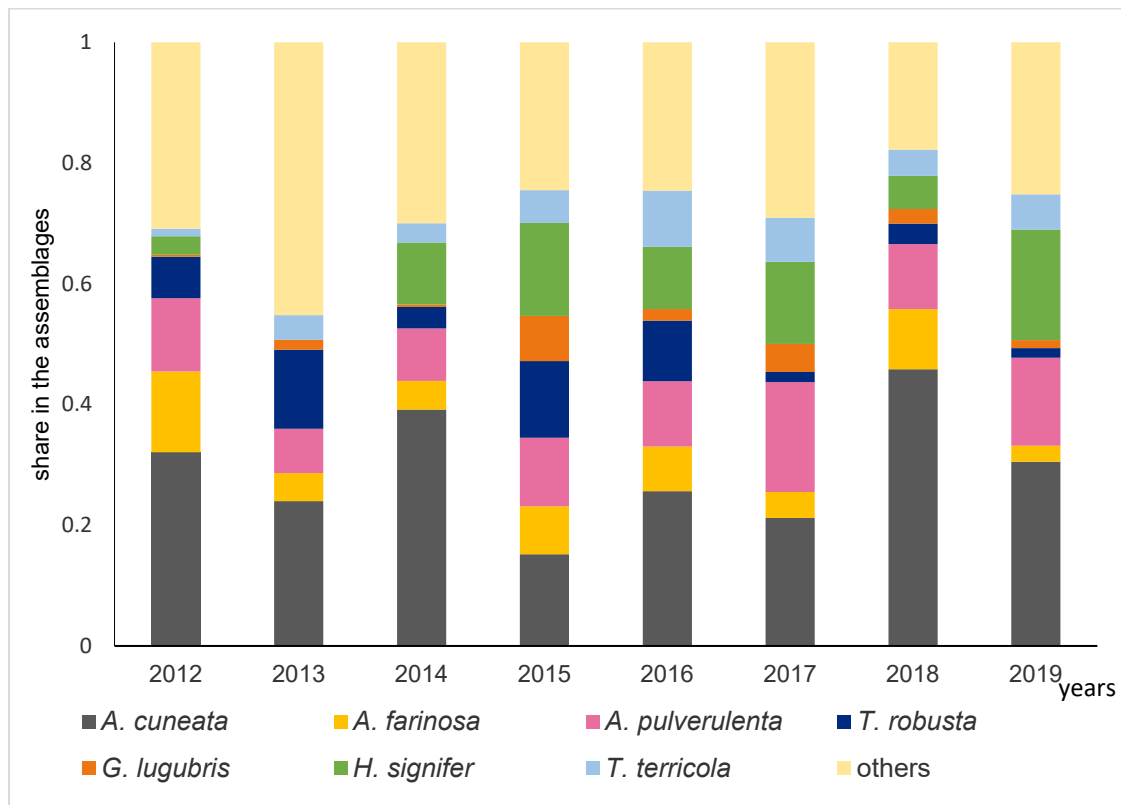


Figure S1. Dominant spider complexes in the ungrazed gully bottom (UgB) in the study years

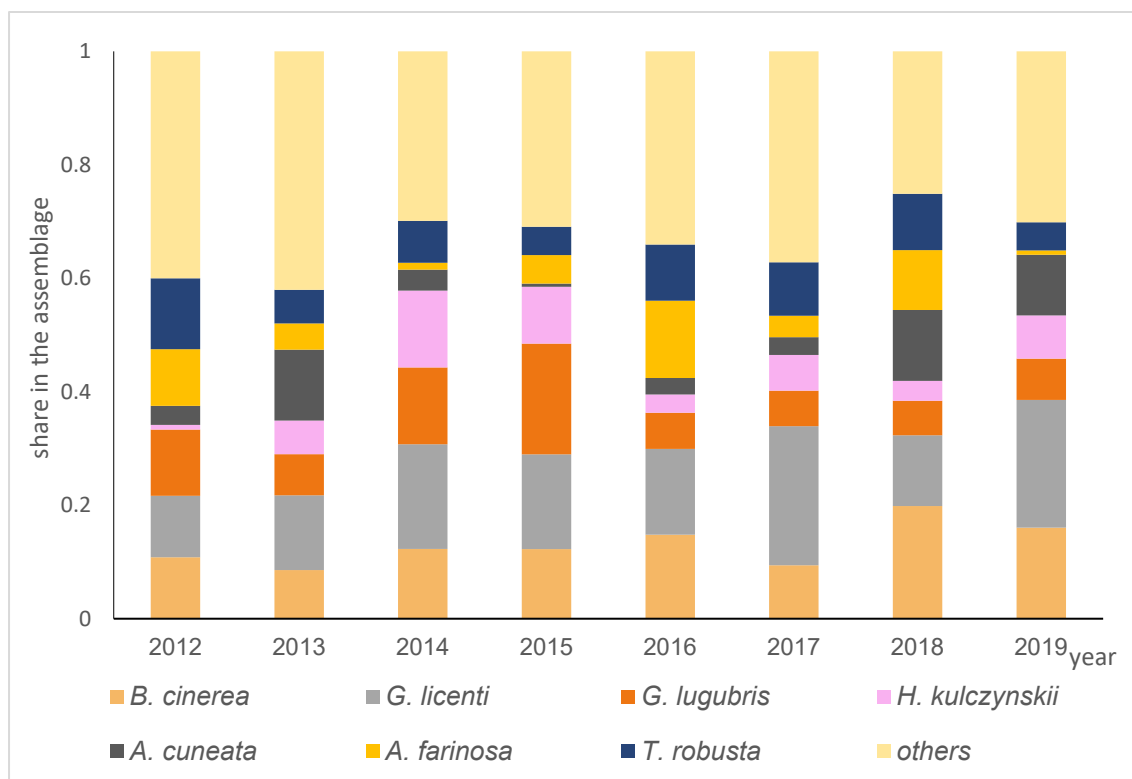


Figure S2. Dominant spider complexes on the ungrazed gully slope (UgS) in the study years

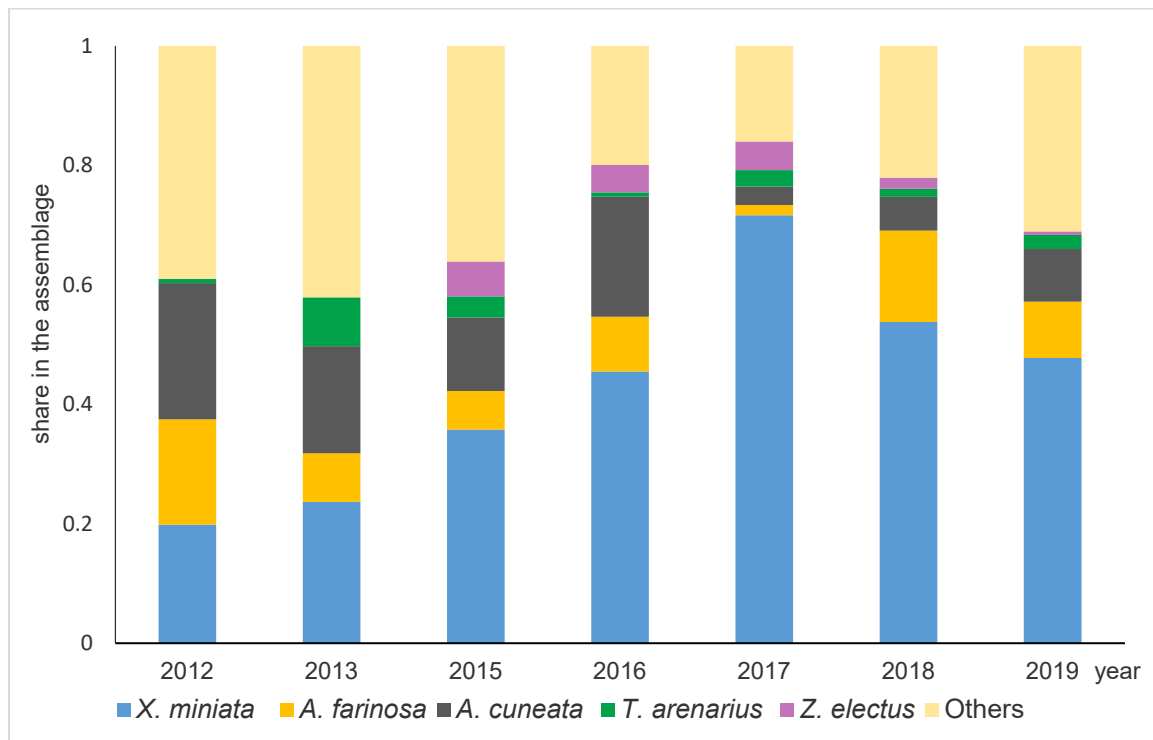


Figure S3. Dominant spider complexes in the grazed gully bottom (GB) in the study years

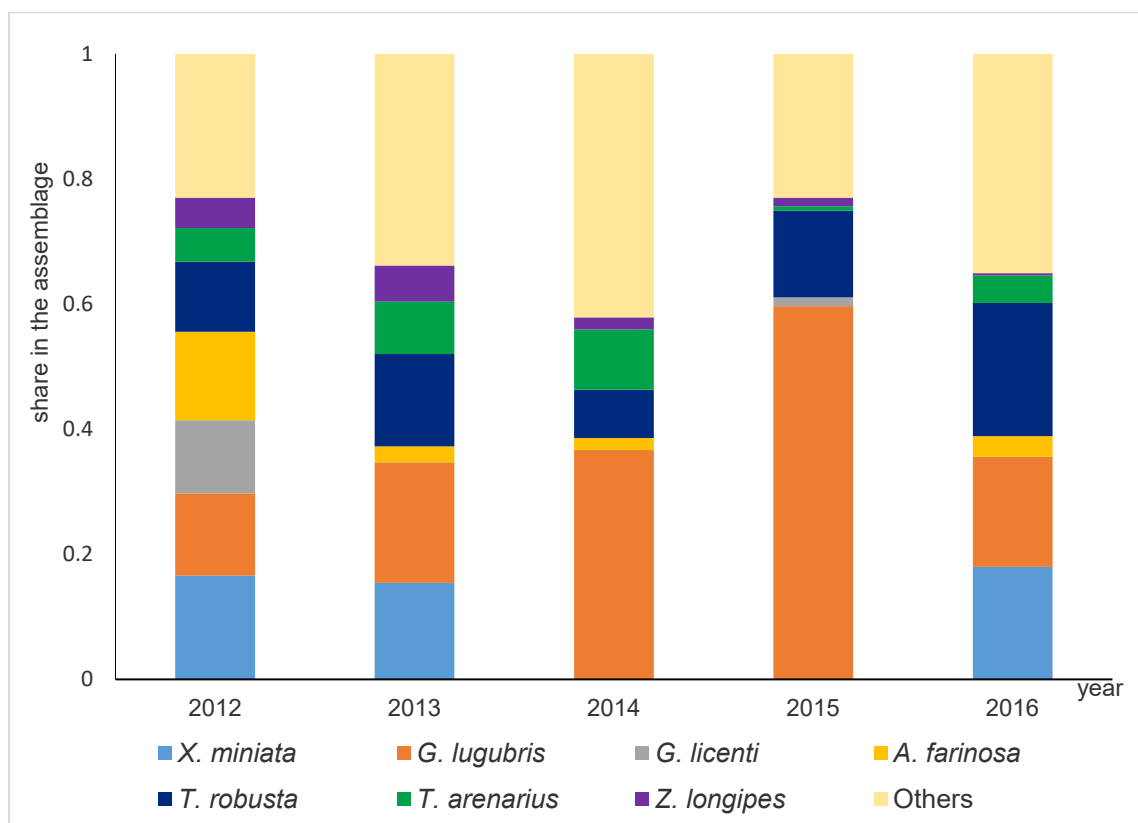


Figure S4. Dominant spider complexes on the grazed gully slope (GS) in the study years

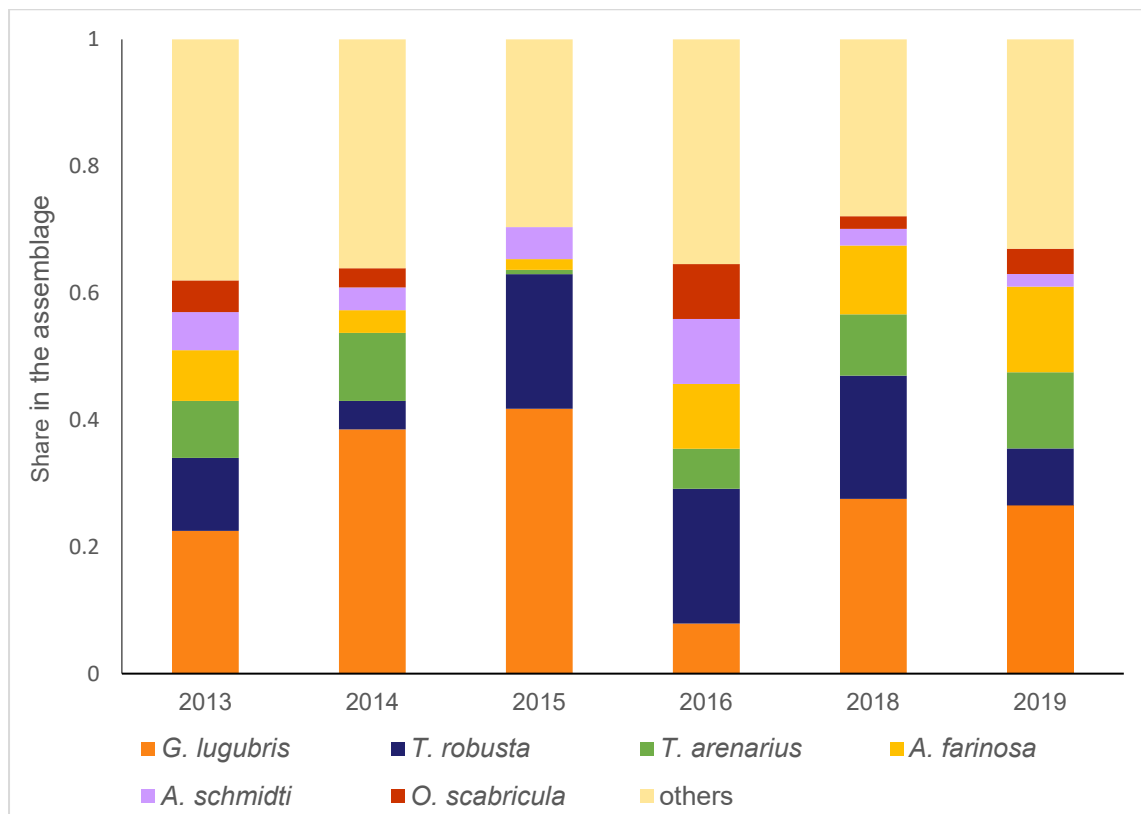
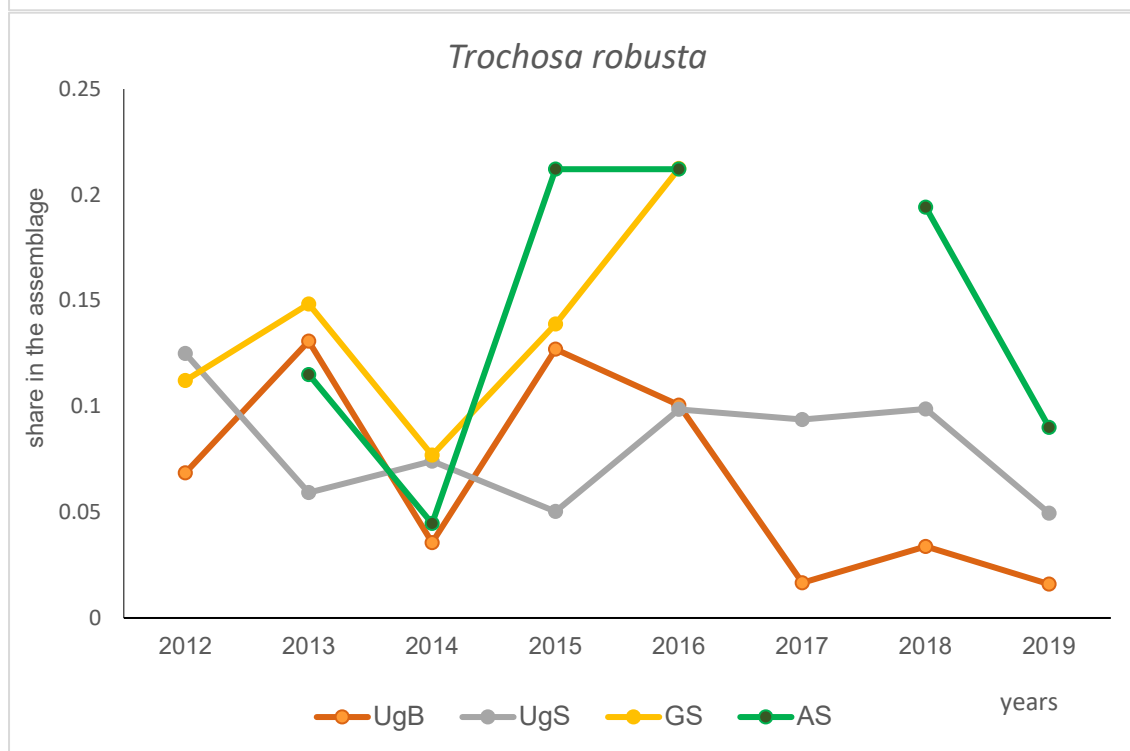
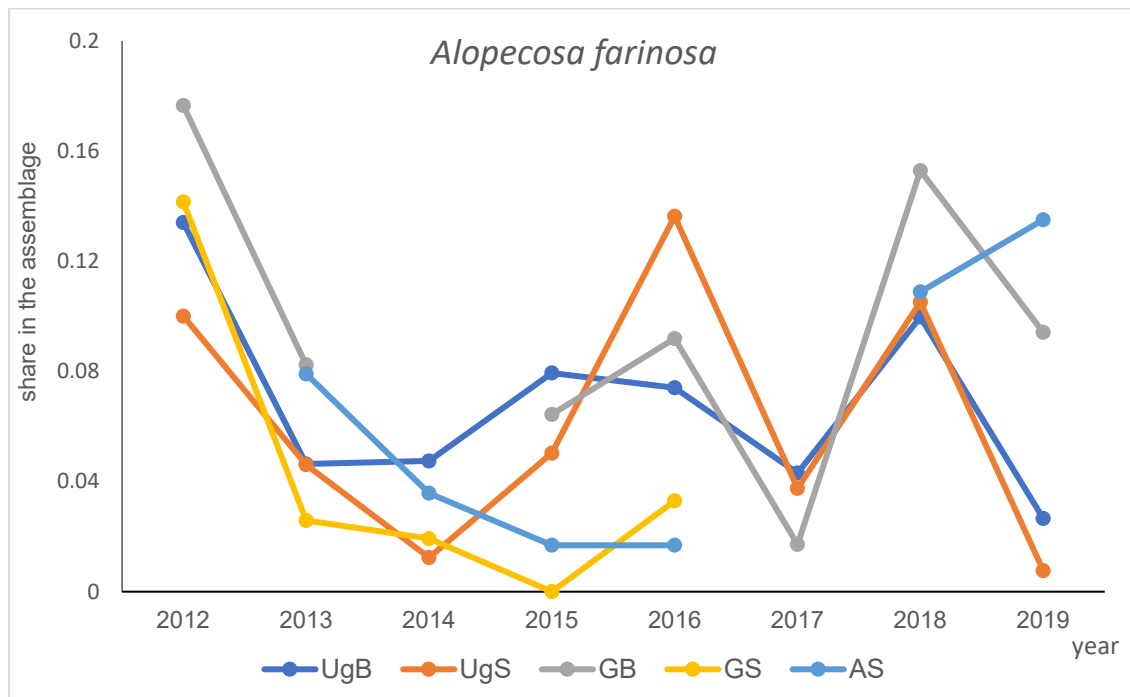


Figure S5. Dominant spider complexes on the abandoned gully slope (AS) in the study years



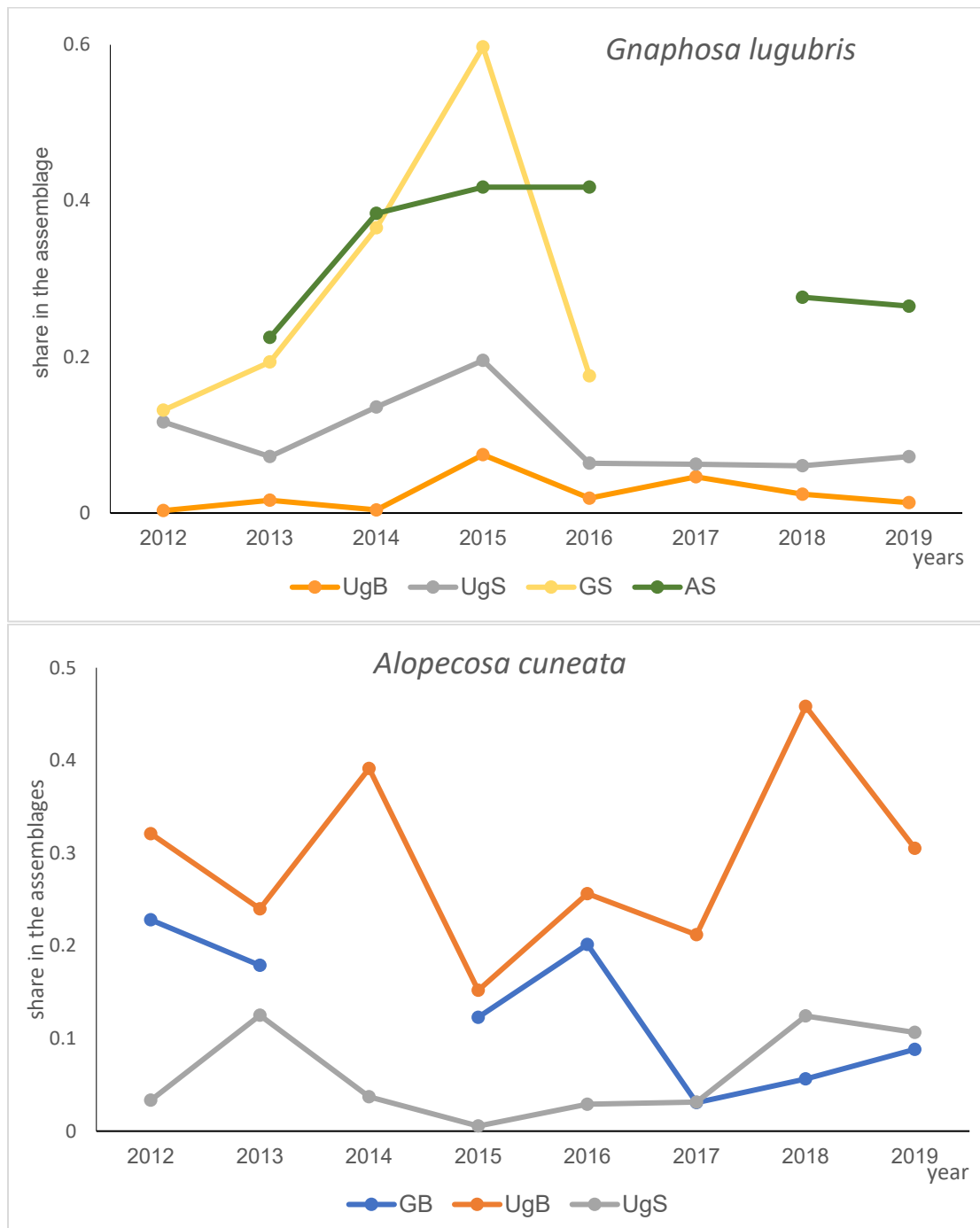


Figure S6. Eight-year dynamics of the most numerous spider species at the monitoring plots. For the abbreviations, see Table 1.