

[6-(Thiophen-2-yl)-2,2'-bipyridine]bis(triphenylphosphine) Copper(I) Tetrafluoroborate

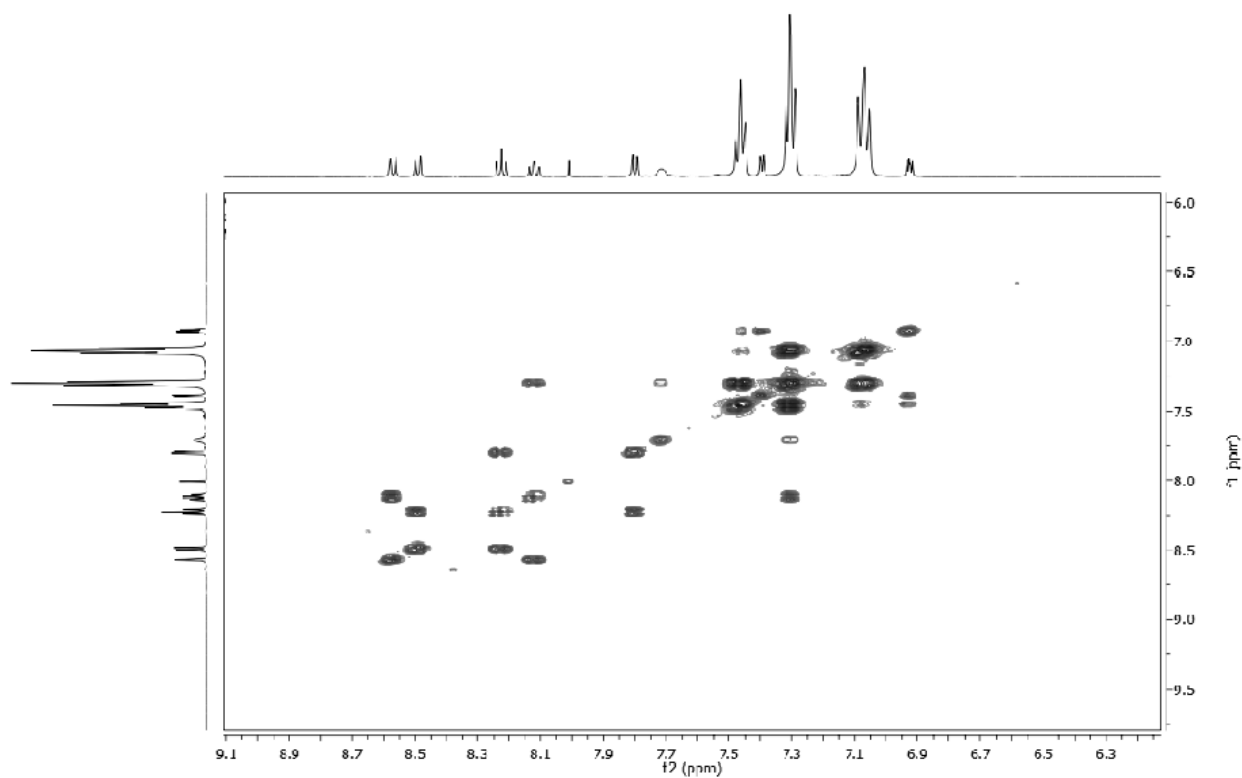


Figure S1. ^1H - ^1H -COSY NMR spectrum of the complex.

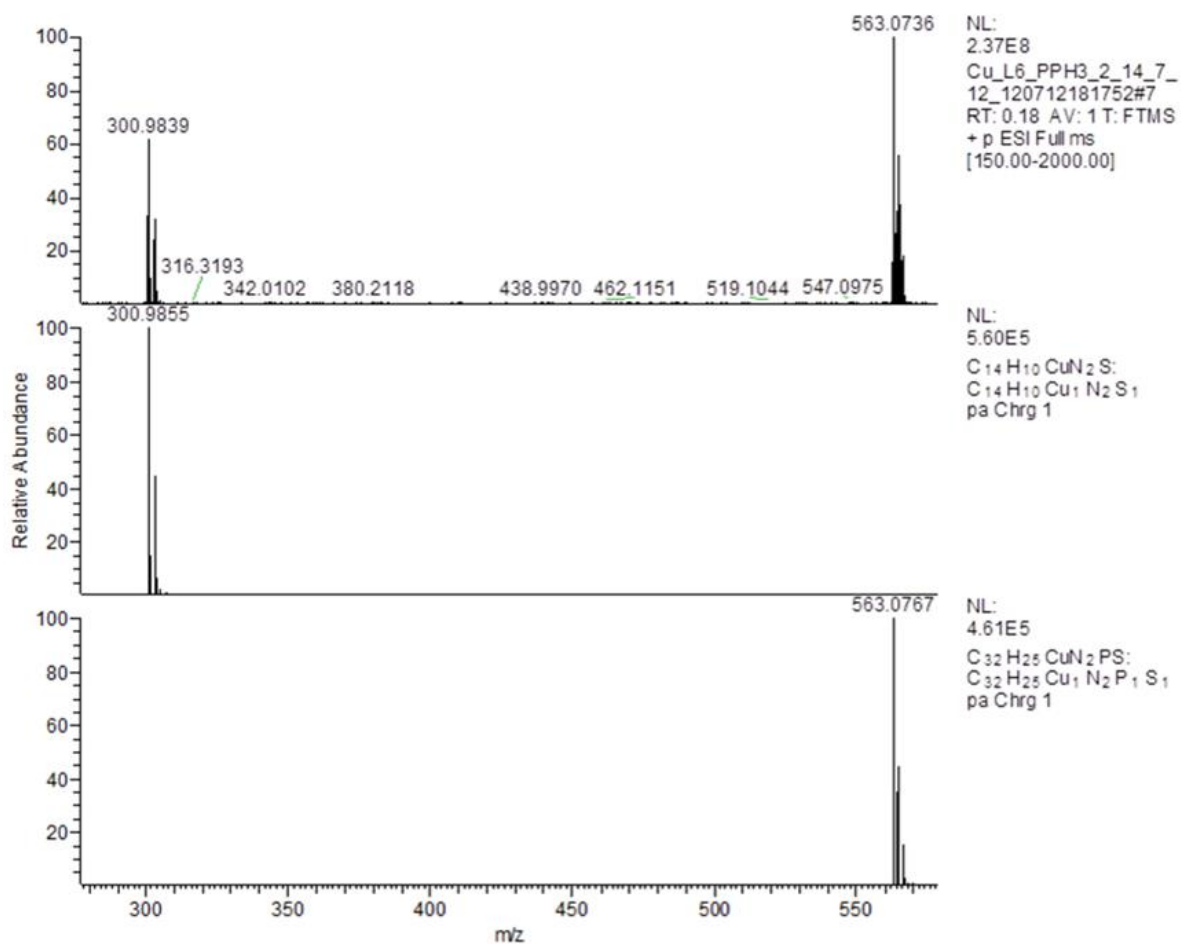


Figure S2. HR ESI-MS spectrum of the complex in acetone (top) and theoretical spectrum for the fragments [CuL₂]⁺ (middle) and [CuLP]⁺ (bottom).