

Supporting Information

Contents

Figure S1: 300 MHz ^1H NMR spectrum of **1** (CDCl_3)

Figure S2: 300 MHz ^1H NMR spectrum of **3** (CDCl_3)

Figure S3: 300 MHz ^1H NMR spectrum of **4** (CD_3COCD_3)

Figure S1: 300 MHz ^1H NMR spectrum of **1** (CDCl_3)

4.42 (2H, m), 4.03 (2H, m), 2.54 (3H, s)

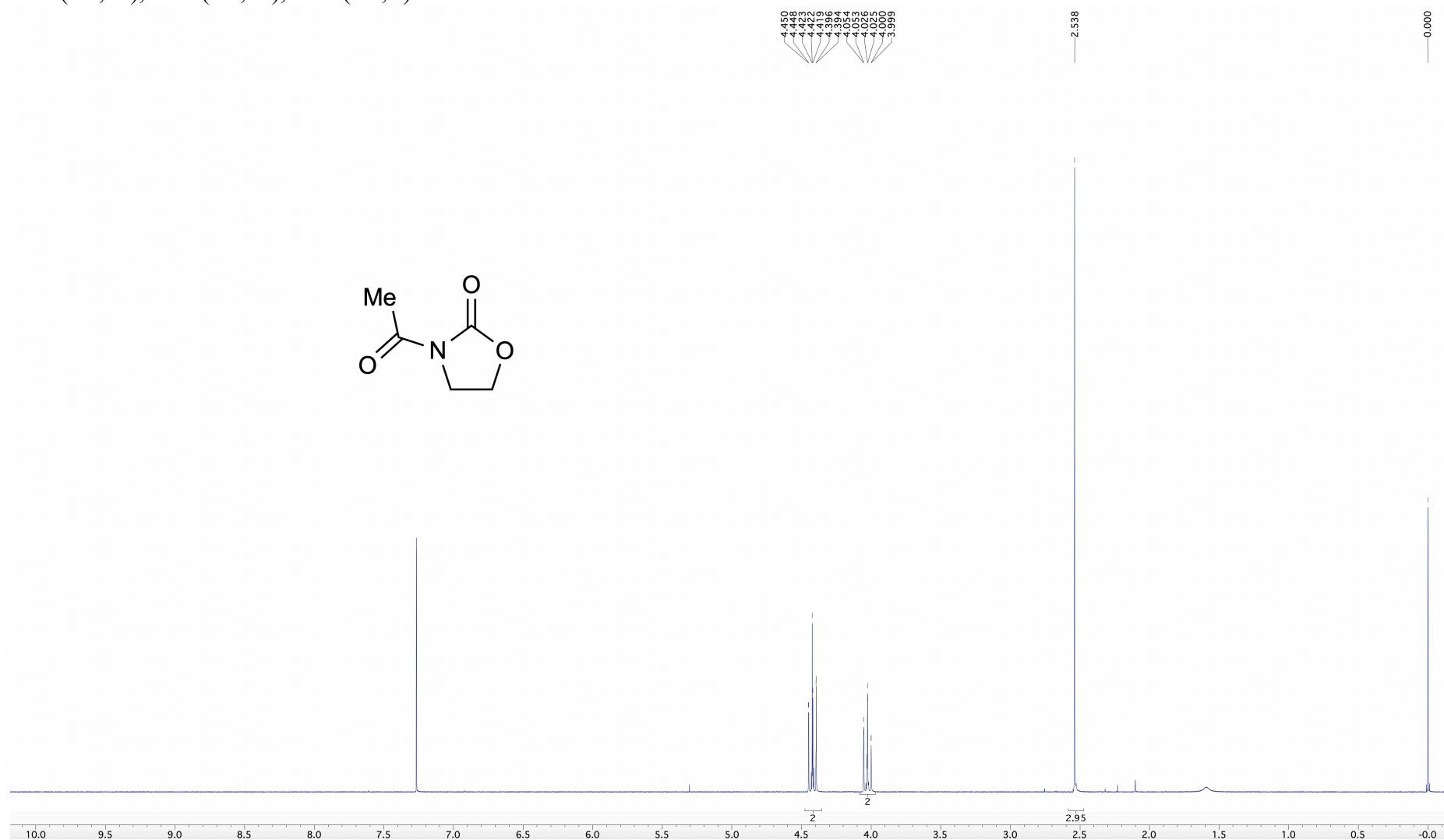


Figure S2: 300 MHz ^1H NMR spectrum of **3** (CDCl_3)

7.27 (1H, d, J 2 Hz), 6.86 (1H, d, J 2 Hz), 2.63 (3H, s)

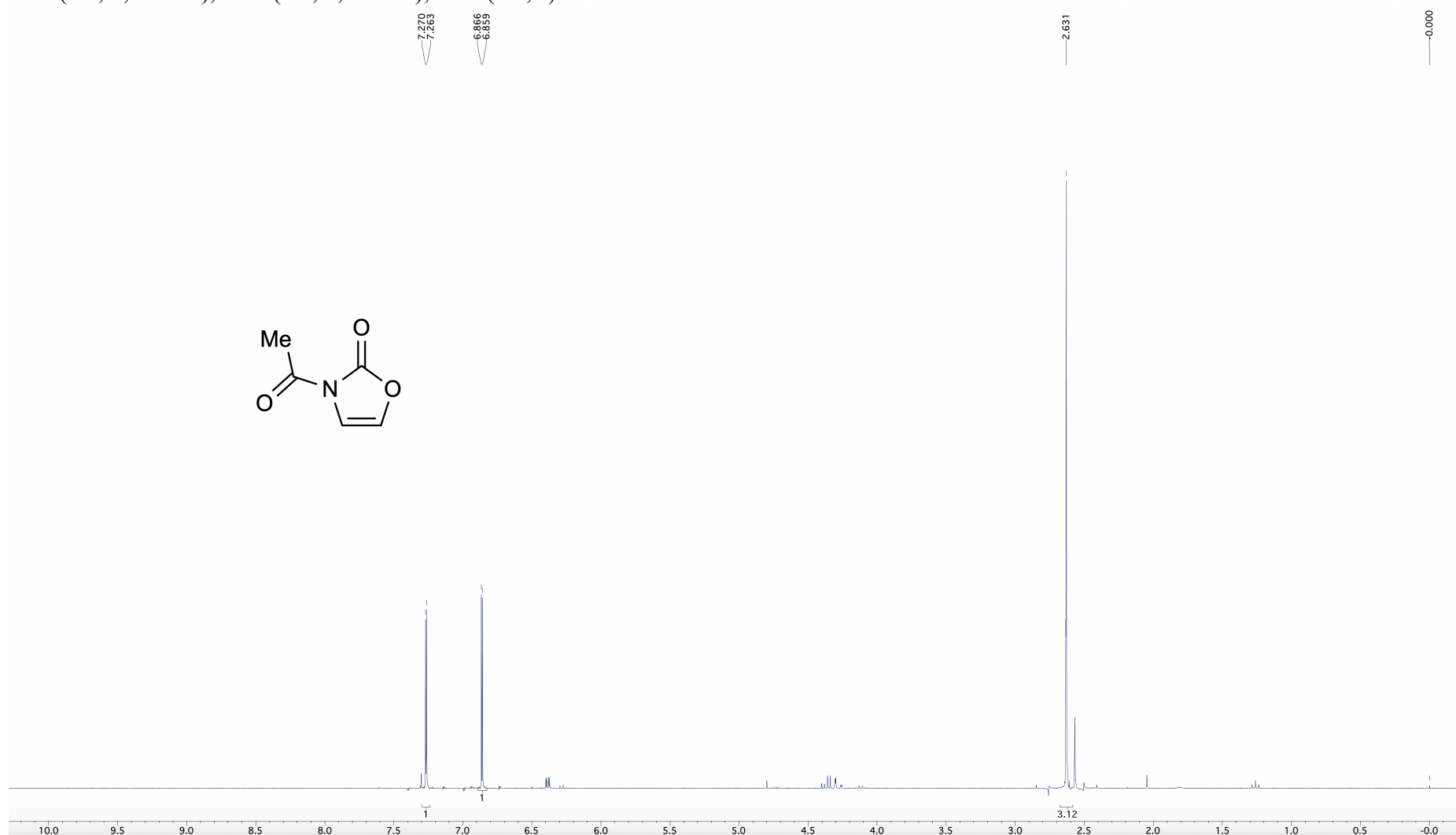


Figure S3: 300 MHz ^1H NMR spectrum of **4** (CD_3COCD_3)

6.97 (1H, d, J 2 Hz), 6.89 (1H, d, J 2 Hz)

