

Communication

Crystal Structure of a Chiral *Sec*-Amine, 4-Chloro-*N*-(1-(pyridin-2-yl)ethyl)aniline

Adesola A. Adeleke ^{1,2} and Bernard Omondi ^{1,*}

¹ School of Chemistry and Physics, University of Kwazulu-Natal, Pietermaritzburg Campus, Private Bag X01, Scottsville 3209, South Africa; 217080311@stu.ukzn.ac.za

² Department of Chemical Sciences, Olabisi Onabanjo University, Ago-Iwoye P. M. B. 2002, Ogun State 120107, Nigeria

* Correspondence: owaga@ukzn.ac.za

Supplementary information

Citation: Adeleke, A.A.; Omondi, B.

Crystal Structure of a Chiral *Sec*-Amine, 4-chloro-*N*-(1-(pyridin-2-yl)ethyl)aniline. *Molbank* **2022**, 2022, M1335. <https://doi.org/10.3390/10.3390/M1335>

Academic Editor: R. Alan Aitken

Received: 1 January 2022

Accepted: 7 February 2022

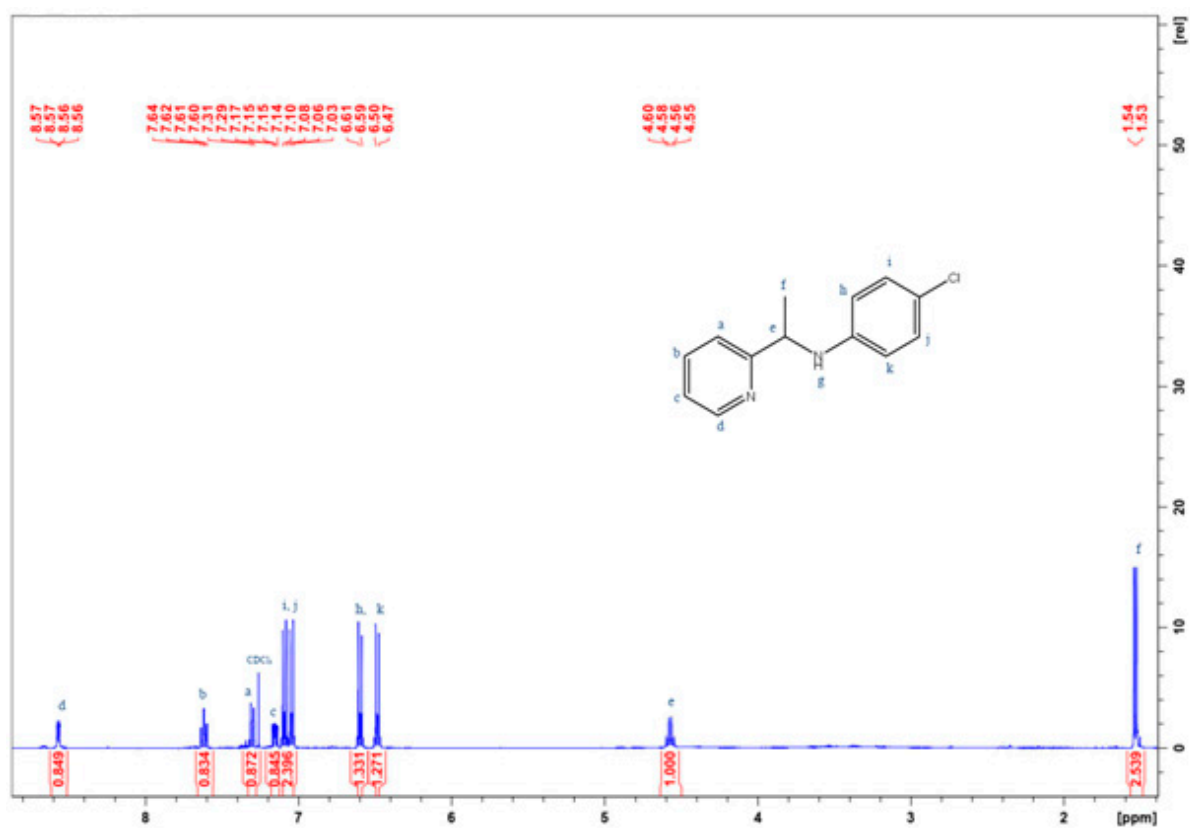
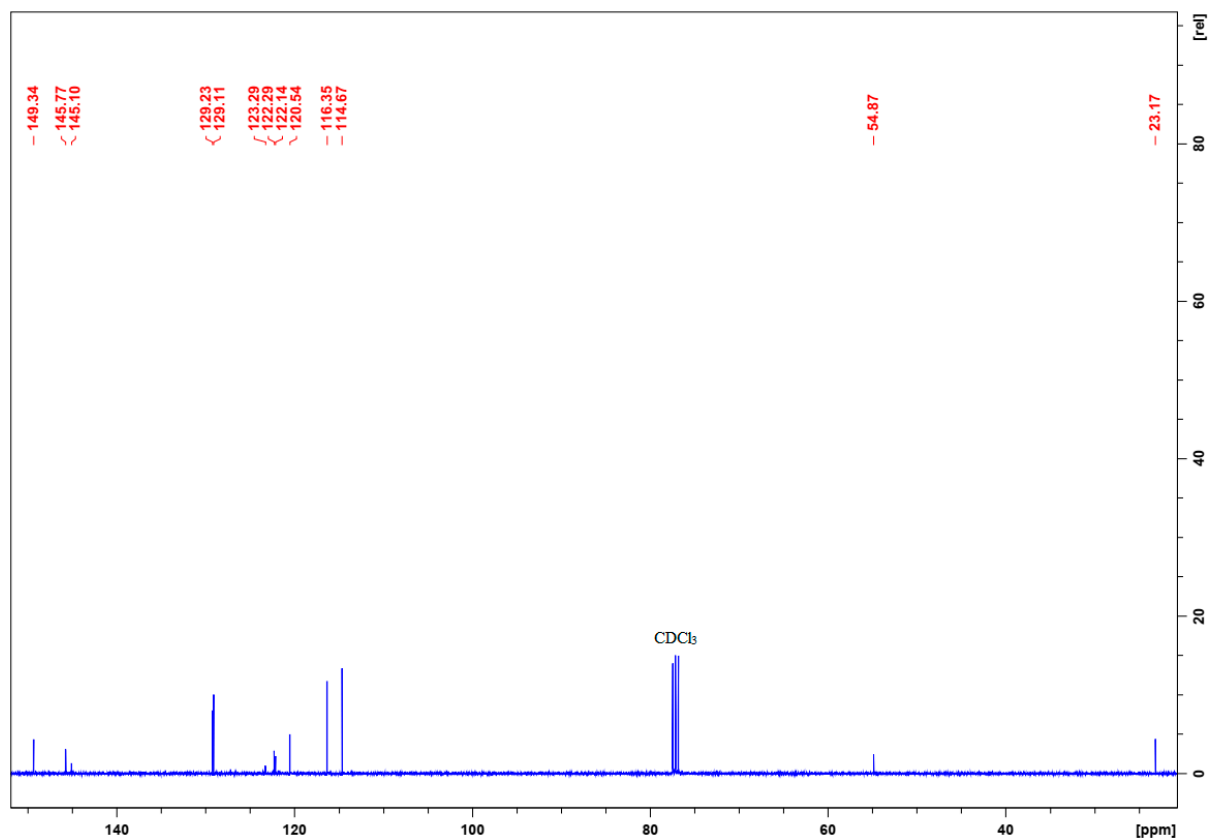
Published: 9 February 2022

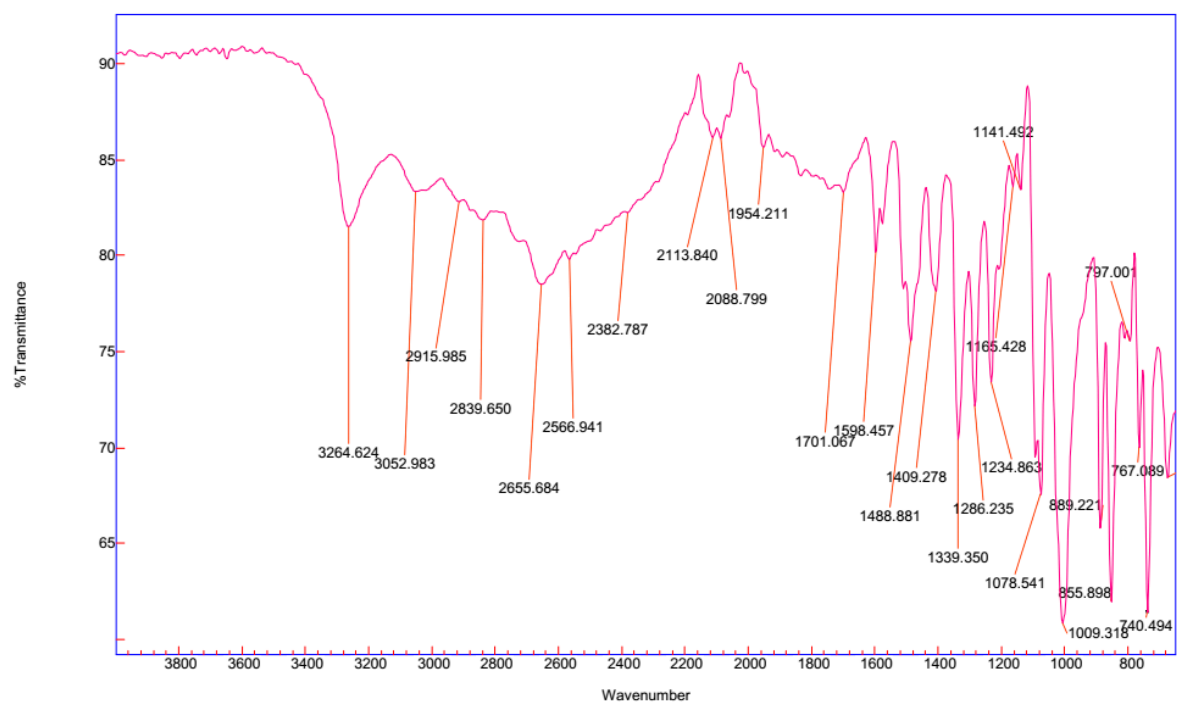
Publisher's Note: MDPI stays neutral with regard to jurisdictional claims in published maps and institutional affiliations.



Copyright: © 2022 by the authors.

Submitted for possible open access publication under the terms and conditions of the Creative Commons Attribution (CC BY) license (<https://creativecommons.org/licenses/by/4.0/>).

Figure S1. ¹H NMR spectrum of Lb.Figure S2. ¹³C NMR spectrum of Lb.

Agilent Resolutions Pro**Figure S3.** ¹ FT-IR spectrum of Lb.