

Figure S1: 500 MHz ^1H NMR spectrum of **1** (CDCl_3)

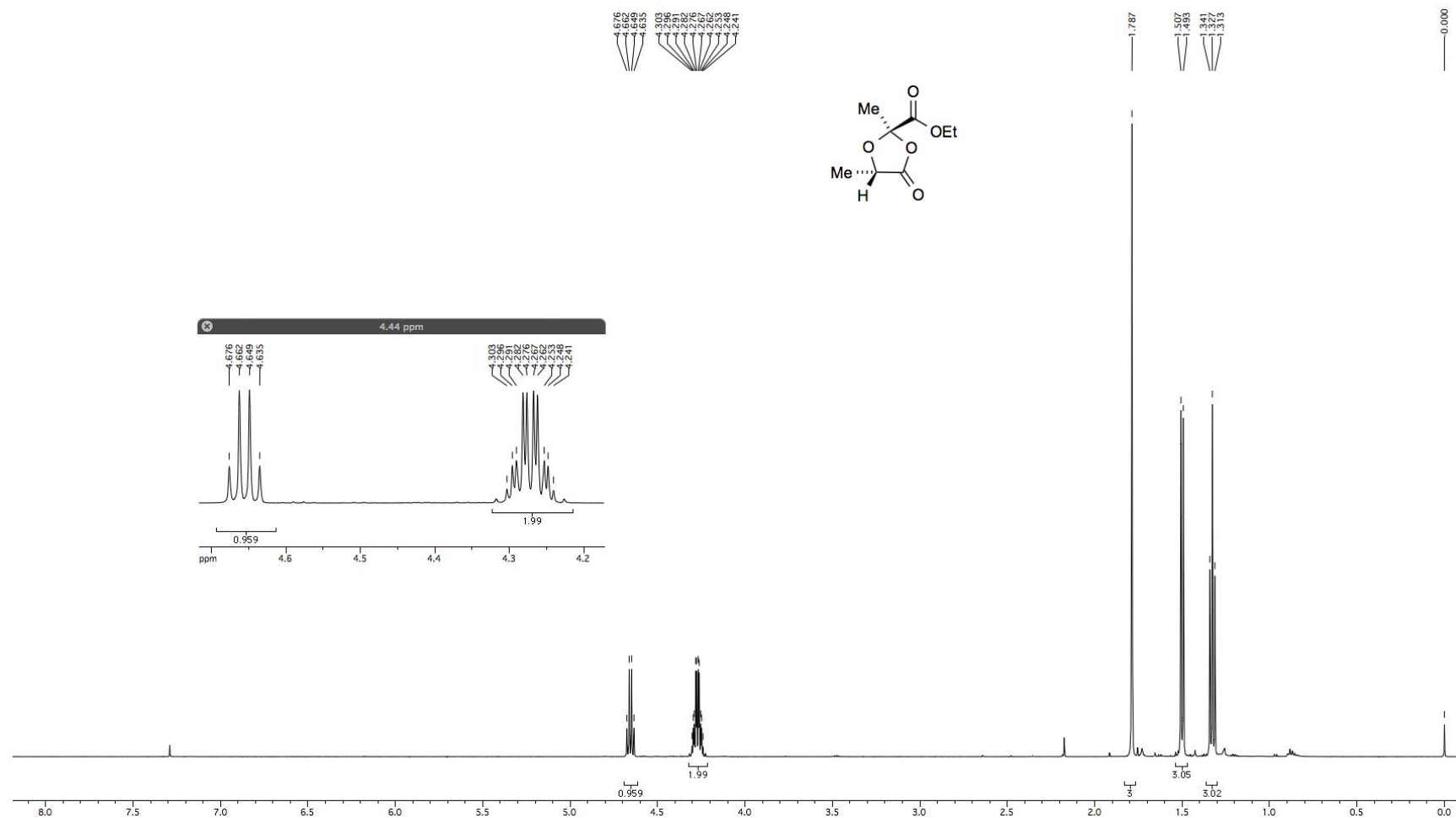


Figure S2: Detail of OCH₂ signal in 500 MHz ¹H NMR spectrum of **1**, (left) simulation and (right) experimental data

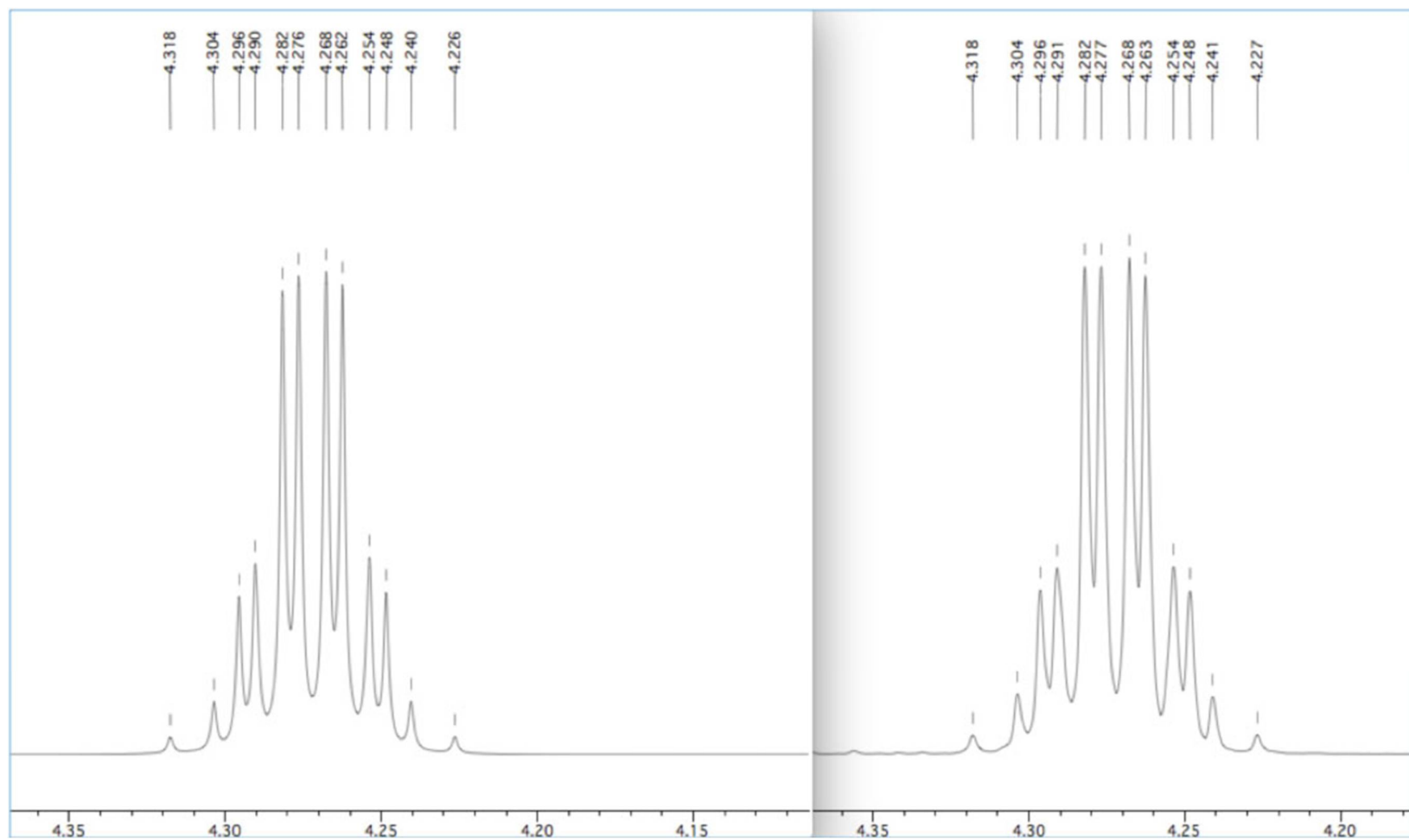
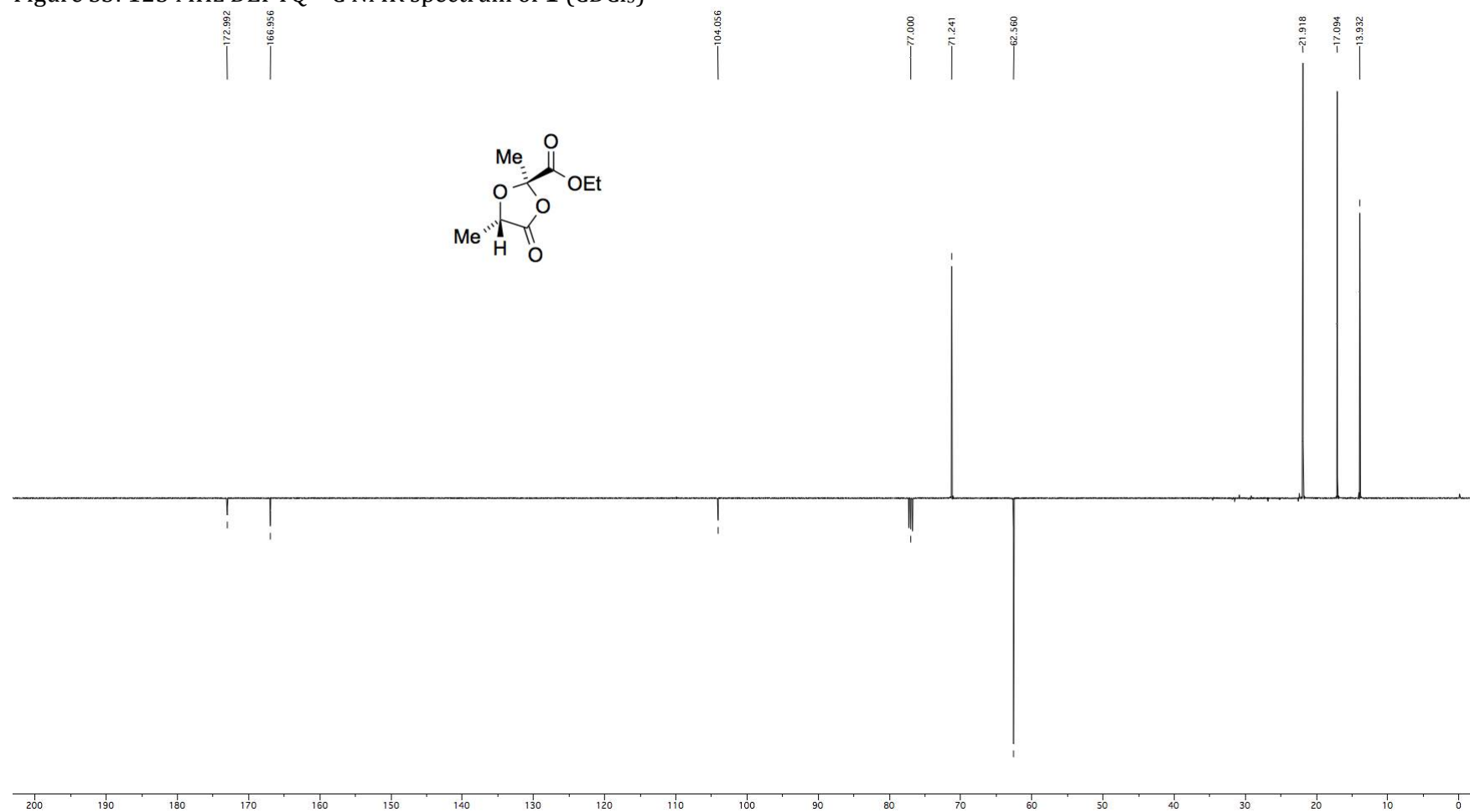


Figure S3: 125 MHz DEPTQ ^{13}C NMR spectrum of **1** (CDCl_3)



Chemical structures of the diastereomers (3) and (4) are shown above the spectrum. The spectrum displays peaks corresponding to the protons in these molecules. The integration values (1.17, 3.26, 3.35, 1.11, 4.4, 1.17, 3.26, 3.35, 1.1, 4.4) are consistent with the 3:1 ratio of the diastereomers.

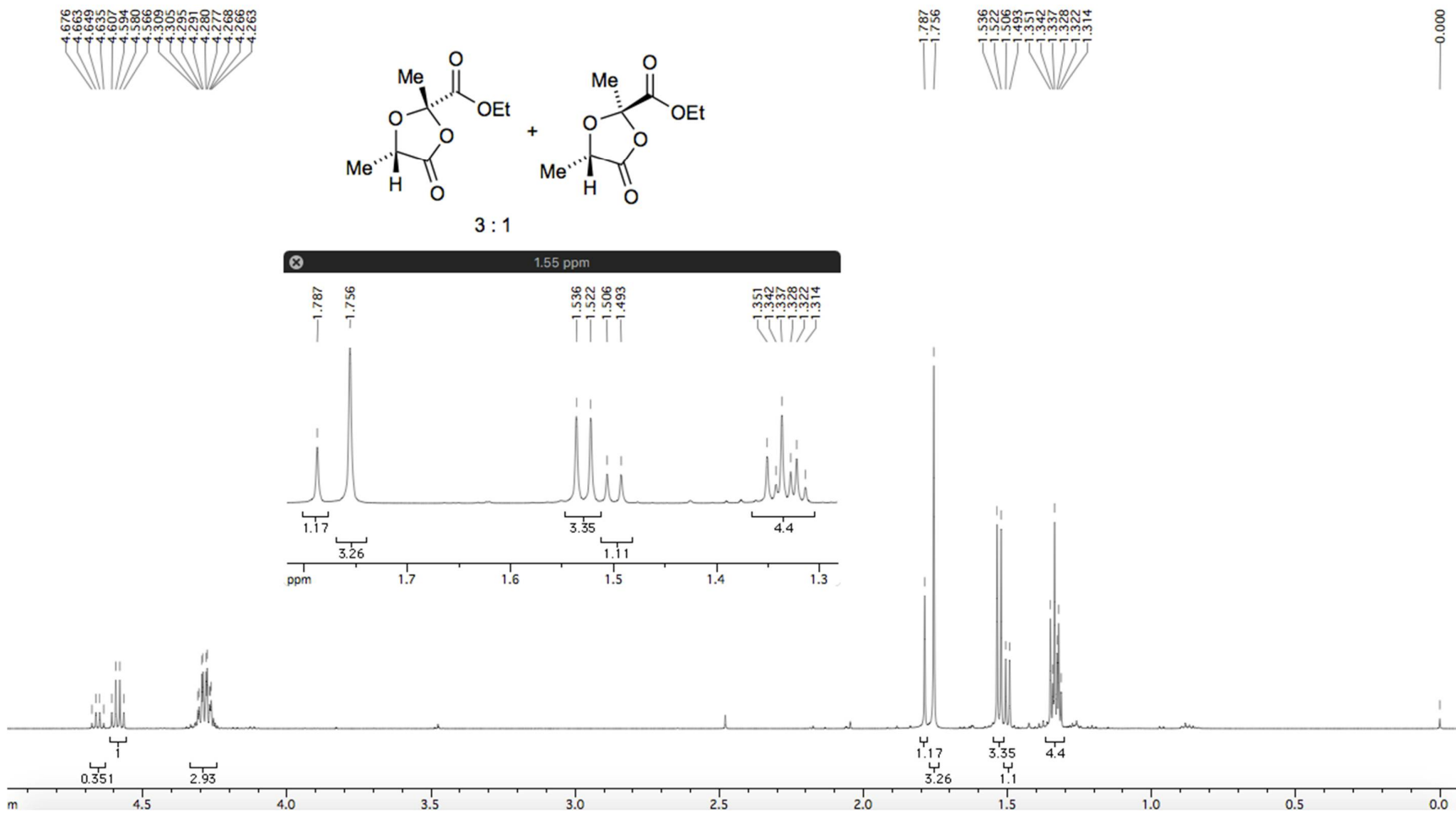


Figure S5: 75 MHz ^{13}C NMR spectrum of *ca.* 5:4 mixture of **1'** and **1** (CDCl_3)

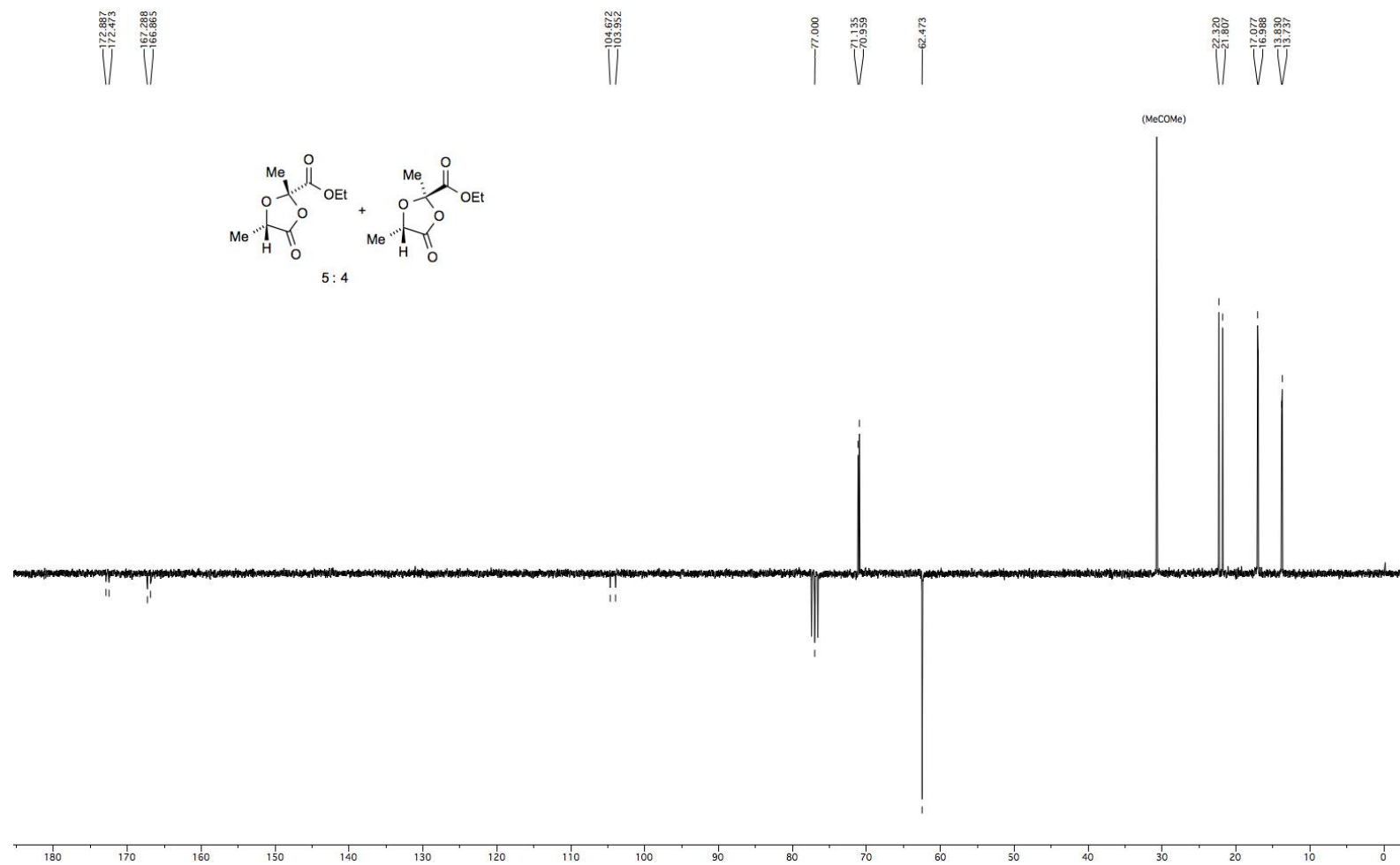


Figure S6: 500 MHz ^1H NMR spectrum of **2** (CDCl_3)

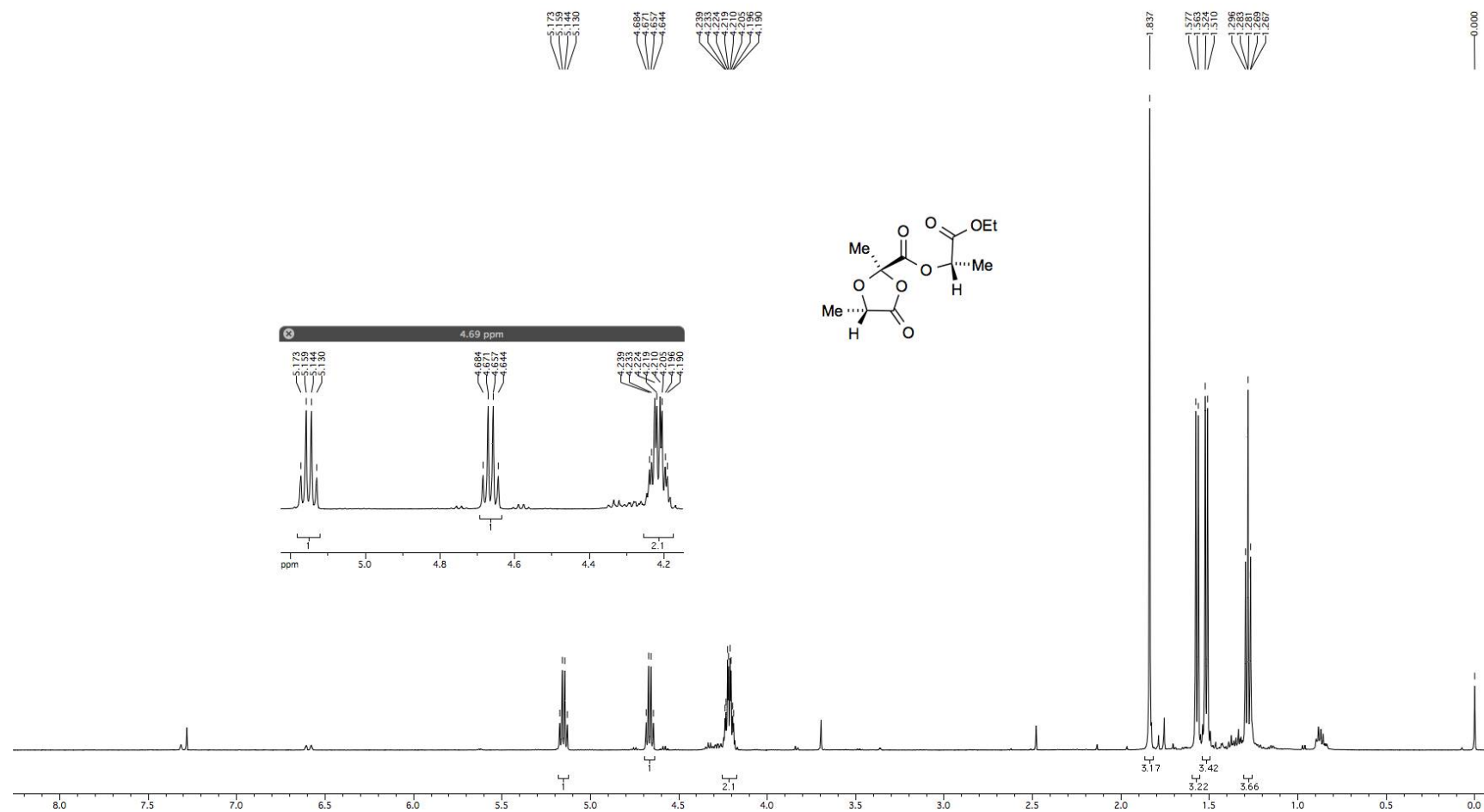


Figure S7: 125 MHz DEPTQ ^{13}C NMR spectrum of **2** (CDCl_3)

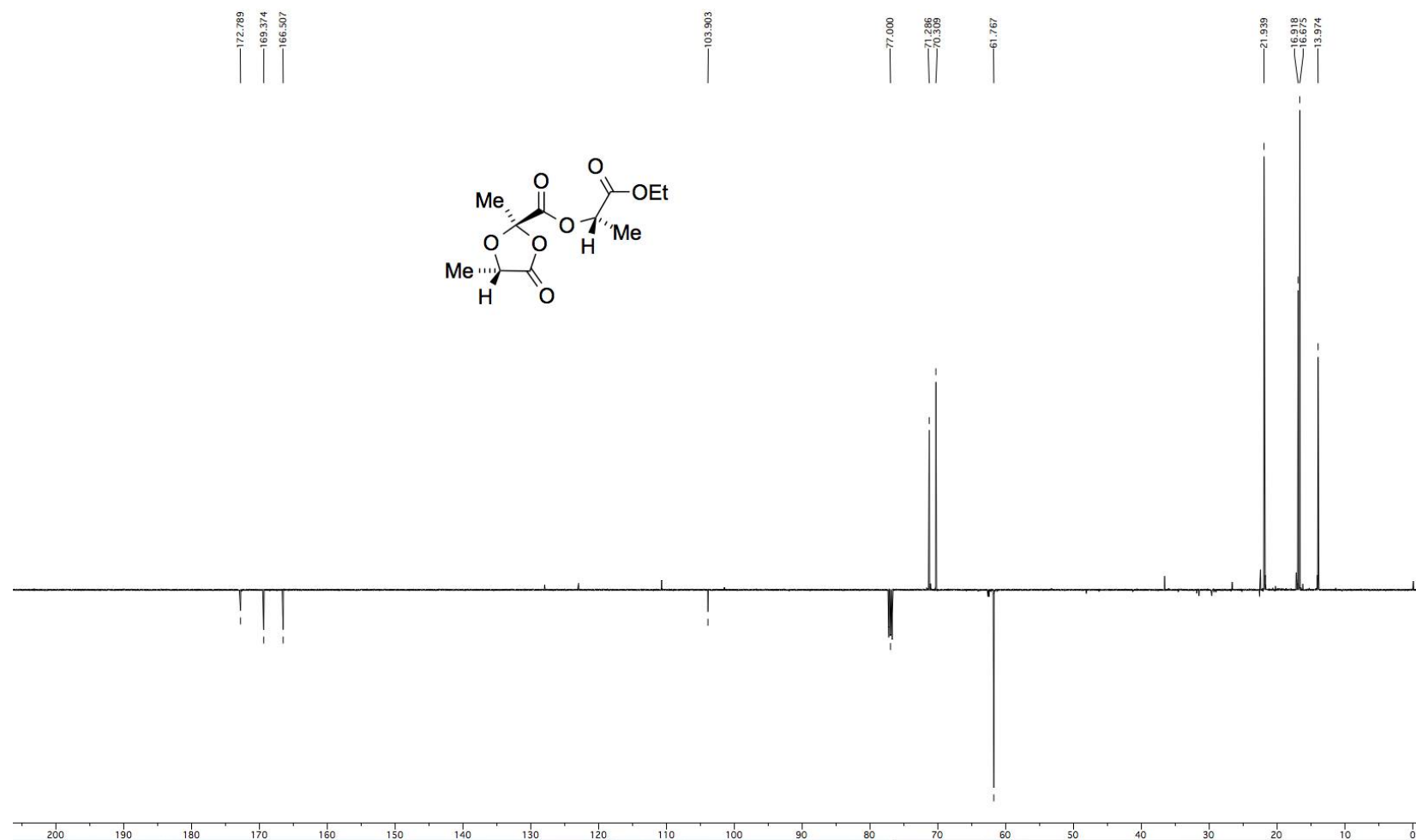


Figure S8: 500 MHz COSY H-H correlation spectrum of **2**

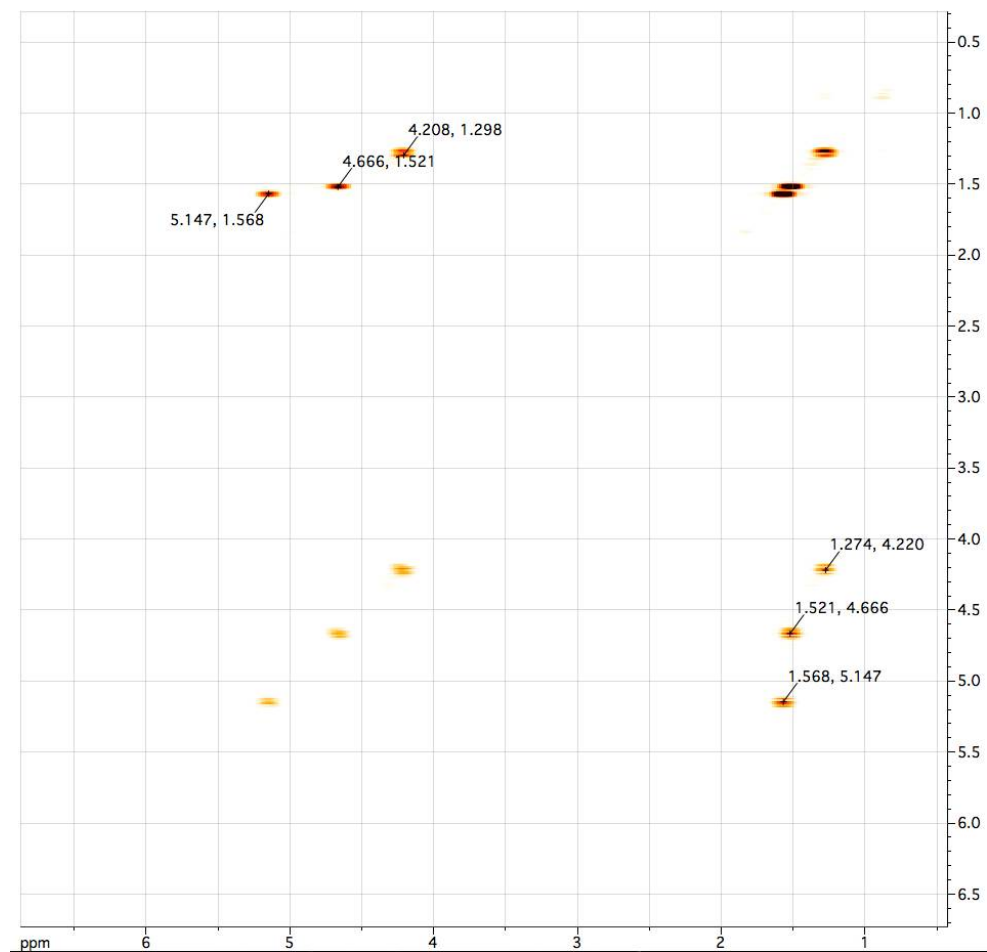


Figure S9: HMBC C-H correlation spectrum of **2**

