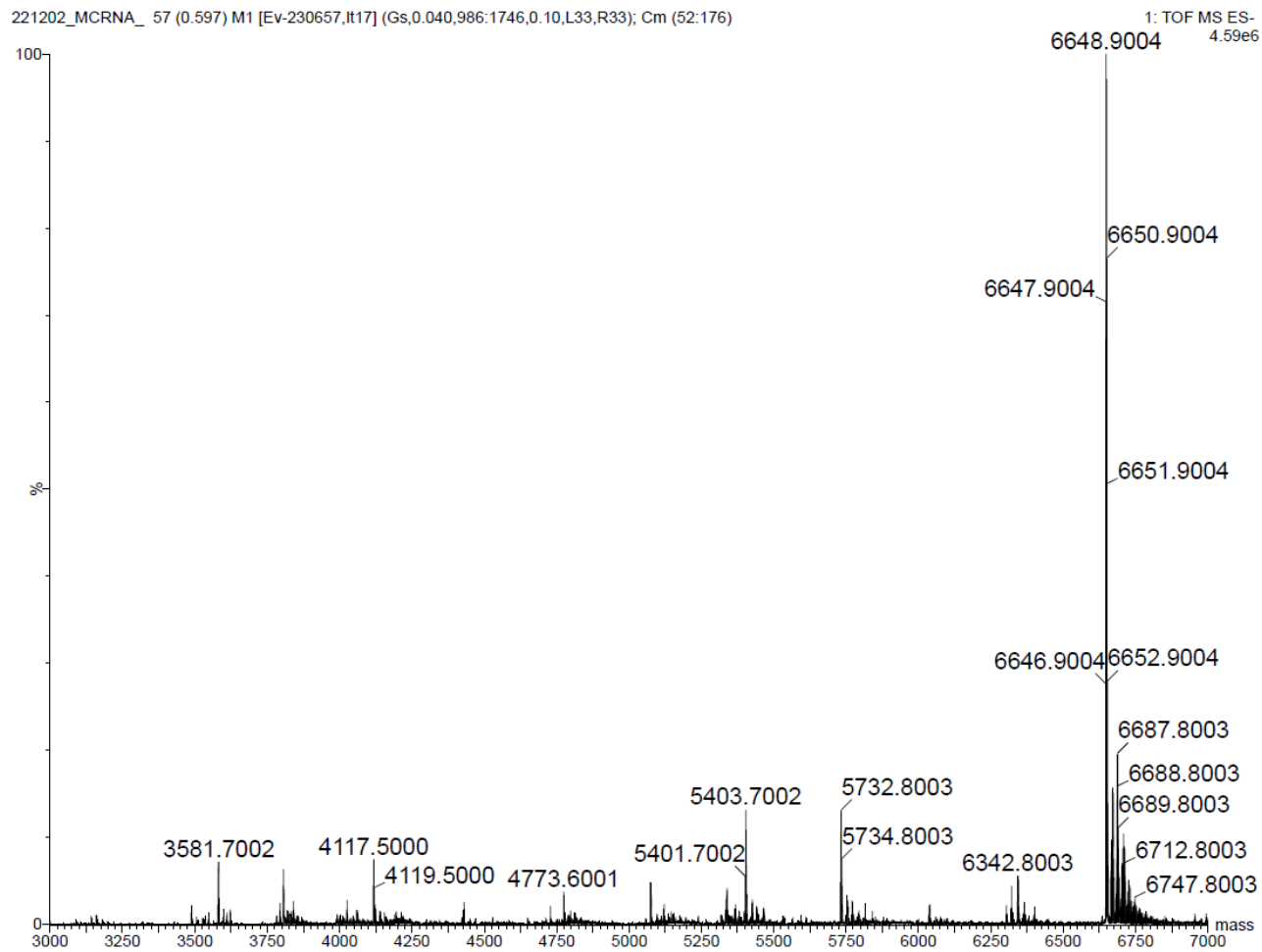


Mass spectra of oligonucleotides.

RNA substrate

5' – CUC AAG UCU UGU AUG GGA CUC 3'; M(calc) 6650.018

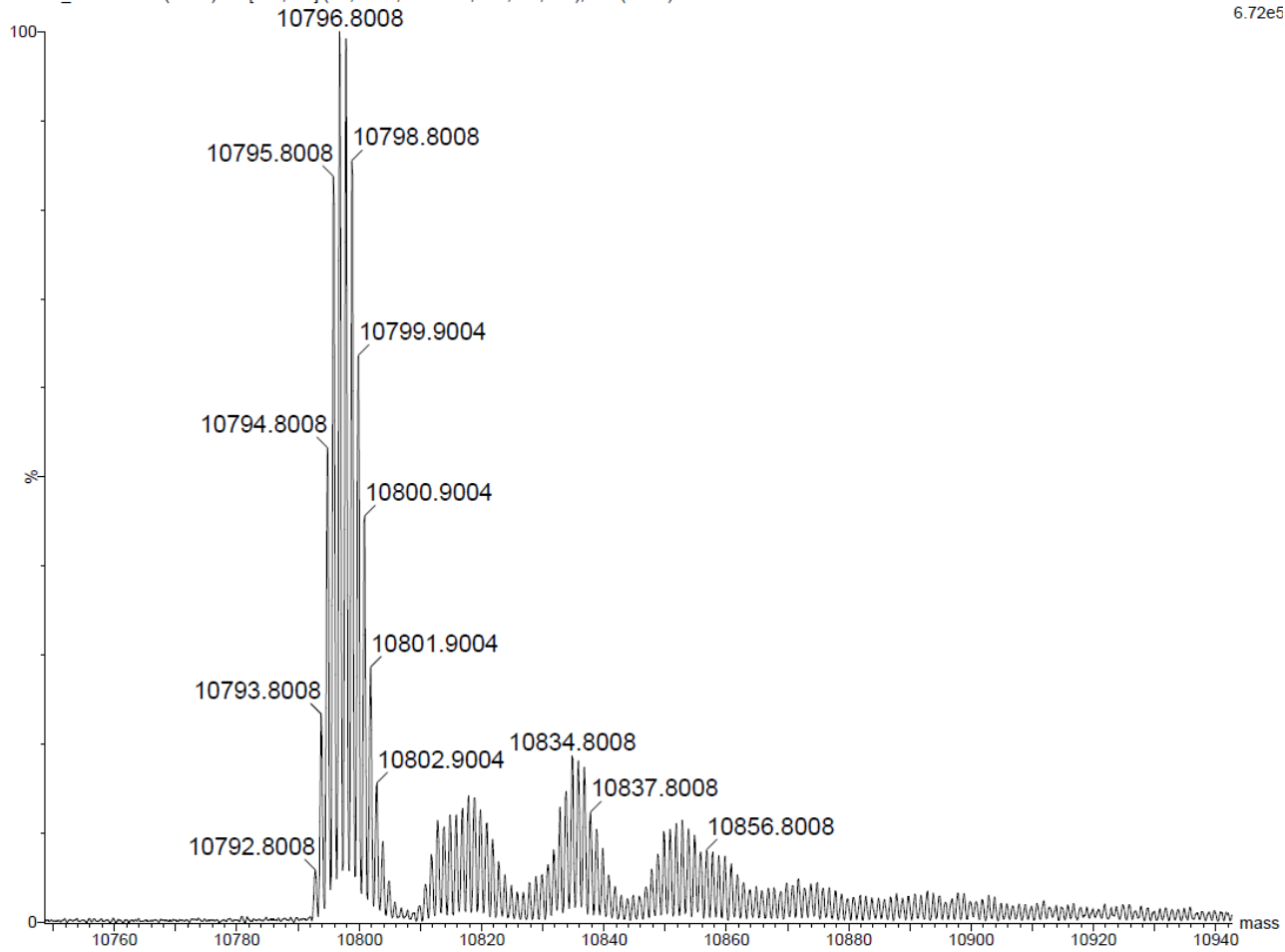


**wt-Dz**

5' – GAG TCC CAT A GG CTA GCT ACA ACG A AA GAC TTG AG 3'; M(calc) 10798.107

221202\_MCDNA 89 (0.917) M1 [Ev0,It14] (Gs,0.040,717:2000,0.10,L33,R33); Cm (58:98)

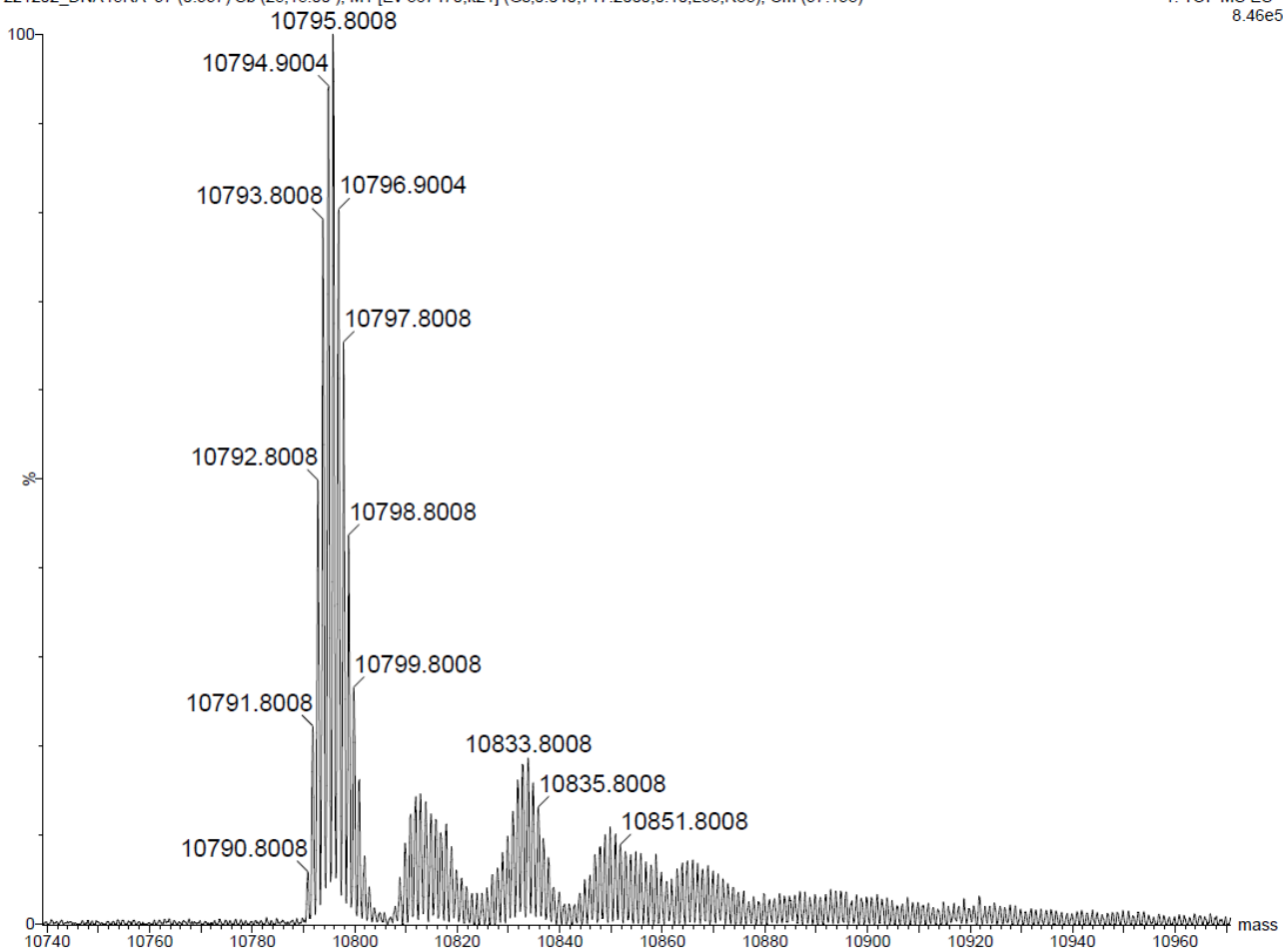
1: TOF MS ES-  
6.72e5



**RcdA5-Dz**

5' – GAG TCC CAT A GGCT **R-cdA** GCT ACA ACGA AA GAC TTG AG 3'; M(calc) 10796.047  
221202\_DNA15RA\_97 (0.997) Sb (25,15.00); M1 [Ev-367470,It21] (Gs,0.040,717:2000,0.10,L33,R33); Cm (97:193)

1: TOF MS ES-  
8.46e5

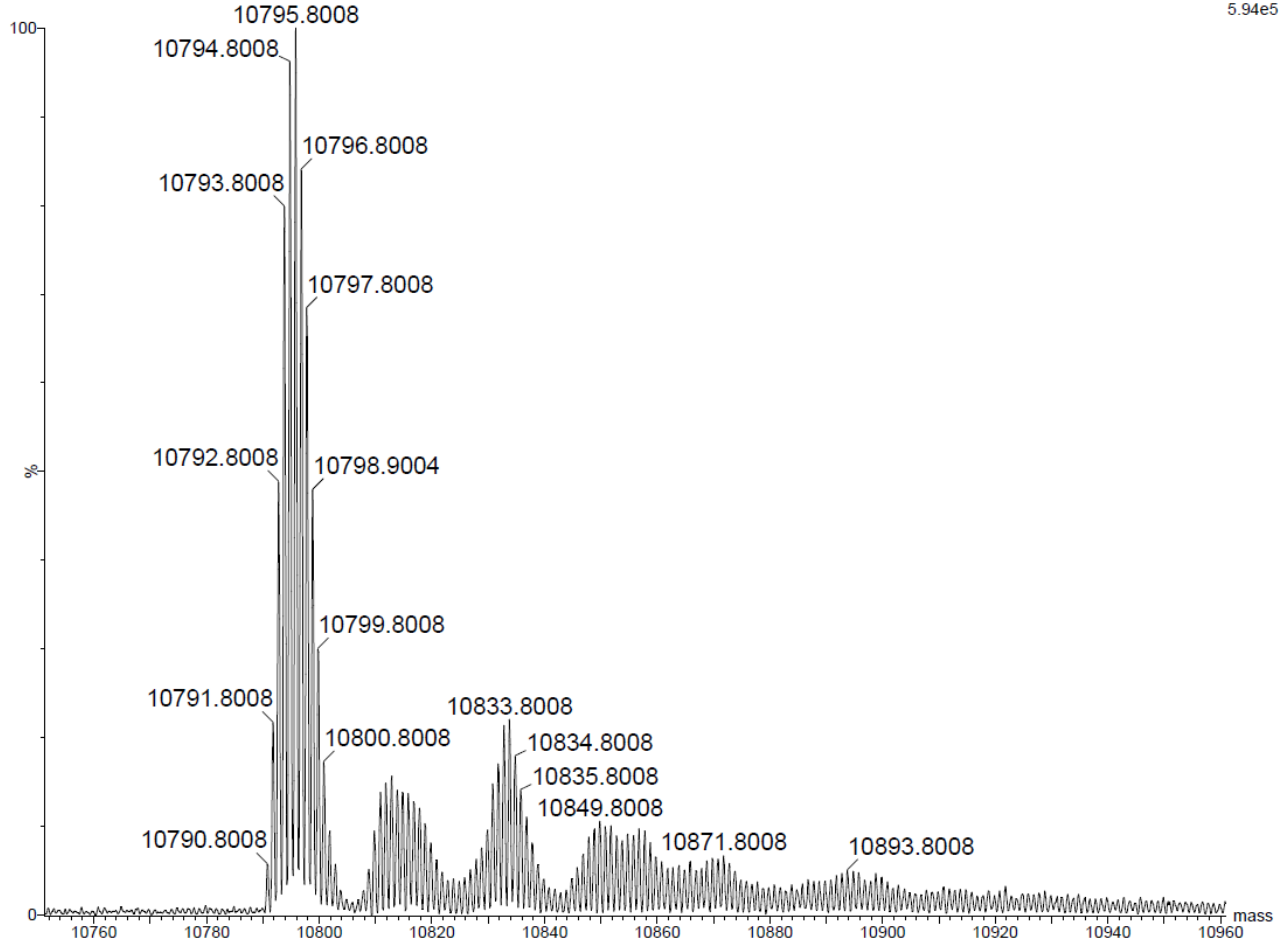


**ScdA5-Dz**

5' – GAG TCC CAT A GG CT **S-cdA**GCT ACA ACG A AAGAC TTG AG 3'; M(calc) 10796.047

221202\_DNA15SA 25 (0.277) Sm (SG, 1x2.00); M1 [Ev-327261, #22] (Gs, 0.040, 758:2000, 0.10, L33, R33); Cm (17:78)

1: TOF MS ES-  
5.94e5

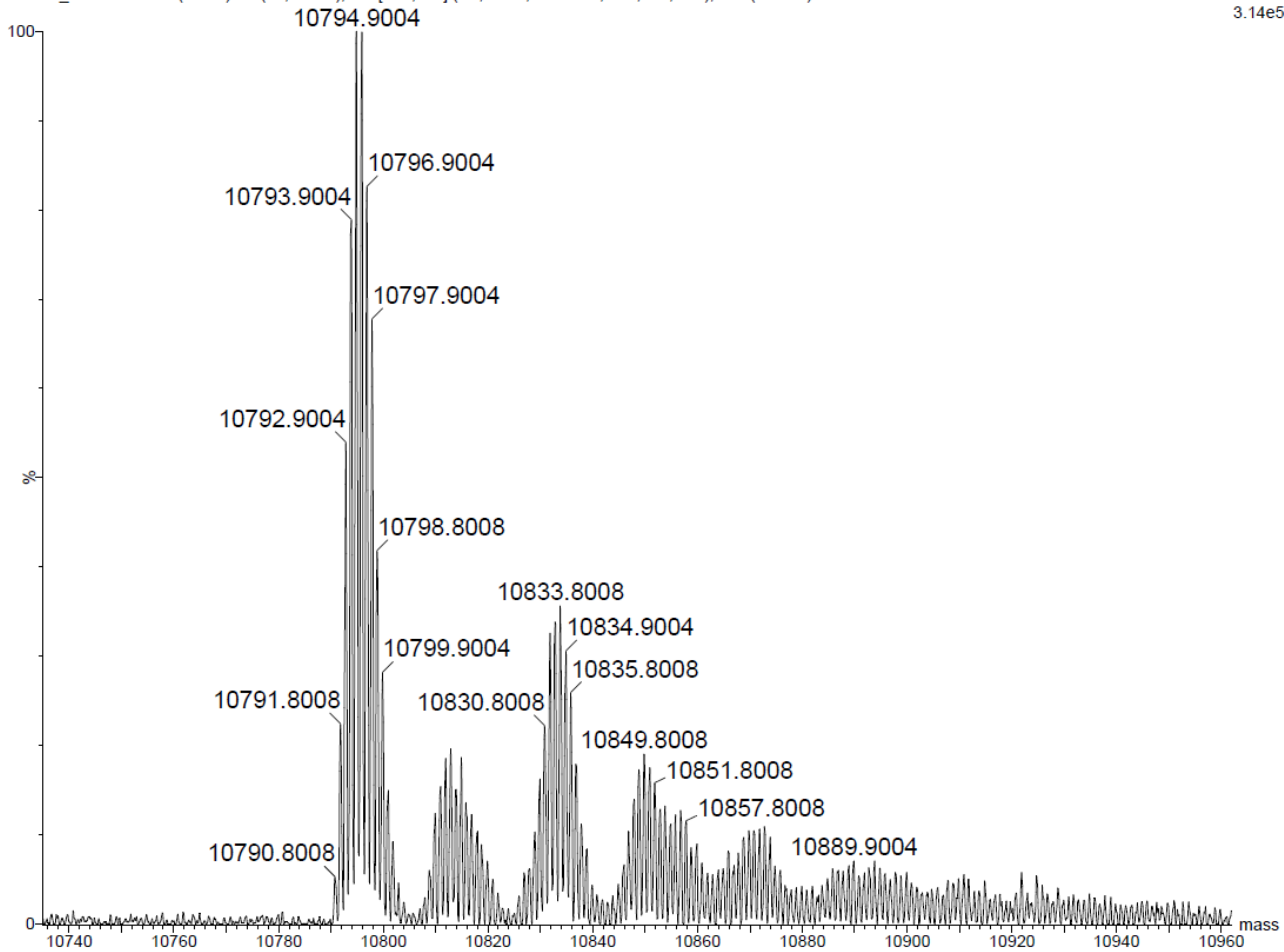


**RcdA15-Dz**

5' – GAG TCC CAT A GG CTA GCTACA ACG **R-cdA** AA GAC TTG AG 3'; M(calc) 10796.047

221202\_DNA25RA 89 (0.917) Sb (25,15.00 ); M1 [Ev0,It19] (Gs,0.040,925:1907,0.10,L33,R33); Cm (88:131)

1: TOF MS ES-  
3.14e5



**ScdA15-Dz**

5' – GAG TCC CAT A GG CTA GCTACA ACG **S-cdA** AA GAC TTG AG 3'; M(calc) 10796.047

221202\_DNA25SA 161 (1.637) M1 [Ev-177214,It16] (Gs,0.040,1113:2000,0.10,L33,R33); Sb (25,15.00 ); Cm (126:197)

1: TOF MS ES-  
1.22e5

