

Supplementary Materials for

6-Gingerol Ameliorates Hepatic Steatosis and Oxidative Stress in High-Fat Diet-Fed Mice through Strengthening LKB1/STRAD/MO25 Complex Stability to activate LKB1/AMPK Pathway

Table S1. Primers used in RT-qPCR analysis.

Gene	Forward primer (5'→3')	Reverse primer (5'→3')
<i>Acaca</i>	TGAAGCTGGACCTAGAAGAGA	AGGCCAAACCATCCTGTAAG
<i>Actb</i>	GTGCTATGTTGCTCTAGACTTCG	ATGCCACAGGATTCCATACC
<i>Cpt1a</i>	CTGCACTCCTGGAAGAAGAAG	CACCCACCACCACGATAAG
<i>Fasn</i>	CTCATTGGTGGTGTGTGGACAT	TTGGAGAGATCCTTCAGCTTTC
<i>Ppara</i>	CTGTCTGGGATGTCACACAAT	CAGGTCGTGTTACAGGTAAG
<i>Pgcl1</i>	CCCAGATCTTCCTGAACCTTGAC	ATTGGTCGCTACACCACTTC
<i>Scd1</i>	AGAAGACATCCGTCCTGAAATG	CAGCAGGACCATGAGAATGAT
<i>Srebflc</i>	AGAAGACATCCGTCCTGAAATG	CAGCAGGACCATGAGAATGAT

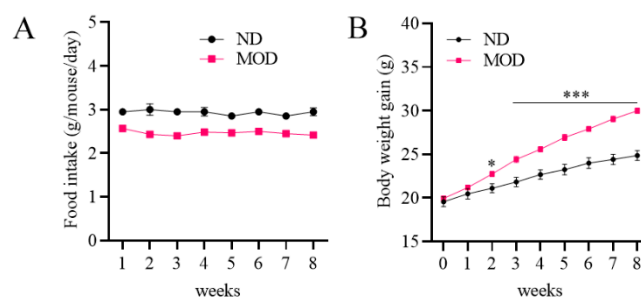


Figure S1. (A) Food intake and (B) Body weight gain during modeling (recorded once a week). * $p < 0.05$ and *** $p < 0.001$, compared with the ND group.

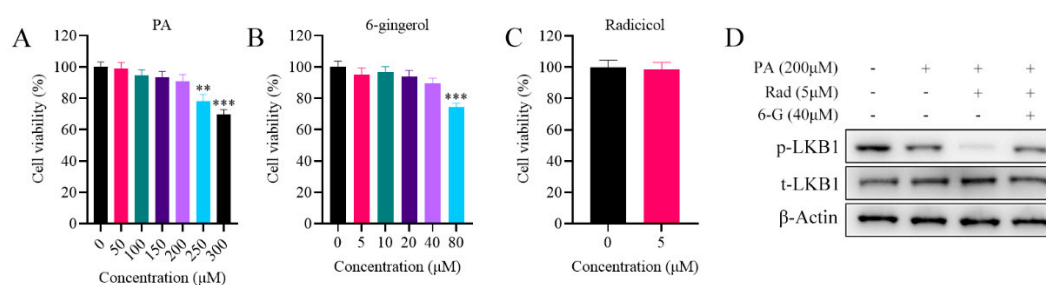


Figure S2. Cell viability under treatments with different concentrations of (A) PA (0μM, 50μM, 100μM, 150μM, 200μM, 250μM, 300μM) and (B) 6-gingerol (0μM, 5μM, 10μM, 20μM, 40μM and 80μM) and (C) 5μM Radicicol. Mean ± SEM. (D) Protein expressions of p-LKB1 and t-LKB1 in HepG2 cells by western blotting. ** $p < 0.01$ and *** $p < 0.001$, compared with the 0μM group.