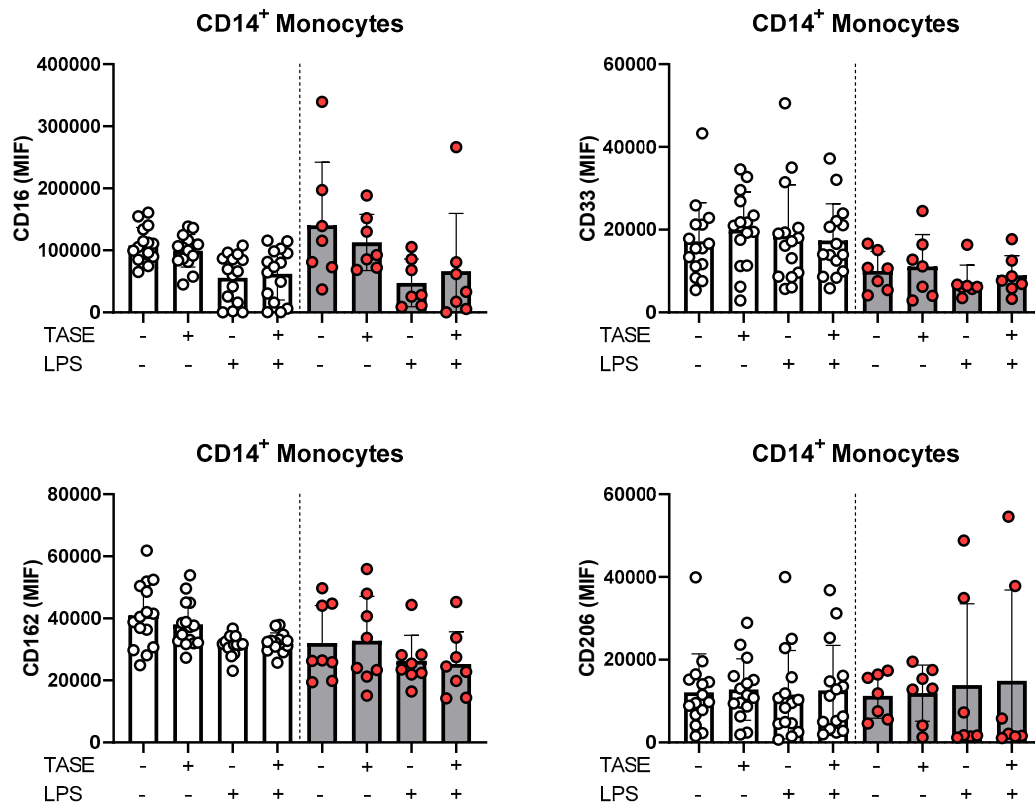


SUPPLEMENTAL INFORMATION

Thiosulfinate-Enriched *Allium sativum* extract exhibits differential effects between healthy and sepsis patients: the implication of HIF-1 α

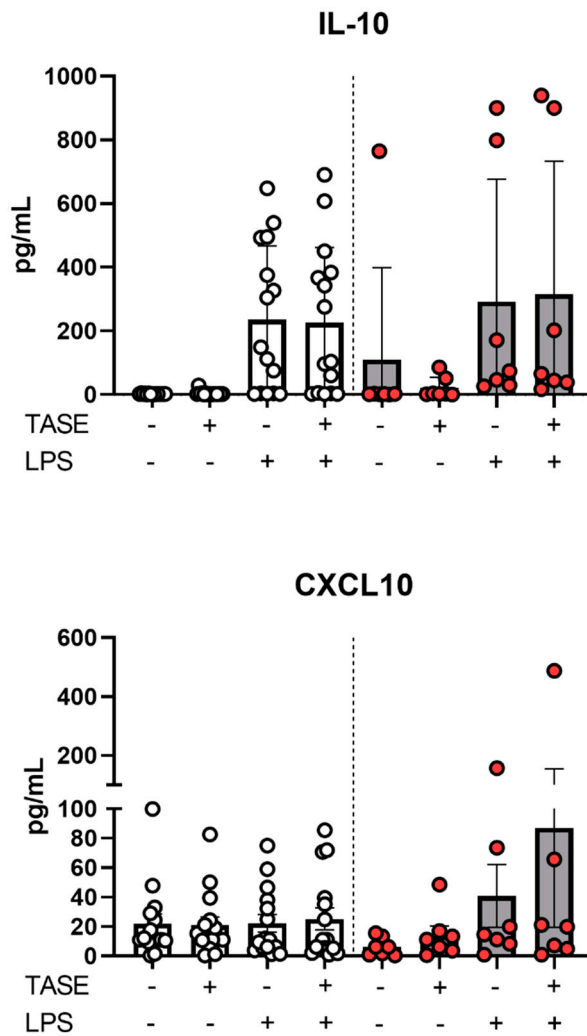
José Avendaño-Ortiz, Francisco Javier Redondo-Calvo, Roberto Lozano-Rodríguez, Verónica Terrón-Arcos, Marta Bergón-Gutiérrez, Concepción Rodríguez-Jiménez, Juan Francisco Rodríguez, Rosa del Campo, Luis Antonio Gómez, Natalia Bejarano-Ramírez, José Manuel Pérez-Ortiz, Eduardo López-Collazo.

Supplementary Figure S1

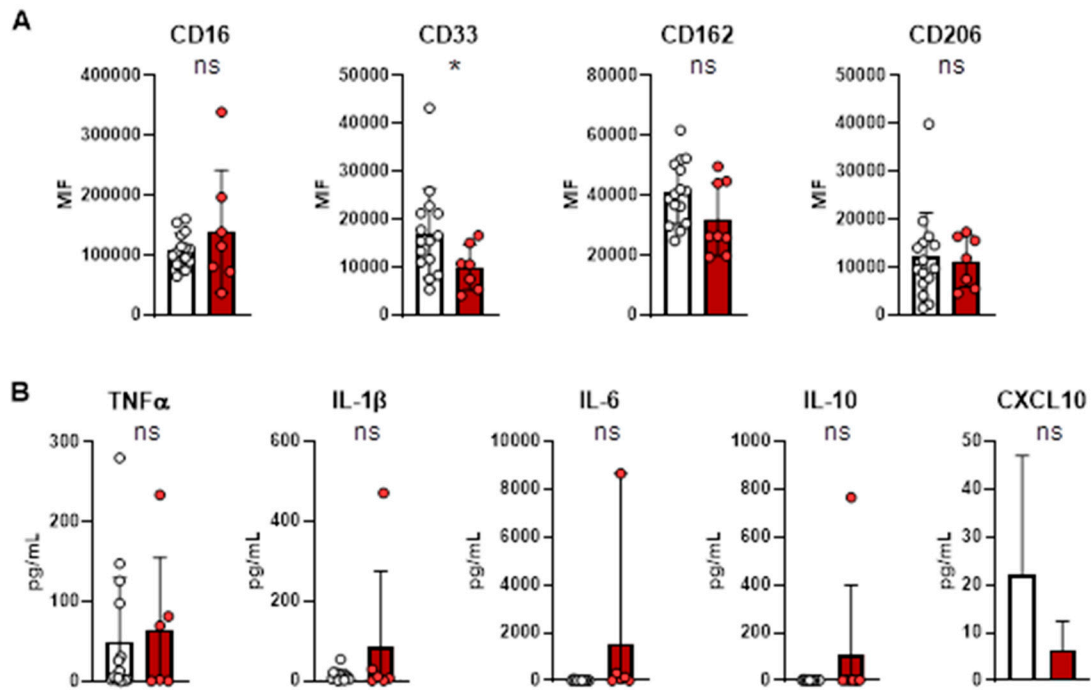


Supplementary Figure S1. Immune markers expression in monocytes from both HV and sepsis patients treated with garlic extract and LPS. Monocytes from HV (n=15) and sepsis (n=7) were stimulated with 10 ng/mL for 16 h in combination or not with 3 µg/mL of thiosulfate-enriched *Allium sativum* extract (TASE) and labelled with cytometry antibodies. Mean intensities of fluorescence of CD16, CD33, CD162 and CD206 on gated CD14⁺ monocytes determined by flow cytometry are shown. Dots show individual values and bars express mean±SD.

Supplementary Figure S2



Supplementary Figure S2. Cytokine production in monocytes from both HV and sepsis patients treated with garlic extract and LPS. Monocytes from HV (n=15) and sepsis (n=7) were stimulated with 10 ng/mL of LPS for 16 h in combination or not with 3 μ g/mL of thiosulfinate-enriched *Allium sativum* extract (TASE). Inflammatory cytokine levels of IL-10 and CXCL10 in cell culture supernatant were measured. Concentrations are shown. *, $p < 0.05$ in paired Wilcoxon t test. Dots show individual values and bars express mean \pm SD.



Supplementary Figure S3. Membrane marker expression and cytokine levels in supernatants of monocytes from both HV and sepsis patients in basal control condition. Monocytes from HV (n=15) and sepsis (n=7) were culture with complete RMPI and leave untreated for 16 h. A. Mean intensities of fluorescence of CD16, CD33, CD162 and CD206 on gated CD14⁺ monocytes determined by flow cytometry are shown. B. Levels of TNFα, IL-1β, IL-6, IL-10 and CXCL10 in cell culture supernatant are shown. *, $p < 0.05$ and ns, non-significant in unpaired t test. Dots show individual values and bars express mean ± SD.