

Figure S1. Effects of Cd^{2+} on apoptosis in mRTEC cells. After being treated with Cd^{2+} (1, 5, 10 μM) for 24 h, the apoptosis of mRTEC cells was determined by flow cytometry staining by Annexin V-FITC/PI.

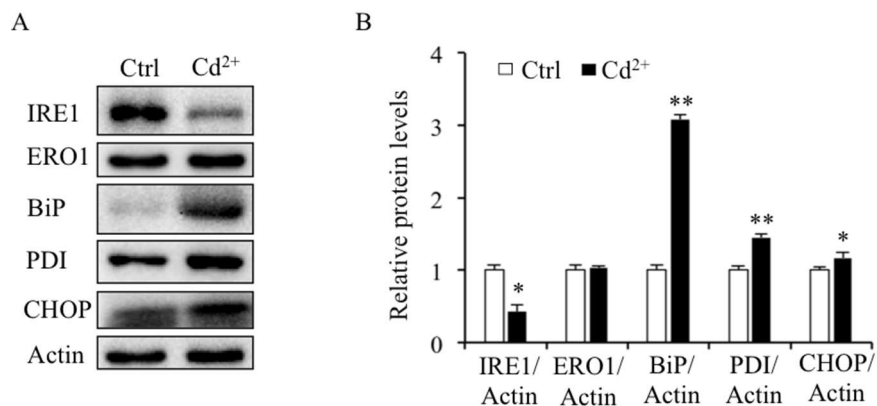


Figure S2. Effects of Cd^{2+} on ER stress. (A) Effect of Cd^{2+} on the expression of ER stress biomarkers IRE1, ERO1, BiP, PDI, and CHOP by Western blotting. (B) Quantification of the relative protein levels was performed using the software Image J. Statistical significance between control and treatments, *, $p < 0.05$, **, $p < 0.01$, using Student's t-test.