

Supplementary information

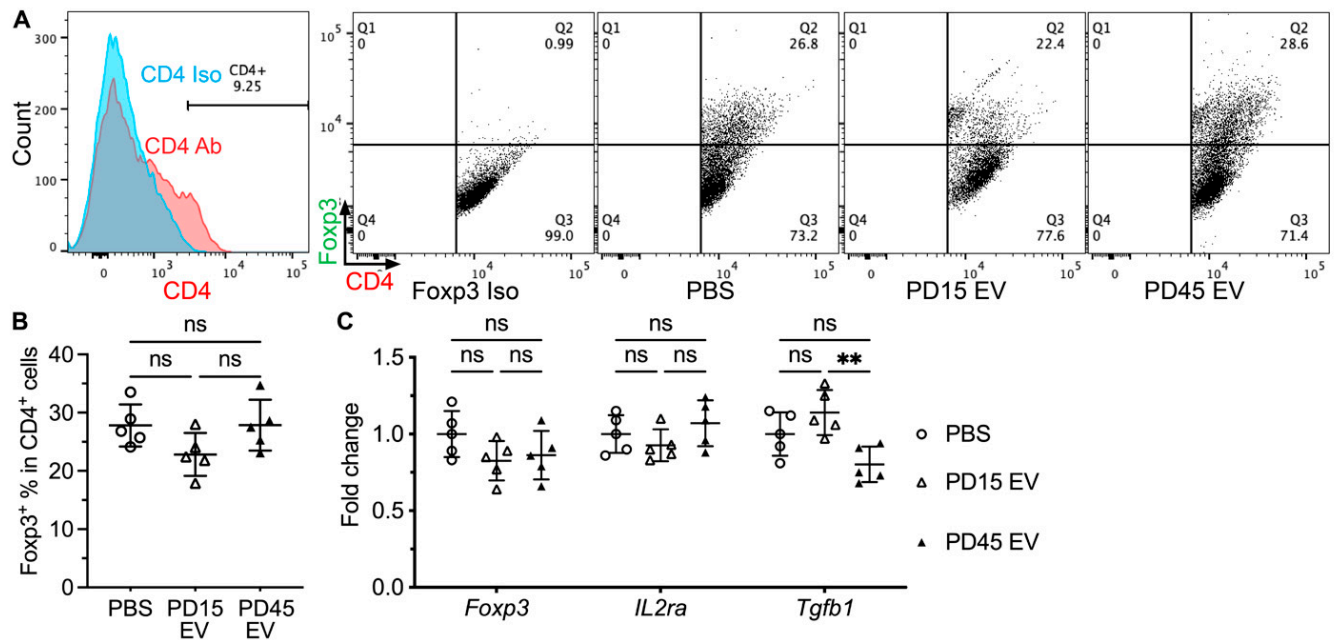


Figure S1. Effects iEVs on splenic Treg cells.

Four-month-old female NOD.B10.H2^b mice were IV injected with PBS, PD15 iEVs, or PD45 iEVs twice a week for two weeks. Splenocytes were collected at two weeks after last injection.

A,B: Percentages of Foxp3⁺ cells in CD4⁺ splenocytes were examined with flow cytometry.

C: The mRNA levels of markers for Treg cells in spleen were examined with qRT-PCR.

N = 5. ns: not significant. **: p < 0.01.