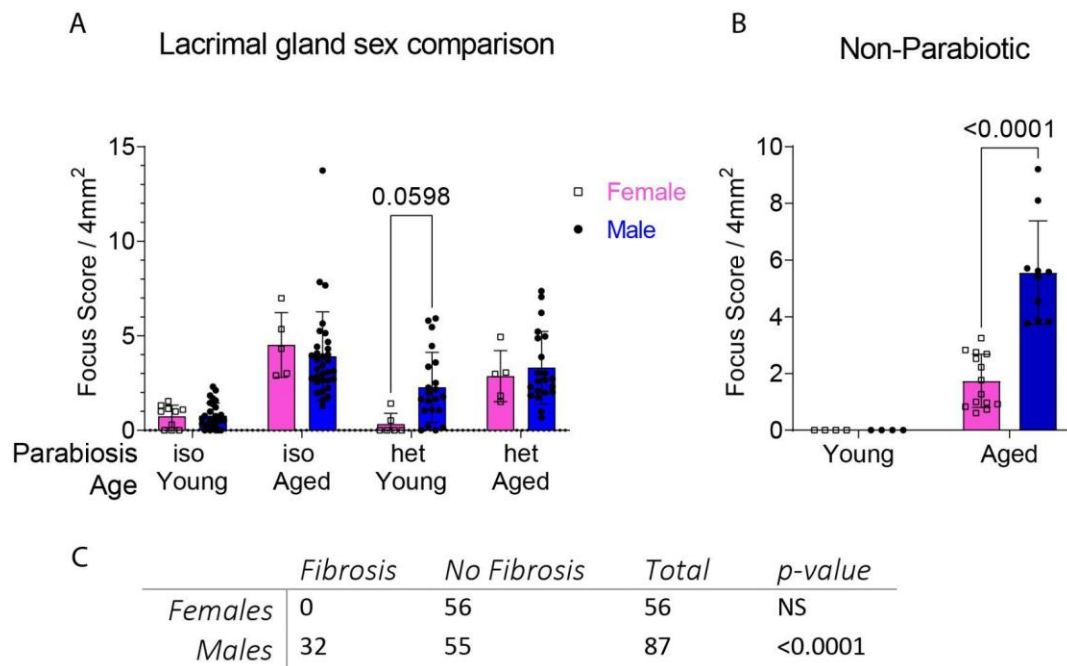
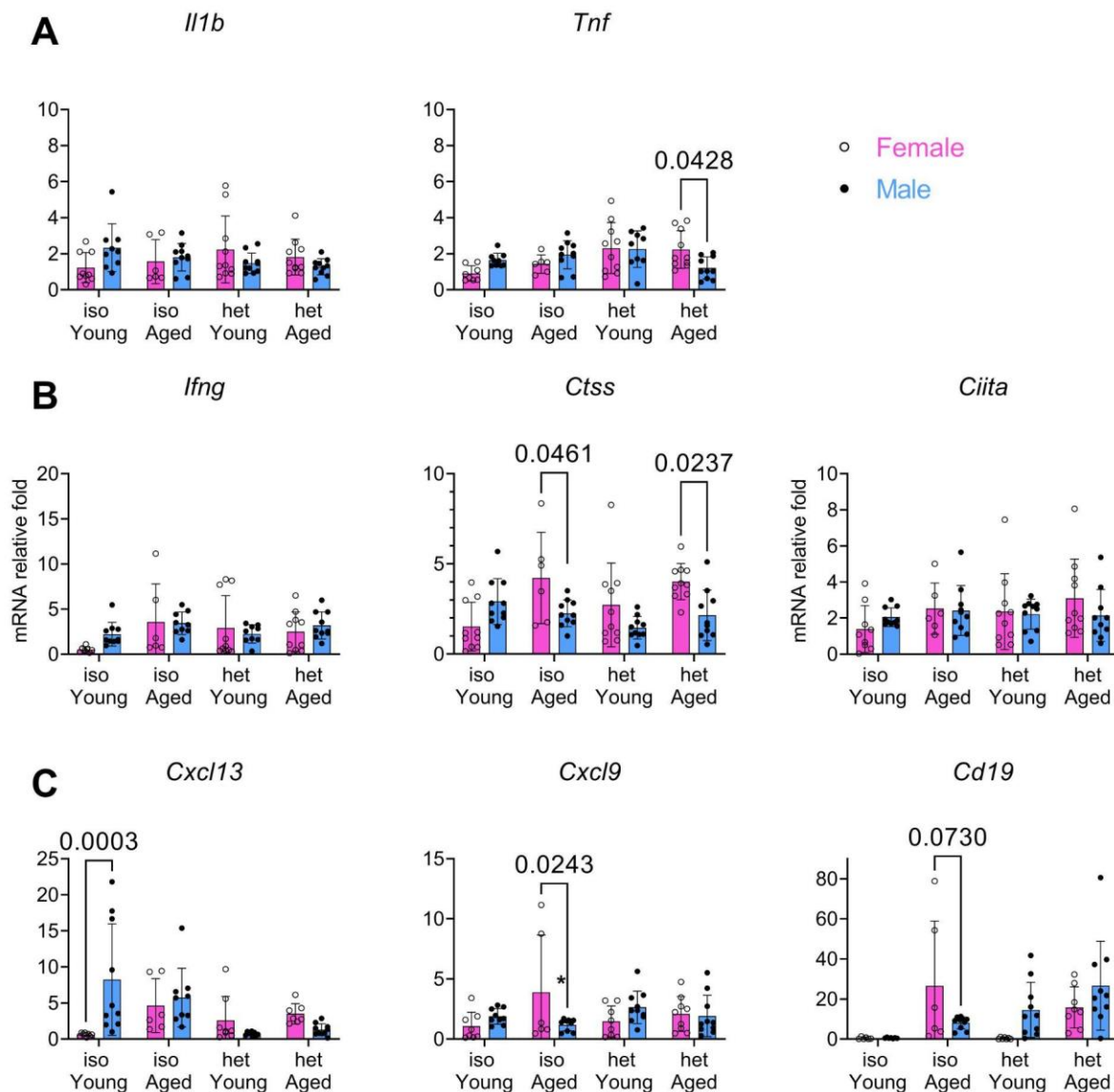


## Supplemental Figures



**Supplemental Figure S1: Sex differences in lacrimal glands in both parabolic and non-parabolic models.** A) Sex differences in parabolic lacrimal glands. iso = isochronic pairing (young to young or aged to aged). het = heterochronic pairing (young to aged). B) Focus score for non-parabolic mice. Young are PepBoy, aged are B6. Pink bars indicate female mice, blue bars indicate male mice. Each dot represents average of two levels per lacrimal gland per mouse. Two-way ANOVA followed by post hoc Šidák multiple comparisons test. C) Chi-square analysis of frequency of fibrosis in aged lacrimal glands. Glands were pooled from non-parabolic and parabolic grading. Fisher's exact test.



**Supplemental Figure S2: Sex differences in lacrimal gland fold expression of inflammatory and B cell related markers.** A) Broad inflammatory markers. B) T cell related markers. C) B cell related markers. Each dot represents one lacrimal gland per mouse. Pink bars indicate female mice, blue bars indicate male mice. Two-way ANOVA followed by post hoc Šídák multiple comparisons test. iso = isochronic (young-young or aged-aged) pairing. het = heterochronic (young-aged) pairing.