

COVID-19 and cancer diseases – the potential of *Coriolus versicolor* mushroom to combat global health challenges

Supplementary materials – Chemical structures of the main active CV compounds.

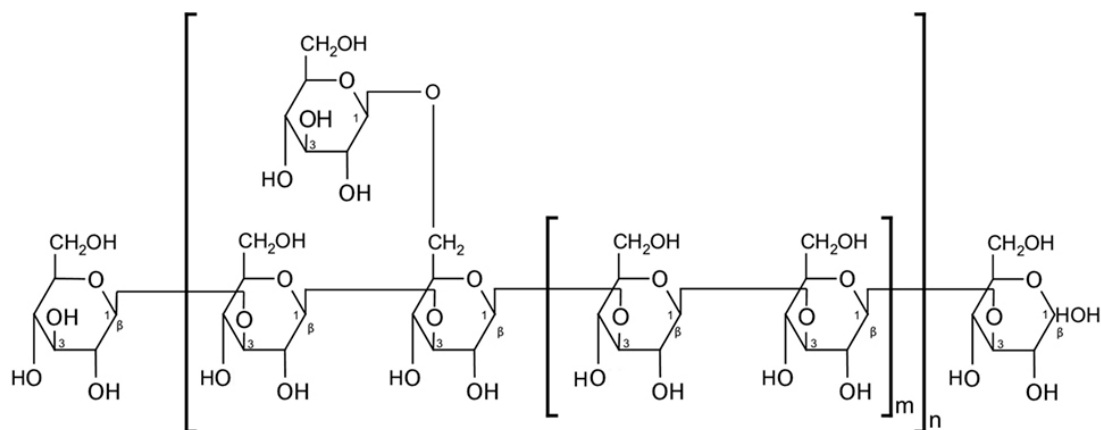


Figure S1. Polysaccharopeptide (PSP). Figure replicated from Wan et al. (24).

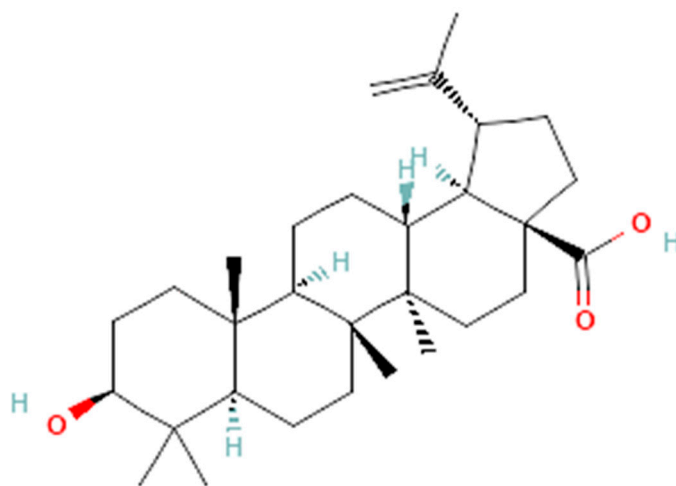


Figure S2. Betulinic acid. Figure replicated from (25).

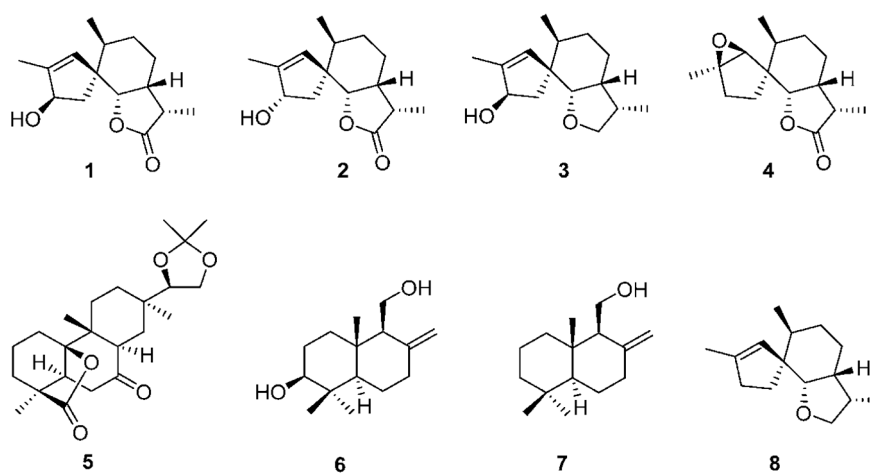


Figure S3. Terpenoids: Tramspiroids A–D (1–4), rosenonolactone 15,16-acetonide (5), and the drimane sesquiterpenes isodrimenediol (6) and funatrol D (7). Figures replicated from Habtemariam (26).

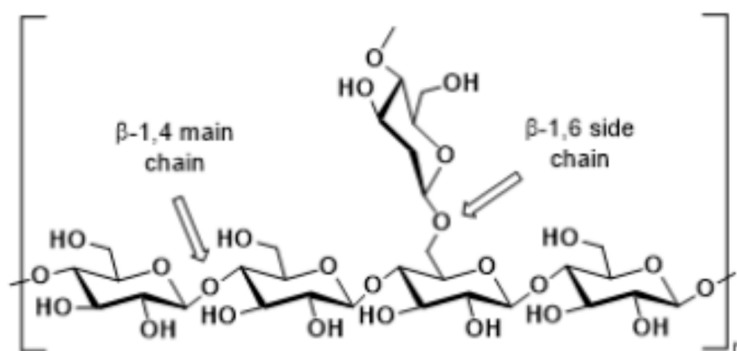


Figure S4. Polysaccharide krestin (PSK). Figure replicated from Sivanesan et al. (27).

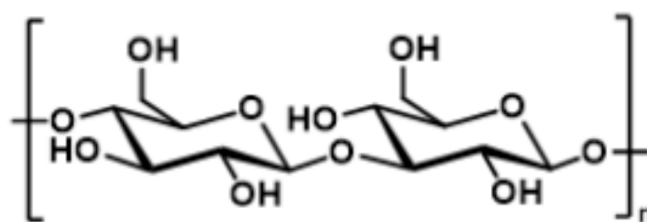


Figure S5. β -1-3-D glucan (backbone). Figure replicated from Sivanesan et al. (27).