

Figure S1. *APP* RNA variants and Age correlation. Dispersion diagram showing no correlation between Age and circAPP (hsa_circ_0007556) and *APP* mRNA expression levels.

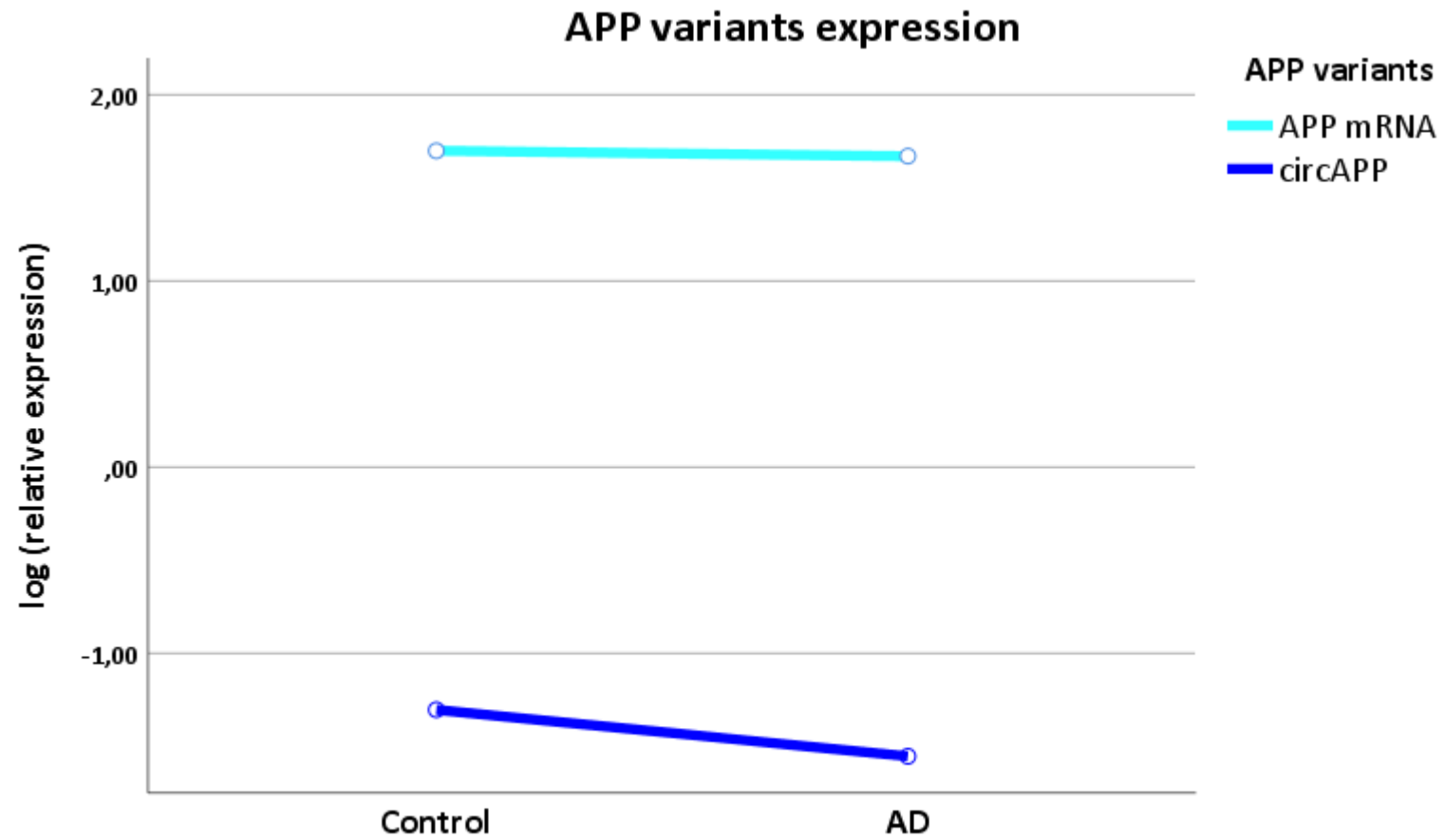


Figure S2. Representation of the proportional expression between controls and AD cases of the log(relative expression) of the two *APP* variants

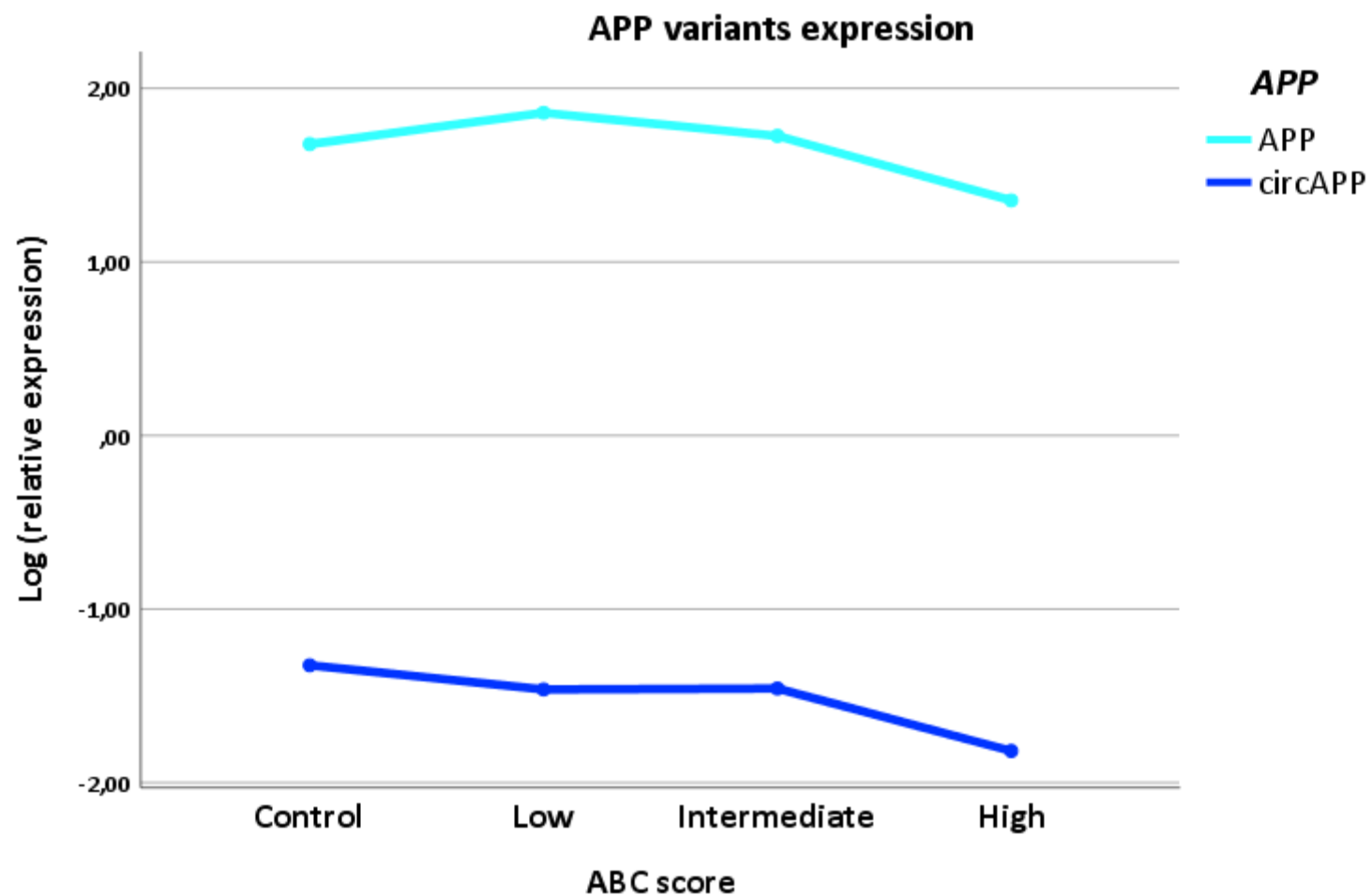
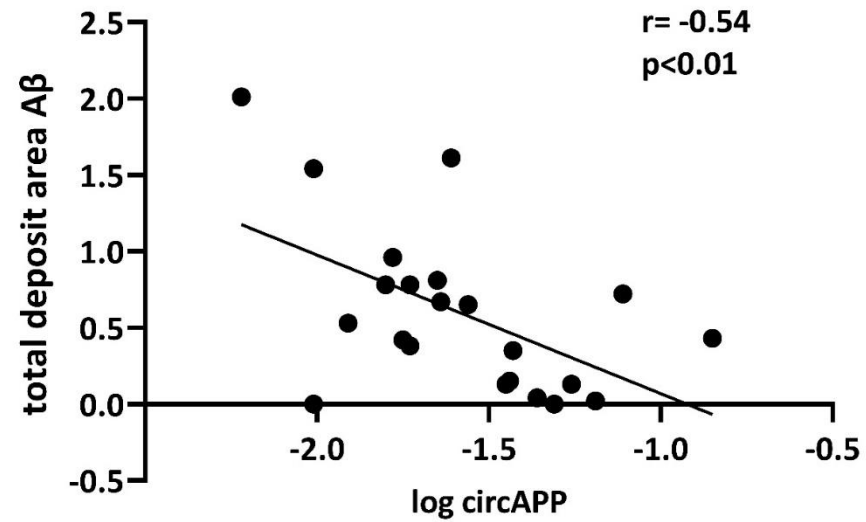


Figure S3. Representation of the proportional expression between controls and AD neuropathological stages, according to the ABC score of the log(relative expression) of the two *APP* variants

A



B

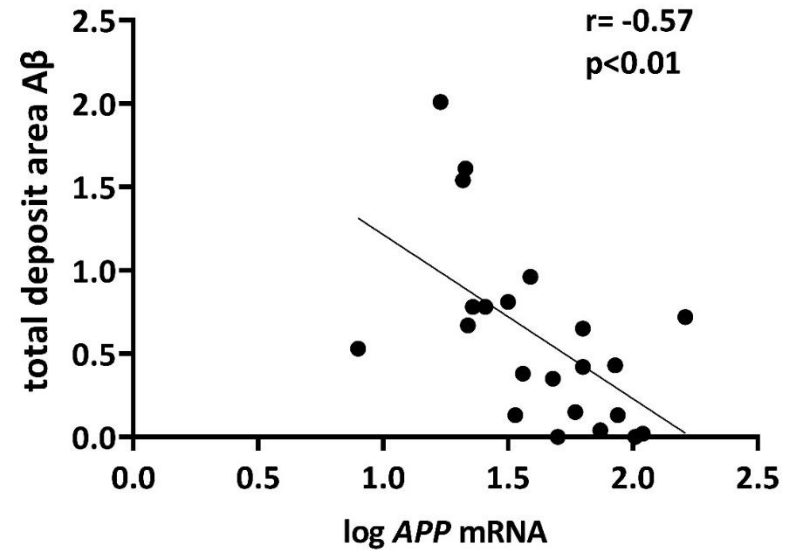
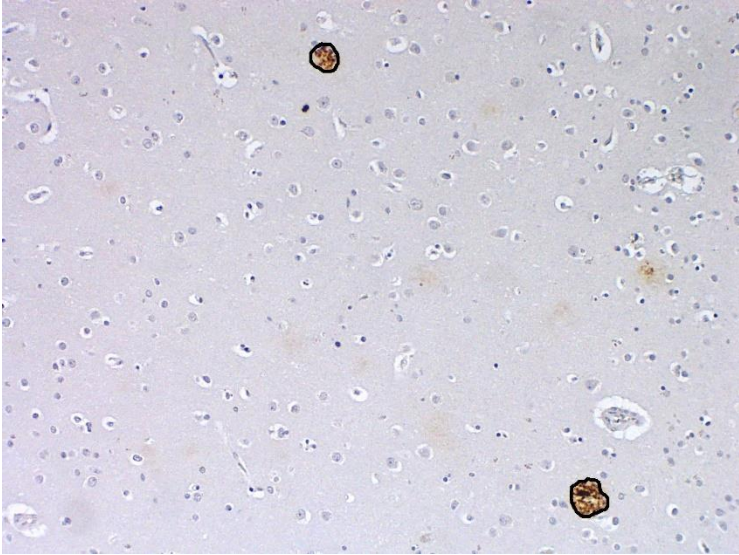
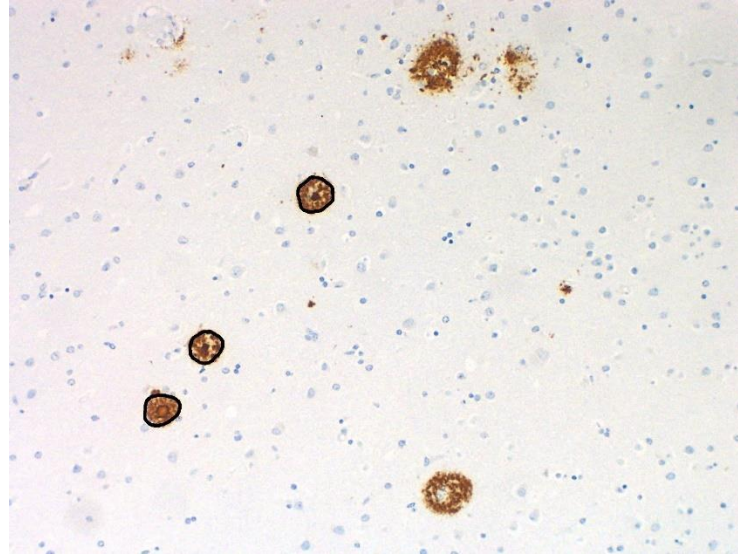


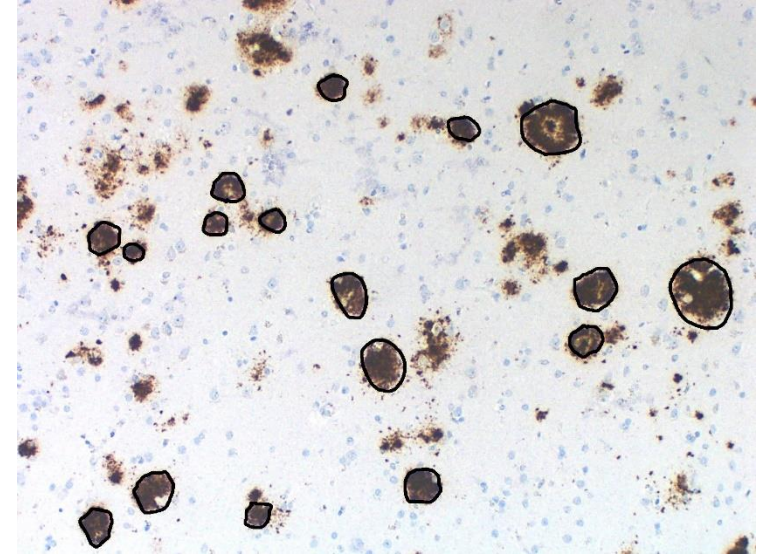
Figure S4. *APP* RNA variants and Aβ deposits correlation. Dispersion diagram showing negative correlation between global average area of Aβ deposits and circAPP (hsa_circ_0007556) and *APP* mRNA expression levels.



Low



Intermediate



High

ABC score

Figure S5. Quantitative assessment of A β deposits. The images show sections of the entorhinal cortex after immunostaining with a mouse monoclonal anti- A β antibody. A β plaques are surrounded by a black line. The area enclosed by the black line represents the area of the A β plaque measured with the ImagenJ software.