

Supporting information

Myxinidin-Derived Peptide against Biofilms Caused by Cystic Fibrosis Emerging Pathogens

Rosa Bellavita ^{1,†}, Angela Maione ^{2,†}, Simone Braccia ¹, Marica Sinoca ², Stefania Galdiero ¹, Emilia Galdiero ² and Annarita Falanga ^{3,*}

¹ Department of Pharmacy, School of Medicine, University of Naples 'Federico II',
Via Domenico Montesano 49, 80131 Naples, Italy

² Department of Biology, University of Naples 'Federico II', Via Cinthia, 80126 Naples, Italy

³ Department of Agricultural Sciences, University of Naples 'Federico II', Via dell' Università 100,
80055 Portici, Italy

* Correspondence: annarita.falanga@unina.it; Tel.: +39-081-253-4525

† These authors contributed equally to this work.

Table of contents

1. HPLC chromatograms and analytical data of peptides **WMR-1, WMR-2, WMR-3, WMR-4, WMR-5** (Figures S1–S5)

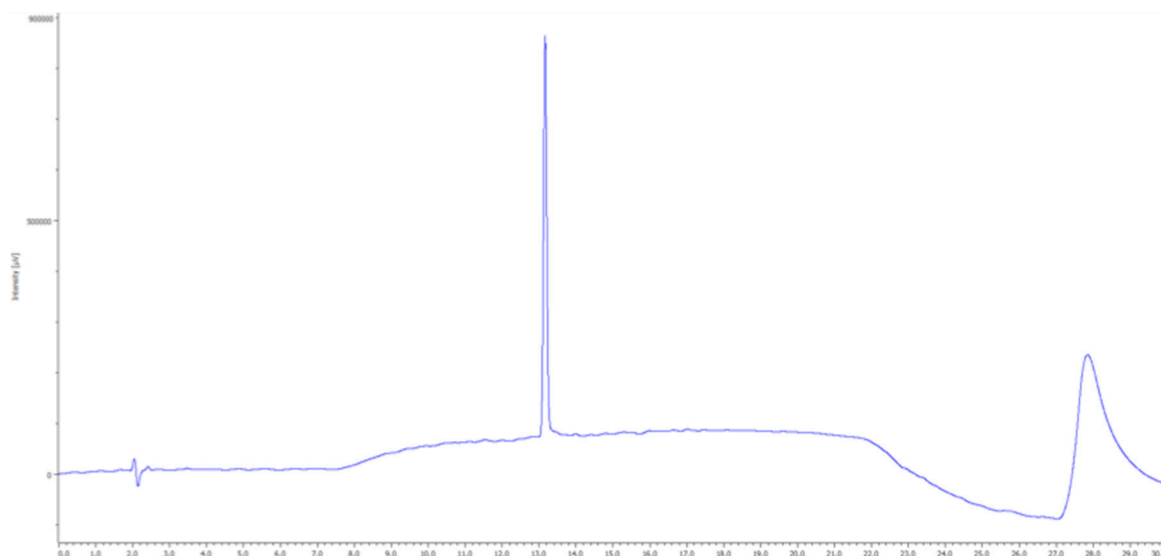


Figure S1. Chromatogram of peptide WMR-1 obtained by an analytical Jasco LC-NetII/ADC) equipped with a Phenomenex Kinetex C18 column (150 mm × 4.6 mm, 5 μm, 100 Å), and monitored by UV detection at 220 nm. [linear gradient 5–70% MeCN (0.1% TFA) in H₂O (0.1% TFA) over 20 min, flow rate of 1 mL/min]. Calculated mass: 1759.08. Found mass: $[M+2H]^+/2 = 880.61$.

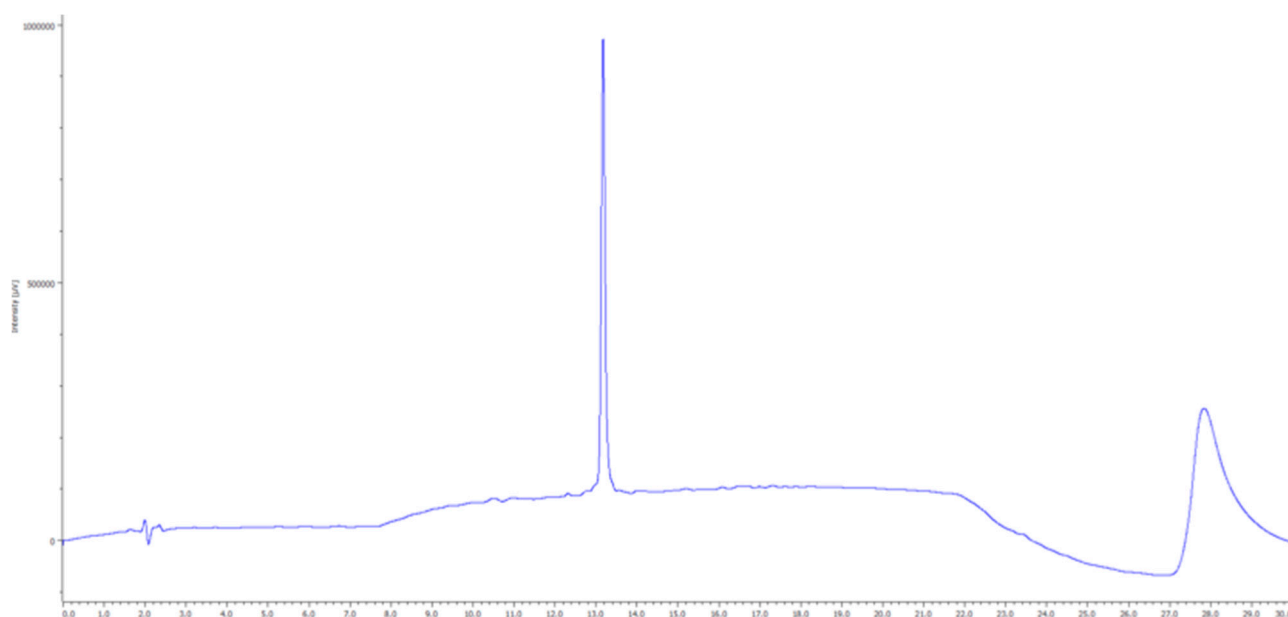


Figure S2. Chromatogram of peptide WMR-2 obtained by an analytical Jasco LC-NetII/ADC) equipped with a Phenomenex Kinetex C18 column (150 mm × 4.6 mm, 5 μm, 100 Å), and monitored by UV detection at 220 nm. [linear gradient 5–70% MeCN (0.1% TFA) in H₂O (0.1% TFA) over 20 min, flow rate of 1 mL/min]. Calculated mass: 1759.08. Found mass: $[M+2H]^+/2 = 880.61$.

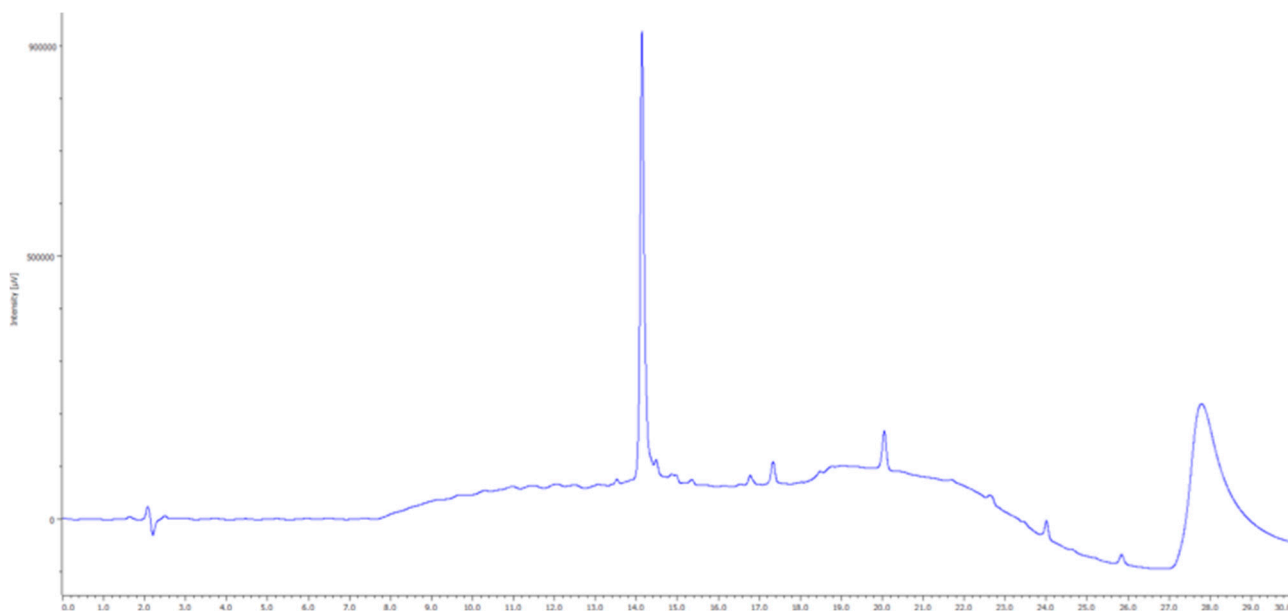


Figure S3. Chromatogram of peptide WMR-3 obtained by an analytical Jasco LC-NetII/ADC) equipped with a Phenomenex Kinetex C18 column (150 mm × 4.6 mm, 5 μm, 100 Å), and monitored by UV detection at 220 nm. [linear gradient 5–70% MeCN (0.1% TFA) in H₂O (0.1% TFA) over 20 min, flow rate of 1 mL/min]. Calculated mass: 1788.19. Found mass: $[M+2H]^+/2 = 895.95$.

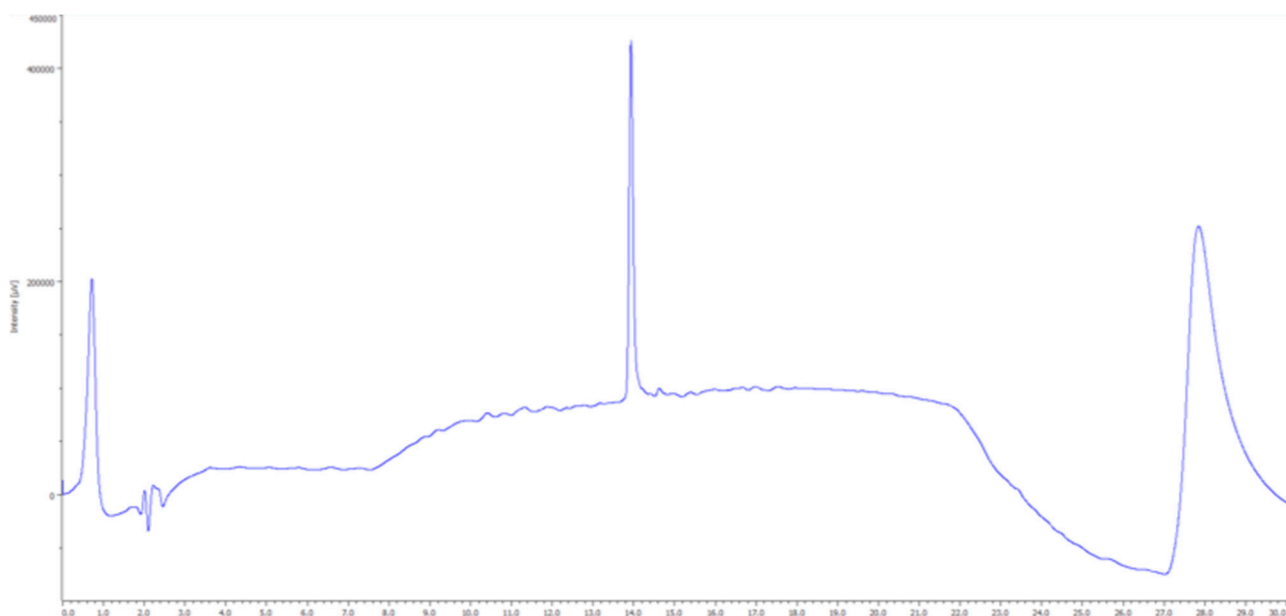


Figure S4. Chromatogram of peptide WMR-4 obtained by an analytical Jasco LC-NetII/ADC) equipped with a Phenomenex Kinetex C18 column (150 mm × 4.6 mm, 5 μm, 100 Å), and monitored by UV detection at 220 nm. [linear gradient 5–70% MeCN (0.1% TFA) in H₂O (0.1% TFA) over 20 min, flow rate of 1 mL/min]. Calculated mass: 1788.19. Found mass: $[M+2H]^+/2 = 895.95$.

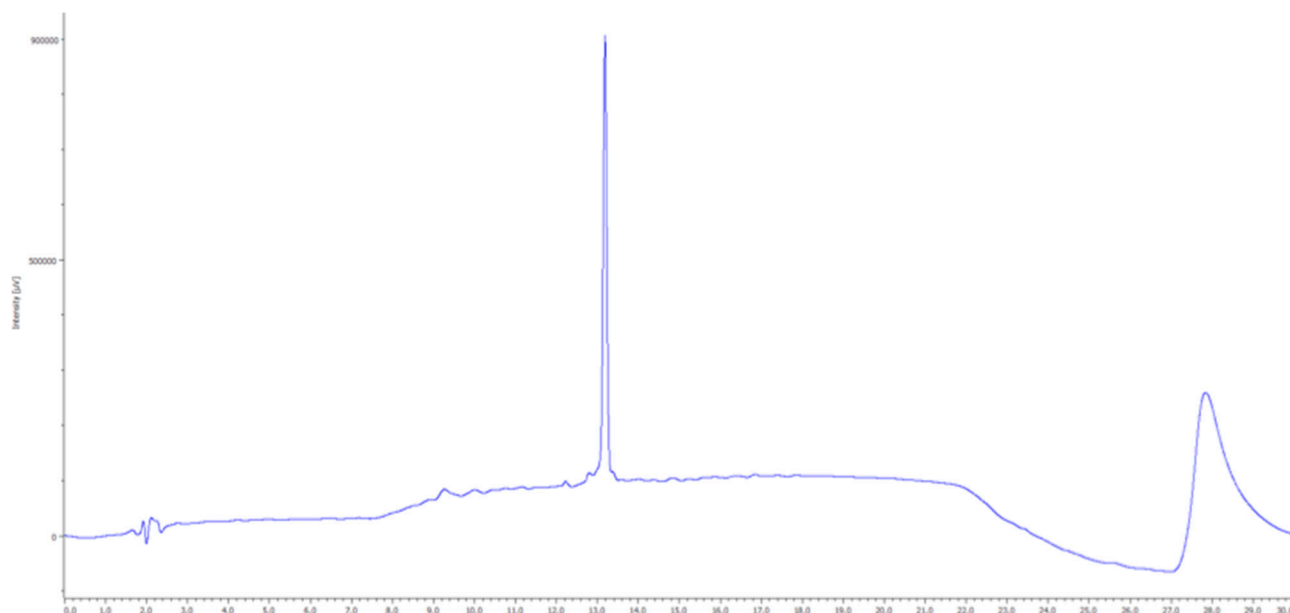


Figure S5. Chromatogram of peptide WMR-5 obtained by an analytical Jasco LC-NetII/ADC) equipped with a Phenomenex Kinetex C18 column (150 mm × 4.6 mm, 5 μm, 100 Å), and monitored by UV detection at 220 nm. [linear gradient 5–70% MeCN (0.1% TFA) in H₂O (0.1% TFA) over 20 min, flow rate of 1 mL/min]. Calculated mass: 1717.04 Found mass: $[M+2H]^+/2 = 859.96$.