

Supplementary materials

Cell viability assay

Flow cytometry was performed to determine cell surface PD-L1 expression by 30-min incubation on ice with APC-anti-human PD-L1 (#393610, BioLegend, 1:200) and corresponding isotype control mAbs APC-anti Mouse IgG1 (#400122, BioLegend, 1:200). The cells were washed with PBS containing 2% BSA and 1mM EDTA and analysis with a Gallios flow cell counter (Beckman Coulter, Inc., Brea, CA, USA).

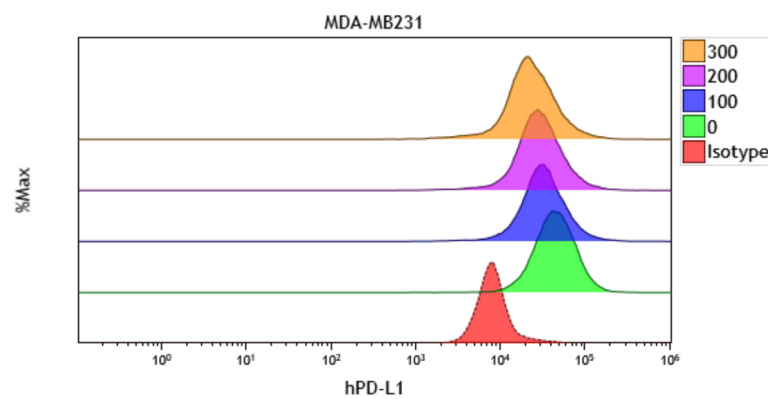


Figure S1. Effects of RGE on human PD-L1 expression by flow cytometry. MDA-MB231 cells (5×10^5 cells/ml) were treated with RGE at various concentrations (0–300 $\mu\text{g/mL}$) for 24 h and human PD-L1 expression was detected by flow cytometry.