



Figure S1. Amino acids alignment for PRR proteins in *Medicago truncatula* and *Arabidopsis thaliana*. The PR domain and CTT domain were marked in lines.

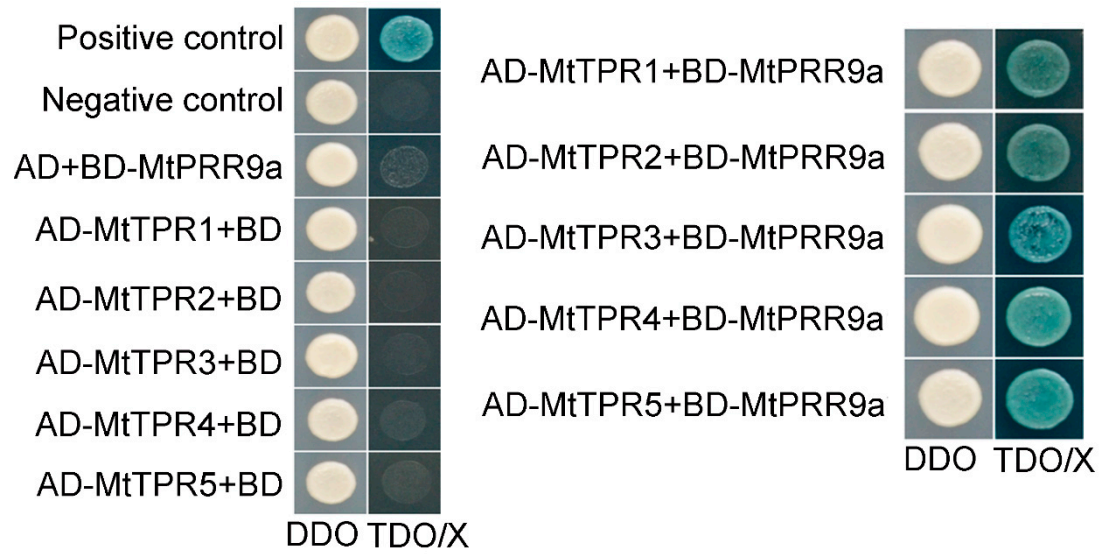


Figure S2. Identification of the interactions between MtPRR9a and MtTPR1-5 by Y2H. All transformants can grow on DDO medium. Yeast colonies that were able to grow on TDO with X- α -Gal and displayed blue coloration confirmed the protein-protein interaction.

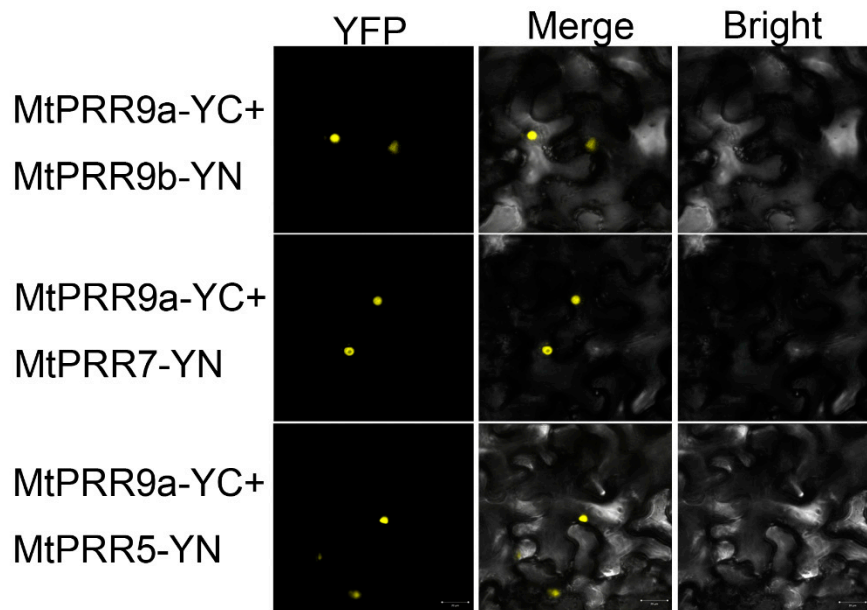


Figure S3. BiFC assays indicated that the MtPRR9a interacted with MtPRR9b, 7 and 5 in tobacco leaves.