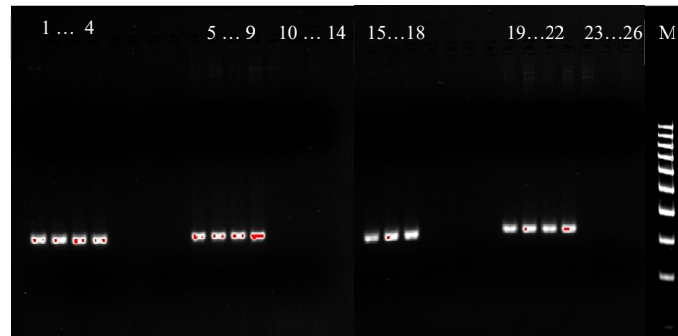


**Figure S1- Amplifying the SCN 18S ribosomal gene from DNA extracted from the roots**



**Figure S1.** PCR amplification of 18S ribosomal RNA (250 bp band) in SCN, infected plants and Control at 5 and 10 dpi. Lanes 1 to 4 and Lane 15 to 18 are SCN. Lanes 5 to 9 are infected plants at 5 dpi. Lane 10-14 are Control plants at 5 dpi. Lane 19 to 22 are infected plants at 10 dpi. Lane 23 to 26 are control plants at 10 dpi.