

Figure S1. Rescue experiment 1.

A, Rescue Phenotype of zebrafish embryos (48 hpf) by co-injection with Cas13d mRNA, gRNAs and flounder shisa-2 mRNA (Abnormal (weak): Normal = 65(8):33); B, Control, Knockdown Phenotype of zebrafish embryos (48 hpf) after shisa-2 knockdown by co-injection with Cas13d mRNA and gRNAs (Abnormal (weak): Normal: = 19(1): 2).

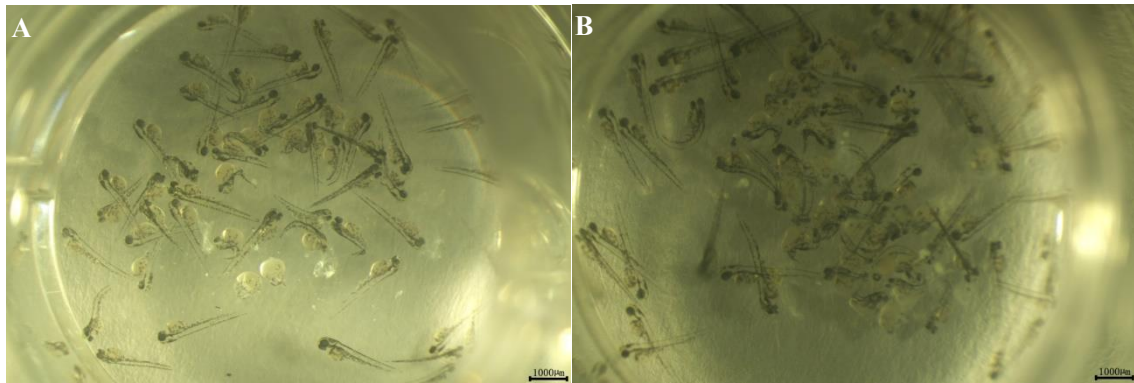


Figure S2. Rescue experiment 2.

A, Rescue Phenotype of zebrafish embryos (48 hpf) by co-injection with Cas13d mRNA, gRNAs and flounder shisa-2 mRNA, (Abnormal (weak): Normal: =15(6): 45); B, Control, Phenotype of zebrafish embryos (48 hpf) after shisa-2 knockdown by co-injection with Cas13d mRNA and gRNAs, (Abnormal (weak): Normal: = 39(4): 48).