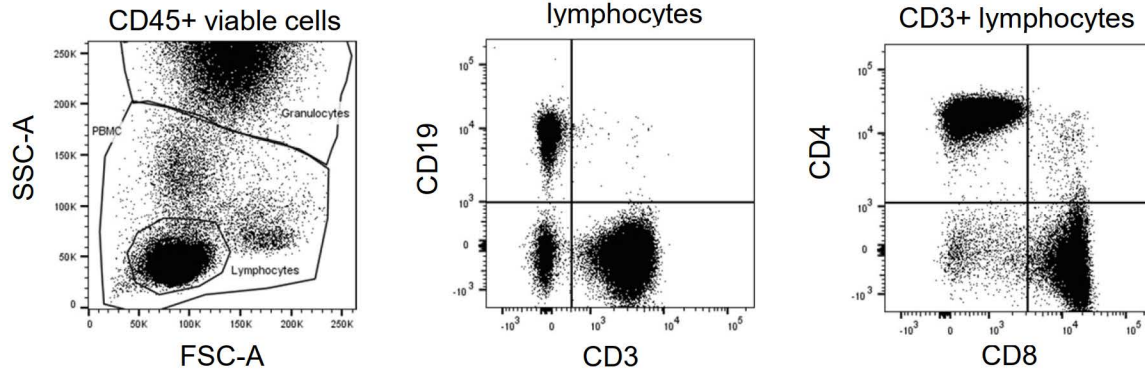


Tube 1



Tube 2

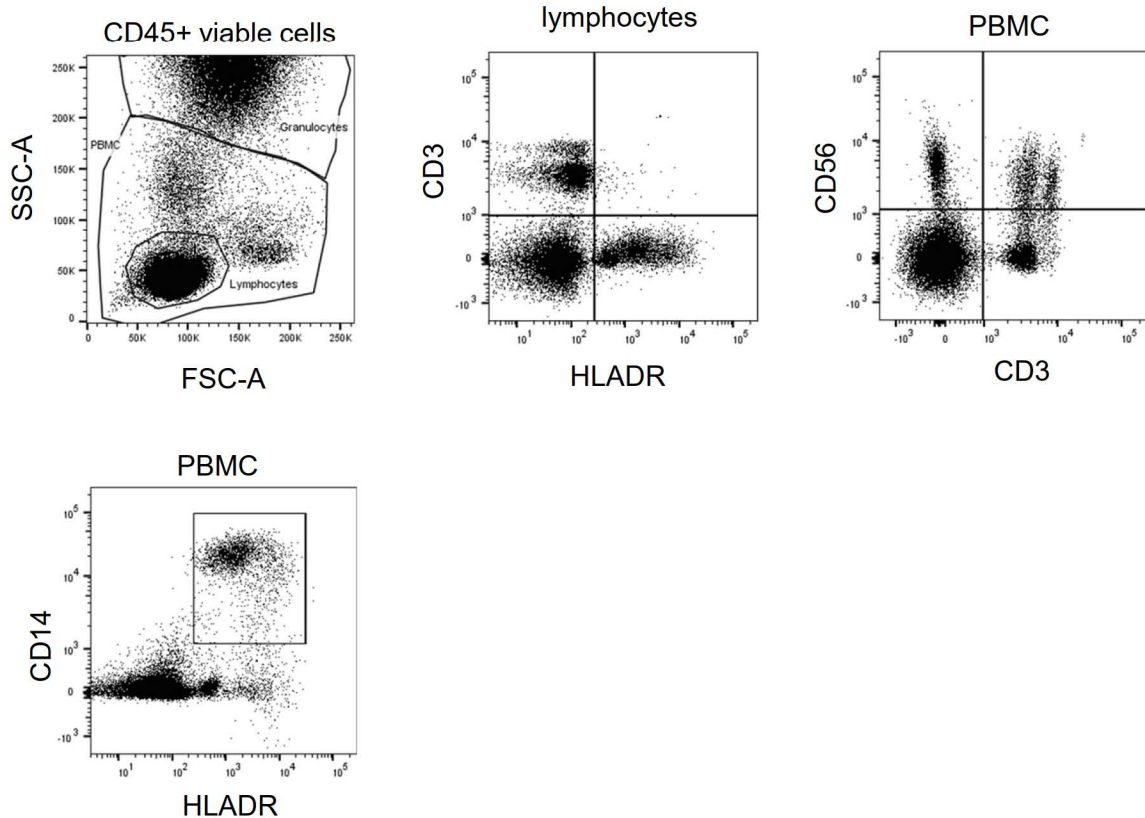


Figure S1. Gating strategy of analyzed peripheral immune cell subsets evaluated by FACS analysis

A hierarchical gating strategy identified single cells using FSC-A versus FSC-H dot plot. Dead cells and non-leukocytes were excluded with fixable Viability Dye (VD) and gating on CD45. Lymphocytes, peripheral blood mononuclear cells and granulocytes were gated based on SSC-A versus FSC-A. Subsequent gating analysis allowed identification of the following subtypes: CD19+ B cells, CD3+ T cells, CD4+ and CD8+ T cells, CD3+ CD56+ NKT cells, CD3+ HLADR+ activated T cells, CD3-CD56+ NK cells and CD14+HLADR+ monocytes.