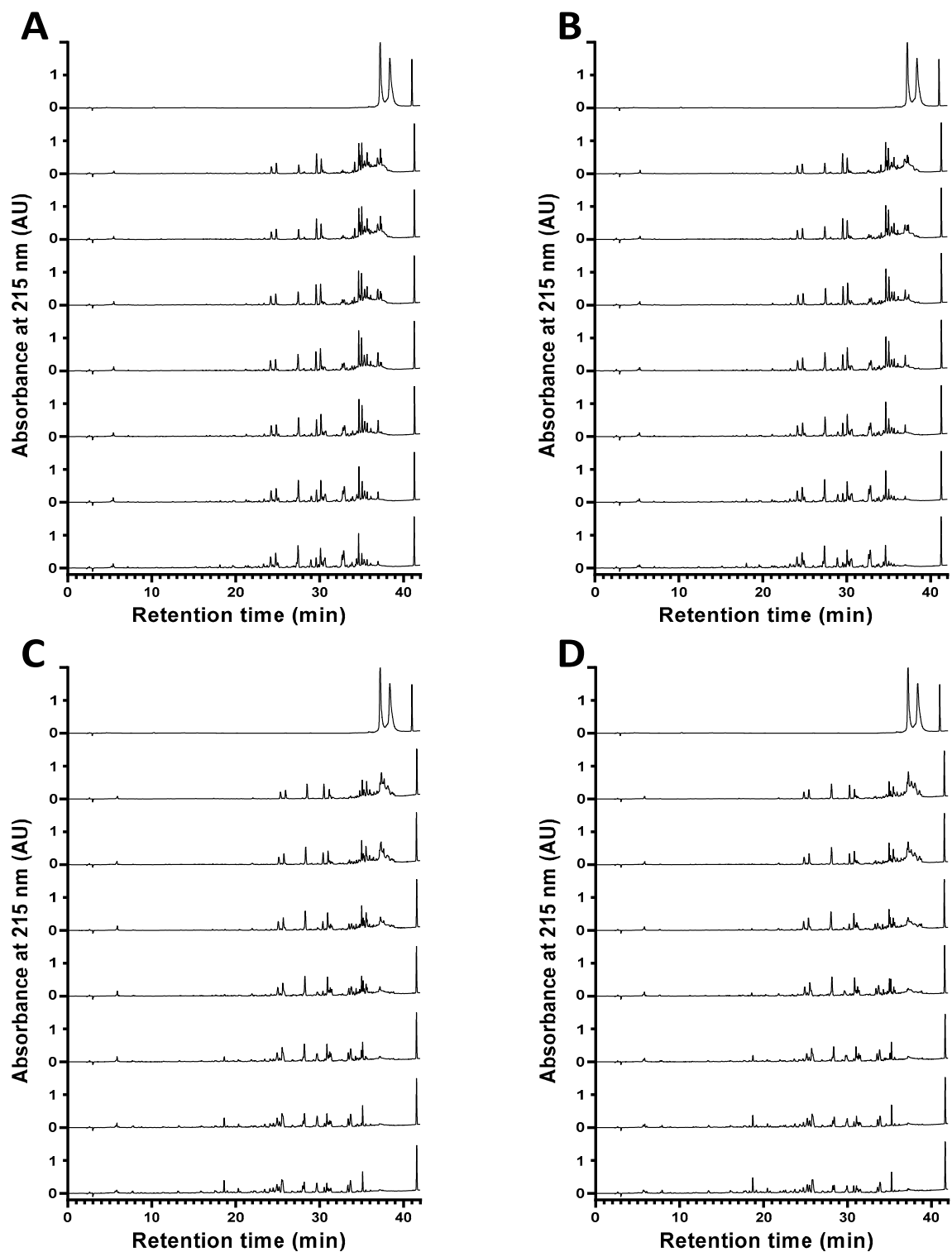


(1) Bovine hemoglobin



(2) *Human hemoglobin*

Figure S1: Chromatographic hydrolysis profiles of bovine hemoglobin (1) and human hemoglobin (2) at 215 nm by RP-UPLC, analyzed by C4 type column for different initial concentrations of bovine and human hemoglobin (pH 3.5, 23°C, E/S = 1/11) (A) 1%, (B) 2% diluted by 2, (C) 8% diluted by 8, (D) 10% diluted by 10