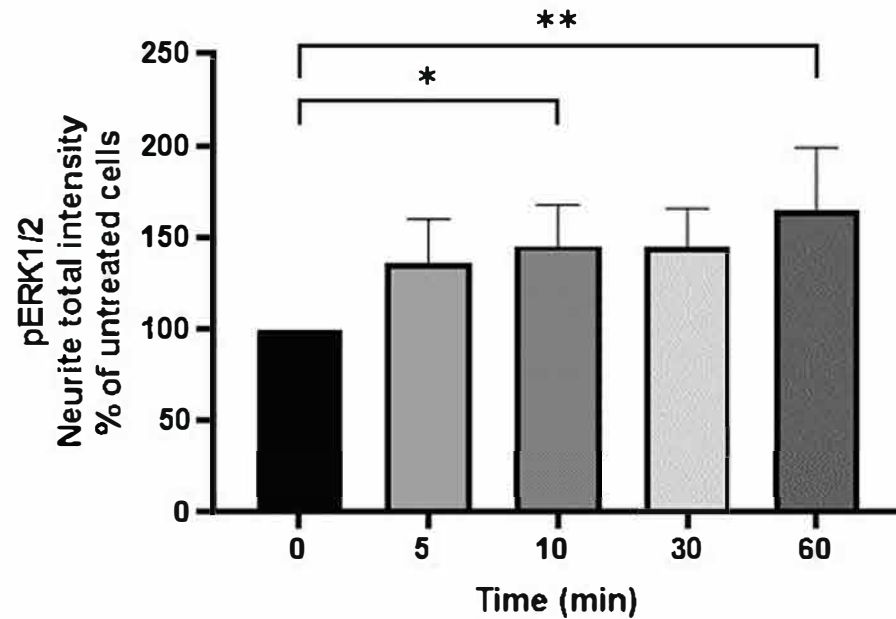
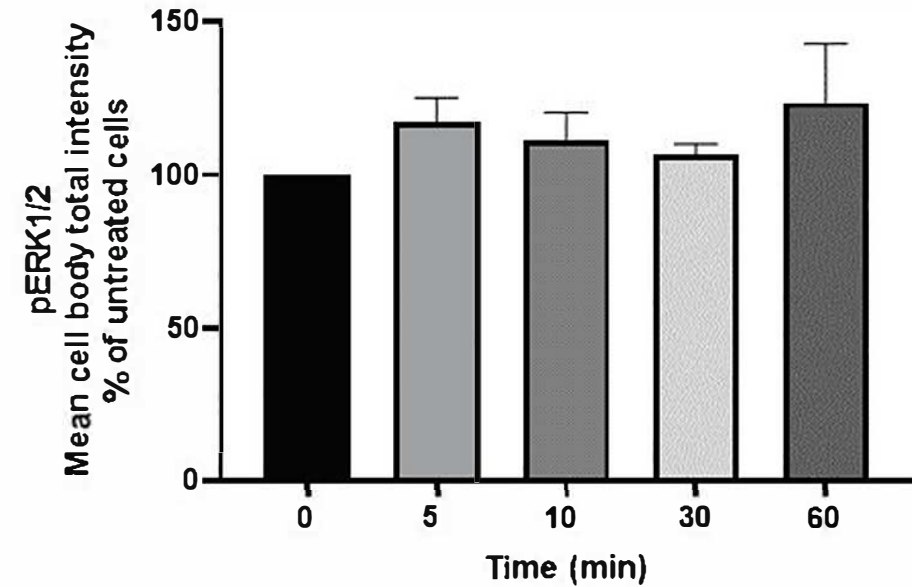


Supplemental figure S1.



(a)



(b)

Figure S1. The levels of phosphorylated ERK1/2 were determined by immunocytochemistry and neurite total intensity of pERK1/2-positive neurites (a) or the total intensity of pERK1/2 in cell bodies were determined (b). \* $p < 0.05$ , \*\* $p < 0.01$  compared to control group at one-way ANOVA with Dunnett's multiple comparisons test. Data shown are the mean value of all replicates  $\pm$  SEM from three different experiments.