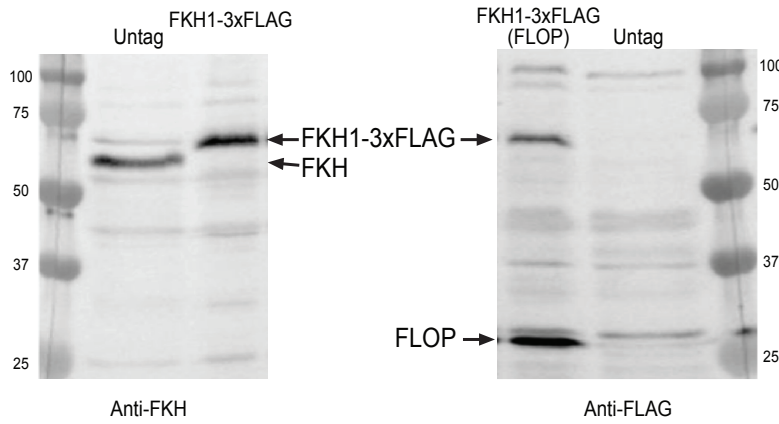
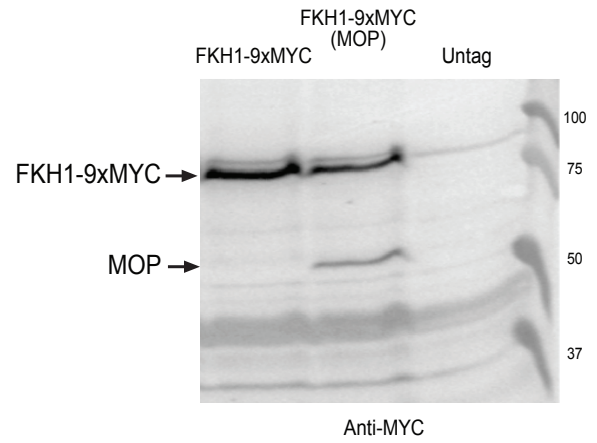


Figure S1

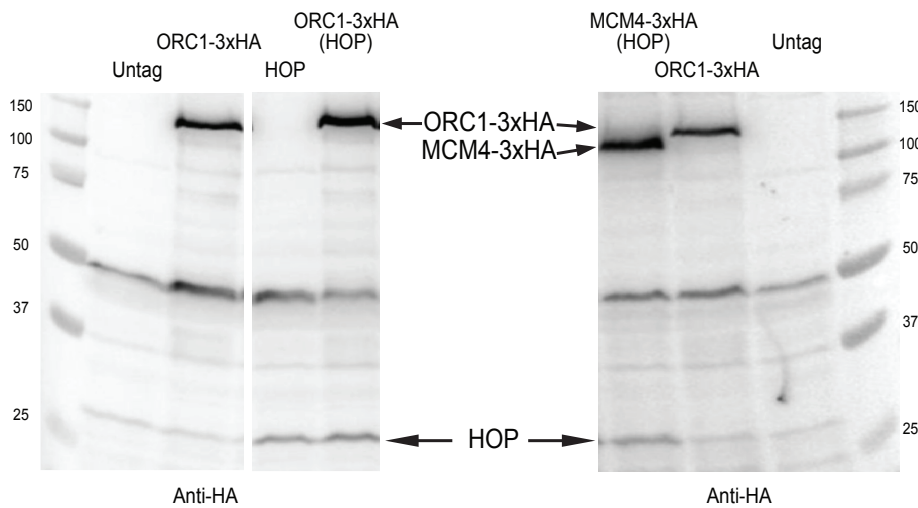
A



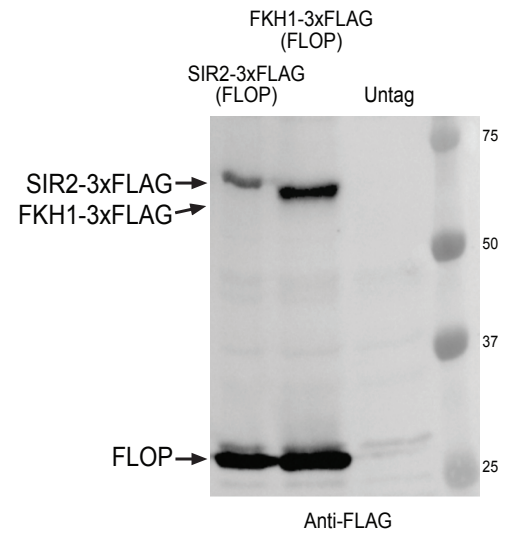
B



C



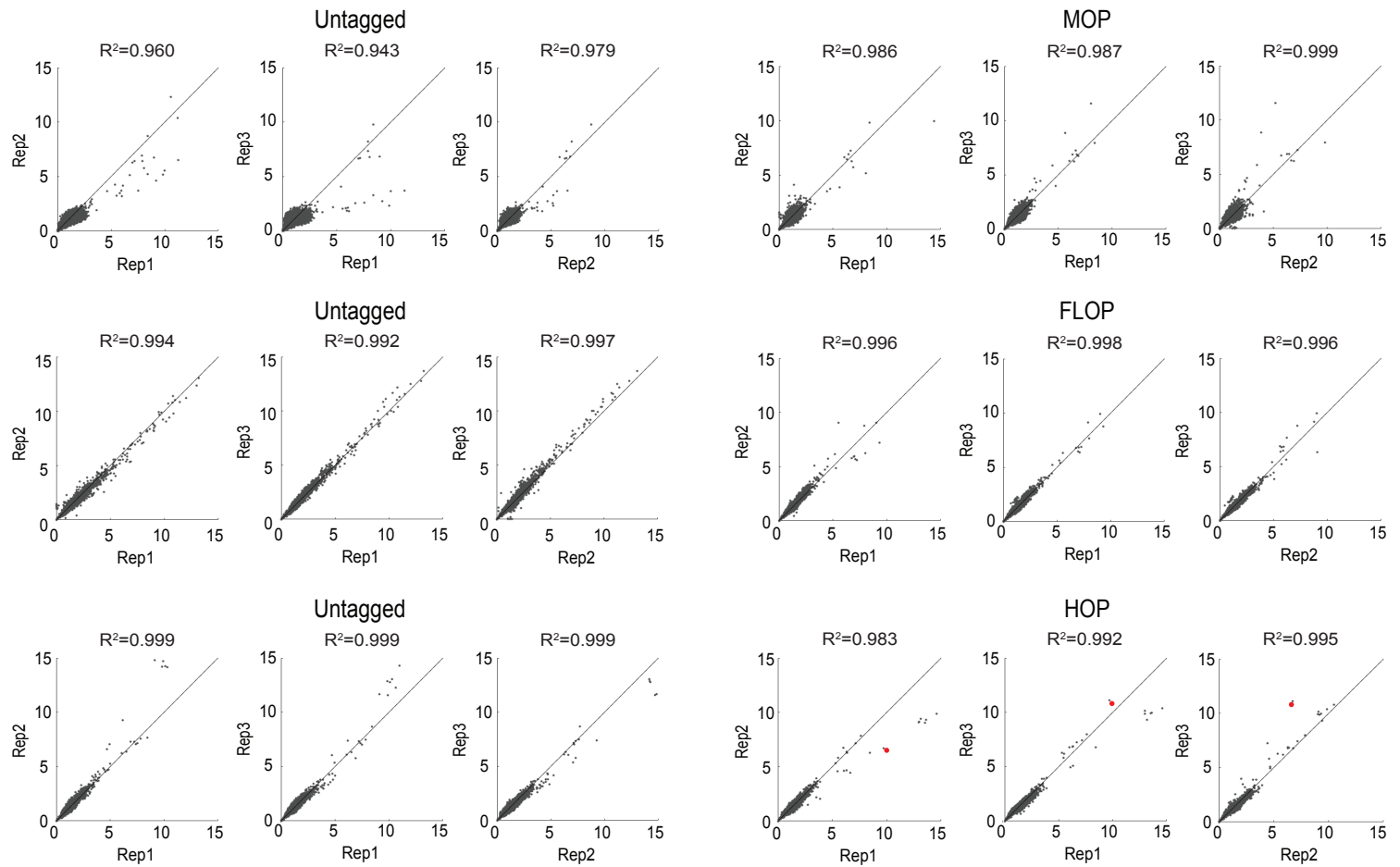
D



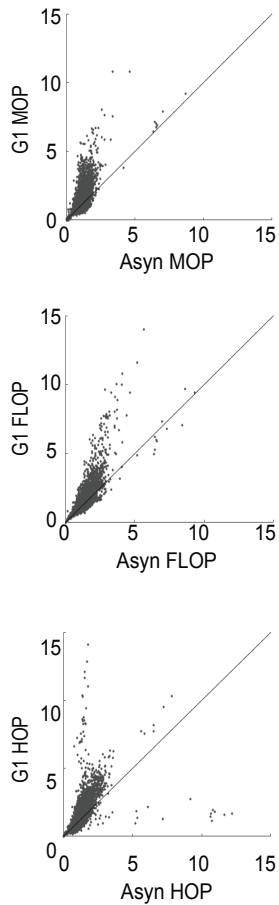
Supplement to Figure S1. Western blot analysis of epitope-tagged strains used throughout this study: “Untag” is SSy161 throughout,
(A) OAy1146 (FKH1-3xFLAG) and MPy55 (FKH1-3xFLAG FLOP).
(B) MPy166 (FKH1-9xMYC) and MPy108 (FKH1-9xMYC MOP).
(C) OAy503 (ORC1-3x-HA), MPy39 (HOP), MPy199 (ORC1-3xHA HOP), MPy184 (MCM4-3xHA HOP).
(D) YHy29 (SIR2-3xFLAG FLOP) MPy55 (FKH1-3xFLAG FLOP).

Figure S2

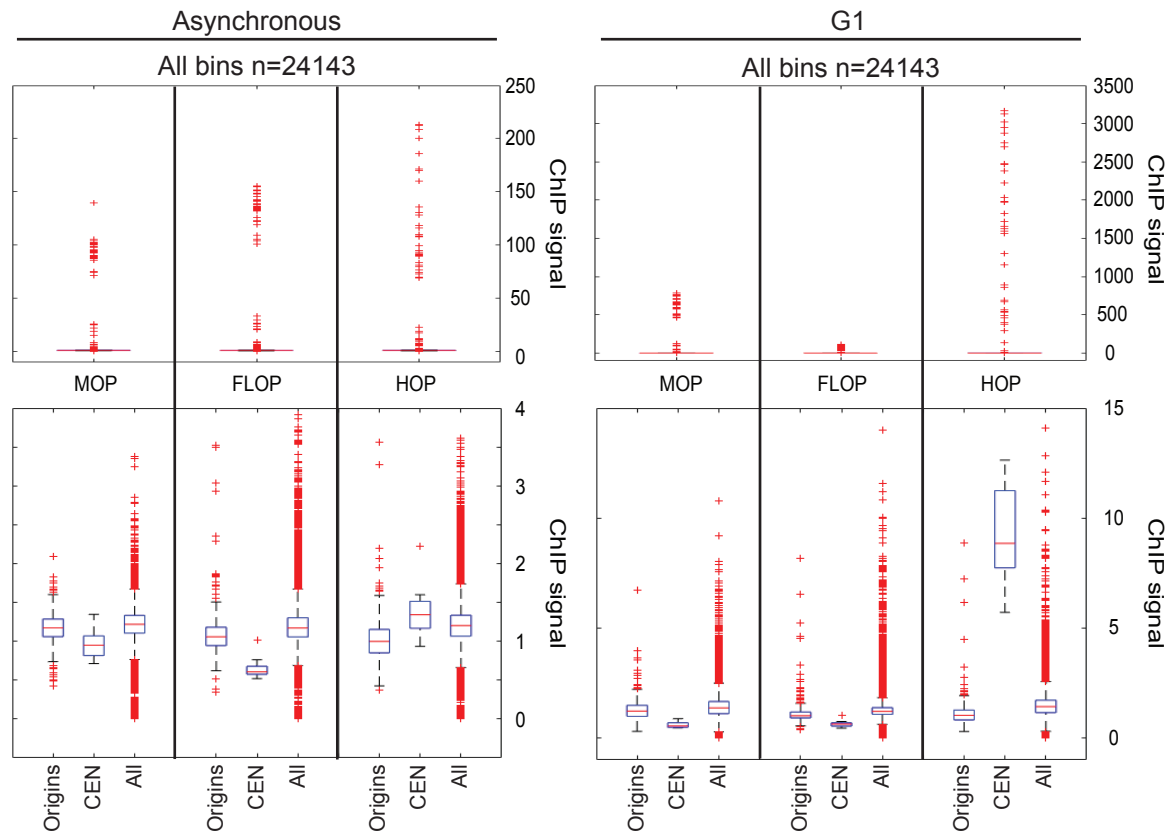
A



B



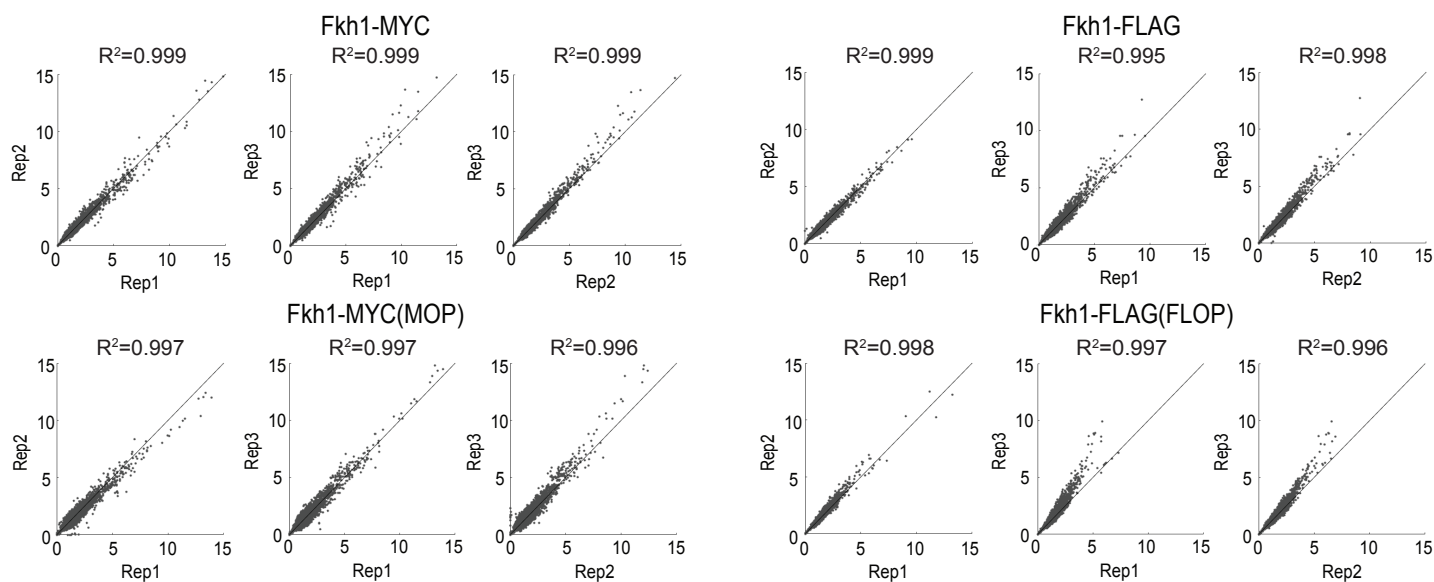
C



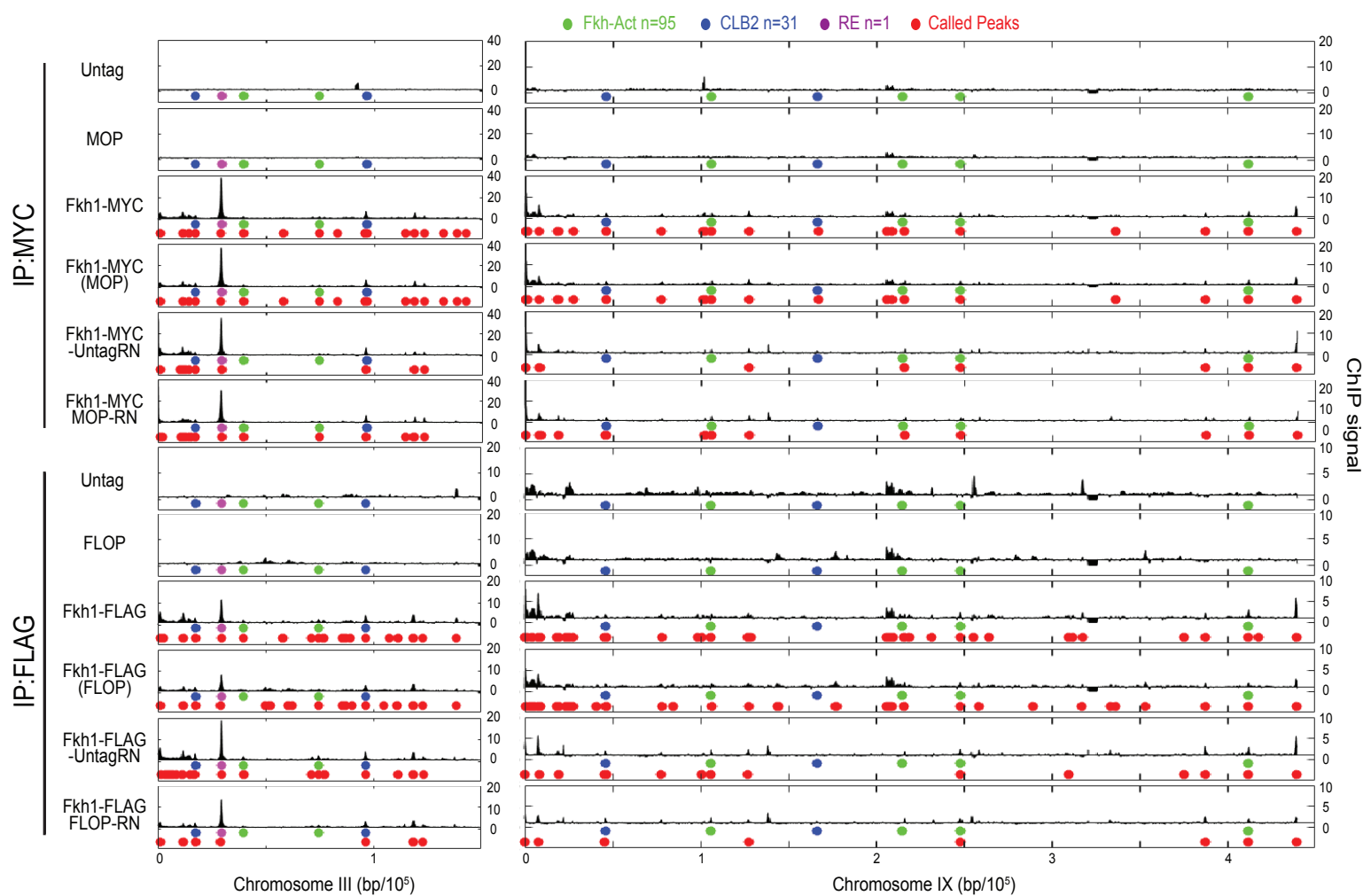
Supplement to Figure S2. (A) Two-dimensional scatter plots analyzing correlation of sample replicates. **(B)** Two-dimensional scatter plots of unsynchronized vs G1-synchronized MOP/FLOP/HOP data. **(C)** Boxplots of ChIP signals at replication origins and CENs.

Figure S3. (A) Two-dimensional scatter plots analyzing correlation of replicates. **(B)** Plots of ChIP signal across chromosomes III-L and IX with potential Fkh1 binding sites indicated as colored circles on one track and called peaks indicated on the lower track. **(C)** Heatmaps of averaged ChIP signal at snoRNAs.

A



B



C

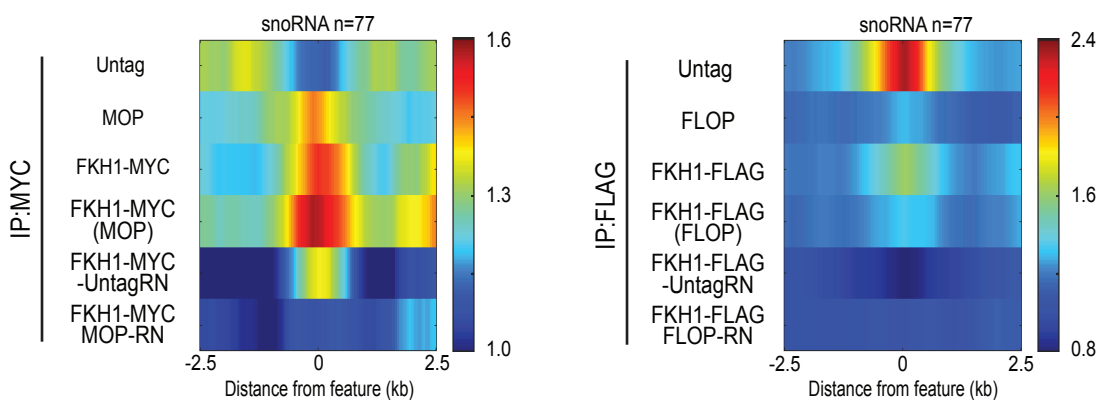
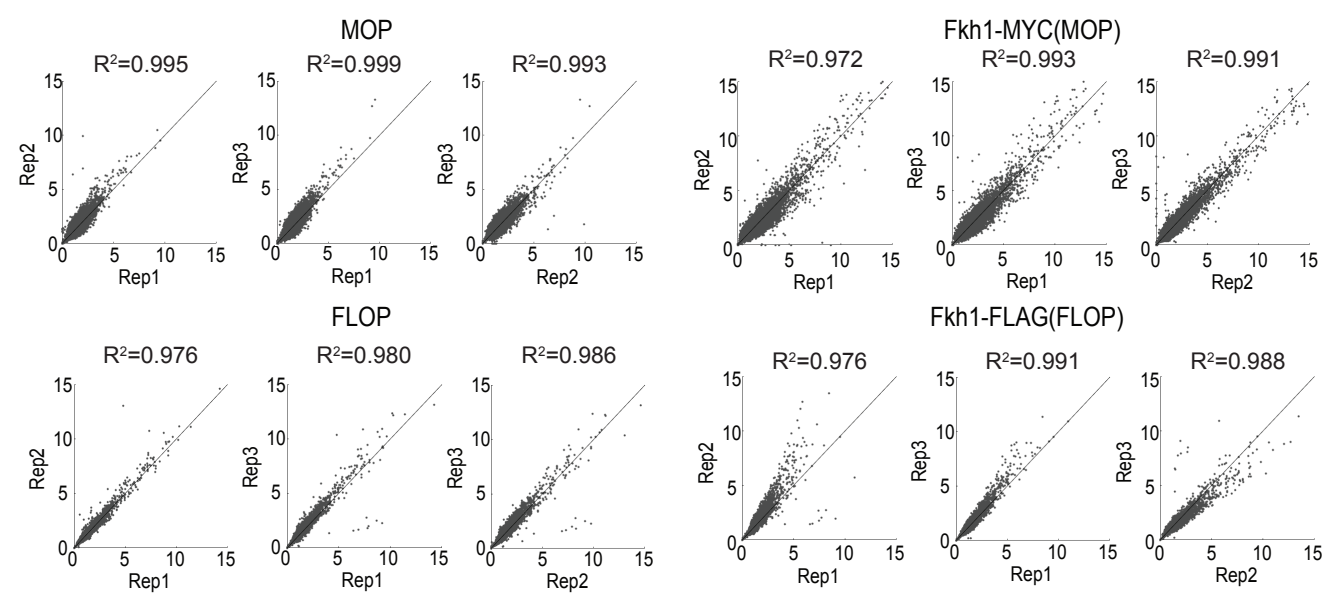
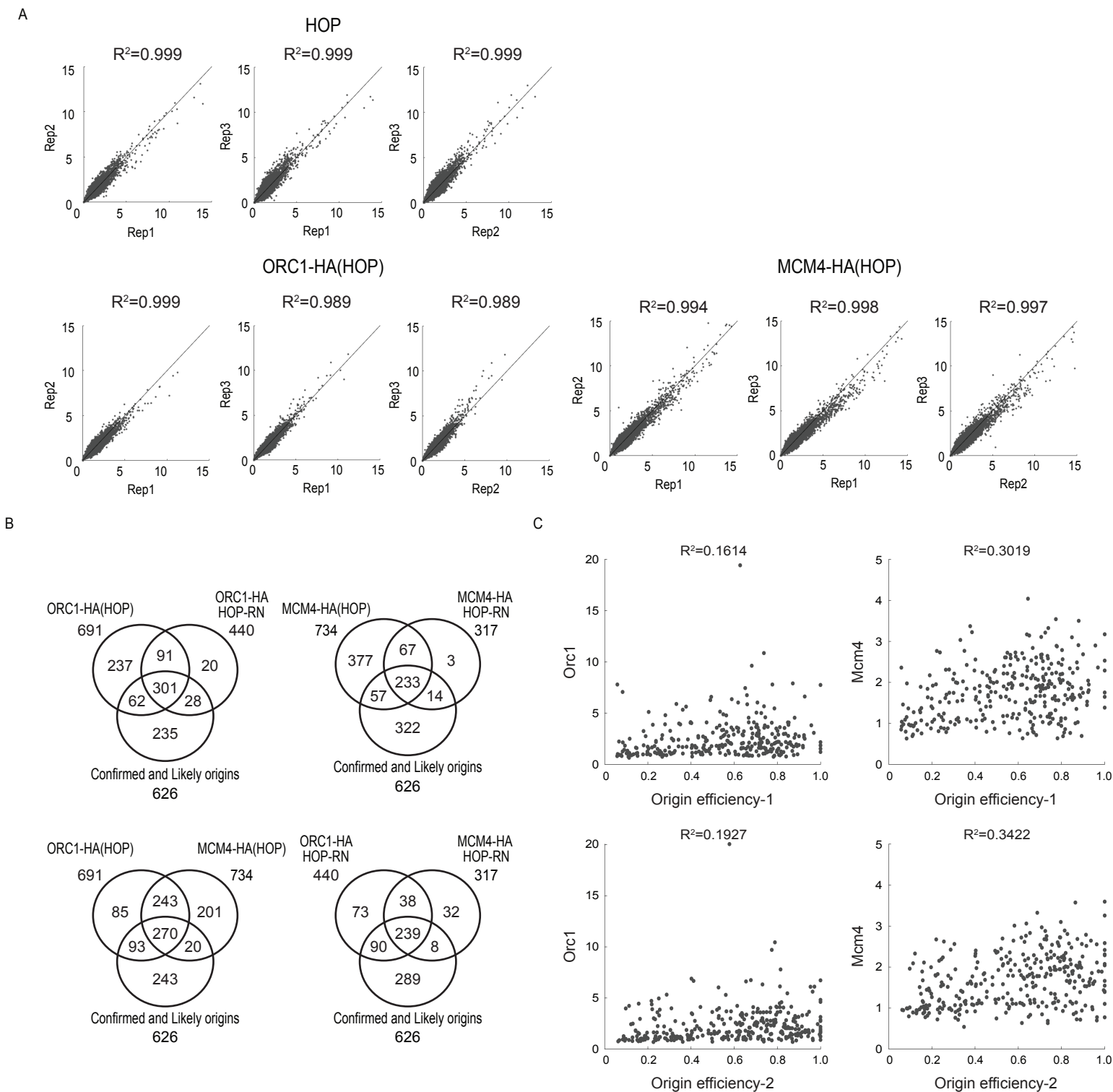


Figure S4



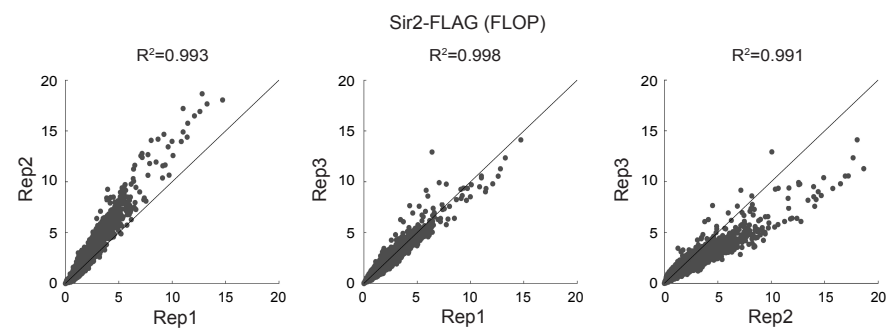
Supplement to Figure S4. Two-dimensional scatter plots analyzing correlation of replicates.

Figure S5



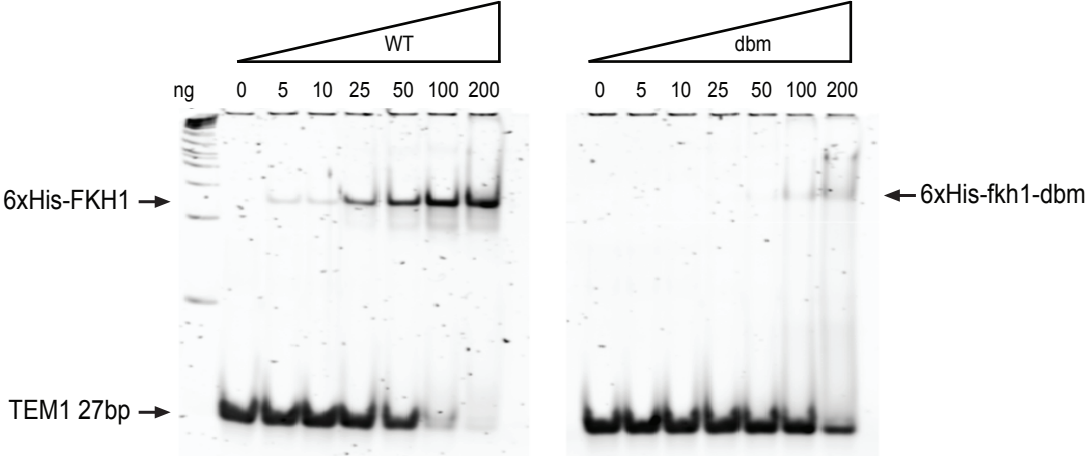
Supplement to Figure S5. (A) Two-dimensional scatter plots analyzing correlation of replicates. **(B)** Venn diagrams showing origin overlap of peaks called using RN and uncontrolled datasets against confirmed and likely origins. **(C)** Two-dimensional scatter plots comparing Orc1 and Mcm4 ChIP signals against origin efficiencies.

Figure S6

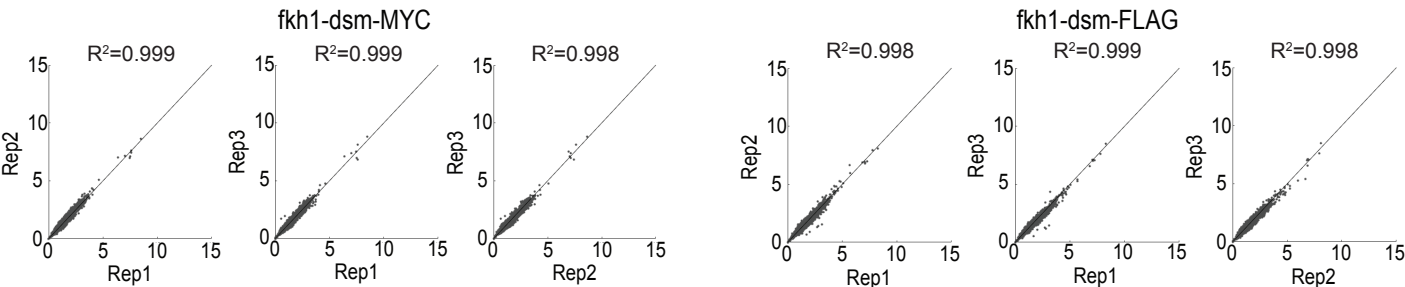


Supplement to Figure S6. Two-dimensional scatter plots analyzing correlation of replicates.

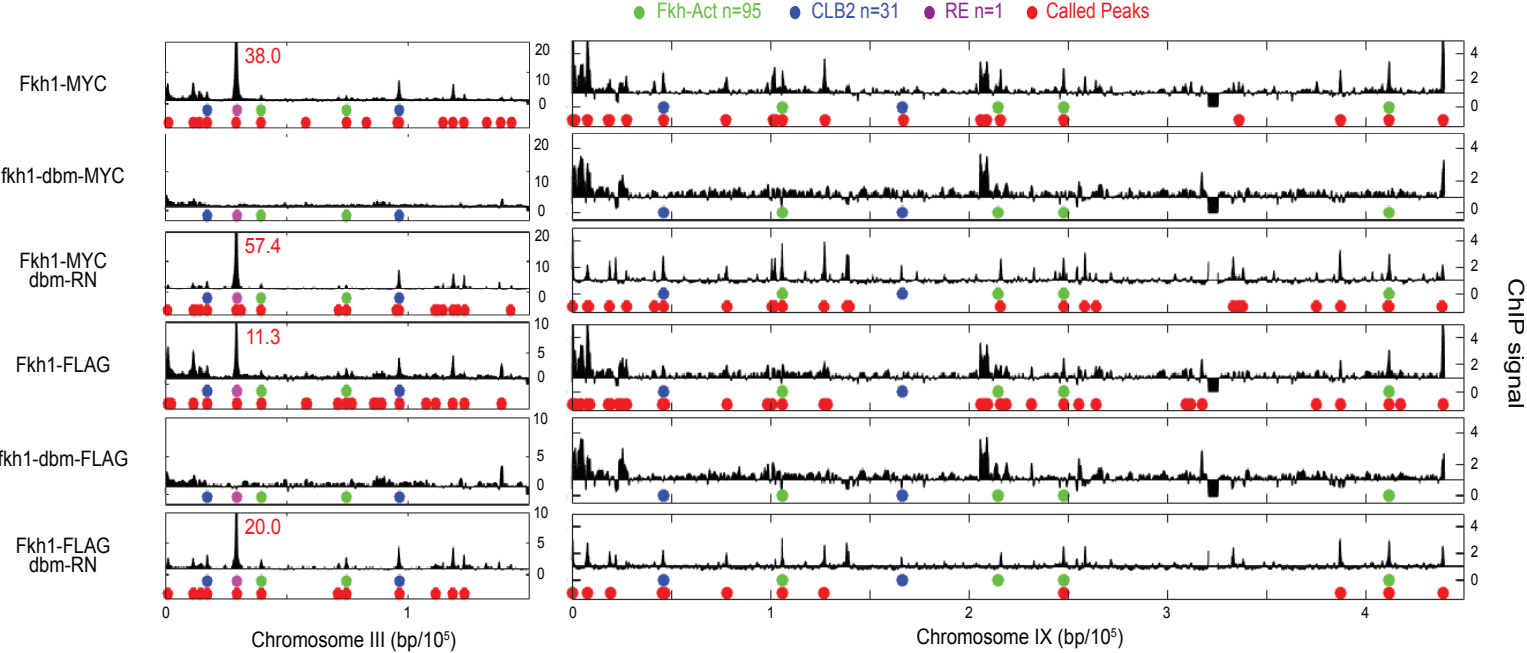
Figure S7
A



B



C



Supplement to Figure S7. (A) EMSA analysis of Fkh1-dbm versus Fkh1 binding to TEM1 DNA probe. **(B)** Two-dimensional scatter plots analyzing correlation of sample replicates. **(C)** Plots of ChIP signal across chromosomes III-L and IX with potential Fkh1 binding sites indicated as colored circles on one track and called peaks indicated on the lower track.