

### Detailed de`scription of adsorption experiments

Weigh 1.5986 g of  $\text{Pb}(\text{NO}_3)_2$ , dissolve it in 1L of deionized water, and prepare a  $\text{Pb}^{2+}$  stock solution, and then the stock solution was diluted to  $100\text{mg}\cdot\text{L}^{-1}$ . Similarly, prepare BTA solution of a concentration of  $100\text{mg}\cdot\text{L}^{-1}$ . In this study, the preliminary experiments confirmed that the optimum dosage of WL adsorbing BTA and  $\text{Pb}^{2+}$  is 0.035g. Hence, the dosage of WL in the batch adsorption experiments is 0.035g.

(1) pH experiment: To explore the effect of pH on the adsorption performance of WL by adjusting the initial pH value of the solution: take 50mL of  $\text{Pb}^{2+}$  and BTA solution with a concentration of  $100\text{mg}\cdot\text{L}^{-1}$  and place it in a set of 100mL centrifuge tubes; and use a solution of  $0.1\text{mol}\cdot\text{L}^{-1}$   $\text{HNO}_3$  and  $\text{NaOH}$  to adjust the pH of the  $\text{Pb}^{2+}$  solution between 2-6, and the pH of the BTA solution is adjusted at 2-9; later, 0.035g WL sample is added to  $\text{Pb}^{2+}$  and BTA solution respectively, then they are shaken in a constant temperature shaker at  $25\pm 1^\circ\text{C}$  at  $220\text{r}\cdot\text{min}^{-1}$  for 24h. They are then centrifuge at  $4000\text{r}\cdot\text{min}^{-1}$  for 10 mins, and the supernatant is taken and then filtered it through a  $0.45\mu\text{m}$  GE cellulose nylon membrane. The content of  $\text{Pb}^{2+}$  in the filtrate is determined by inductively coupled plasma mass spectrometer (ICP-MS, NexION 2000, Perkin-Elmer SCIEX, USA). The content of BTA in the filtrate is determined by a UV-Vis spectrophotometer (UV-2550, AOE, China). Three replicates are set up for each treatment. According to the contaminants ( $\text{Pb}^{2+}$  and BTA) concentration difference to calculate WL adsorption of  $\text{Pb}^{2+}$  and BTA content. The formula is as follows:

$$q_e = \frac{(C_0 - C_e) \times V}{m} \quad (\text{a})$$

In the formula,  $q_e$  ( $\text{mg}\cdot\text{g}^{-1}$ ) represents the adsorption amount of WL when the adsorption reaches equilibrium;  $C_0$  ( $\text{mg}\cdot\text{L}^{-1}$ ) and  $C_e$  ( $\text{mg}\cdot\text{L}^{-1}$ ) represent pollutants ( $\text{Pb}^{2+}$  and BTA) initial concentration and equilibrium concentration;  $V$  (L) is the solution volume;  $m$  (g) is the quality of WL.

(2) Adsorption kinetics: Take 50mL of  $\text{Pb}^{2+}$  and BTA solution respectively with a concentration of  $100\text{mg}\cdot\text{L}^{-1}$  and place them in a set of 100mL centrifuge tubes, and then 0.035g WL is added, and then the centrifuge tubes are placed in a constant temperature shaker at  $25\pm 1^\circ\text{C}$  and oscillated at  $220\text{r}\cdot\text{min}^{-1}$ , respectively. Samples are taken at different time points (5-1440min). Then the remaining pollutant concentration in the solution ( $\text{Pb}^{2+}$  and BTA) are taken. Filtration of solutions, centrifugation and determination of pollutant concentrations and the method of the pH experiment in (1) are the same. Three replicates were set up for each treatment. Fitting analysis of experimental data was performed using the pseudo-first-order kinetic model (b) and pseudo-second-order kinetic model (c). The formula is as follows:

$$\ln(q_e - q_t) = \ln q_e - k_1 t \quad (\text{b})$$

$$\frac{t}{q_t} = \frac{1}{k_2 q_e^2} + \frac{t}{q_e} \quad (\text{c})$$

In the formula,  $q_t$  and  $q_e$  ( $\text{mg}\cdot\text{g}^{-1}$ ) represents the adsorption capacity at time  $t$  and adsorption equilibrium, and  $K_1$  and  $K_2$  represent the rate constants of the pseudo-first-order kinetic and pseudo-second-order kinetic models, respectively.

(3) Adsorption isotherm: take 50mL of different concentrations of  $\text{Pb}^{2+}$  and BTA solutions ( $10-500\text{mg}\cdot\text{L}^{-1}$ ) and place them in 100mL centrifuge tubes. Then 0.035g WL is added, and the centrifuge tubes are placed in a constant temperature shaker at  $25\pm 1^\circ\text{C}$ , and Oscillated at  $220\text{r}\cdot\text{min}^{-1}$  for 24h. Take samples. Then measure the remaining pollutant concentrations in the

solution ( $\text{Pb}^{2+}$  and BTA). The filtration, centrifugation and determination of pollutant concentration of the solution are the same as the method of pH experiment in (1). Three replicates were set up for each treatment. The analytical data were fitted using Freundlich (d) and Langmuir (e) isotherm models. The formula is as follows:

$$q_e = K_F C_e^{1/n} \quad (\text{d})$$

$$q_e = \frac{C_e q_m K_L}{1 + C_e K_L} \quad (\text{e})$$

In the formula, where  $K_F$  represents the adsorption constant of the Freundlich isotherm model,  $1/n$  represents the adsorption intensity parameter of the Freundlich isotherm model, dimensionless;  $C_e$  represents the pollutant ( $\text{Pb}^{2+}$  and BTA) concentration at adsorption equilibrium ( $\text{mg}\cdot\text{L}^{-1}$ ),  $q_m$  is the maximum adsorption capacity of WL ( $\text{mg}\cdot\text{g}^{-1}$ ), and  $K_L$  represents the adsorption constant of the Langmuir temperature model.

(4) Adsorption thermodynamics: at different temperatures ( $25^\circ\text{C}$ ,  $35^\circ\text{C}$  and  $45^\circ\text{C}$ ), explore the adsorption capacity effect of  $\text{Pb}^{2+}$  and BTA on WL, and investigate the thermodynamics of adsorption of  $\text{Pb}^{2+}$  and BTA on WL. Use the Gibbs-Helm Holtz Equation to study the thermodynamics of adsorption of  $\text{Pb}^{2+}$  and BTA on WL. The formula is as follows:

$$\Delta G^\circ = -RT \ln K_d \quad (\text{f})$$

$$K_d = q_e m / C_e V \quad (\text{g})$$

$$\Delta G^\circ = \Delta H^\circ - T \Delta S^\circ \quad (\text{h})$$

In the formula,  $\Delta H^\circ$  ( $\text{J}\cdot\text{mol}^{-1}$ ) represents enthalpy change;  $\Delta S^\circ$  ( $\text{J}\cdot\text{mol}^{-1}\cdot\text{K}^{-1}$ ) represents entropy change;  $\Delta G^\circ$  ( $\text{kJ}\cdot\text{mol}^{-1}$ ) represents Gibbs free energy;  $K_d$  is the adsorption partition coefficient  $R$  ( $8.314\text{ J}\cdot\text{mol}^{-1}\cdot\text{K}^{-1}$ ) represents the gas constant;  $T(\text{K})$  stands for absolute temperature.

(5) Competitive adsorption of BTA and  $\text{Pb}^{2+}$ : set the concentration of BTA to  $20\text{ mg}\cdot\text{L}^{-1}$ ,  $50\text{ mg}\cdot\text{L}^{-1}$ ,  $80\text{ mg}\cdot\text{L}^{-1}$  and  $100\text{ mg}\cdot\text{L}^{-1}$ , respectively. Explore different concentrations of  $\text{Pb}^{2+}$  ( $0\text{ mg}\cdot\text{L}^{-1}$ ,  $50\text{ mg}\cdot\text{L}^{-1}$ ,  $100\text{ mg}\cdot\text{L}^{-1}$ ) on the adsorption of BTA by WL. Similarly, the  $\text{Pb}^{2+}$  concentrations are set to  $20\text{ mg}\cdot\text{L}^{-1}$ ,  $50\text{ mg}\cdot\text{L}^{-1}$ ,  $80\text{ mg}\cdot\text{L}^{-1}$  and  $100\text{ mg}\cdot\text{L}^{-1}$ , and different concentrations of adsorption of  $\text{Pb}^{2+}$  on WL are explored in the presence of BTA at different concentrations ( $0\text{ mg}\cdot\text{L}^{-1}$ ,  $50\text{ mg}\cdot\text{L}^{-1}$ ,  $100\text{ mg}\cdot\text{L}^{-1}$ ).

(6) Effects of coexisting ions and HA on the adsorption of BTA and  $\text{Pb}^{2+}$  on WL: the common cations in water ( $\text{Na}^+$ ,  $\text{K}^+$  and  $\text{Ca}^{2+}$ ) as a representative to explore the effect of adsorption of coexisting ion pairs of BTA ( $100\text{ mg}\cdot\text{L}^{-1}$ ) and  $\text{Pb}^{2+}$  ( $100\text{ mg}\cdot\text{L}^{-1}$ ). In this study, the concentrations of these cations were set between  $0\text{--}2.5\text{ mmol}\cdot\text{L}^{-1}$ . HA is the main component of natural organic matter (NOM) in natural water. The concentration of HA is set at  $0\text{--}100\text{ mg}\cdot\text{L}^{-1}$  to explore the effect of absorption of organic matter in water on BTA ( $100\text{ mg}\cdot\text{L}^{-1}$ ) and  $\text{Pb}^{2+}$  ( $100\text{ mg}\cdot\text{L}^{-1}$ ).

(7) Recycling experiment of WL: the used WL will be collected. 95% ethanol and  $0.1\text{ mol}\cdot\text{L}^{-1}$  HCl as adsorbents will be used respectively to desorb BTA and  $\text{Pb}^{2+}$  from WL. Then the regenerated WL after washed three times with deionized water and dried. Then the reusability of WL will be explored.

In experiments (5), (6) and (7), each treatment also set three repetitions. Shaking, filtering, centrifuging and determining pollutants concentrations ( $\text{Pb}^{2+}$  and BTA) are completed with using the same the method of the pH experiment in (1).

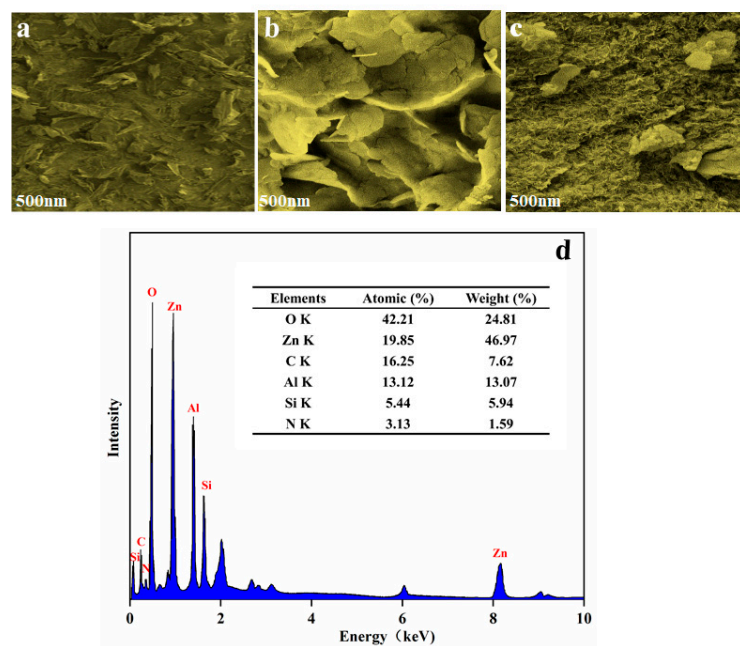
**Figure captions**

**Figure S1** SEM images of WBC (a), LDH (b), WL (c) and EDS spectrum of WL (d)

**Figure S2** XRD pattern of WBC, LDH and WL

**Figure S3** FTIR spectra of WBC, LDH and WL

**Figure S4** Effect of temperature versus WL adsorption BTA and  $\text{Pb}^{2+}$  (a); WL adsorption of BTA (b) and  $\text{Pb}^{2+}$  (c) Van't Hoff curve



**Figure S1** SEM images of WBC (a), LDH (b), WL (c) and EDS spectrum of WL (d)

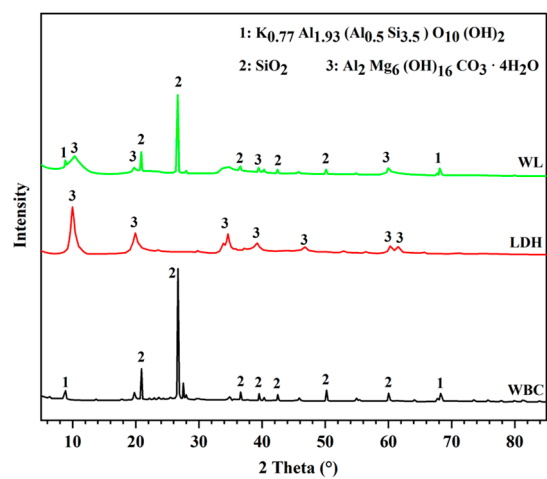


Figure S2 XRD pattern of WBC, LDH and WL

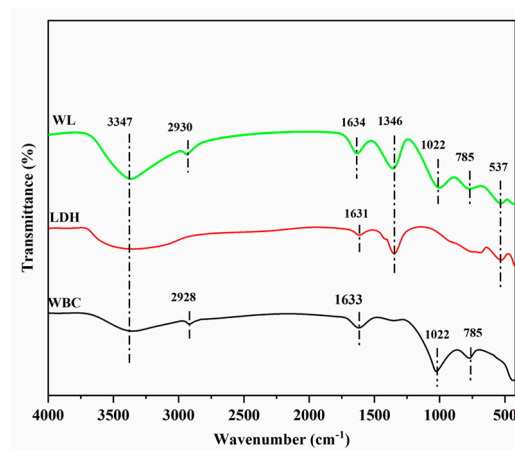
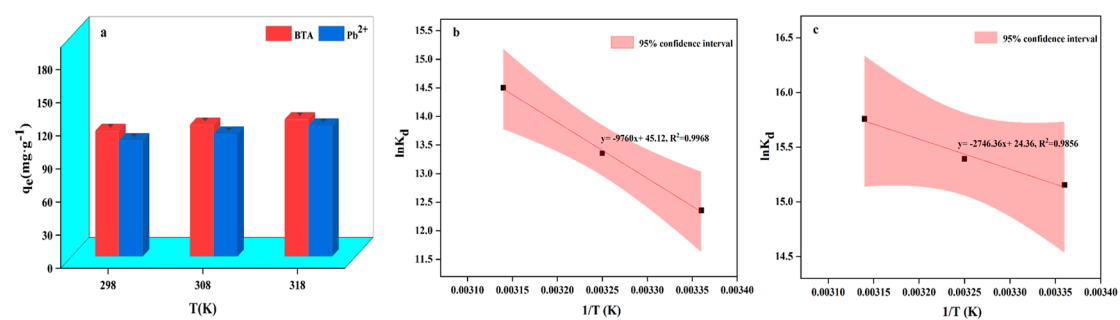


Figure S3 FTIR spectra of WBC, LDH and WL



**Figure S4** Effect of temperature versus WL adsorption BTA and  $\text{Pb}^{2+}$  (a); WL adsorption of BTA (b) and  $\text{Pb}^{2+}$  (c) Van't Hoff curve

## **Table captions**

**Table S1** Pore characteristics of WBC, LDH and WL

**Table S2** Comparison of WL with adsorbents in other related reports

**Table S3** Thermodynamic parameters of WL adsorption of BTA and  $\text{Pb}^{2+}$



**Table S1** Pore characteristics of WBC, LDH and WL

Adsorbents	Surface area	Pore volume	Average pore size
	(m <sup>2</sup> ·g <sup>-1</sup> )	(cm <sup>3</sup> ·g <sup>-1</sup> )	(nm)
WBC	69.251	0.116	10.612
LDH	1.933	0.097	15.575
WL	112.146	0.184	6.346

**Table S2** Comparison of WL with adsorbents in other related reports

Adsorbents	T (°C)	$q_m$ (mg·g <sup>-1</sup> )		References
		BTA	Pb <sup>2+</sup>	
Zn-Al-O binary metal oxide	25	9.5		[1]
Zeolitic Imidazolate Framework-8	40	204.8		[2]
Zeolitic Imidazolate Framework- graphene oxide	40	207.9		[3]
Chitosan pyromellitic dianhydride modified biochar	25		9.24	[4]
Magnetic graphene oxide/MgAl-LDH	25		192.3	[5]
Sulfamic acid hydrochar	25	159.9		[6]
Hydrochar/ MgAl-LDH	25		64.4	[7]
Magnetic MnFe <sub>2</sub> O <sub>4</sub> -sludge biochar	25		174.2	[8]
WL	25	248.44	227.13	This study

**Table S3** Thermodynamic parameters of WL adsorption of BTA and Pb<sup>2+</sup>

Pollutants	T (K)	$\Delta G^\circ$ (kJ mol <sup>-1</sup> )	$\Delta H^\circ$ (kJ mol <sup>-1</sup> )	$\Delta S^\circ$ (J mol <sup>-1</sup> K <sup>-1</sup> )
BTA	298	-30.65	81.14	375.13
	308	-34.40		
	318	-38.15		
Pb <sup>2+</sup>	298	-37.52	22.83	202.53
	308	-39.55		
	318	-41.57		

## Reference

1. Xu, S.; Chen, J.; Peng, H.; Leng, S.; Li, H.; Qu, W.; Hu, Y.; Li, H.; Jiang, S.; Zhou, W.; Leng, L., Effect of biomass type and pyrolysis temperature on nitrogen in biochar, and the comparison with hydrochar. *Fuel* **2021**, 291, 120128.
2. Jiang, J.-Q.; Yang, C.-X.; Yan, X.-P., Zeolitic Imidazolate Framework-8 for Fast Adsorption and Removal of Benzotriazoles from Aqueous Solution. *ACS Applied Materials & Interfaces* **2013**, 5, (19), 9837-9842.
3. Andrew Lin, K.-Y.; Lee, W.-D., Self-assembled magnetic graphene supported ZIF-67 as a recoverable and efficient adsorbent for benzotriazole. *Chemical Engineering Journal* **2016**, 284, 1017-1027.
4. Deng, J.; Liu, Y.; Liu, S.; Zeng, G.; Tan, X.; Huang, B.; Tang, X.; Wang, S.; Hua, Q.; Yan, Z., Competitive adsorption of Pb(II), Cd(II) and Cu(II) onto chitosan-pyromellitic dianhydride modified biochar. *Journal of Colloid and Interface Science* **2017**, 506, 355-364.
5. Huang, Q.; Chen, Y.; Yu, H.; Yan, L.; Zhang, J.; Wang, B.; Du, B.; Xing, L., Magnetic graphene oxide/MgAl-layered double hydroxide nanocomposite: One-pot solvothermal synthesis, adsorption performance and mechanisms for Pb<sup>2+</sup>, Cd<sup>2+</sup>, and Cu<sup>2+</sup>. *Chemical Engineering Journal* **2018**, 341, 1-9.
6. Deng, J.; Li, X.; Wei, X.; Liu, Y.; Liang, J.; Tang, N.; Song, B.; Chen, X.; Cheng, X., Sulfamic acid modified hydrochar derived from sawdust for removal of benzotriazole and Cu(II) from aqueous solution: Adsorption behavior and mechanism. *Bioresource Technology* **2019**, 290, 121765.
7. Luo, X.; Huang, Z.; Lin, J.; Li, X.; Qiu, J.; Liu, J.; Mao, X., Hydrothermal carbonization of sewage sludge and in-situ preparation of hydrochar/MgAl-layered double hydroxides composites for adsorption of Pb(II). *Journal of Cleaner Production* **2020**, 258, 120991.
8. Chen, Y.; Xu, F.; Li, H.; Li, Y.; Liu, Y.; Chen, Y.; Li, M.; Li, L.; Jiang, H.; Chen, L., Simple hydrothermal synthesis of magnetic MnFe<sub>2</sub>O<sub>4</sub>-sludge biochar composites for removal of aqueous Pb<sup>2+</sup>. *Journal of Analytical and Applied Pyrolysis* **2021**, 156, 105173.