

## Supplementary Materials

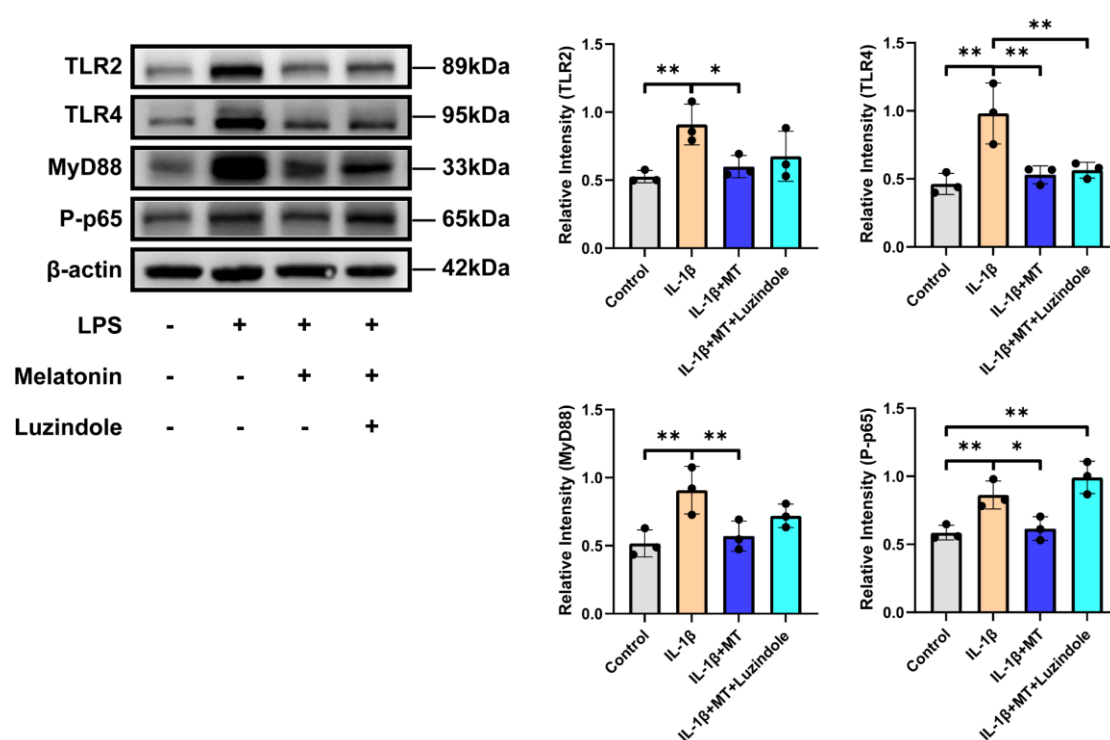


Figure S1. Western blot results and semi-quantitative analysis of TLR2/4-MyD88-NFκB in

RAW264.7. Data are presented as means  $\pm$  SD: \* p < 0.05, \*\* p < 0.01. MT, melatonin.

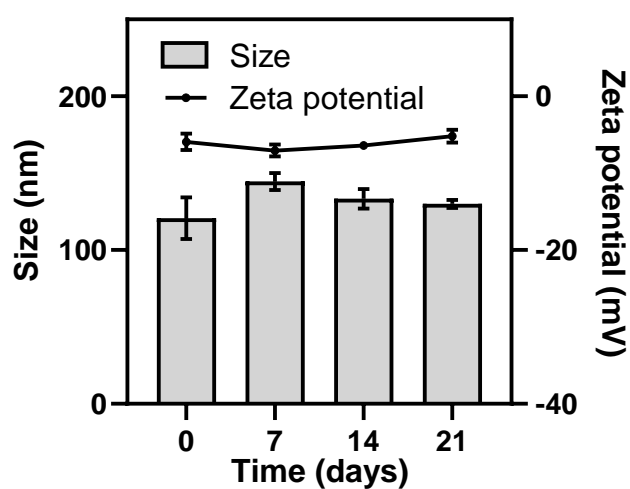


Figure S2. Particle size and zeta potential of MT@PLGA-COLBP nanoparticles at 0-7-14-21 days.

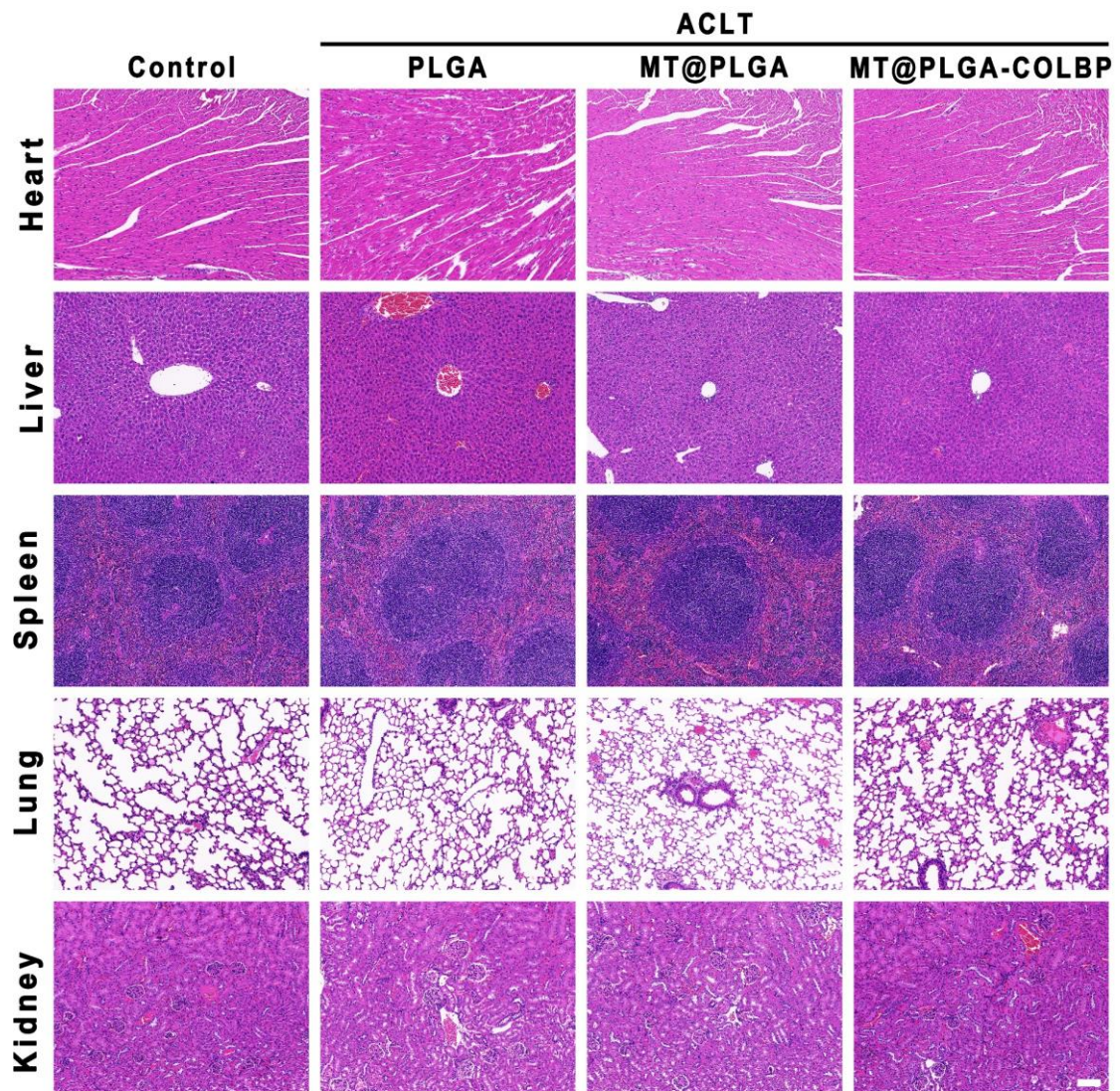


Figure S3. HE staining of mouse heart, liver, spleen, lung and kidney after treatment. Scale bar = 100 $\mu$ m.