



Supplementary Materials:

Bridging the Chemical Profile and Biological Activities of a New Variety of *Agastache foeniculum* (Pursh) Kuntze Extracts and Essential Oil

Fănică Bălănescu ^{1,2}, Andreea Veronica Botezatu ^{2,*}, Fernanda Marques ³, Anna Busuioc ², Olivian Marincaș ⁴, Costel Vinătoru ⁵, Geta Cârâc ², Bianca Furdui ² and Rodica Mihaela Dinica ^{2,*}

¹ Faculty of Medicine and Pharmacy, “Dunărea de Jos” University of Galati, 35 A.I. Cuza Street, 800010 Galati, Romania

² Faculty of Sciences and Environment, Department of Chemistry Physical and Environment, “Dunărea de Jos” University of Galati, 111 Domnească Street, 800201 Galati, Romania

³ Departamento de Engenharia e Ciências Nucleares (DECN), Centro de Ciências e Tecnologias Nucleares, Instituto Superior Técnico, University of Lisbon, Campus Tecnológico e Nuclear, Estrada Nacional 10, Km 139.7, 2695-066 Bobadela, Portugal

⁴ National Institute for Research and Development of Isotopic and Molecular Technologies, 67-103 Donat Street, 400293 Cluj-Napoca, Romania

⁵ Plant Genetic Resources Bank for Vegetables, Floriculture, Aromatic and Medicinal Plants Buzău, 56 Nicolae Bălcescu Street, 120187 Buzău, Romania

* Correspondence: andreea.botezatu@ugal.ro (A.V.B.); rodica.dinica@ugal.ro (R.M.D.)

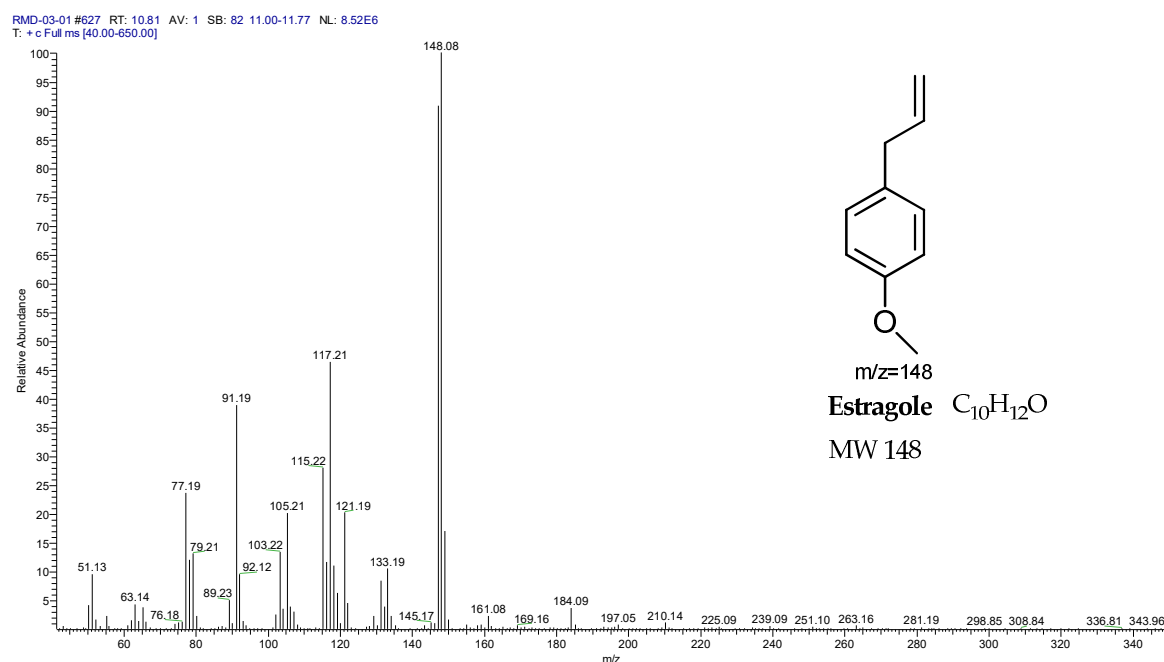


Figure S1. GC/MS spectra and fragmentation patterns of methyl chavicol (Estragole)

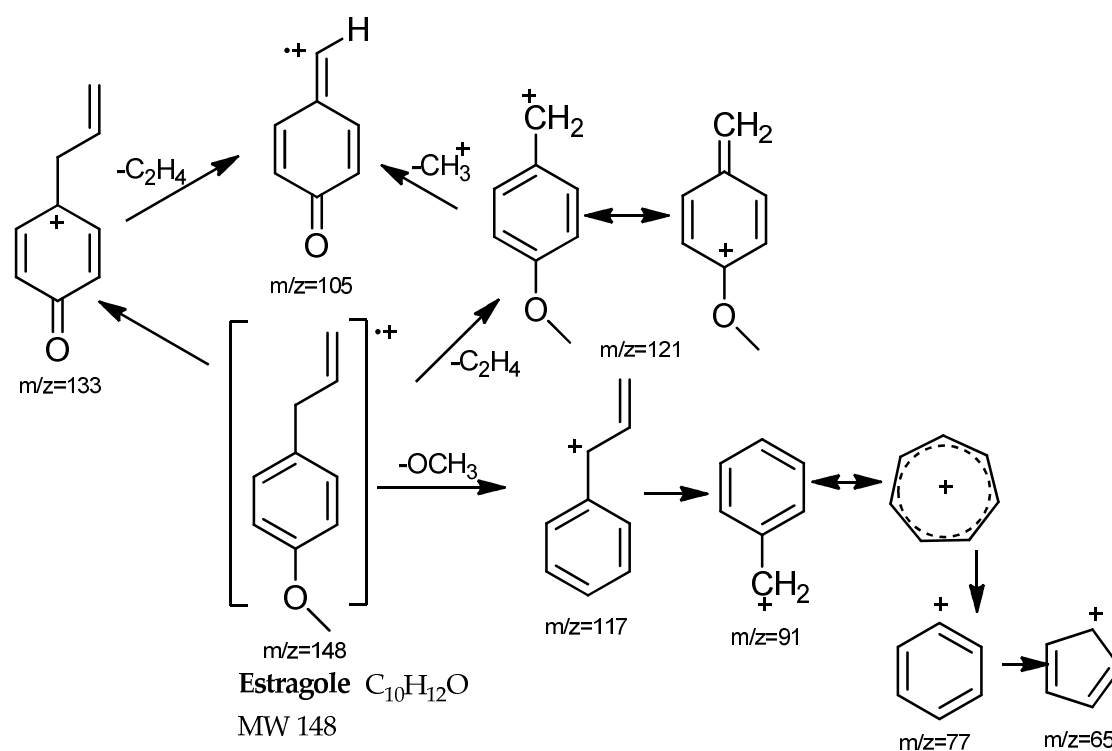


Figure S2. Mass spectrum interpretation of methyl chavicol (Estragole)

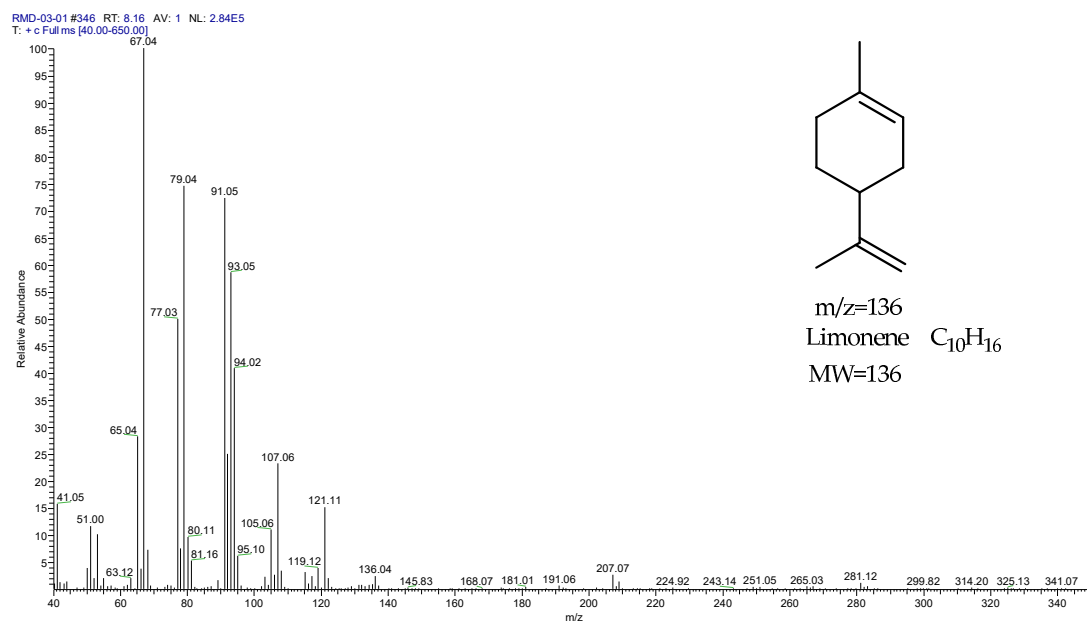


Figure S3. GC/MS spectra and fragmentation patterns of limonene

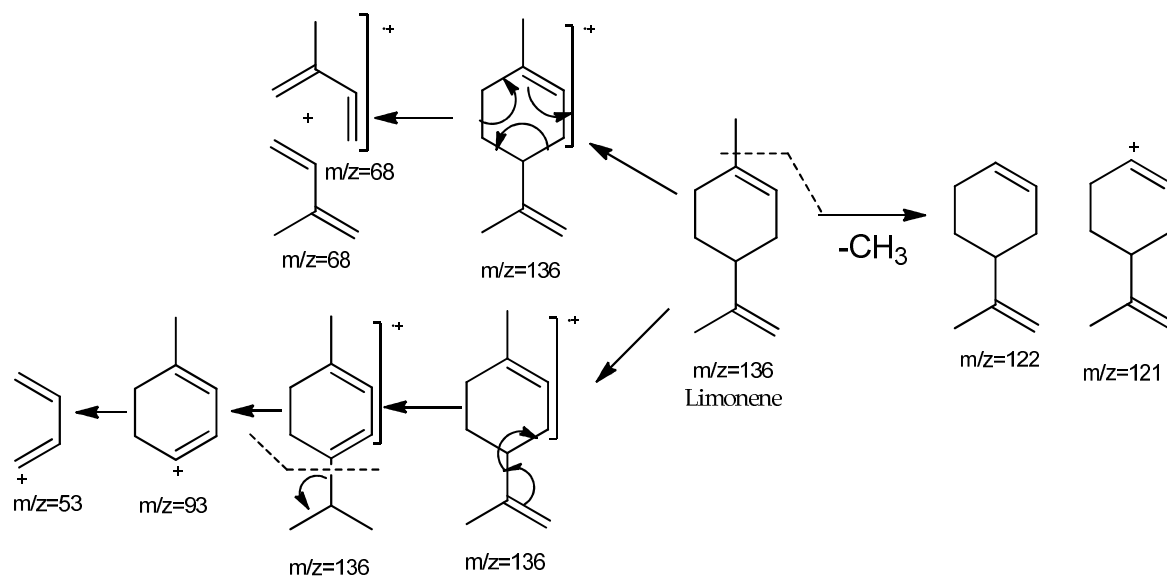


Figure S4. Mass spectrum interpretation of limonene

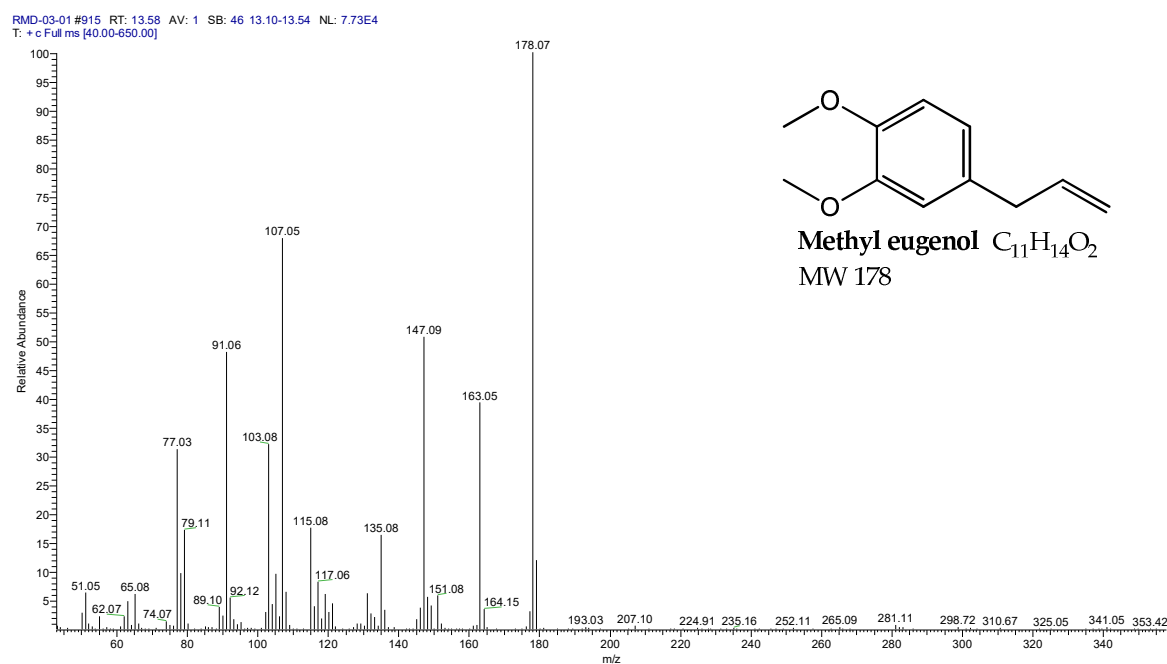


Figure S5. GC/MS spectra and fragmentation patterns of methyl eugenol

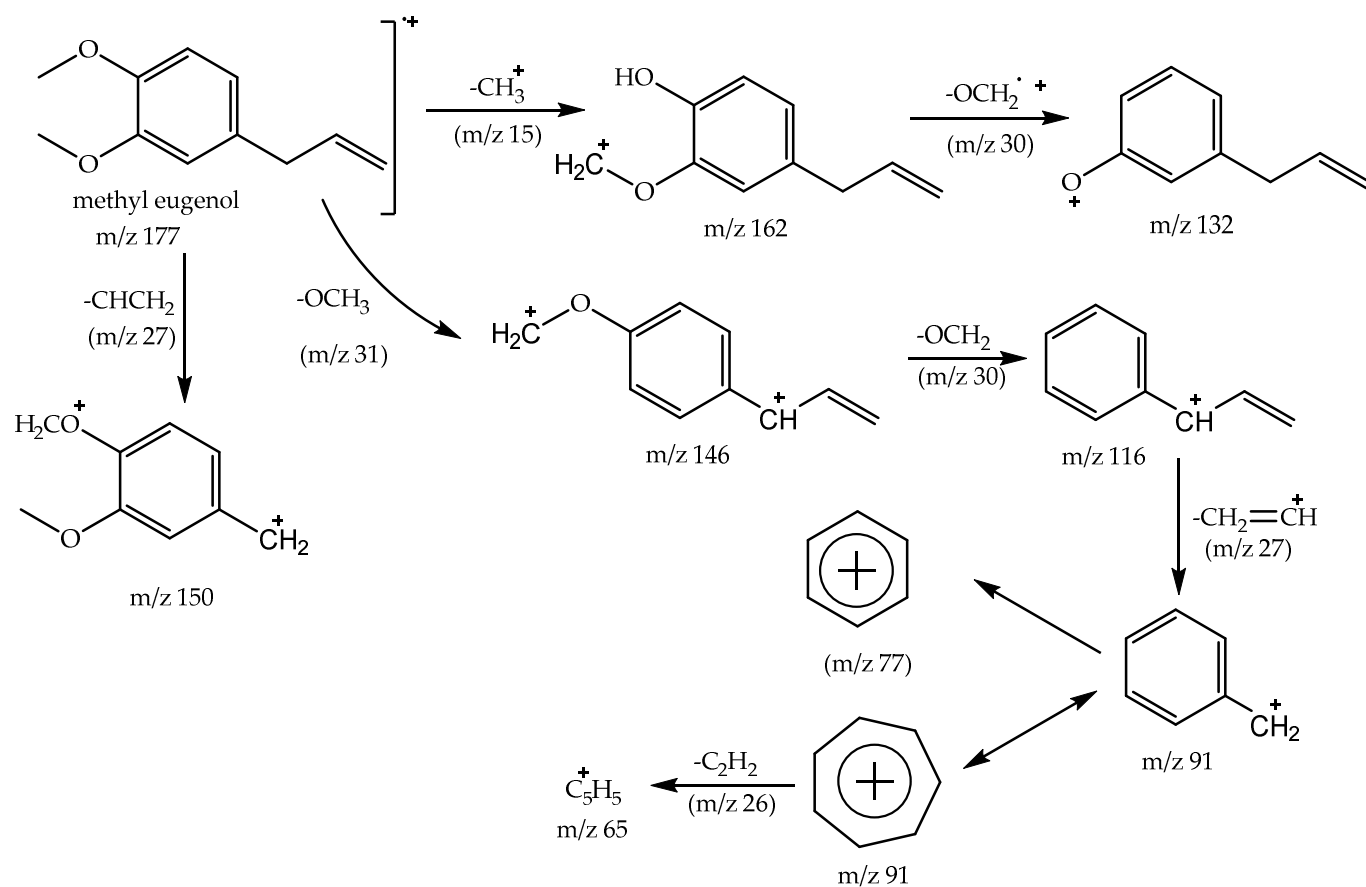


Figure S6. Mass spectrum interpretation of methyl eugenol

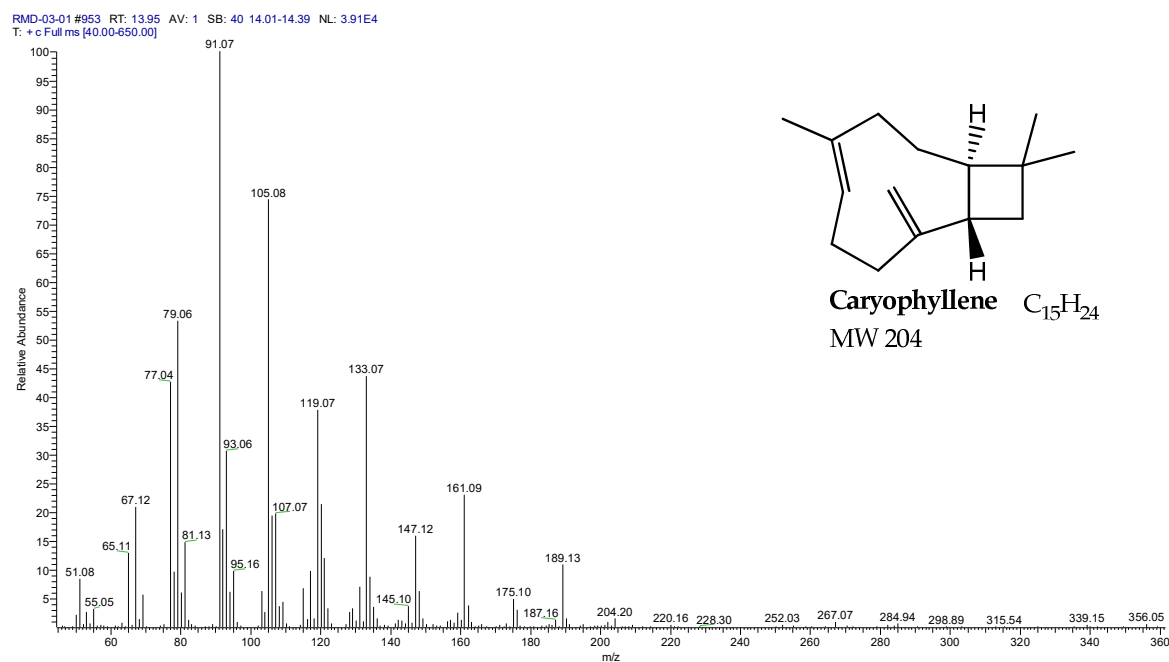


Figure S7. GC/MS spectra and fragmentation patterns of Caryophyllene

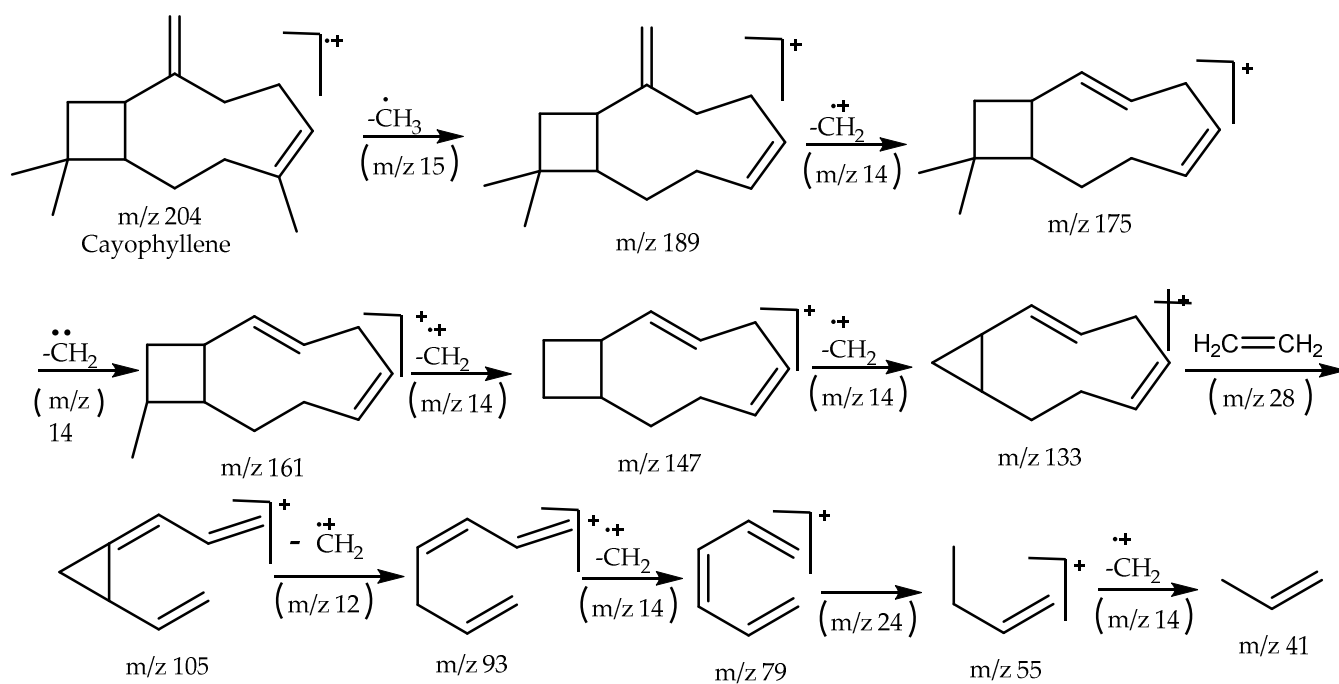


Figure S8. Mass spectrum interpretation of Caryophyllene