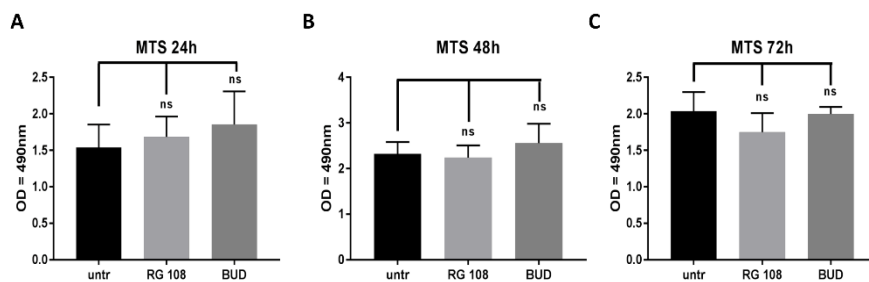
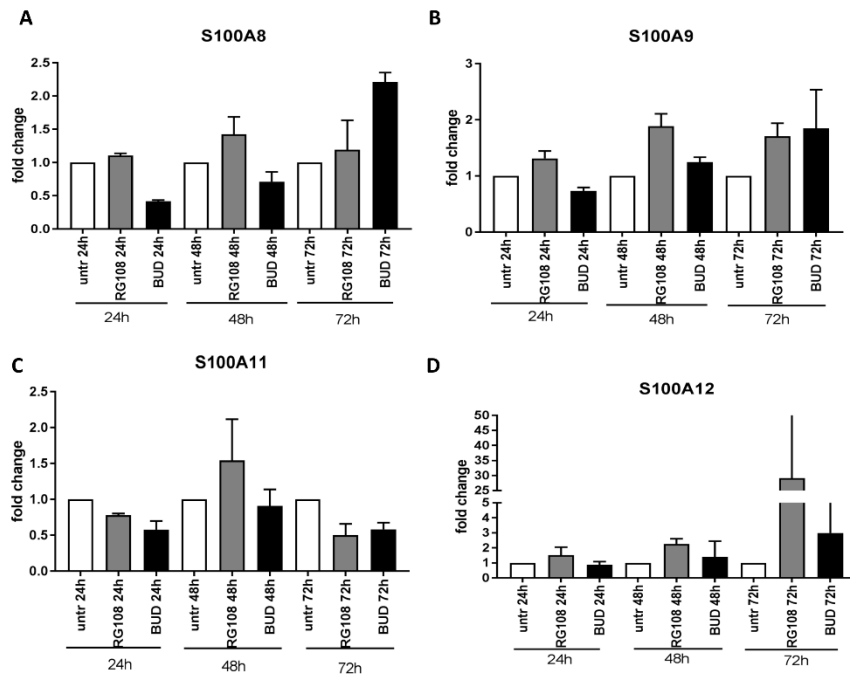


**Figure S1.** Viability of the THP-1 monocytic cell line measured by the chemiluminescence (A,C) and by the MTS assay (B,D) after treatment with graded concentrations of budesonide (A,B) and RG 108 (C,D) following 24-hour incubation (n = 3–6). P values were expressed as follows: 0.05 > p > 0.01 as \* and ns – not significant.



**Figure S2.** Viability of the THP-1 monocytic cell line measured by the MTS assay after treatment budesonide (10  $\mu$ M) and RG 108 (100  $\mu$ M) after different time points 24 (A), 48 (B) and 72 hours (C) (n = 5). ns – not significant.



**Figure S3.** Expression level of S100A8(A), A100A9(B), S100A11(C) and S100A12(D) followed by budesonide or RG108 treatment in THP-1 cells measured by qRT-PCR at different time points (n = 2).