

Supplementary Materials:

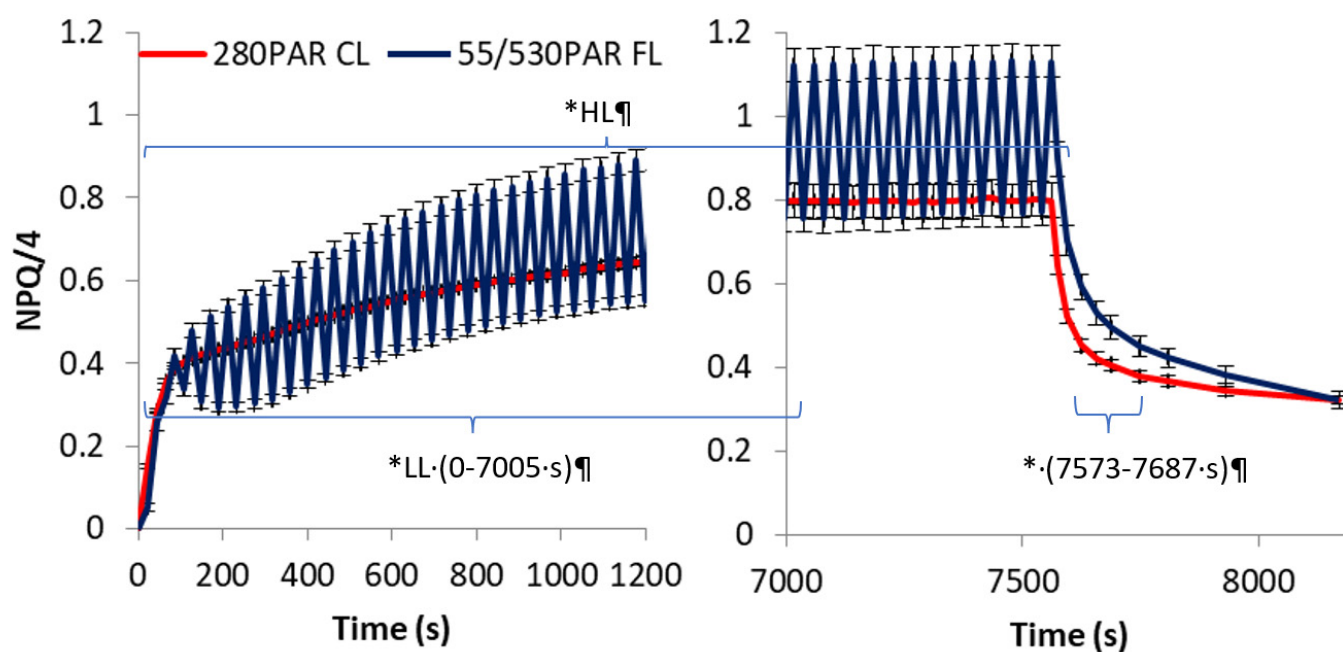


Figure S1. Non-photochemical quenching (NPQ) induced by $280 \mu\text{mol m}^{-2}\text{s}^{-1}$ of constant light (280PAR CL) and fluctuating light (50/530 PAR FL) changing every 20 s from low ($55 \mu\text{mol m}^{-2}\text{s}^{-1}$) to high ($530 \mu\text{mol m}^{-2}\text{s}^{-1}$) intensity for 7562 s followed by a dark period. Data for the *At* WT grown in soil with optimum water availability. Means and standard errors are given ($n=8$), * indicates a statistical difference at $p < 0.05$ between the HL or LL phase of fluctuating and constant light.