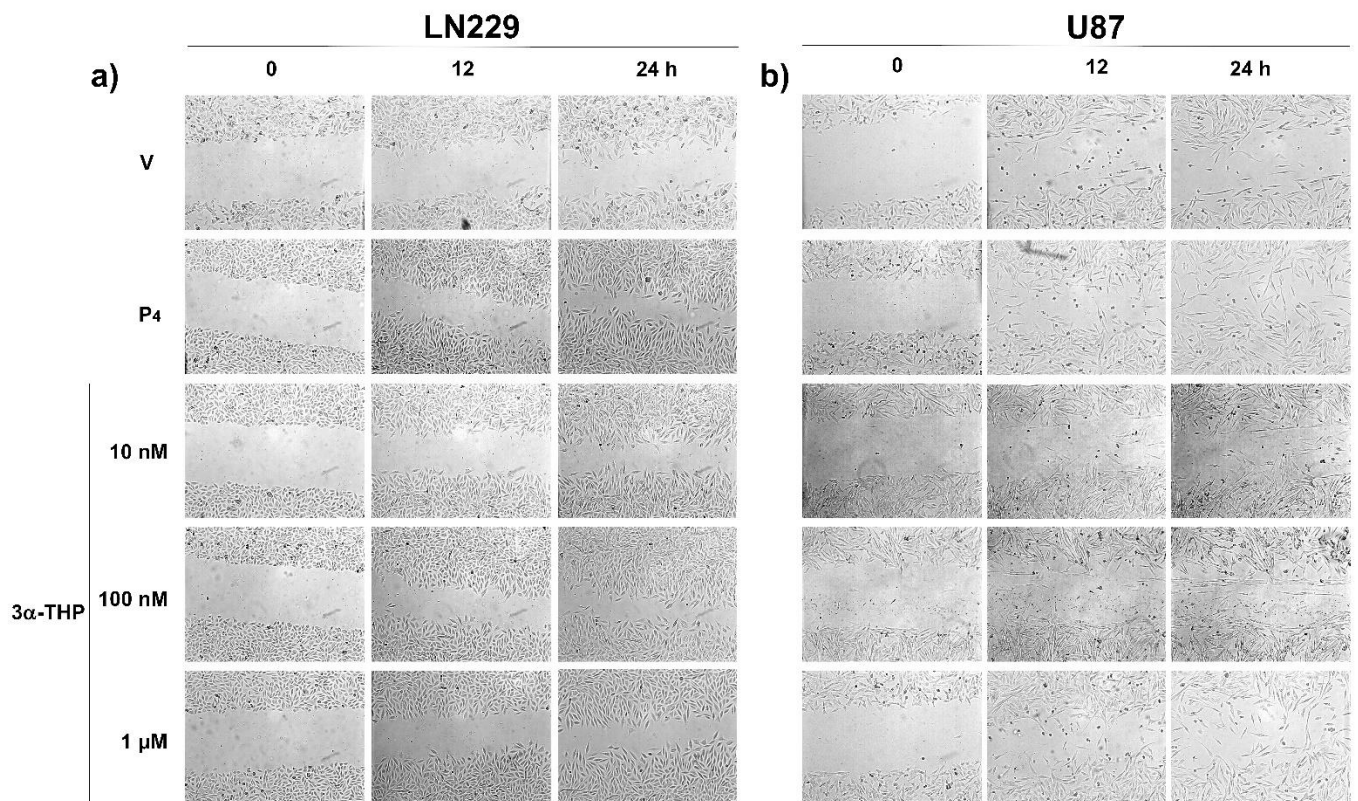


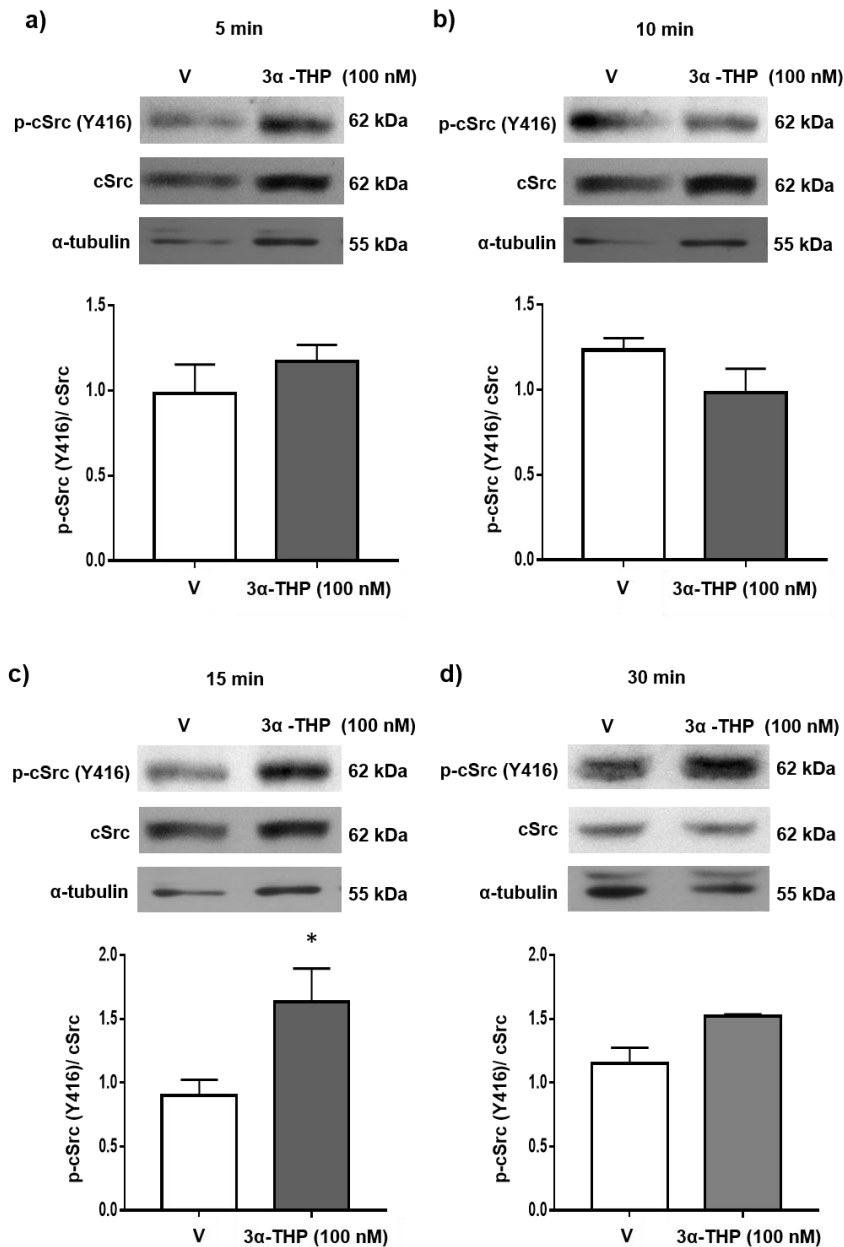
**Allopregnanolone promotes migration and invasion of human glioblastoma cells
through c-Src activation**

**Carmen J Zamora-Sánchez¹, Claudia Bello-Alvarez¹, Mauricio Rodríguez-Dorantes², and
Ignacio Camacho-Arroyo^{1,*}**

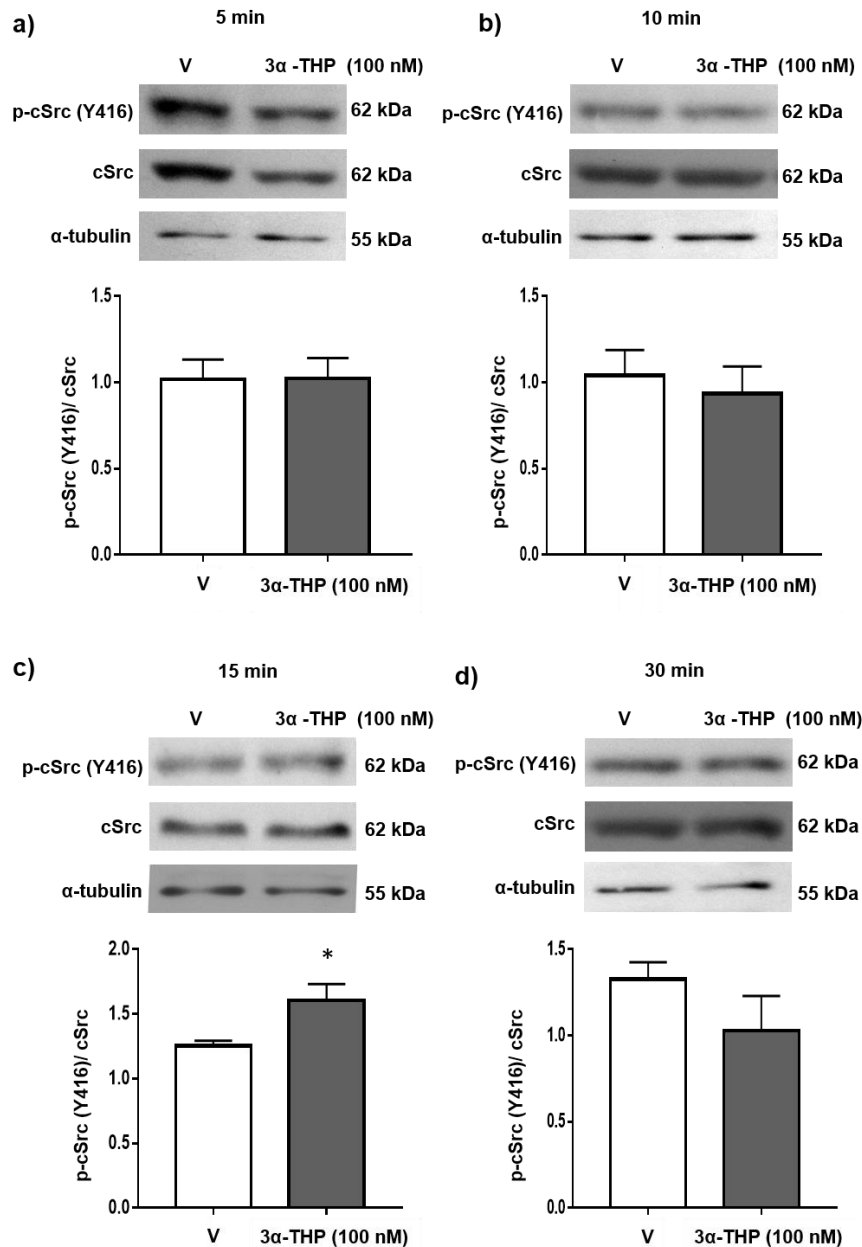
SUPPLEMENTARY FIGURES AND FIGURE LEGENDS



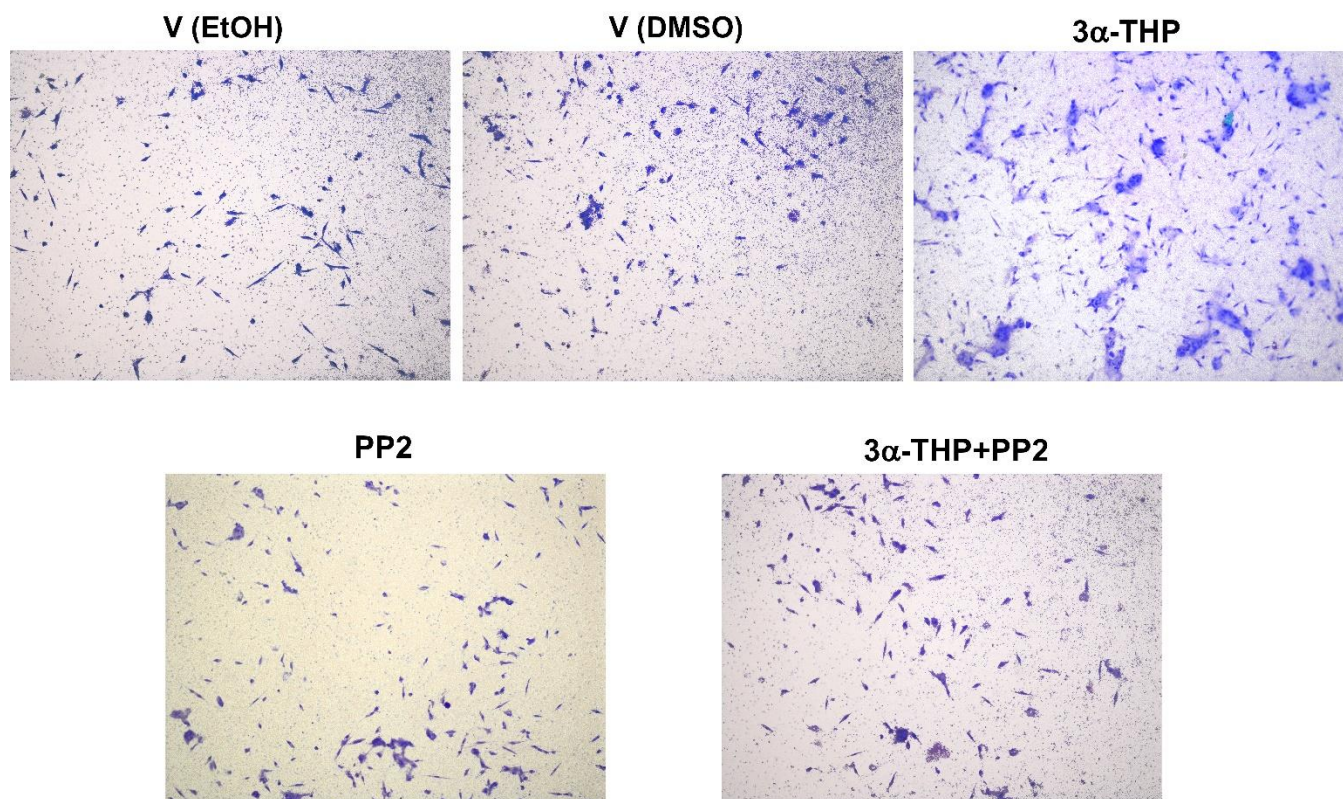
Supplementary Figure S1. Representative experiments of migration assays in **a)** LN229 and **b)** U87 cell lines. Cells were treated with progesterone (P4 10 nM) as a positive control and different concentrations of 3α-THP.



Supplementary Figure S2. Effect of 3α-THP on c-Src activation in U87 cells in a time-course experiment. The phosphorylation of c-Src (Y416) was determined by Western blot under the treatment of 3α-THP 100 nM or Vehicle (V, EtOH 0.01 %) for **a)** 5 min; **b)** 10 min; **c)** 15 min; **d)** 30 min. The upper panel of each section shows a representative Western blot experiment of p-c-Src, total c-Src and α-tubulin as loading control. Each lower panel presents the densitometric analysis of p-cSrc/c-Src. Each column represents the mean ± SEM, n = 3; *p < 0.05 3α-THP vs V.



Supplementary Figure S3. Effect of 3α-THP on c-Src activation in LN229 cell line in a time-course experiment. The phosphorylation of c-Src (Y416) was determined by Western blot under the treatment of 3α-THP 100 nM or Vehicle (V, EtOH 0.01 %) for **a)** 5 min; **b)** 10 min; **c)** 15 min; and **d)** 30 min. The upper panel of each section shows a representative Western blot experiment of p-cSrc, total c-Src and α-tubulin as loading control. Each lower panel presents the densitometric analysis of p-cSrc/c-Src. Each column represents the mean ± SEM., n = 3; *p < 0.05 3α-THP vs V.



Supplementary Figure S4. Effect of 3α-THP and the pharmacological inhibitor of c-SRC, PP2 on U87 cell invasion. Representative images of invasion experiments in the U87 cell line. All photographs were taken at 10X augment.