

Impact of Musashi-1 and Musashi-2 double knockdown on Notch signaling and the pathogenesis of endometriosis

Theresa Strauß¹, Burkhard Greve², Michael Gabriel³, Nurjannah Achmad^{1§}, Dhanusha Schwan^{1‡}, Nancy Adriana Espinoza-Sanchez^{1,2}, Antonio Simone Laganà⁴, Ludwig Kiesel¹, Matti Poutanen⁵, Martin Götte^{1*} and Sebastian Daniel Schäfer¹

¹ Department of Gynecology and Obstetrics, University Hospital Muenster, Albert-Schweitzer-Campus 1, Building A1, 48149 Münster, Germany; tete.strau@gmail.com; nurjannah.achmad@outlook.com; Dhanusha.Schwan@uk-essen.de; Ludwig.kiesel@ukmuenster.de; nancyadriana.espinozasanchez@ukmuenster.de; sd.schaefer@ukmuenster.de

² Department of Radiotherapy-Radiooncology, University Hospital Muenster, Albert-Schweitzer-Campus 1, Building A1, 48149 Muenster, Germany; greveb@uni-muenster.de; nancyadriana.espinozasanchez@ukmuenster.de

³ Department of Obstetrics and Gynecology, Institute of Medicine and Research Centre for Integrative Physiology and Pharmacology, Institute of Biomedicine, University of Turku, Finland; micawo@utu.fi

⁴ Department of Obstetrics and Gynecology, "Filippo Del Ponte" Hospital, University of Insubria, Varese, Italy; antoniosimone.lagana@uninsubria.it

⁵ Research Centre for Integrative Physiology and Pharmacology, Institute of Biomedicine, University of Turku, Finland; matpou@utu.fi

§ present address: Jenderal Achmad Yani University, Cimahi, West Java, 40513 Indonesia

present address: Klinische Forschergruppe 117, Universitätsklinikum Essen, Essen, Germany

* Correspondence: mgotte@uni-muenster.de

Supplementary Table S1. TaqMan assay IDs (Thermo Fisher)

TaqMan-Sonden	Assay ID
Aktin	Hs999999903
MSI-1	Hs00159291
MSI-2	Hs00292670

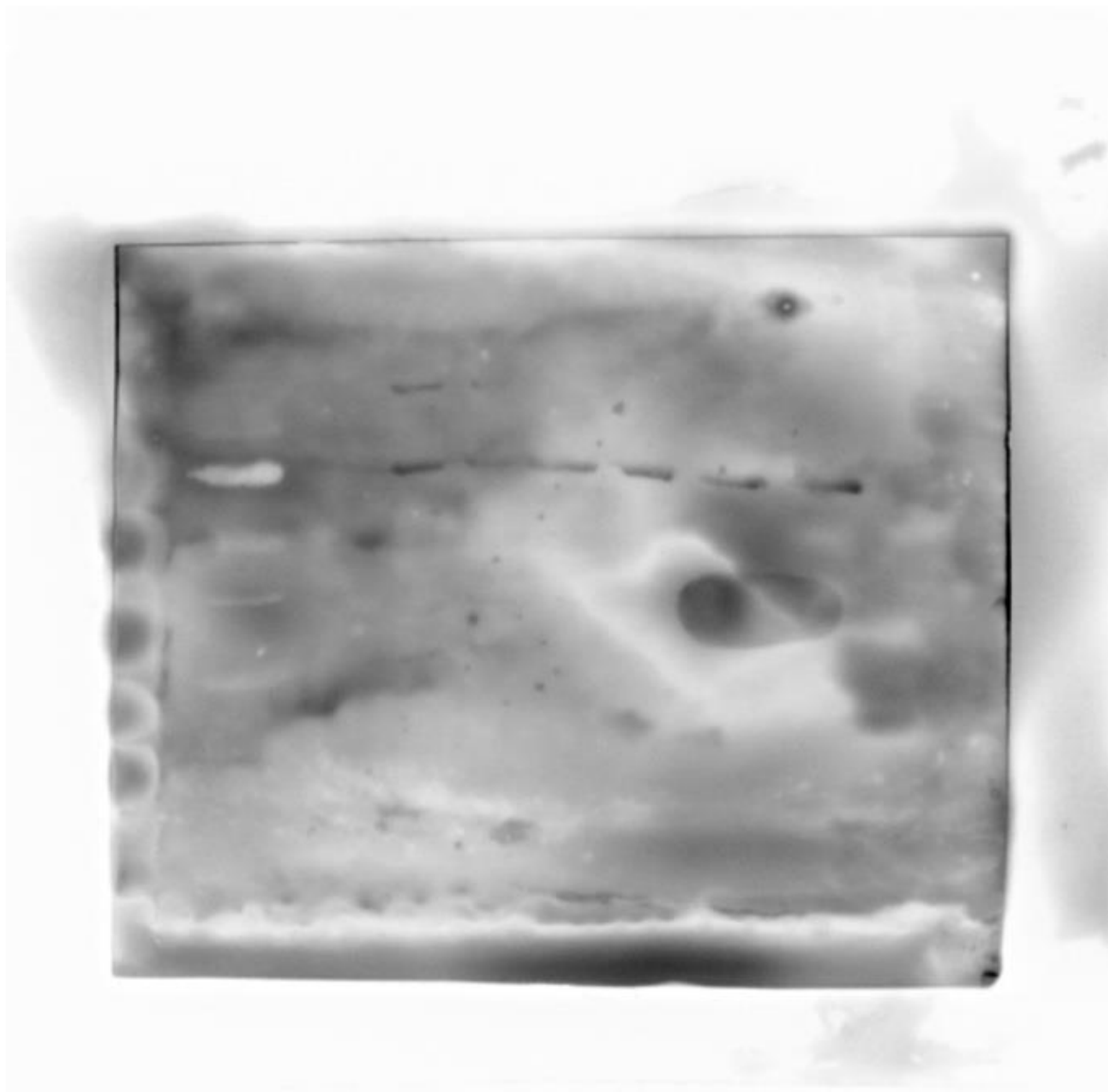
Supplementary Table S2. SYBR green PCR primer sequences

SYBR green PCR primers	Primer sequence
SOX-2 (forward primer)	TGG CGA ACC ATC TCT GTG GT
SOX-2 (reverse primer)	CCA ACG GTG TCA ACC TGC AT
AKTIN (forward primer)	CAA AGA CCT GTA CGC CAA CAC
AKTIN (reverse primer)	CAT ACT CCT GCT TGC TGA TCC
Notch-1 (forward primer)	GGT GAG ACC TGC CTGA ATG
Notch-1 (reverse primer)	GTT GGG GTC CTG GCA TC
Notch-2 (forward primer)	AAC TGT CAG ACC CTG GTG AAC

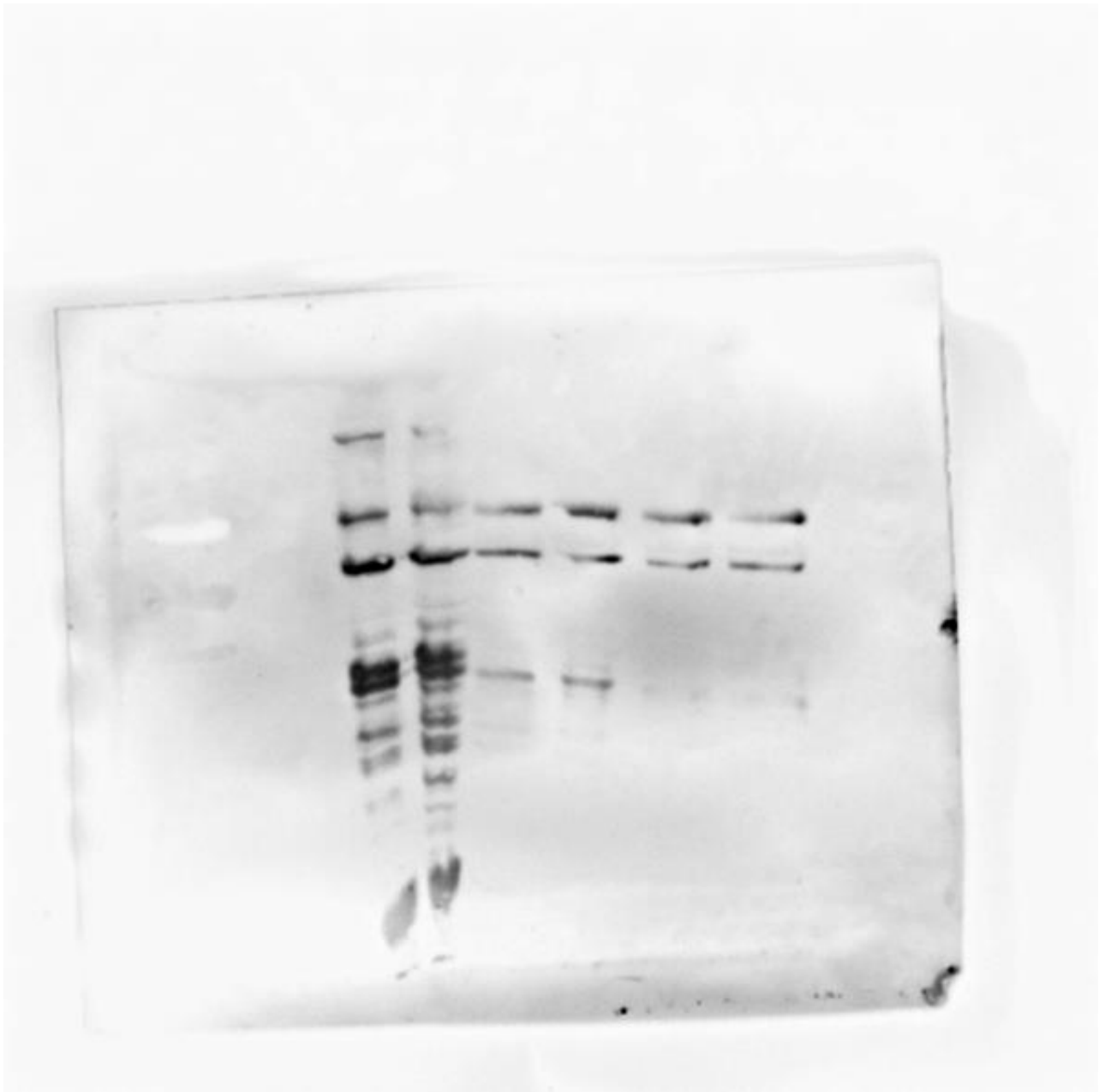
Notch-2 (reverse primer)	CGA CAA GTG TAG CCT CCA ATC
Notch-3 (forward primer)	TGT GCA AAT GGA GGT CGT
Notch-3 (reverse primer)	CCT GAG TGA CAG GGG TCC T
Numb (forward primer)	GGCACCACAATCTCCTACCTTC
Numb (reverse primer)	TGGTTTCACGCACAGGCATTGC
HES-1 (forward primer)	GTGAAGCACCTCCGGAAC
HES-1 (reverse primer)	CGTTCATGCACTCGCTGA
HES 2 (forward primer)	AACCAGAGCCTGAGCCAGCTTA
HES 2 (reverse primer)	TGCAGGAAGCGCACGGTCATTT
HEY-1 (forward primer)	GAGATCCTGCAGATGACCGT
HEY-1 (reverse primer)	AGATAACGCGCAACTTCTGC
HEY-2 (forward primer)	TTGCCCATGCCTAAACTAGTGC
HEY-2 (reverse primer)	TCTCACGTGCTTGATTTACGCATA
KLF-4 (forward primer)	GCCTAAATGATGGTGCTTGGTG
KLF-4 (reverse primer)	GCAGTTTGAAAACCTTTGGCTTCC
OCT-4 (forward primer)	CTGGAGTTTGTGCCAGGGTTT
OCT-4 (reverse primer)	CTTCACCTTCCCTCCAACCAG
LIF-R (forward primer)	TCTTGCGAGCCTATACAGAT
LIF-R (reverse primer)	TCTGGATTTGGAATATCAGG
Tert (forward primer)	GGAGCAAGTTGCAAAGCATTG
Tert (reverse primer)	TCCCACGACGTAGTCCATGTT

Supplementary Table S3 Antibodies used for western blotting

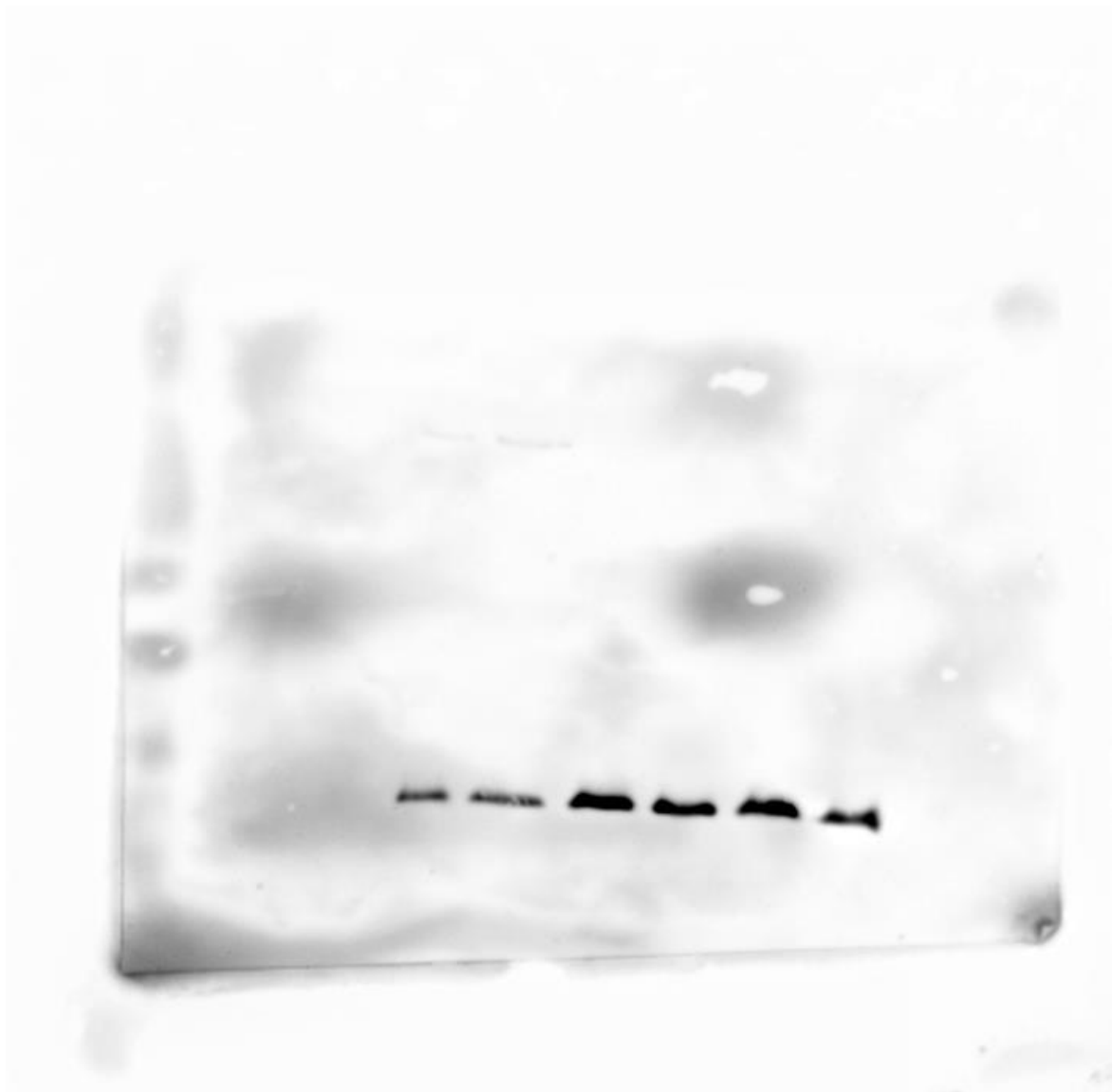
Primary antibody (manufacturer)	Secondary antibody	Dilution (1.Ab/2.Ab)
Musashi-1 (Santa Cruz)	Anti-Mouse IgG	1:200
Musashi-2 (Abnova)	Anti-Mouse IgG	1:2000
p21 (Cell Signaling)	Anti-Rabbit IgG	1:1.000
FOXA2 (Cell Signaling)	Anti-Rabbit IgG	1:1000
Notch 3 (Cell Signaling)	Anti-Rabbit IgG	1:1000
Alpha-Tubulin (Santa Cruz)	Anti-Mouse IgG	1:4.000



Supplementary Figure S1- Western Blot for Notch 3 - Lane 1: control 12-Z, lane 2: MSI-1- and MSI-2-double-knockdown, lane 3 and 4: patient 2 control, lane 5 and 6: patient 2 MSI-1- and MSI-2-double-knockdown, Left lane = Molecular weight markers



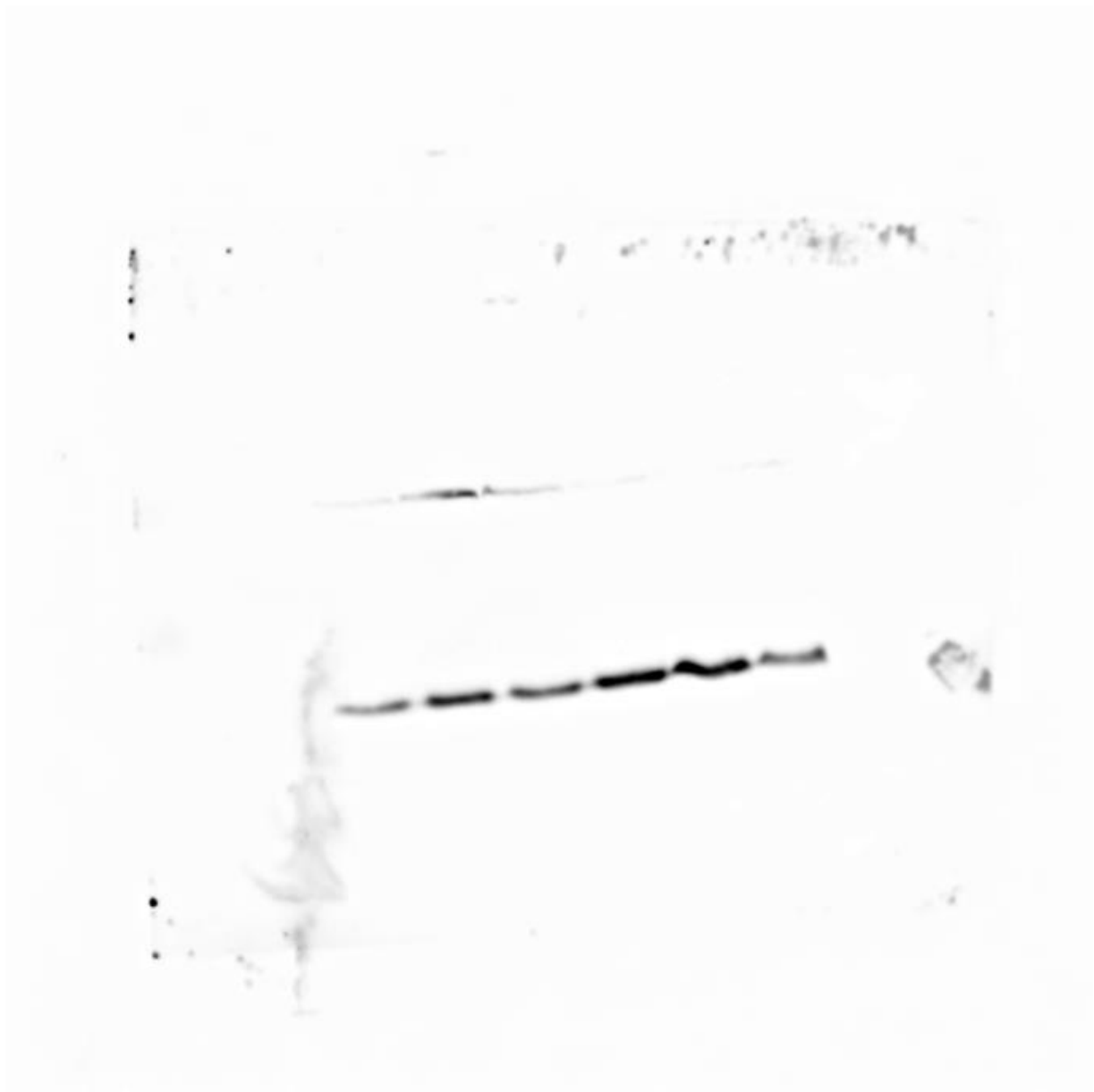
Supplementary Figure S2- Western Blot for Tubulin corresponding to samples shown in Fig. S1 - Lane 1: control 12-Z, lane 2: MSI-1- and MSI-2-double-knockdown, lane 3 and 4: patient 2 control, lane 5 and 6: patient 2 MSI-1- and MSI-2-double-knockdown Left lane = Molecular weight markers



Supplementary Figure S3- Western Blot for Foxa2 - Lane 1: control 12-Z, lane 2: MSI-1- and MSI-2-double-knockdown, lane 3 and 4: patient 2 control, lane 5 and 6: patient 2 MSI-1- and MSI-2-double-knockdown



Supplementary Figure S4- Western Blot for Tubulin corresponding to samples of Figure S3.
- Lane 1: control 12-Z, lane 2: MSI-1- and MSI-2-double-knockdown, lane 3 and 4: patient 2 control, lane 5 and 6: patient 2 MSI-1- and MSI-2-double-knockdown



Supplementary Figure S5- Western Blot for p21 in 12-Z cells - Lane 1-3: control, lane 4-6: MSI-1- and MSI-2-double-knockdown



Supplementary Figure S6- Western Blot for Tubulin in 12-Z cells, samples correspond to figure S5 - Lane 1-3: control, lane 4-6: MSI-1- and MSI-2-double-knockdown