

GR-star	(1)	--PATFKLCAGISYRHMNRMTGLRKNALVAIHHELNRLAGPGPSNWISQVHRRSSLLSSR
JSB-star	(1)	MLPATFKLCAGISYRHMNRMTGLRKNAMVAIHHELNRLAGPGPSNWISQVRRRSSLLSSR
JA-star	(1)	MLPATFKLCAGISYRHMNRMTGLRKNAMVAIHHELNRLAGPGPSNWISQVRRRSSLLSSR
GSB-star	(1)	MLPATFKLCAGISYRHMNRMTGLRKNAMVAIHHELNRLAGPGPSNWISQVRRRSSLLSSR
LMB-star	(1)	MLPATFKLCAGISYRHMNRMTGLRKNAMVAIHHELNRLAGPGPSNWISQVRRRSSLLSSR
AC-star	(1)	MLPTTFKLCAGISYRHMNRMTGLRKNAMVAIHHELNRLAGPGSSNWISQVRRRSSFLGAR
ZFH-star	(1)	MLPATFKLCAGISYRHMNRMTGLRKNAMIAIHHELNLKLSGPGASTWINHIRRSSLLSSP * . ***** . ***** . * : * * . : * . * * : . . . ***** . * . . .
GR-star	(59)	IEEEQRYSEEEMSIVKQGENALQKAINILGEQDGTIETVAANGDKVLSKVLDPDIGKVF
JSB-star	(61)	IEEEKGYNEEEMSIVKQGEDALQKAISILSEQDGTIETVAANGDKVLSKMLPDIGKVF
JA-star	(61)	IKKEEDGYSEEEMSIVKQGEDALQKAIGILSEQDGTIETVAANGDKVLSKVLDPVGKVF
GSB-star	(61)	IREVEGYSEAEMSIVKQGEDALQKAISILSEQDGTIETVAANGDKVLSKTLDPDIGKVF
LMB-star	(61)	IEEEEGYSDEEMSIVKQGEDALQKAISILSDQDGTTEIVAANGDKVLSKMLPDIGKVF
AC-star	(61)	IEEEQGYSEQEMSIVKQGEDALQKAISILSEQDGTLETVAANGDKVLSKMLPDIGKVF
ZFH-star	(61)	IAEET-YSEADQCYVQQQGEALQKSISILEDQDGTQTEIESINGEKVMSKVLPGIGKVF * * . * * * . * * . * * . * : * * . : * * * . : * : . . . * * . * * . * * * . : * * * * *
GR-star	(119)	LEVMLEQHPDLYEELVGNMEQMGEWNPVVKQVKILQKIGQDTMTHEVSAETPGNVVGP
JSB-star	(121)	LEVMLEQHPDLYEELVGNMEQMGEWNPVKKVKILQKIGQDTMTHEVSAETPGNVVGP
JA-star	(121)	LEVMLEQHPENLYEELVGKMEQMGEWNPVVKQVKILQKIGQDTMTHEVSAETPGNVVGP
GSB-star	(121)	LEVMLEQHPDLYEELVGNMEQMGEWNPVVKQVKILQKIGQDTMTHEVSAETPGNVVGP
LMB-star	(121)	LEVMLEQRPDLYKELVGNMEQMGEWNPVVKQVKILQKIGQDTMTHEVSAETPGNVVGP
AC-star	(121)	LEVMLEQHPDLYEELVGNMEQMGEWNPVVKQVKILQKIGKETMTHEVSAETPGNVVGP
ZFH-star	(121)	LEVTLQQTGDLYDELVDNMEQMGEWNPVVKQVKILQKIGQETMITHEISAETPGNVVGP * * . * * . : . : * * . * * . : * * * . * * * * . * * * * * . : * * . * * . * * * * * * * * *
GR-star	(179)	RDLVSVRCAKRRGSTCFLAGMSTQHAKMPEQRGVVRAENGPTCIVMKPCAEDPNKTKFTW
JSB-star	(181)	RDFVSVRCAKRRGSTCFLAGMSTQHPKMPEQRGVIRAENGPTCIVMKPCAEDPNKTKFTW
JA-star	(181)	RDFVSVRCAKRRGSTCFLAGMSTQHPRMPEQRGVVRAENGPTCIVMKPCAEDPNKTKFTW
GSB-star	(181)	RDFVSVRCAKRRGSTCFLAGMSTQHPKMPEQRGVVRAENGPTCIVMKPCAEDPNKTKFTW
LMB-star	(181)	RDFVSVRCAKRRGSTCFLAGMSTQHPKMPEQRGVVRAENGPTCIVMKPCVEDPNKTKFTW
AC-star	(181)	RDFVSVRCAKRRGSTCFLAGMSTKHPTMPEQRGVVRAENGPTCIVLKPCAEDPNKTKFTW
ZFH-star	(181)	RDFVNVRAKRRGSTCFLAGMSTQHPGMPEQKGFVRAENGPTCIVMRPSADDPNKTKFTW * * . * . * * . * * * * * * * * * . * . : * * * . * . . * * * * * * * . : * * . * * . * * * * * * * *
GR-star	(239)	LLSIDLKGWIPKTIINKVLSQTQV-----
JSB-star	(241)	LLNIDLKGWIPKTIINKVLSQTQVDFANHLRQRMANNVSMEMAHAC
JA-star	(241)	LLSIDLKGWIPKTIINKVLSQTQVDFANHLRQRMANNVSMEMAHAC
GSB-star	(241)	LLNIDLKGWIPKTIINKVLSQTQVDFANHLRQRMANNVSMEMAHAC
LMB-star	(241)	LLNIDLKGWIPKTIINKVLSQTQVDFANHLRQRMANNVSMEMAHAC
AC-star	(241)	LLNIDLKGWIPKTIINKVLFQTQVDFASHLRQMAHNVFMEMAHAC
ZFH-star	(241)	LLSLDLKGWIPKTVINRVLSQTQVDFVNHLRDRMASGGGIDAIAIC * * : . * * * * * * * : * . : * * . * * *

Figure S1.

GR-Sf1	(1)	-----
JF-Sf1	(1)	MLPKVETESLGLSRSYGEHRHMPRIMQAPQIKMMDYSYDEDLDEMCPVCGDKVSGYHYGL
ESB-Sf1	(1)	MLPKVETESLGLSRSYGEQGHMPRNMQAPQLKMDYSYDEDLDEMCPVCGDKVSGYHYGL
LMB-Sf1	(1)	-----MMDYSYDEDLDEMCPVCGDKVSGYHYGL
BP-Sf1	(1)	MLPKVETESLGLARSYGEQGHMPRNMQAHQLKMDYSYDEDLDEMCPVCGDKVSGYHYGL
OH-Sf1	(1)	-----MMDYSYDEDLDEMCPVCGDKVSGYHYGL
ZFH-Sf1	(1)	MLPKVESEYLGLARSHGEQGHMPGNMQAPQFKMMDYSYDEDLDEMCPVCGDKVSGYHYGL
GR-Sf1	(1)	--ESCKGFFKRTVQNNKRYTCIENQSCQIDKTQRKRCPYCRFQKCLTVGMKLEAVRADR
JF-Sf1	(61)	LTCECKGFFKRTVQNNKRYTCIENQSCQIDKTQRKRCPYCRFQKCLTVGMKLEAVRADR
ESB-Sf1	(61)	LTCECKGFFKRTVQNNKRYTCIENQSCQIDKTQRKRCPYCRFQKCLTVGMKLEAVRADR
LMB-Sf1	(29)	LTCECKGFFKRTVQNNKRYTCIENQSCQIDKTQRKRCPYCRFQKCLTVGMKLEAVRADR
BP-Sf1	(61)	LTCECKGFFKRTVQNNKRYTCIENQSCQIDKTQRKRCPYCRFQKCLTVGMKLEAVRADR
OH-Sf1	(29)	LTCECKGFFKRTVQNNKRYTCIENQSCQIDKTQRKRCPYCRFQKCLTVGMKLEAVRADR
ZFH-Sf1	(61)	LTCECKGFFKRTVQNNKRYTCIENQSCQIDKTQRKRCPYCRFQKCLTVGMKLEAVRADR

GR-Sf1	(58)	MRGGRNKFGPMYKRDRAKQKKALIRANGLKIEAMSQVMQAVPTDLTISSAIQNIHSAA
JF-Sf1	(121)	MRGGRNKFGPMYKRDRAKQKKALIRANGLKIEAMTQVMQAVPTDLTISSAIQNIHSAA
ESB-Sf1	(121)	MRGGRNKFGPMYKRDRAKQKKALIRANGLKIEAMTQVMQAVPTDLTISSAIQNIHSAA
LMB-Sf1	(89)	MRGGRNKFGPMYKRDRAKQKKALIRANGLKIEAMTQVMQAVPTDLTISSAIQNIHSAA
BP-Sf1	(121)	MRGGRNKFGPMYKRDRAKQKKALIRANGLKIEAMTQVMQAVPTDLTISSAIQNIHSAA
OH-Sf1	(89)	MRGGRNKFGPMYKRDRAKQKKALIRANGLKIEAMSQVMQAVPTDLTISSAIQNIHSAA
ZFH-Sf1	(121)	MRGGRNKFGPMYKRDRAKQKKALIRANGLKIEAMTQVMQAVPTDLTISSAIQNIHSAS
		*****.***.***.***.***.*****.
GR-Sf1	(118)	SKGLPLSHHPGHHTG---HHHHHHHHHATALPPTYDRSPFVTSFVSMAMPPHAGSLQGYQ
JF-Sf1	(181)	SKGLPLSHHAGHHTG-HHHHHHHHHHATALPPTYDRSPFVTSFVSMAMPPHAGSLQGYQ
ESB-Sf1	(181)	SKGLPLSHHAGHHTG-HHHHHHHHHHATALPPTYDRSPFVTSFVSMAMPPHAGSLQGYQ
LMB-Sf1	(149)	SKGLPLSHHPGHHTG-HHHHHHHHHHATALPPTYDRSPFVTSFVSMAMPPHAGSLQGYQ
BP-Sf1	(181)	SKGLPLSHHTGHHAG-HHHHHHHHHHATALPPTYDRSPFVTSFVSMAMPPHAGSLQGYQ
OH-Sf1	(149)	SKGLPLSHHAGHHTGHHHHHHHHHYHHATALPPTYDRSPFVTSFVSMAMPPHAGCLQGYQ
ZFH-Sf1	(181)	KG----LPLSHHHHHHHHHSSSAGLPPADFDSPFVTSFVSMAMPPHAGGLQGYQ
	*... *****:.....*.*.*****:*****
GR-Sf1	(175)	AAYGHFQGTRTIKSEYP-----
JF-Sf1	(240)	AAYGHFQGTRTIKSEYPDPYTSSPESIMGYAYVDAYQSGSPPSFPHLIVELLKCEPDEPQ
ESB-Sf1	(240)	AAYGHFQGTRTIKSEYPDPYTSSPESIMGYAYVDAYQSGSPPSFPHLIVELLKCEPDEPQ
LMB-Sf1	(208)	AAYGHFQGTRTIKSEYPDPYTSSPESIMGYAYVDAYQSGSPPSFPHLIVELLKCEPDEPQ
BP-Sf1	(240)	AAYGHFQGTRTIKSEYPDPYTSSPESIMGYAYVDAYQSGSPPSFPHLIVELLKCEPDEPQ
OH-Sf1	(209)	AAYGHFQGTRTINFEYPDPYTSSPESIMGYAYVDAYQSGSPPSFPHLIVELLKCEPDEPQ
ZFH-Sf1	(236)	AYG--HFQSRTIKSEYPDPYTSSPESLMGYPYVEAYAGGSPPSFPHLIVELLKCEPDEPQ
		*..***.***
GR-Sf1	(191)	-----
JF-Sf1	(300)	VQAKILAYLQQEQASRGKHEKLNTFGLMCKMADQTLFSIVEWARSSIFFRELKVDDQMKL
ESB-Sf1	(300)	VQAKILAYLQQEQASRGKHEKLNTFGLMCKMADQTLFSIVEWARSSIFFRELKVDDQMKL
LMB-Sf1	(268)	VQAKILAYLQQEQASRGKHEKLNTFGLMCKMADQTLFSIVEWARSSIFFRELKVDDQMKL
BP-Sf1	(300)	VQAKILAYLQQEQASRGKHEKLNTFGLMCKMADQTLFSIVEWARSSIFFRELKVDDQMKL
OH-Sf1	(269)	VQAKILAYLQQEQASRGKHEKLNTFGLMCKMADQTLFSIVEWARSSIFFRELKVDDQMKL
ZFH-Sf1	(294)	VQAKILAYLQQEQASRGKHEKLNTFGLMCKMADQTLFSIVEWARSSIFFRELKVDDQMKL
GR-Sf1	(191)	-----
JF-Sf1	(360)	LQNCWSELLILDHVFRQVVHAKESILLVTGQQVDYAVIASQAGATLNNLLSHAQELVAK
ESB-Sf1	(360)	LQNCWSELLILDHVFRQVVHAKESILLVTGQQVDYAVIASQAGATLNNLLSHAQELVKG
LMB-Sf1	(328)	LQNCWSELLILDHVFRQVVHAKESILLVTGQQVDYAVIASQAGATLNNLLSHAQELVAK
BP-Sf1	(360)	LQNCWSELLILDHVFRQVVHAKESILLVTGQQVDYAVIASQAGATLNNLLSHAQELVAK
OH-Sf1	(329)	LQNCWSELLILDHVFRQVVHAKESILLVTGQQVDYAMIASQAGATLNNLLSHAQELVTR
ZFH-Sf1	(354)	LQNCWSELLILDHVFRQVMHAKESILLVTGQQVDYALIASQAGATLNNLLSHAQELVSK
GR-Sf1	(191)	-----
JF-Sf1	(420)	LRSLQLDQREFVCLKFLVLVFLSLDVKNLENFHLVESVQEQVNAALLDYVMCNPQQTDKFG
ESB-Sf1	(420)	LRSLQLDQREFVCLKFLVLVFLSLDVKNLENFHLVESVQEQVNAALLDYVMCNPQQTDKFG
LMB-Sf1	(388)	LRSLQLDQREFVCLKFLVLVFLSLDVKNLENFHLVESVQEQVNAALLDYVMCNPQQTDKFG
BP-Sf1	(420)	LRSLQLDQREFVCLKFLVLVFLSLDVKNLENFHLVESVQEQVNAALLDYVMCNPQQTDKFG
OH-Sf1	(389)	LRSLQLDQREFVCLKFLVLVFLSLDVKNLENFHLVESVQEQVNAALLDYVMCNPQQTDKFG
ZFH-Sf1	(414)	LRSLQLDQREFVCLKFLVLVFLSLDVKNLENFHLVESVQEQVNAALLDYVMCNPQQTDKFG
GR-Sf1	(191)	-----
JF-Sf1	(480)	QLLLRLPEIRAIISLQAEELYKHLNGDVPCNNLLIEMLHAKRA
ESB-Sf1	(480)	QLLLRLPEIRAIISLQAEELYKHLNGDVPCNNLLIEMLHAKRA
LMB-Sf1	(448)	QLLLRLPEIRAIISLQAEELYKHLNGDVPCNNLLIEMLHAKRA
BP-Sf1	(480)	QLLLRLPEIRAIISLQAEELYKHLNGDVPCNNLLIEMLHA---
OH-Sf1	(449)	QLLLRLPEIRAIISLQAEELYKHLNGDVPCNNLLIEMLHAKRA
ZFH-Sf1	(474)	QLLLRLPEIRAIISLQAEELYKHLNGDVPCNNLLIEMLHAKRA

Figure S2.

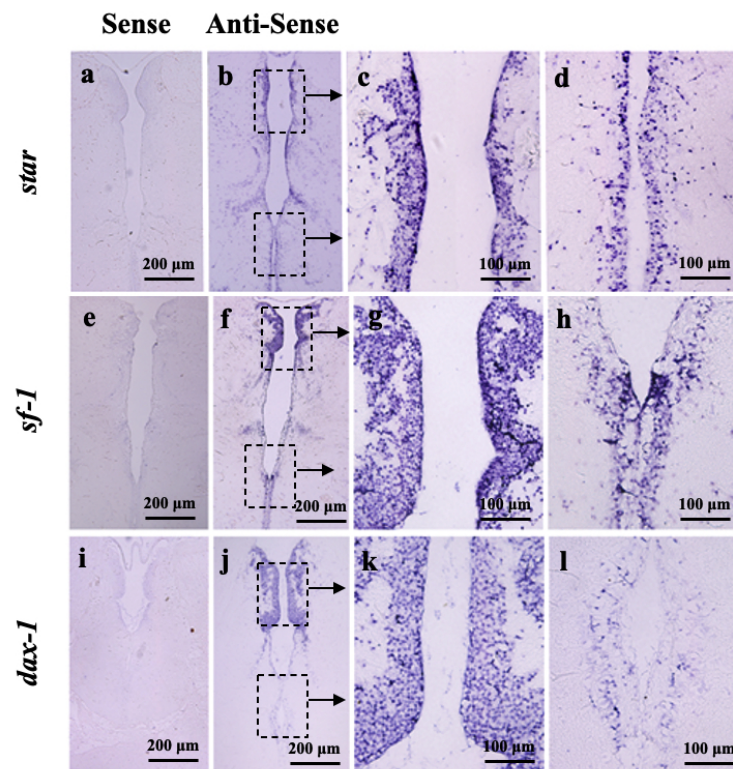


Figure S4.

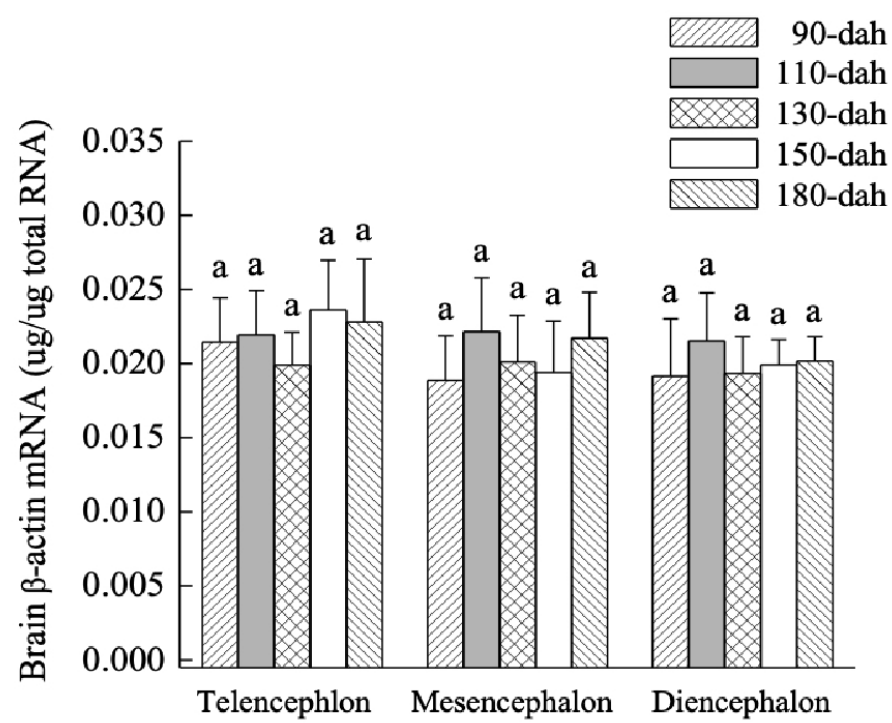


Figure S5.