

Heterogeneity within the LPS Structure in Relation to the Chosen Genomic and Physiological Features of the Plant Pathogen *Pectobacterium parmentieri*

Karolina Ossowska ¹, Agata Motyka-Pomagruk ², Natalia Kaczyńska ², Agnieszka Kowalczyk ¹, Wojciech Sledz ², Ewa Lojkowska ² and Zbigniew Kaczyński ^{1,*}

¹ Faculty of Chemistry, University of Gdansk, 63 Wita Stwosza, 80-308 Gdansk, Poland; karolinaoss@wp.pl (K.O.); agnieszka.kowalczyk@ug.edu.pl (A.K.)

² Intercollegiate Faculty of Biotechnology, University of Gdansk and Medical University of Gdansk, 58 Abrahama, 80-307 Gdansk, Poland; agata.motyka-pomagruk@ug.edu.pl (A.M.-P.); natalia.kaczynska@ug.edu.pl (N.K.); wojciech.sledz@biotech.ug.edu.pl (W.S.); ewa.lojkowska@biotech.ug.edu.pl (E.L.)

* Correspondence: zbigniew.kaczynski@ug.edu.pl

Figure S1. The HSQC spectrum of the OPS isolated from *P. parmentieri* SCC3193

Figure S2. The TOCSY spectrum of the OPS isolated from *P. parmentieri* SCC3193

Figure S3. The COSY spectrum of the OPS isolated from *P. parmentieri* SCC3193

Figure S1. The HSQC spectrum of the OPS isolated from *P. parmentieri* SCC3193.

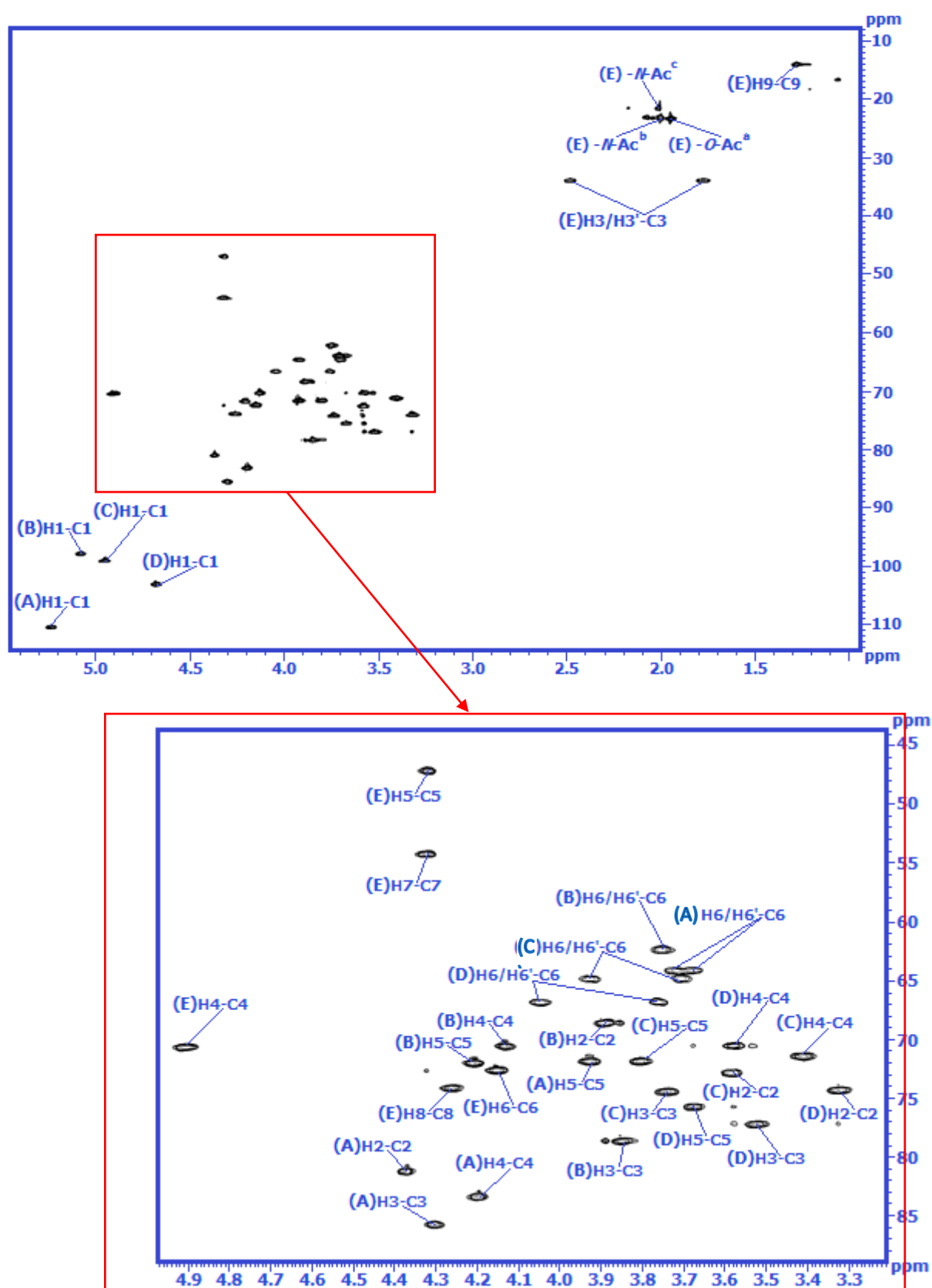


Figure S2. The TOCSY spectrum of the OPS isolated from *P. parmentieri* SCC3193.

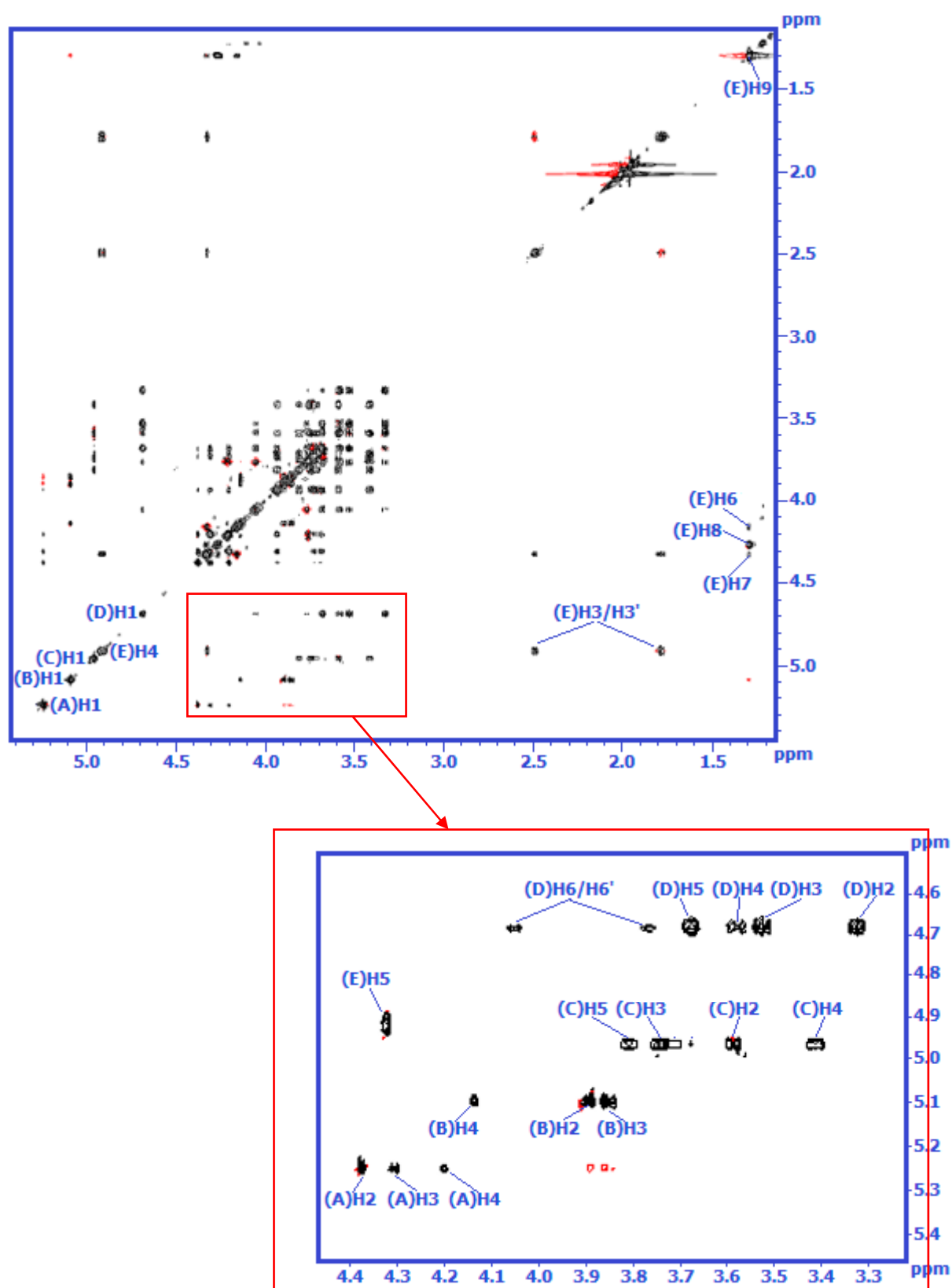


Figure S3. The COSY spectrum of the OPS isolated from *P. parmentieri* SCC3193.

