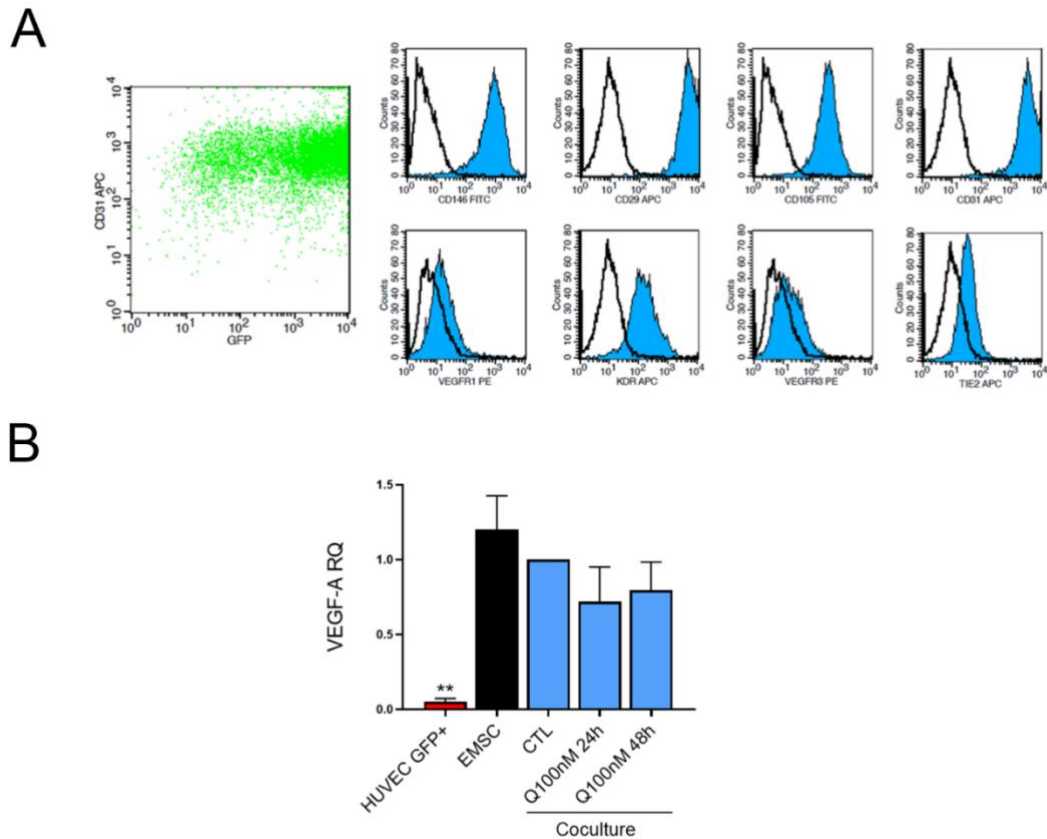


# **Quinagolide treatment reduces invasive and angiogenic properties of Endometrial Mesenchymal Stromal Cells**

Corinne Iampietro<sup>1\*</sup>, Alessia Brossa<sup>1\*</sup>, Stefano Canosa<sup>2</sup>, Stefania Tritta<sup>1</sup>, Glenn E Croston<sup>3</sup>, Torsten M. Reinheimer<sup>4</sup>, Filippo Bonelli<sup>1</sup>, Andrea Carosso<sup>2</sup>, Gianluca Gennarelli<sup>2</sup>, Stefano Cosma<sup>2</sup>, Chiara Benedetto<sup>2</sup>, Alberto Revelli<sup>2</sup>, Benedetta Bussolati<sup>1\$</sup>

## **SUPPLEMENTARY DATA**

## Supplementary Figure S1



**Supplementary Figure S1. Phenotype of GFP<sup>+</sup> HUVECs and effect of quinagolide on VEGF-A expression by EMSC-HUVEC coculture.** **A:** Representative flow cytometry analysis of HUVEC GFP<sup>+</sup> cells, showing the expression of GFP and the typical HUVEC markers (CD146, CD29, CD105, CD31, VEGFR1, VEGFR2, VEGFR3 and TIE2). **B:** Real time PCR analysis showing the relative quantification (RQ) of VEGF-A in HUVECs, EMSCs at basal levels and after 48 h co-culture with HUVECs (Coculture, CTL), treated for 24 h or 48 h with 100 nM quinagolide (Q100nM 24h and Q100nM 48h, respectively). No significant effect of quinagolide was observed. Data are expressed as mean  $\pm$  SD of VEGF-A RQ, normalized to GAPDH and to CTL, of three independent experiments, performed on different EMSC lines. A-Nova was performed: \*\*= $p < 0.001$  respect to CTL.