

Supplementary Materials

Antitumor Effect of Regorafenib on MicroRNA Expression in Hepatocellular Carcinoma Cell Lines

Kei Takuma ¹, Shintaro Fujihara ¹, Koji Fujita ¹, Hisakazu Iwama ², Mai Nakahara ¹, Kyoko Oura ¹, Tomoko Tadokoro ¹, Shima Mimura ¹, Joji Tani ¹, Tingting Shi ¹, Asahiro Morishita ¹, Hideki Kobara ¹, Takashi Himoto ¹ and Tsutomu Masaki ^{1,*}

¹ Department of Gastroenterology and Neurology, Faculty of Medicine, Graduate School of Medicine, Kagawa University, 1750-1 Ikenobe, Miki-cho, Kita-gun, Kagawa 761-0793, Japan; takuma.kei@kagawa-u.ac.jp (K.T.); fujihara.shintaro@kagawa-u.ac.jp (S.F.); fujita.koji@kagawa-u.ac.jp (K.F.); nakahara.mai@kagawa-u.ac.jp (M.N.); oura.kyoko@kagawa-u.ac.jp (K.O.); tadokoro.tomoko@kagawa-u.ac.jp (T.T.); mimura.shima@kagawa-u.ac.jp (S.M.); tani.joji@kagawa-u.ac.jp (J.T.); shi.tingting@kagawa-u.ac.jp (T.S.); morishita.asahiro@kagawa-u.ac.jp (A.M.); kobara.hideki@kagawa-u.ac.jp (H.K.); himoto@chs.pref.kagawa.jp (T.H.)

² Life Science Research Center, Kagawa University, 1750-1 Ikenobe, Miki-cho, Kita-gun, Kagawa 761-0793, Japan; iwama.hisakazu@med.kagawa-u.ac.jp

* Correspondence: tmasaki@med.kagawa-u.ac.jp; Tel.: +81-87-891-2156

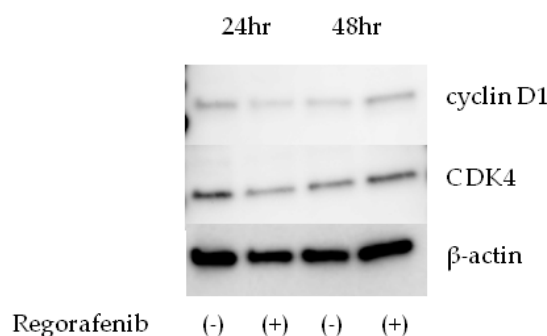


Figure S1. Western blot showing the expression of cyclin D1 and CDK4 in PLC/PRF/5 cells at 24 h and 48 h after the addition of 5 μ M regorafenib.