

Figure S1. EBF1/2 interacted with BES1.

The yeast two hybrid assay showed BES1 interacted with EBF1 and EBF2 in yeast.

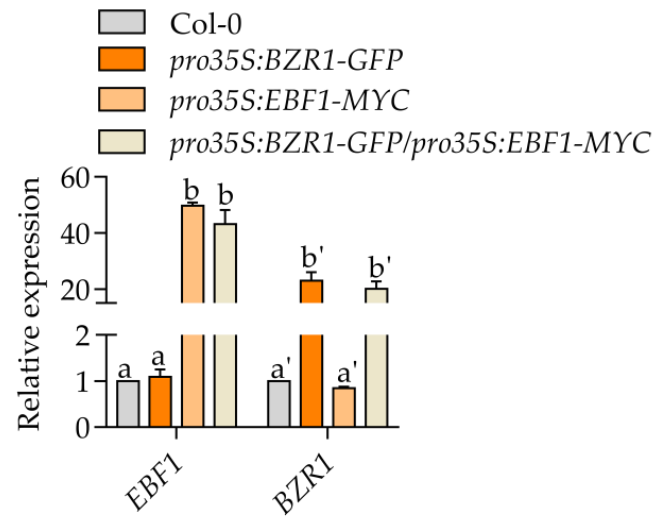


Figure S2. The expression level of *BZR1* and *EBF1* in the hybrid line.

Quantitative RT-PCR showed the *EBF1* and *BZR1* expression level in indicated plants. Total RNAs were extracted from 7-day-old seedlings grown on ½ MS medium. *PP2A* gene was analysed as an internal control. Error bars are SD of three biologic replicates. Different letters above bars indicate statistically significant differences between samples (One-way ANOVA followed by post-hoc Tukey test, $p < 0.05$).

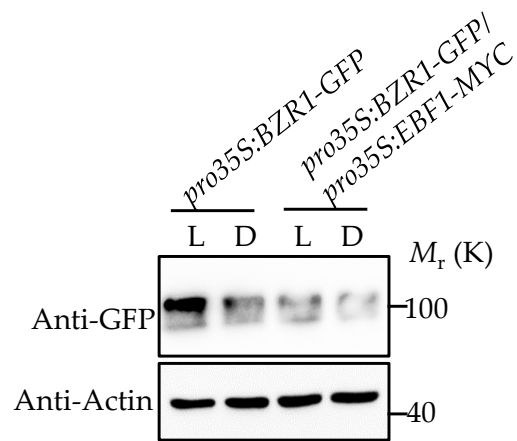


Figure S3. EBF1 promoted the degradation of BZR1 in darkness.

The protein level of BZR1 in transgenic Arabidopsis plants expressing *pro35S:BZR1-GFP* only or co-expressing *pro35S:EBF1-MYC* and *pro35S:BZR1-GFP*. Seedlings were grown on ½ MS medium for 7 days in white light then treated with or without darkness for 24h. BZR1 was detected with anti-GFP antibody. Actin was used as a control.

Table S1. Oligo primers Used in this Study

Gene cloning

Gene	Forward	Reverse
EBF1	ATGTCTCAGATCTTTAGTTTTG CC	GGAGAGGATGTCACATTTGTAA AG

CHIP-PCR

Gene	Forward	Reverse
PP2A ChIP	CGGCTTTCATGATTCCCTCT	GCCTTAAGCTCCGTTTCCTACT T
EBF1 CHIP	GAACCCCAATTCTCAGCTC	CGAGGAGATAGAGAGCGAAG

RT-PCR

Gene	Forward	Reverse
PP2A RT	TTCTCGCTCCAGTAATGGGATCC GA	GTTCTCCACAACCGCTTGGTGC ACT
SAUR15 RT	TTGAGGAGTTTCTTGGGTGCTAA G	GCCATGAATCCTCTTGGTGTGC
EXP8 RT	TCCTCCTCTTCAGCATTTTCGACCT	CTTGCCACGACTGTGTTTTGA GC
EBF1 RT	AGCAAAGTCCAGATTCTCAGT G	AGGAGGCCAATGCTTGAATCC C
BZR1 RT	GCAGATGTCTCAAATACTGCTG CCT	GACATGCCATTTGGGTTGCCT AG

Genotyping

Gene	Forward	Reverse
ebf1	AGCAATTGCTGTTGGAAGTCTGG T	TTCTCATGAACTGTGGCTCAA
LBI	GGCAATCAGCTGTTGCCCCGTCTCA CTGGTG	
pif1	CTCTTTTGGATCTTTCTGGGG	GACTTGCGCACGATAGCTAAC
pif3	AGTCTGTTGCTTCTGCTACGC	AAGAACCGGCAAAGATACCA C
pif4	AATTCATCATCGGGGATTAGG	TCGTCGTTTAATAAACACGGC
pif5	CGATTTGTTACCCATGGTTTG	CCTTGCTCGATTTTGTACG
LBb1.3	ATTTTGCCGATTCGGAAC	
ein3-1	GAGCAAGCTAGGAGGAAGAAAA TGTCTAG	TTTAGGCAAACCAAGTTGATG CCAC
eil1	GATCGTAATGGTCCAGCT	ATAAAGGATCCGAGCCACAA CCTCTTC