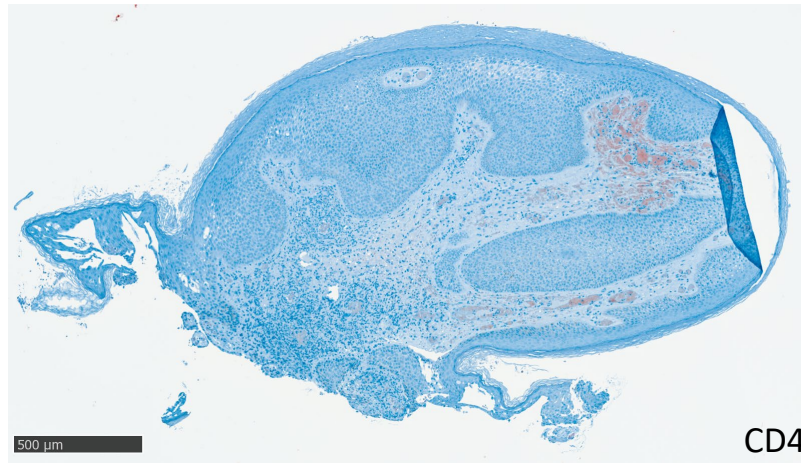
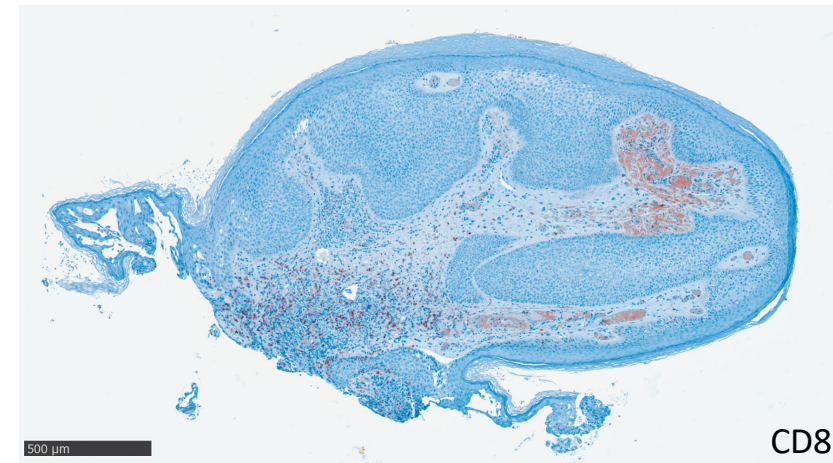


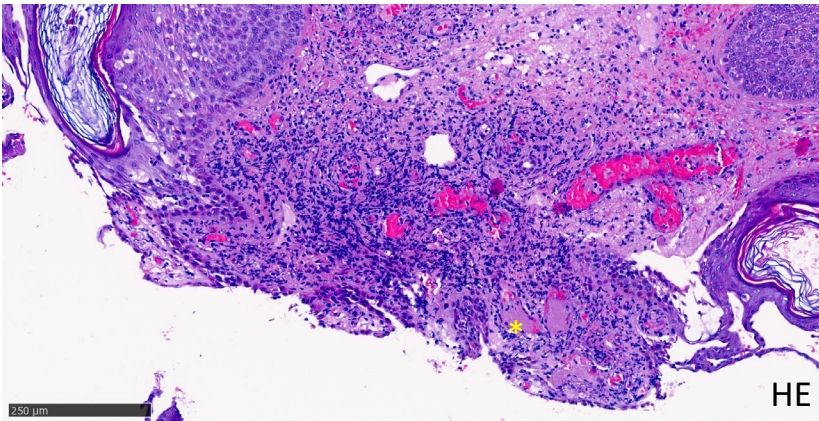
HE



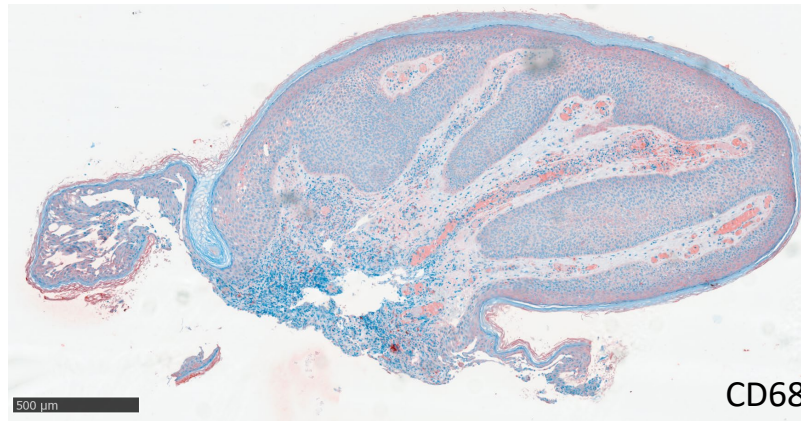
CD4



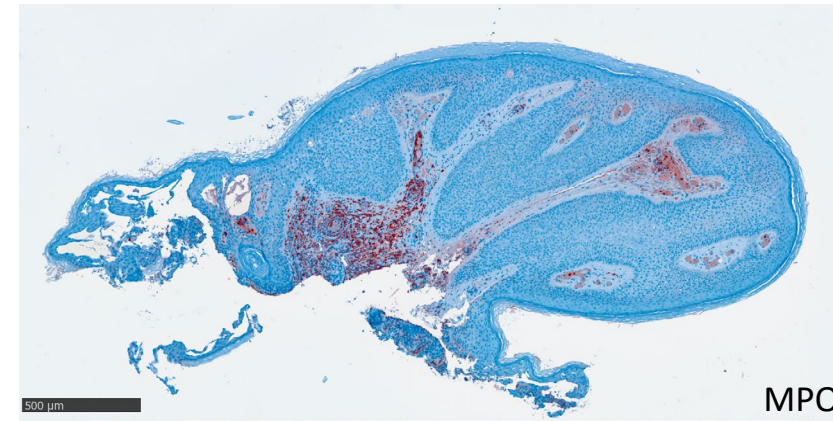
CD8



HE



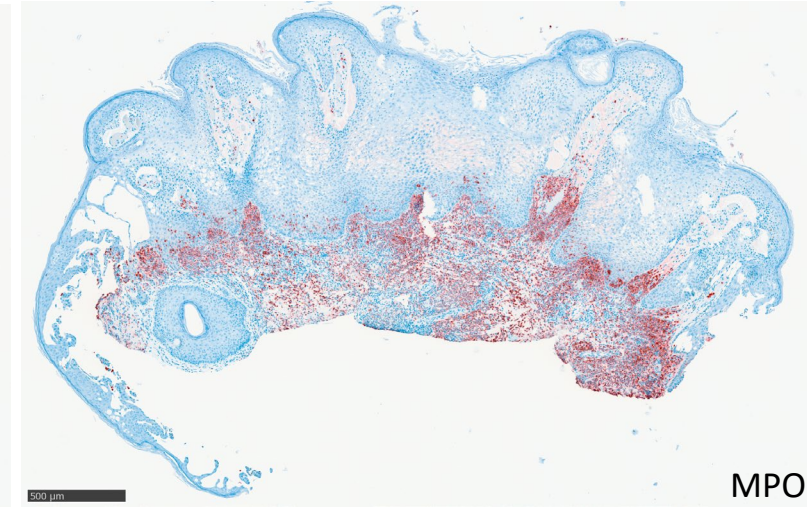
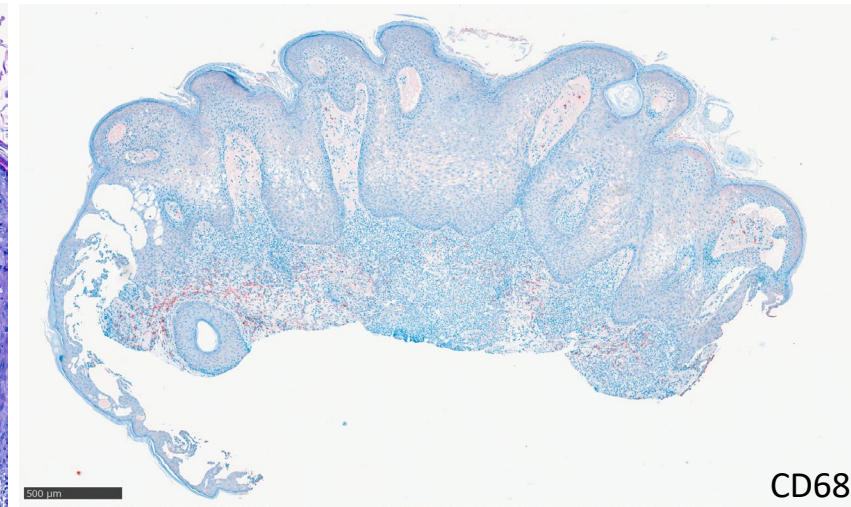
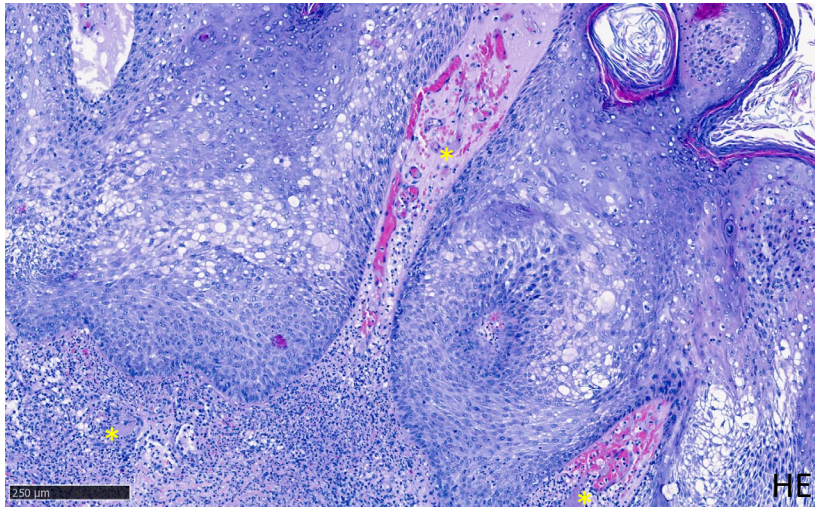
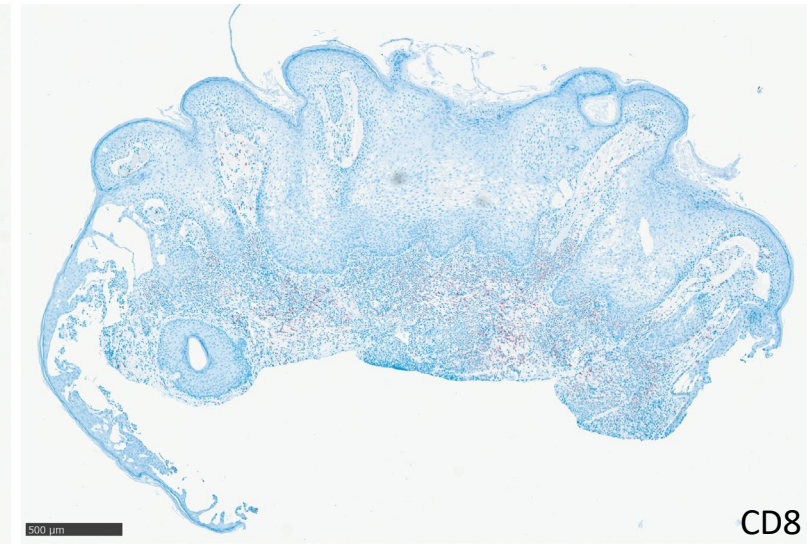
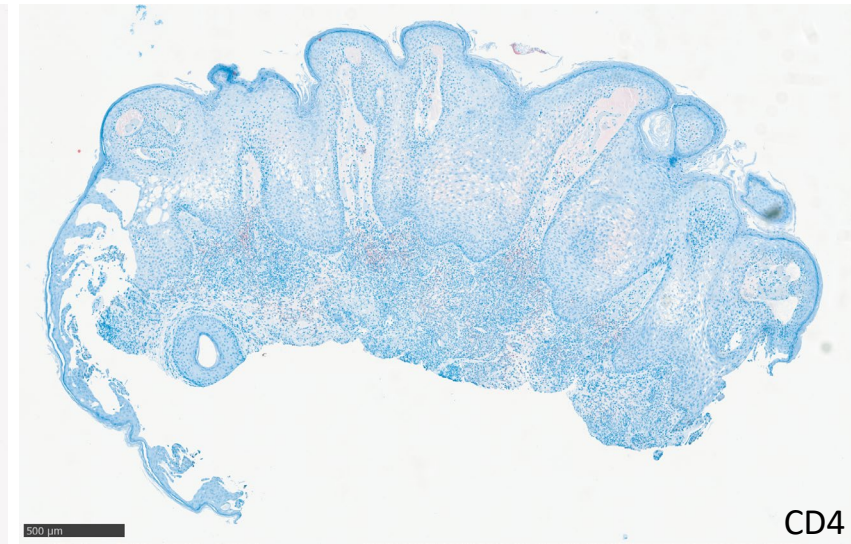
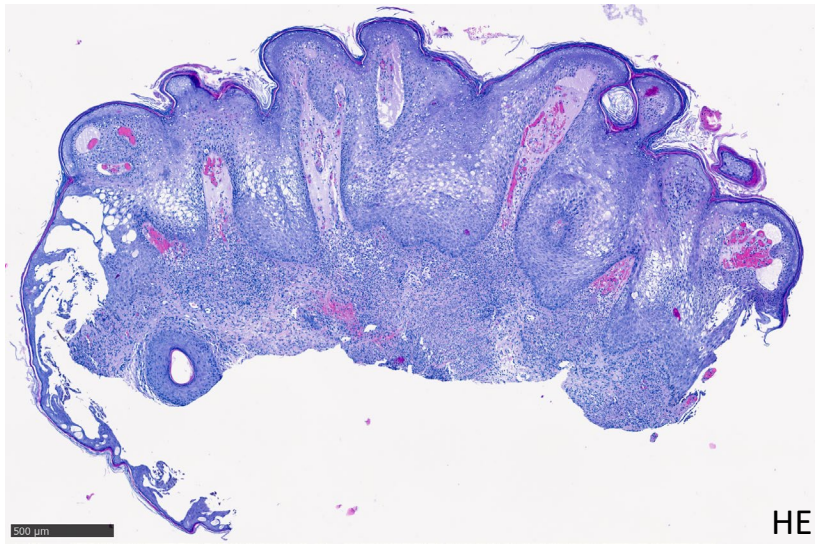
CD68



MPO

**Figure S1: Histology of patient 3 after 8 hours.** The HE stains showed fibrinoid thrombi in small vessels (yellow star). Immunohistochemically the inflammatory infiltrate was mixed with dominance of neutrophils.



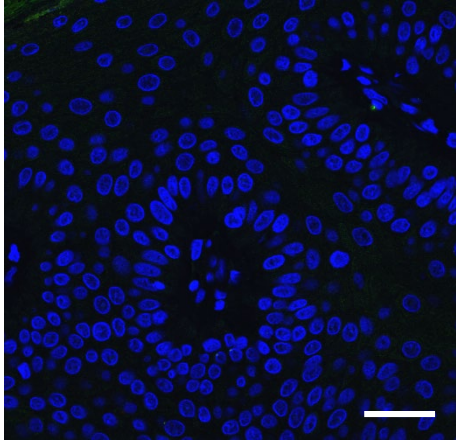


**Figure S2: Histology of patient 7 after 8 hours.** The HE stains showed fibrinoid thrombi in small vessels (yellow star). Immunohistochemically the inflammatory infiltrate was mixed with dominance of neutrophils.

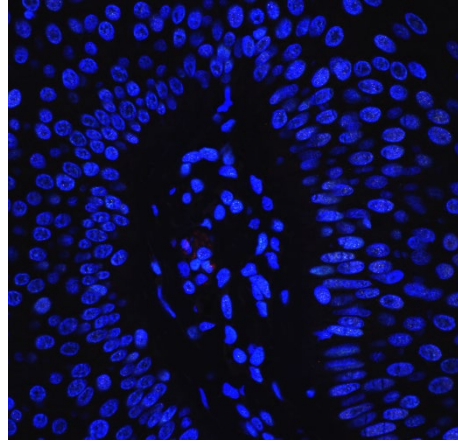


Patient 3

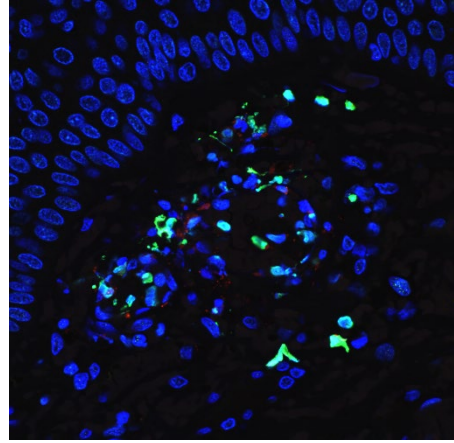
t0



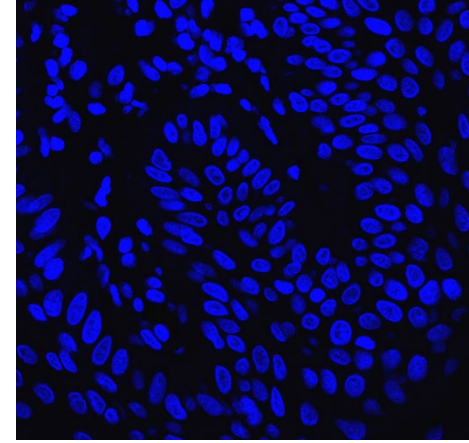
t3



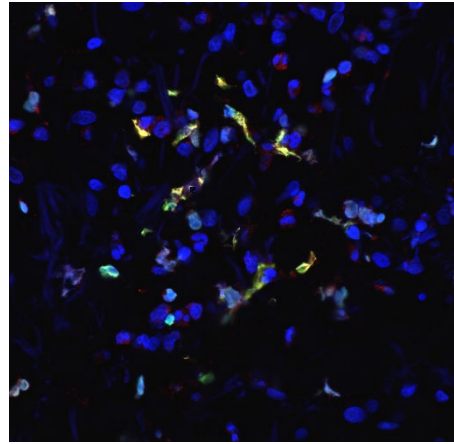
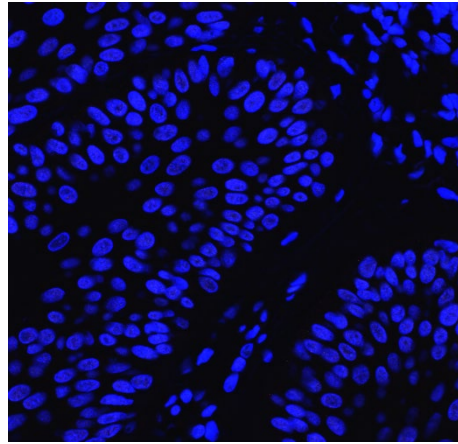
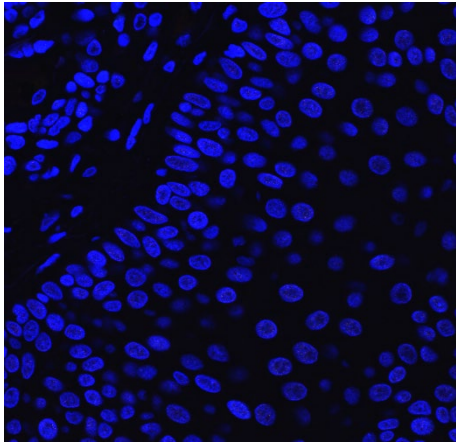
t8



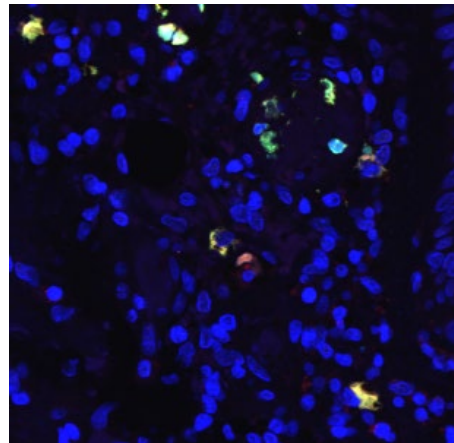
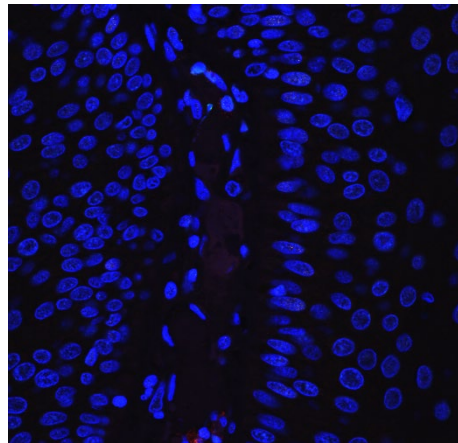
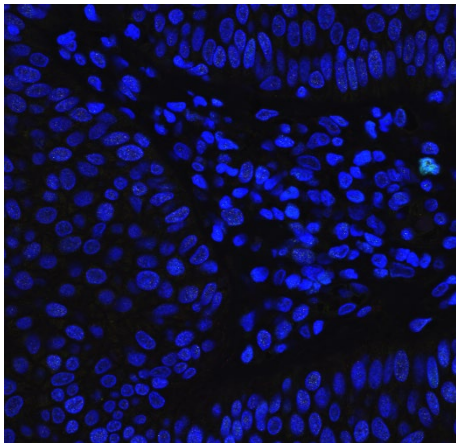
Isotyp (t8)



Patient 6



Patient 7



**Figure S3: Ingenol mebutate mediates Neutrophil extracellular trap (NET)-formation.** Tissue sections were stained for H3cit (green) as a marker of NET-formation and MPO (red) as a marker for neutrophils at the indicated time-points. Chromatin was stained with Hoechst (blue). After 8 hours (t8), neutrophil infiltration and NET-formation was visible. (scale bar 25  $\mu$ m)