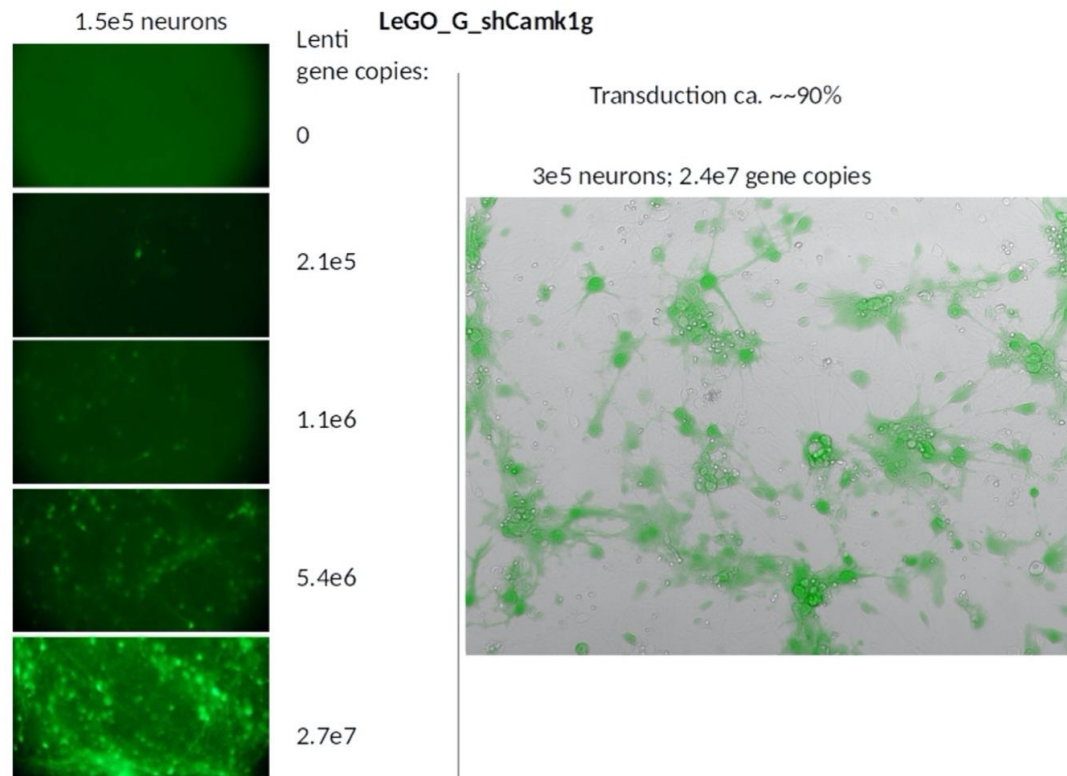
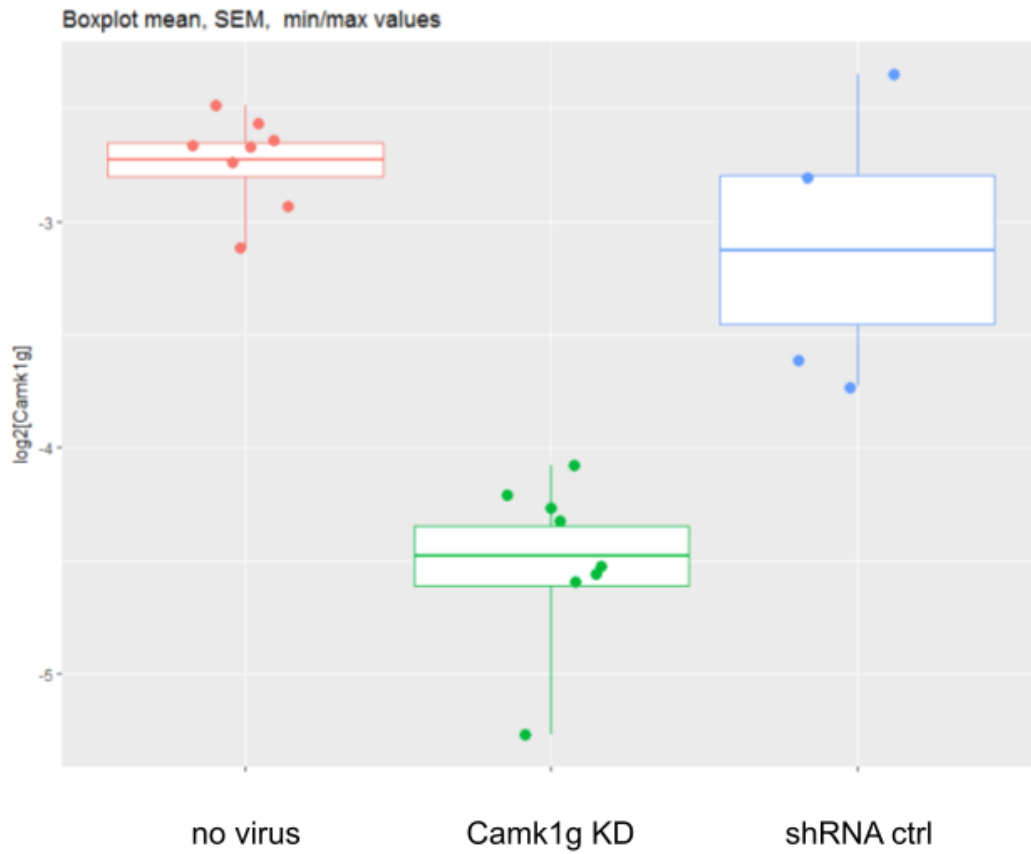


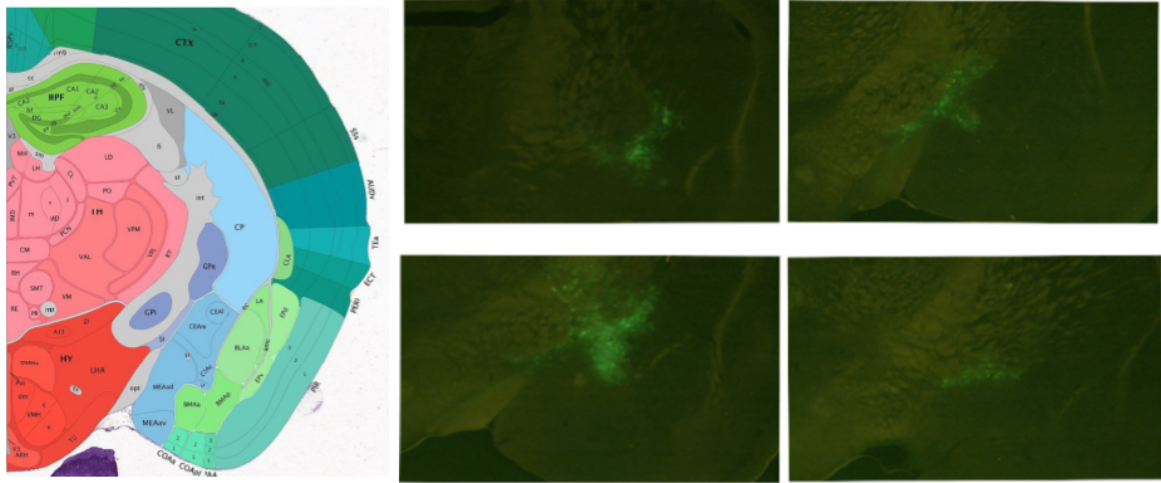
## Supplementary Figures



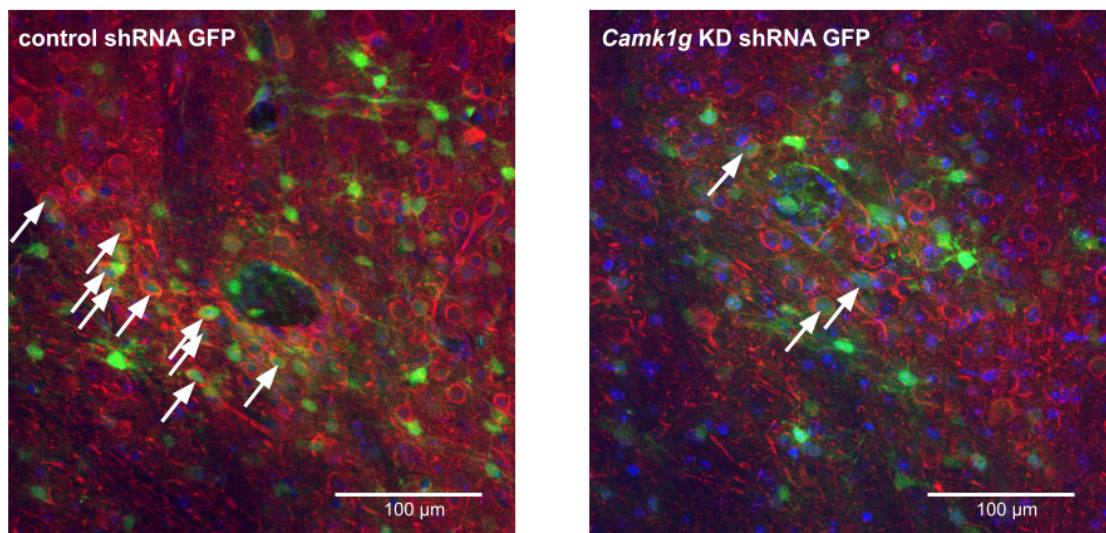
**Supplementary Figure S1.** Transfection efficiency based on the number of lentiviral particles used for primary neuronal culture transduction.



**Supplementary Figure S2.** Camk1g KD in primary neuronal cultures as validated by using qPCR. One-way ANOVA p-value 2.76e-07 \*\*\*, pairwise t-test p-values: Camk1g KD vs no virus 2.6e-07 \*\*\*, Camk1g KD vs shRNA ctrl 6.3e-05 \*\*\*, no virus vs shRNA ctrl 0.12.



**Supplementary Figure S3.** The precision of injection of lentiviral shRNA for *Camk1g* into the CeA. Left panel - image from the Allen mouse brain atlas showing the location of the slices where the images were taken. Right panel - images from four representative animals are shown. Green - GFP signal from the transgene.



**Supplementary Figure S4.** Representative immunofluorescence images of *Camk1g* KD effect in the CeA. Red - anti-*Camk1g* staining, green - GFP signal, blue - DAPI signal. Arrows point to cells having both GFP and anti-*Camk1g* signals. The number of cells positive for anti-*Camk1g* and GFP is lower in *Camk1g* KD animals and is generally associated with weak GFP fluorescence.