



Highly bright silica-coated InP/ZnS quantum dot-embedded silica nanoparticles as biocompatible nanoprobe

Kyeong-Min Ham^{1,†}, Minhee Kim^{1,†}, Sungje Bock¹, Jaehi Kim¹, Wooyeon Kim¹, Heung Su Jung², Jaehyun An^{1,3}, Hobeom Song³, Jung-Won Kim³, Hyung-Mo Kim^{1,4}, Won-Yeop Rho⁵, Sang-Hun Lee⁶, Seung-min Park⁷, Dong-Eun Kim^{1,*} and Bong-Hyun Jun^{1,*}

¹ Department of Bioscience and Biotechnology, Konkuk University, Seoul 05029, Republic of Korea

² Company of Global Zeus, Hwaseong, Gyeonggi-do 18363, Republic of Korea

³ Company of BioSquare, Hwaseong, Gyeonggi-do 18449, Republic of Korea

⁴ KIURI Research Center, Ajou University, Suwon, Gyeonggi-do 16499, Republic of Korea

⁵ School of International Engineering and Science, Jeonbuk National University, Jeonju 54896, Korea

⁶ Department of Chemical and Biological Engineering, Hanbat University, Daejeon 34158, Republic of Korea

⁷ Department of Urology, Stanford University School of Medicine, Stanford, 94305, United States

* Correspondence: kimde@konkuk.ac.kr (D.-E.K.), bjun@konkuk.ac.kr (B.-H.J.)

† K.-M.H. and M.K. contributed equally to this work

Received: date; Accepted: date; Published: date

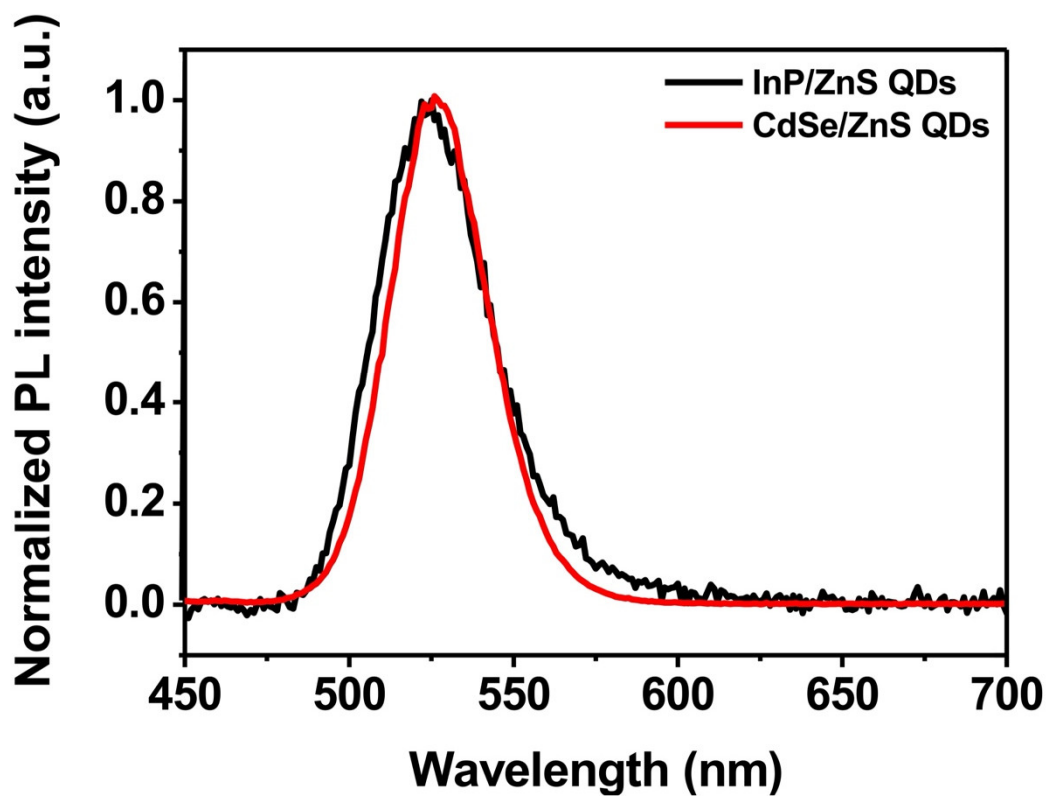


Figure S1. Comparison photoluminescence (PL) spectra between InP/ZnS QDs and CdSe/ZnS QDs.

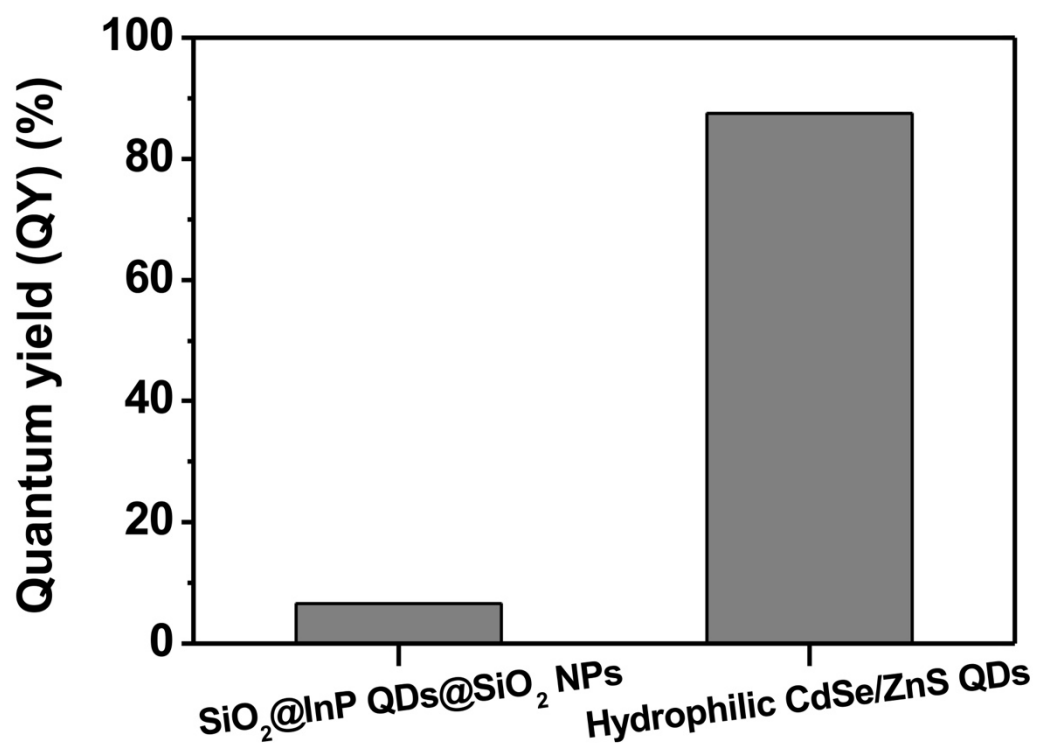


Figure S2. Comparison of quantum yield (QY) of SiO₂@InP QDs@SiO₂ NPs and hydrophilic CdSe/ZnS QDs. The QY of SiO₂@InP QDs@SiO₂ NPs and hydrophilic CdSe/ZnS QDs were 6.61% and 87.52%, respectively.

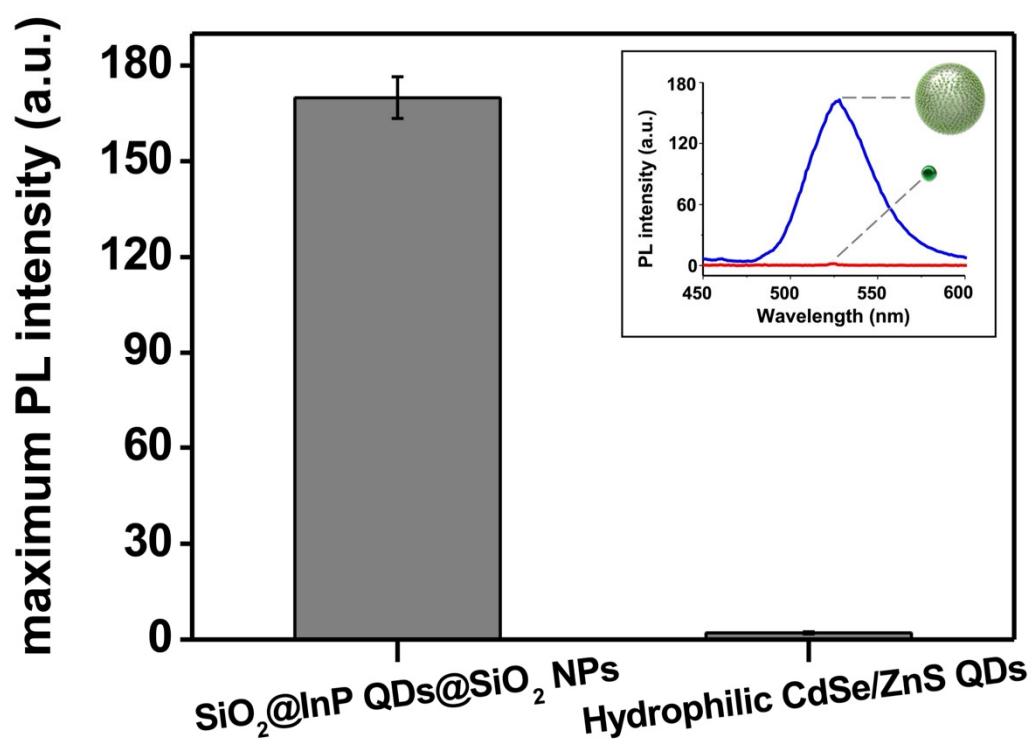


Figure S3. Comparison of PL intensity between SiO₂@InP QDs@SiO₂ NPs and hydrophilic CdSe/ZnS QDs. The maximum PL intensity of each particle at 527 nm emission wavelength was measured at the same concentration (2.66×10^{12} particles/mL). (**Inset:** PL intensity spectra of SiO₂@InP QDs@SiO₂ NPs and hydrophilic CdSe/ZnS QDs).

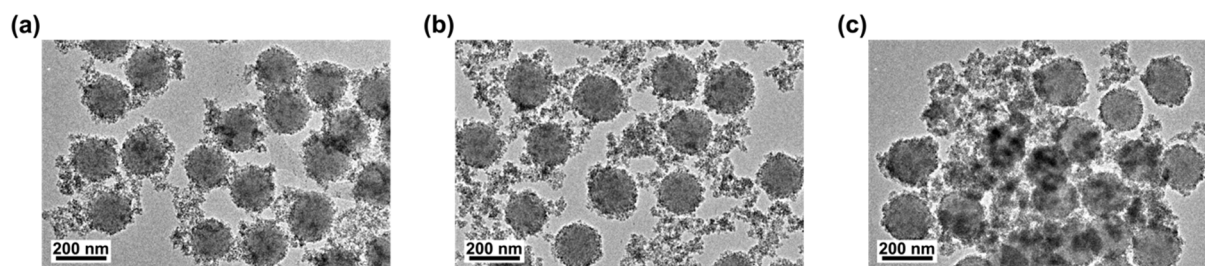


Figure S4. TEM images of SiO₂@InP QDs@SiO₂ NPs by amount of added QDs. The amount of added QDs were (a) 1.4 mg, (b) 2.8 mg and (c) 5.6 mg per 1mg of SiO₂ NPs.

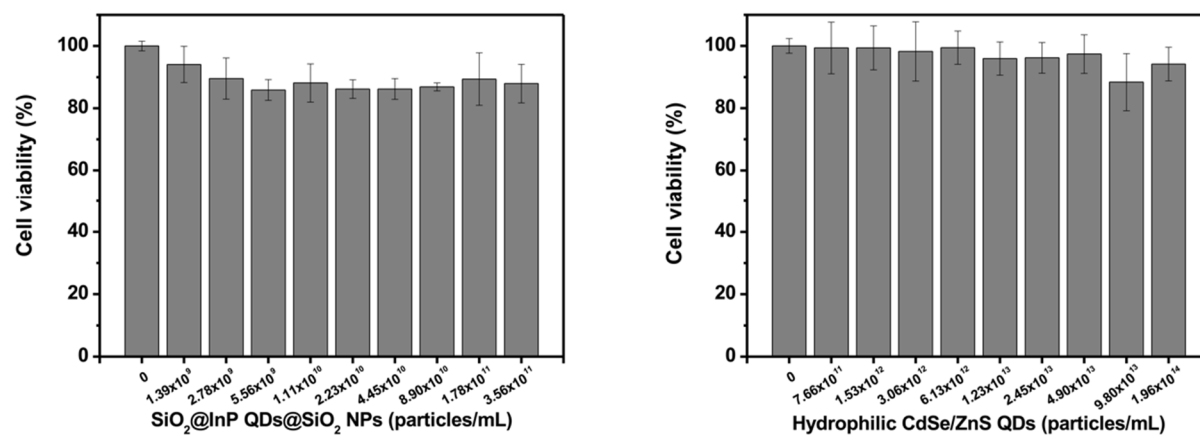


Figure S5. Cytotoxicity investigation of $\text{SiO}_2@\text{InP QDs}@\text{SiO}_2$ NPs and hydrophilic CdSe/ZnS QDs. Cell viability of A549 cells in DMEM after 24 hours incubation with $\text{SiO}_2@\text{InP QDs}@\text{SiO}_2$ NPs and hydrophilic CdSe/ZnS QDs.