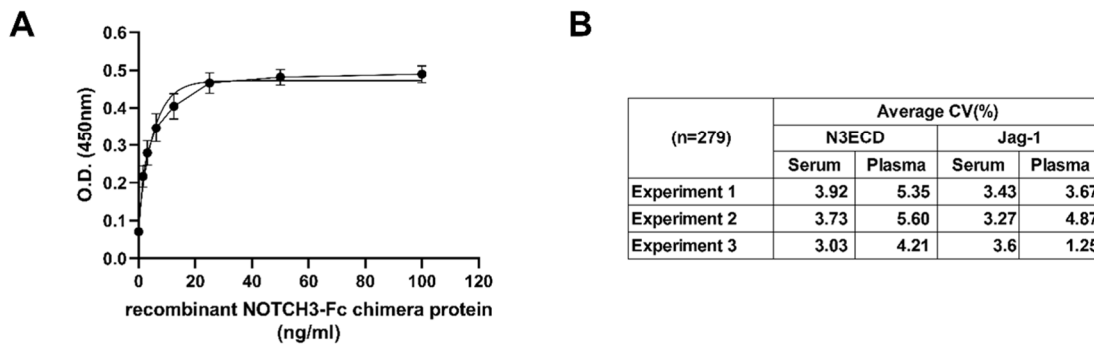


**Supplemental Table S1 . Blood N3ECD and Jag-1 levels of 279 healthy subjects**

	N3ECD (ng/ml)		Jag-1 (ng/ml)	
	Serum	Plasma	Serum	Plasma
<b>Number of subjects (n)</b>	279	279	279	279
<b>25% Percentile</b>	38.78	4.166	7.419	7.074
<b>Median</b>	48.74	5.731	9.745	9.397
<b>75% Percentile</b>	71.42	7.435	12.27	12.69
<b>Mean</b>	57.61	8.08	10.62	10.62
<b>Std. Deviation</b>	27.51	18	5.312	6.193

Abbreviations: Std = standard

**Supplemental Figure S1**



**Supplemental FigureS1.**A. limit of N3ECD protein detection in ELISA method 4-PL of the N3ECD ELISA was found to range up to ~100ng/ml. B. Coefficient variation values of three independent ELISA experiments for N3ECD and Jag1 protein level in serum and Jag1. Four parameter logistic (4PL) curve is a regression model used to analyze ELISA.