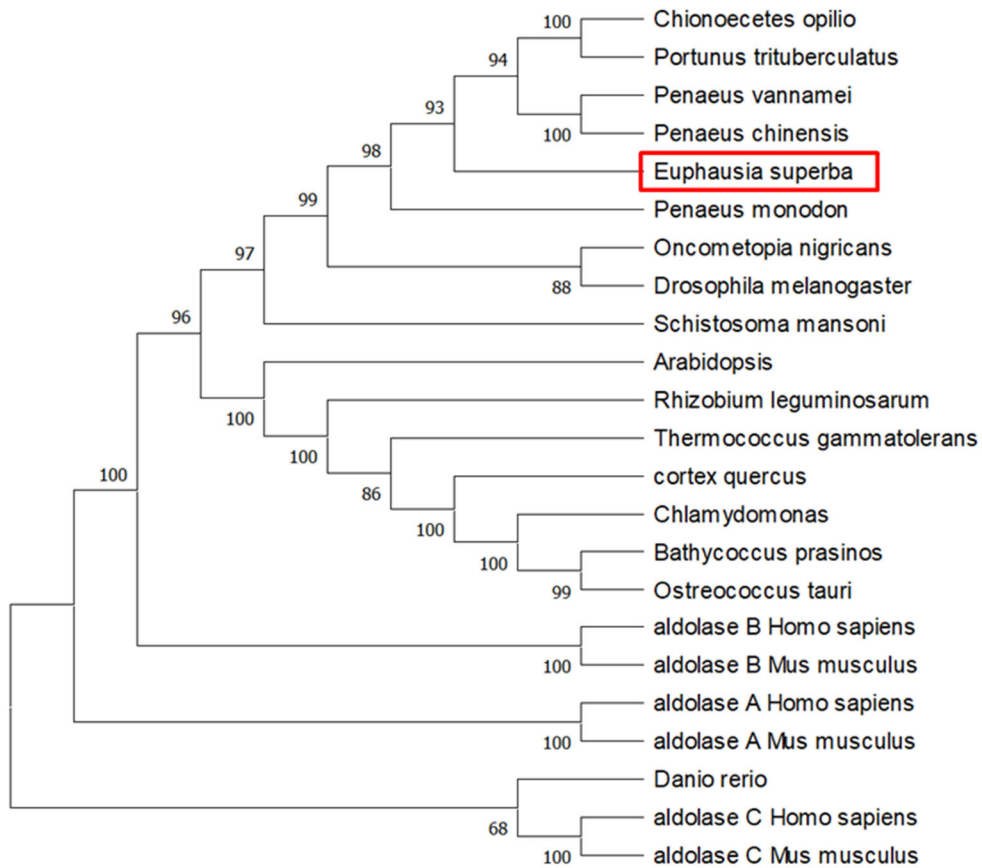
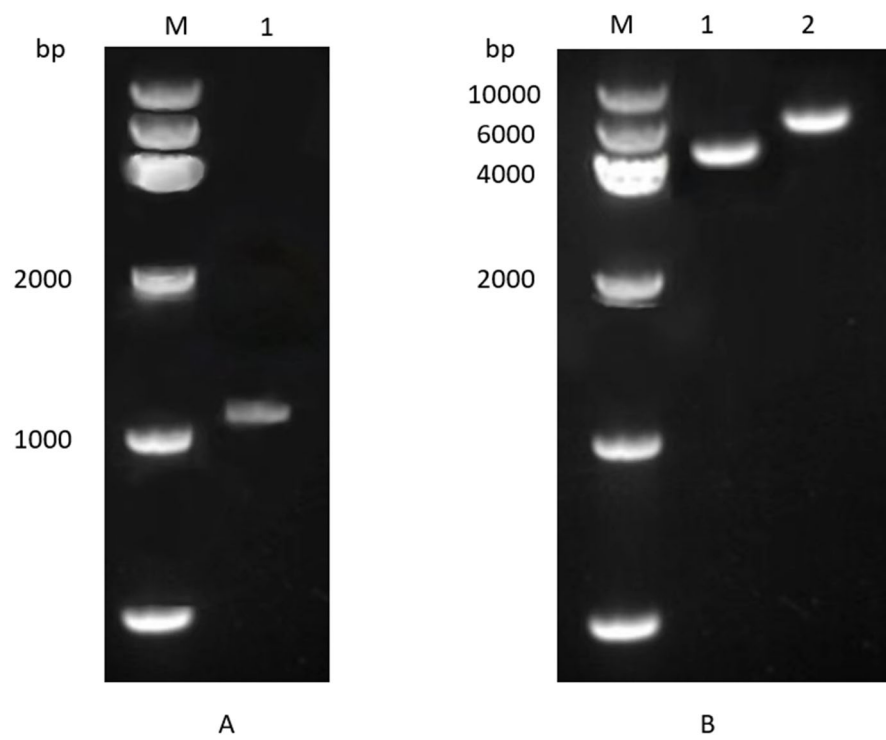


**Table S1.** Primer sequences

Primer	Sequence(5'-3')
3C-EsFBA-F	atggatgaactgtataaattggaggtttgtccagggtc
EsFBA-R	gtggtggtggtgctcgagtgcgtagtctggcacgtcgt
sfGFP-F	aaggagatataccatggtgagcaagggcgagga
SfGFP-3C-R	ctggaacaaaacctccaattatacagttcatccatgccca

**Figure S1.** The phylogenetic tree constructed according to the sequences of EsFBA and other FBA.

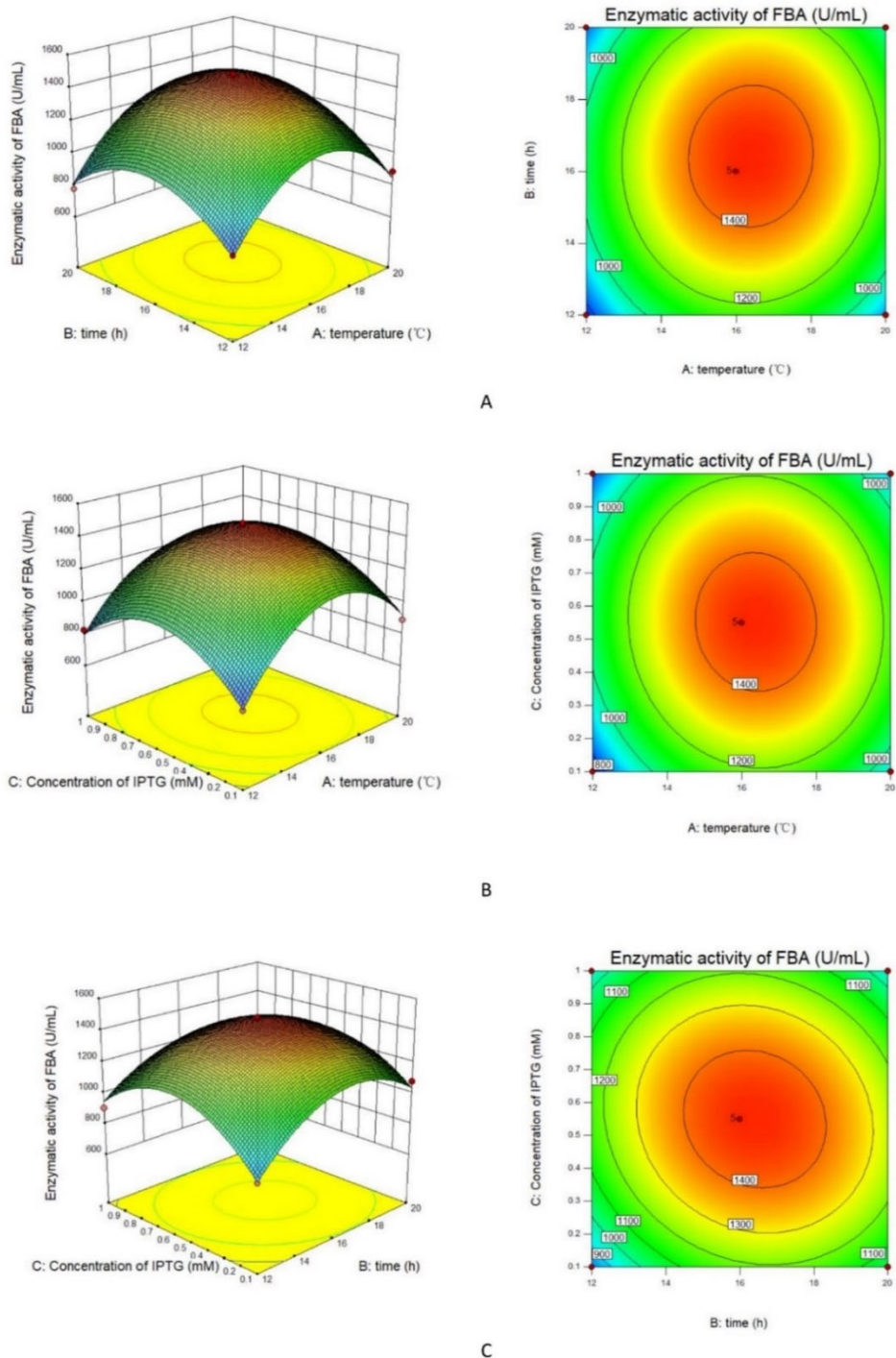
EsFBA researched in this study is in red box.



**Figure S2.** Agarose gels for testing recombinant expression vector constructs

A: M: marker; 1: PCR amplification product

B: M: marker; 1: Plasmid pET-28a; 2: Positive clone of pET-28a and target fragment.



**Figure S3.** Response surface diagram and contour surface diagram of the interaction between factors on EsFBA enzyme activity.

A: Response surface relationship between temperature and time; B: Response surface relationship between temperature and IPTG concentration; C: Response surface relationship between time and IPTG concentration.