

Supplementary file

Isoquinoline alkaloids from *Coptis chinensis* Franch: focus on coptisine as a potential therapeutic candidate against gastric cancer cells

Sylvia Nakonieczna ^{1A}, Aneta Grabarska ^{2A*}, Kinga Gawel ³, Paula Wróblewska – Łuczka ⁴,
Arkadiusz Czerwonka ², Andrzej Stepulak ² and Wirginia Kukula-Koch ^{1,*}

Figure S1. The UV (at 290 nm) chromatogram of the methanolic extract from the rhizomes of *Coptischinensis*

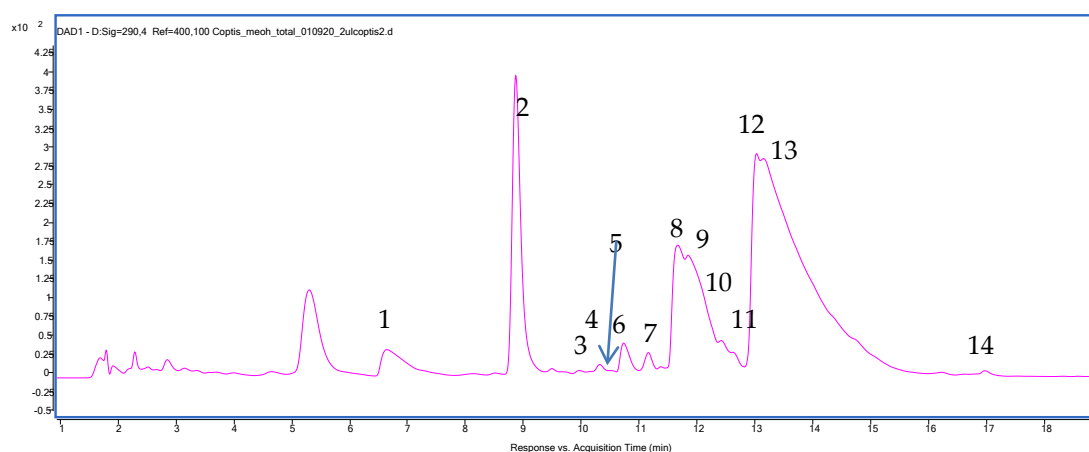
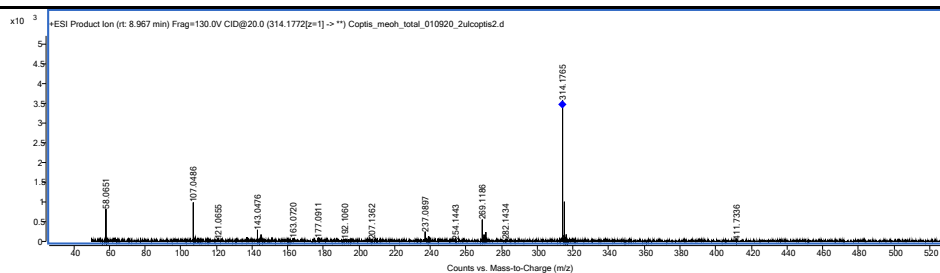


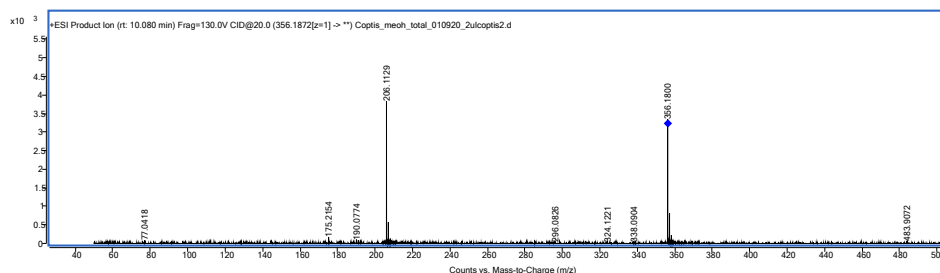
Table S1. The list of MS/MS spectra of the tentatively identified compounds

Name of the compound	MS/MS spectrum
Magnoflorine	

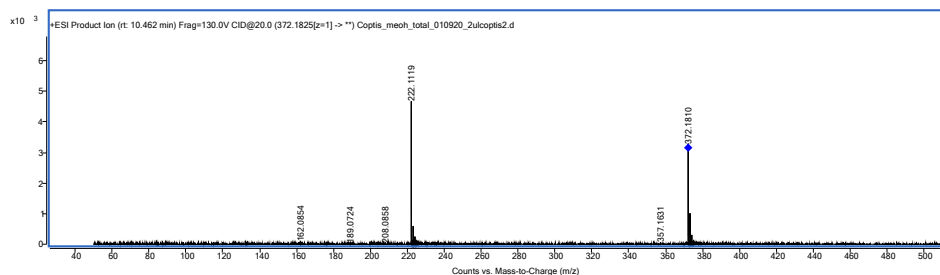
4'-O-Methyl-N-methylcoclaurine



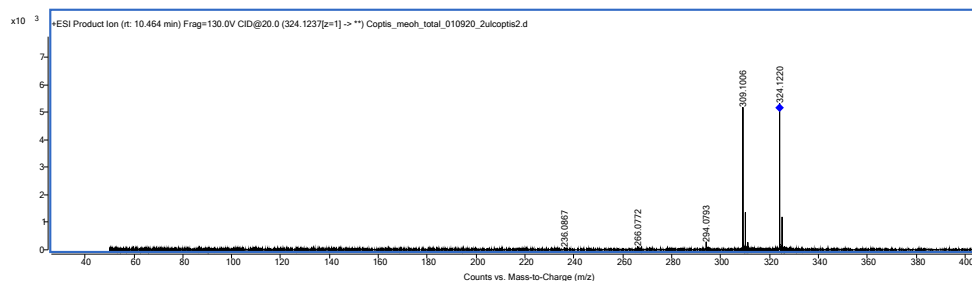
Menisperine



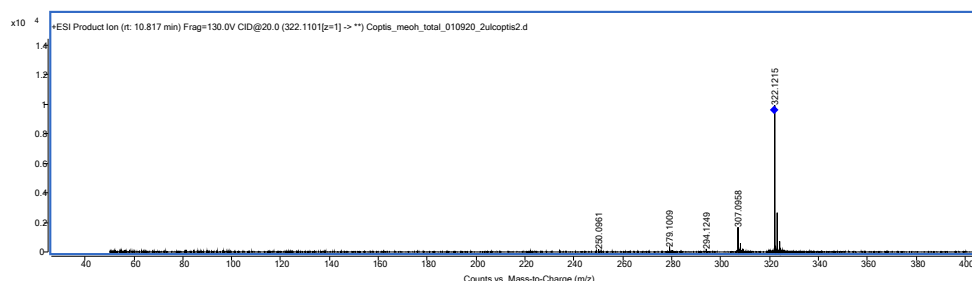
Stecepharine



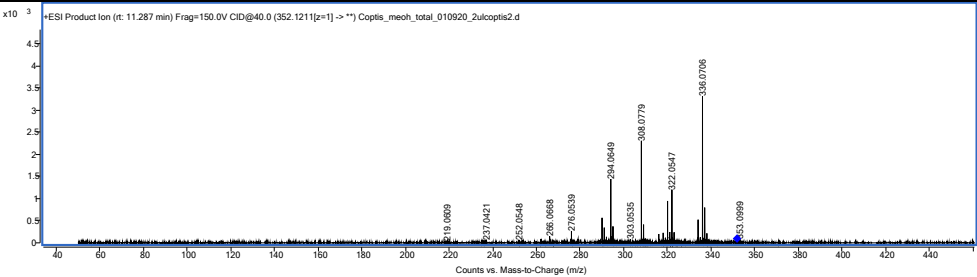
Demethyleneberberine/iso



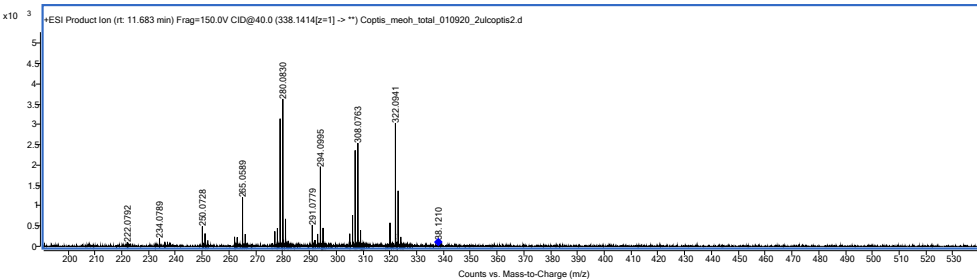
Berberrubine/Thalifendine



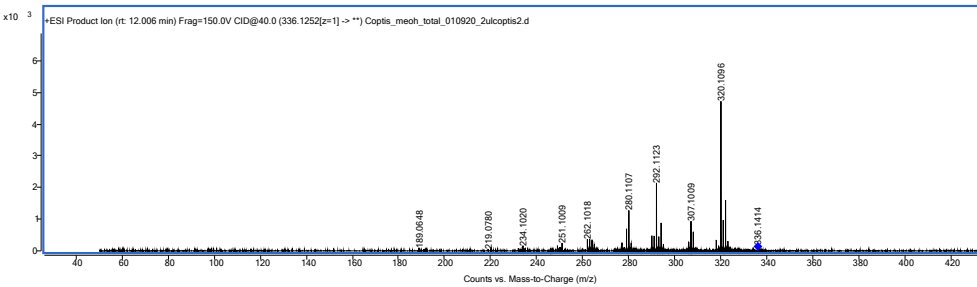
13-
methyljatrorrhizine/13-methylcolumbamine



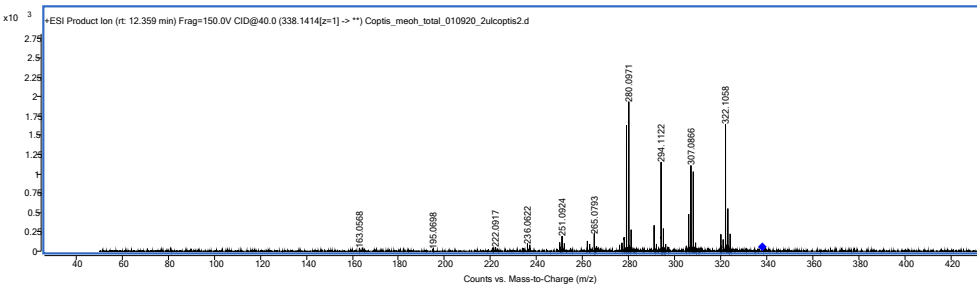
Columbamine



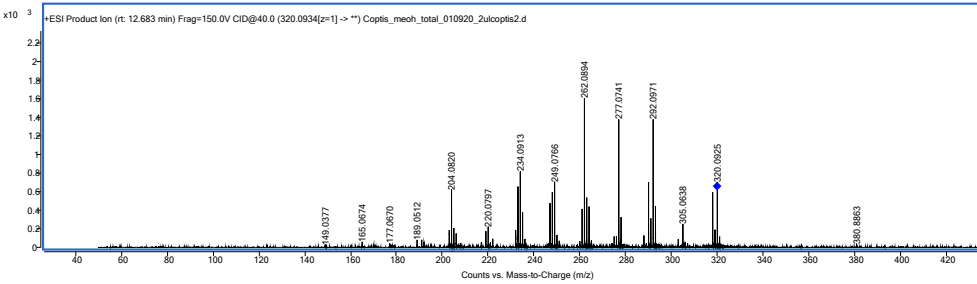
Epiberberine



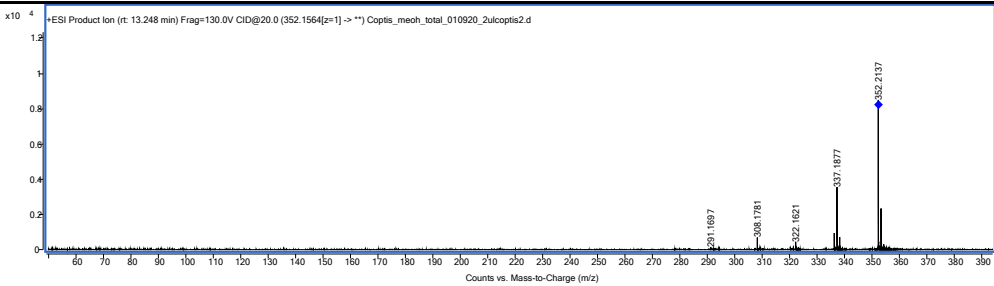
Jatrorrhizine



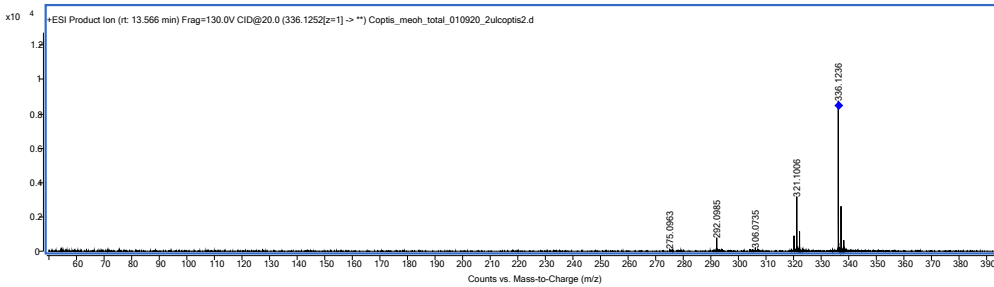
Coptisine



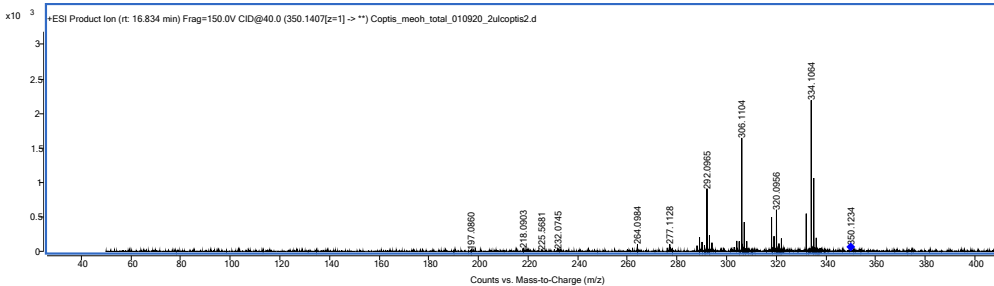
Palmatine



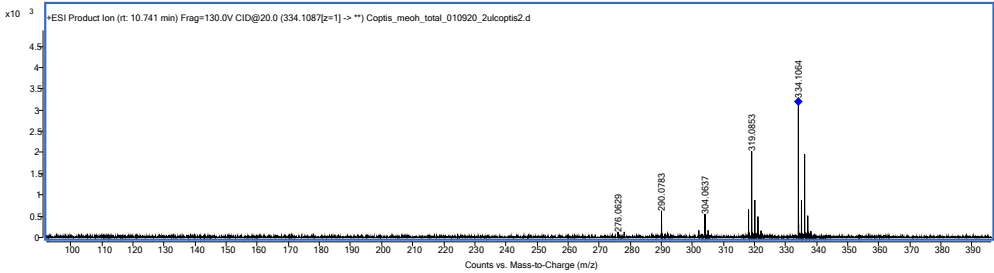
Berberine



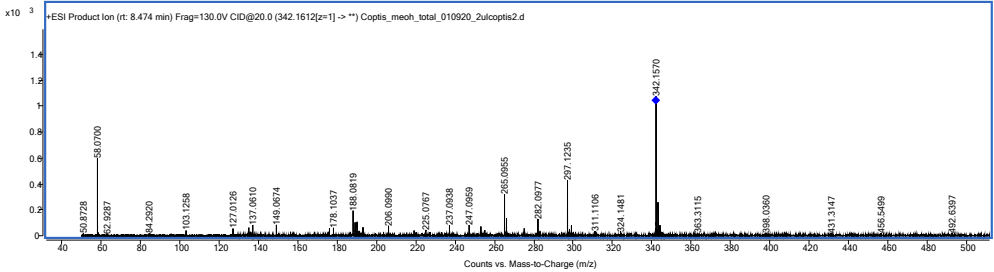
13-Methylberberine



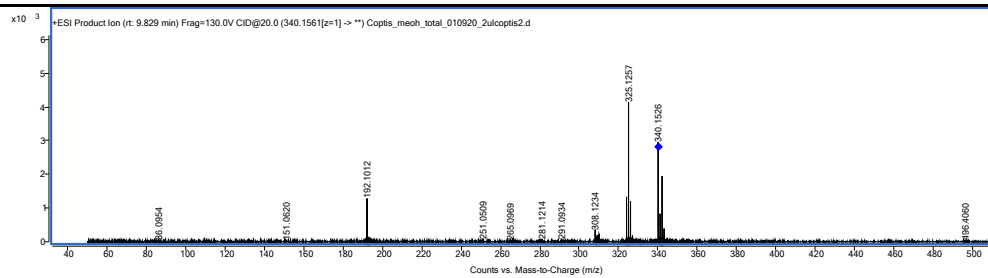
Dihydrosanguinarine



Phellodendrin



Tetrahydroberberine



Worenine

