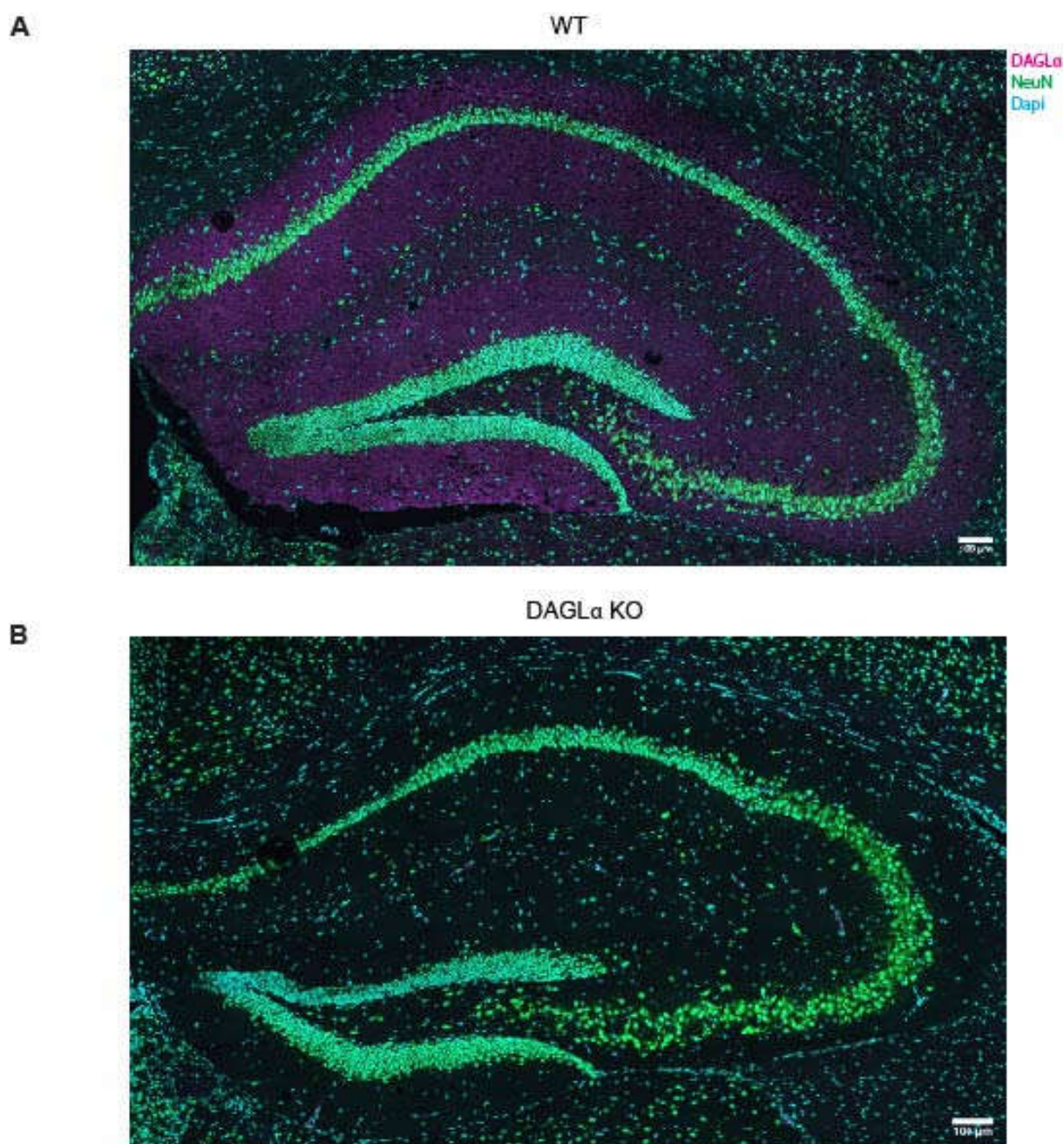


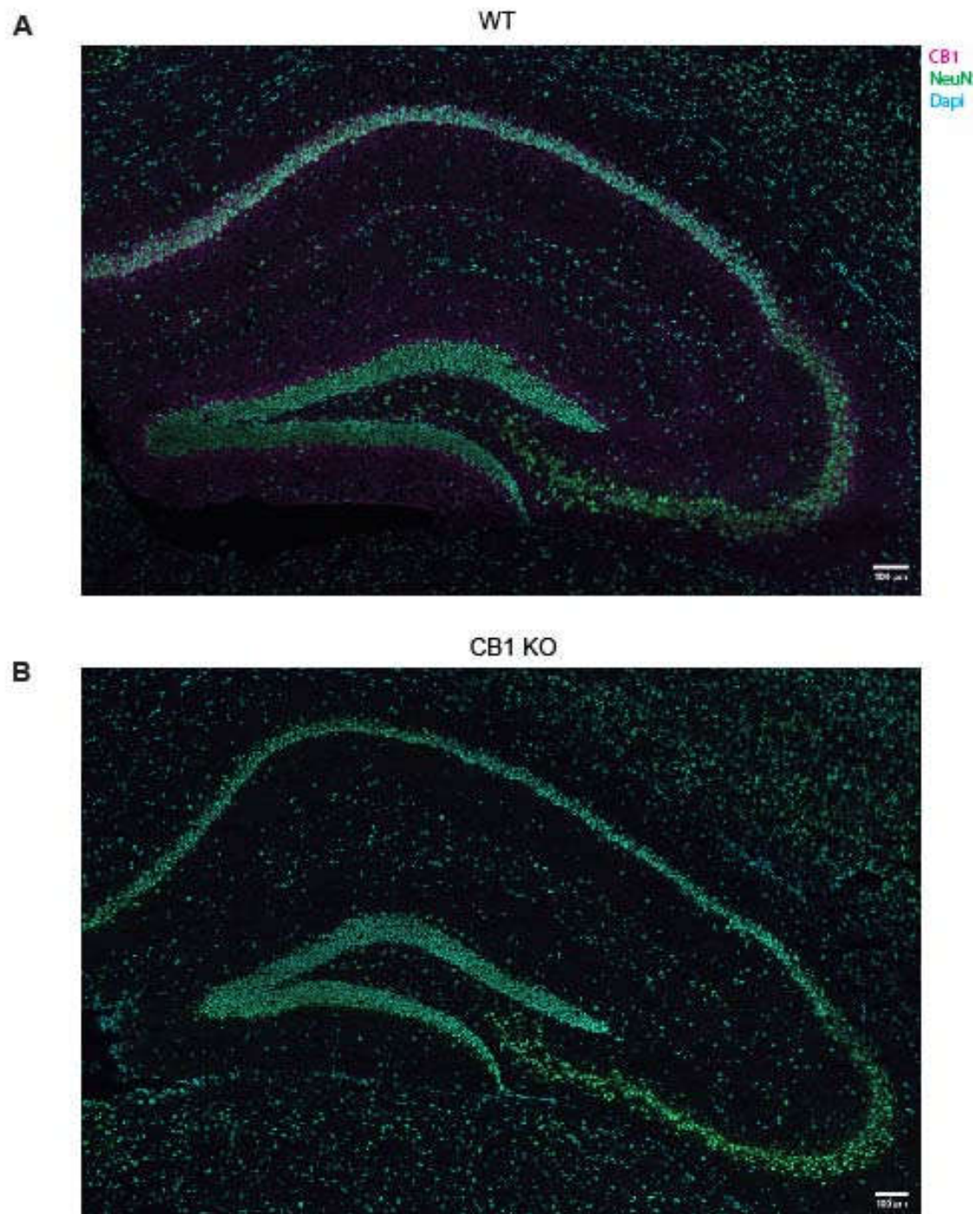
## Supplementary Material

### Supplementary Figure 1



**Supplementary Figure S1:** Antibody control for DAGL $\alpha$ . Coronal brain sections from WT and DAGL $\alpha$  KO mice immunostained for DAGL $\alpha$ . Representative images depicting DAGL $\alpha$  specific immunoreactivity in the whole hippocampus (scale bar=100  $\mu$ m) of the WT (**A**) and absence of DAGL $\alpha$  immunoreactivity in the KO mouse sections (**B**).

## Supplementary Figure 2



**Supplementary Figure S2:** Antibody control for CB1 receptor. Coronal brain sections from WT and CB1 KO mice immunostained for CB1 protein. Representative images depicting CB1 specific immunoreactivity in the whole hippocampus (scale bar=100  $\mu$ m) of the WT (**A**) and absence of CB1 immunoreactivity in the KO mouse sections (**B**).