

Figure S1. Protein expression levels of ADAR1 and METTL3 in breast cancer cells transfected with or without siRNAs and plasmids described in Figure 3.

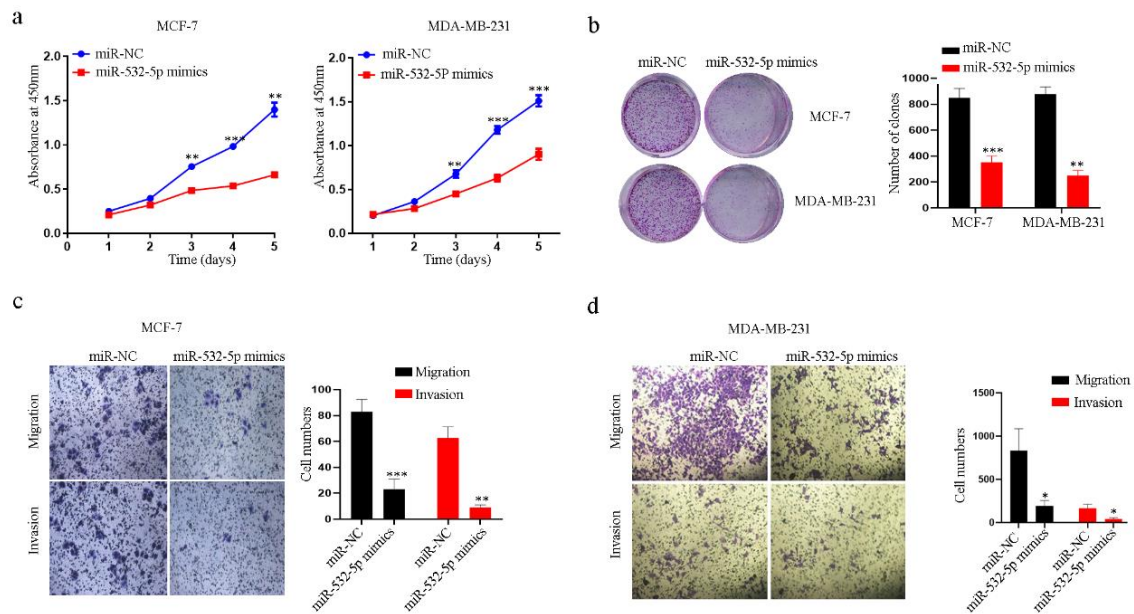


Figure S2. miR-532-5p inhibits cell proliferation, colony formation, cell migration and invasion of breast cancer cell lines.

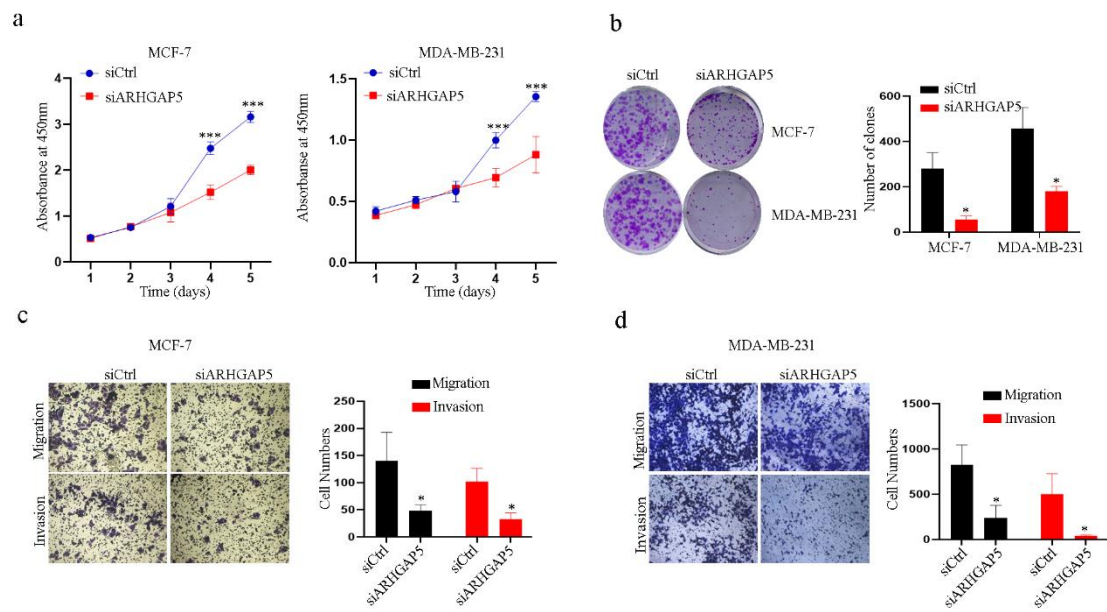


Figure S3. Knockdown of ARHGAP5 inhibits cell proliferation, colony formation, cell migration and invasion of breast cancer cell lines.

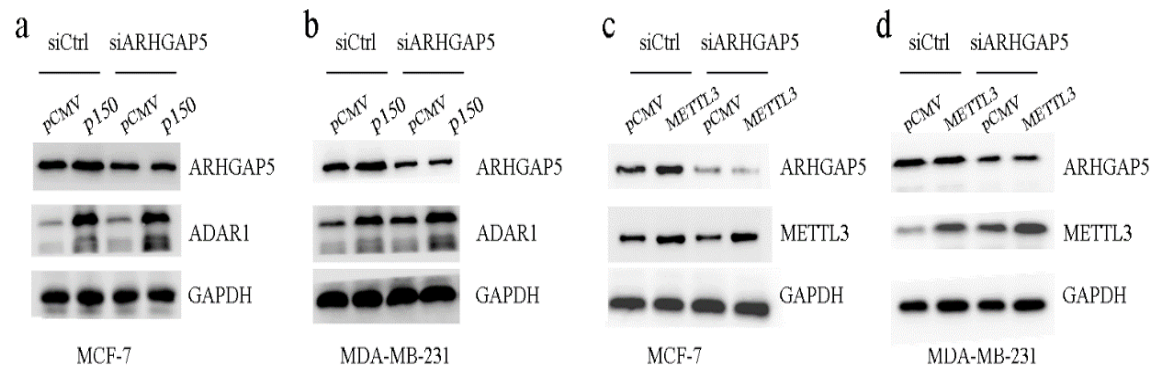


Figure S4. Protein expression levels of ARHGAP5, ADAR1 and METTL3 in breast cancer cells transfected with or without siRNAs and plasmids described in Figure 6.

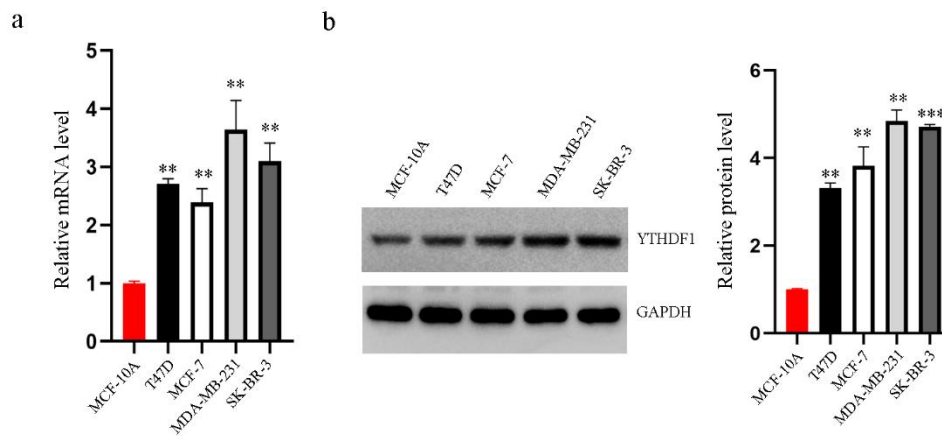


Figure S5. YTHDF1 is highly expressed in breast cancer cell lines.

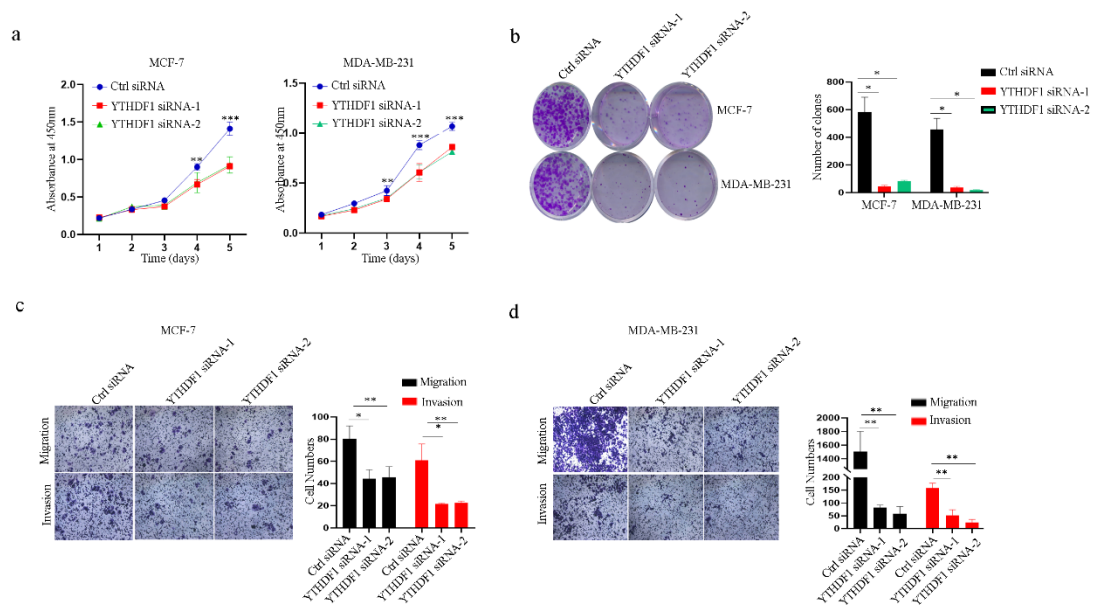


Figure S6. Knockdown of YTHDF1 inhibits cell proliferation, colony formation, cell migration and invasion of breast cancer cell lines.

Table S1 Oligo sequence used in the experiments

Oligo name	Oligo sequence (5'→3')
siRNA target oligo	
siYTHDF1-1	GATACAGTTCATGACAATGA
siYTHDF1-2	GAAACGTCCAGCCTAATTCT
siYTHDF2	GAACGTCAAGGTCGTGGGAAA
siYTHDF3	TACGGCATATTCGCTTAGAAA
siARHGAP5	AGAUCAUAAUAUCAUUCUATT
siMETTL3	CUGCACUUCAGACGAAUUATT
PCR primers	
YTHDF1-F	ATGTCGGCCACCAGCGTGGACA
YTHDF1-R	TCATTGTTTGTTTCGACTCTGC
GAPDH-F	TCTTAAGAAGACGACGGCTTCAG
GAPDH-R	TTGCTCTCTCACTTGTCTCGAT
ARHGAP5-F	AGGGAAGCTCAACGTAGATGG
ARHGAP5-R	ATGATCCACGCATTCATCACAT
ADAR1-F	CATCAGCGGGCTGTTAGAAT
ADAR1-R	CTTGGCCACTTTCTTGCTTC
METTL3-F	AGCCTTCTGAACCAACAGTCC
METTL3-R	CCGACCTCGAGAGCGAAAT